

Converting Colors

Hex(E59BB1)

Have a look what the booklet for
Hex(E59BB1) contains.

Hex(E59BB1)	3
<i>Conversions</i>	4
<i>Details</i>	6
<i>Harmonies</i>	11
<i>Previews</i>	23
<i>Color Blindness Simulation</i>	26
<i>CSS Examples</i>	29

Color

Hex(E59BB1)

Conversions

Conversions Part 1

Format	Color
Hex	E59BB1
RGB	229, 155, 177
RGB Percent	90%, 61%, 69%
CMY	0.1020, 0.3922, 0.3059
CMYK	0.00, 0.32, 0.23, 0.10
HSL	342°, 59%, 75%
HSV	342°, 32%, 90%
XYZ	51.9703, 43.2750, 47.2088
YIQ	179.6340, 37.0420, 22.5300

Conversions

Conversions Part 2

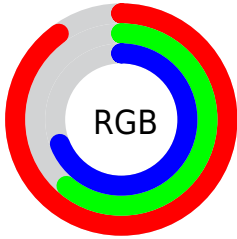
Format	Color
R_{YB}	229, 155, 177
Decimal	15047601
CIE _{Lab}	71.74, 30.67, -0.10
CIE _{LCh}	72, 30.666, 359.821
Yxy	43.2750, 0.3648, 0.3038
Android (android.graphics.Color)	4293237681 (0xFFE59BB1)
YUV	179.6340, -1.2986, 43.2940
Hunter-Lab	65.7838, 25.8964, 3.5000

Details

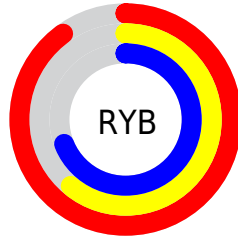
The Hex color **E59BB1** is a light color, and the websafe version is hex **CC9999**. A complement of this color would be **9BE5CF**, and the grayscale version is **B4B4B4**.

A 20% lighter version of the original color is **FFD2E9**, and **AC677D** is the 20% darker color. If you saturate the color by 10%, you get **E584A1**, and if you desaturate by 10%, it is **E5B2C1**.

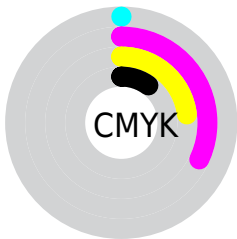
Distribution



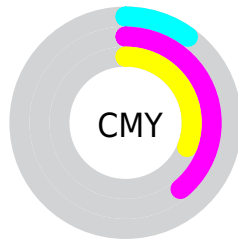
- Red (90%)
- Green (61%)
- Blue (69%)



- Red (90%)
- Yellow (61%)
- Blue (69%)



- Cyan (0%)
- Magenta (32%)
- Yellow (23%)
- Black (10%)



- Cyan (10%)
- Magenta (39%)
- Yellow (31%)

Brightness & Saturation Gradients

These gradients show how the Hex color E59BB1 changes by changing the brightness by 10 percent. The first figure shows a shift by +10% for each color and the second figure -10%.

Similar to the brightness gradients but the following saturation gradients show a change of the Hex color E59BB1 by changing the saturation by 10% instead.

 E59BB1

 E59BB1

FFFFFF

 C88196

 FFD2E9

 AC677D

 FFEFFF

 914E64

 76364C

 5C1E35

 420420

 2D0008

 000000

 E59BB1

 E59BB1

 E584A1

 E5B2C1

 E56D91

 E5C9D1

 E55681

 E5E0E1

 E53F71

 E5F7F1

 E52861

 E5FFFF

 E51250

 E50044

Harmonies

Analogous

The Analogous color harmony consists of three colors that are next to each other on the color wheel.



D3A0CC



E59BB1



E79D95

Triad

The Triadic color harmony groups three colors that are evenly spaced from another and form a triangle on the color wheel.



E59BB1



A6B67F



65BADF

Complementary

The Complementary color scheme is a pair of colors which are on the opposite of each other on the color wheel.



E59BB1



9BE5CF

Split Complementary

Split-complementary colors differ from the complementary color scheme. The scheme consists of three colors, the original color and two neighbors of the complement color.



56BECB



E59BB1



85BC93

Square

The Square scheme is like the rectangle color scheme, but the four colors are evenly spaced on the color wheel.



E59BB1



C4AE78



67BFAF



8BB2E7

Rectangle

The Rectangle color scheme consists of four colors that form a rectangle on the color wheel.



E59BB1



E0A286



67BFAF



5CBCDA

Sweetspot

The Sweet Spot groups the original color and five complimentary colors.



E59BB1



FFE6ED



CF9BE5



807075



000000



808080

Same Dimension

The Same Dimension uses a secret algorithm to generate beautiful new colors.



E59BB1



FF9CB9



E5AA9B



73676B



B30035



33000F

Inverse Universe

The Inverse Universe completely reimagines the original color for something new.



E59BB1



FF9CB9



9BD6E5



73676B



B30035



33000F

Previews

White Background



This preview shows how the Hex color E59BB1 looks on a white background.

Color Contrast Check

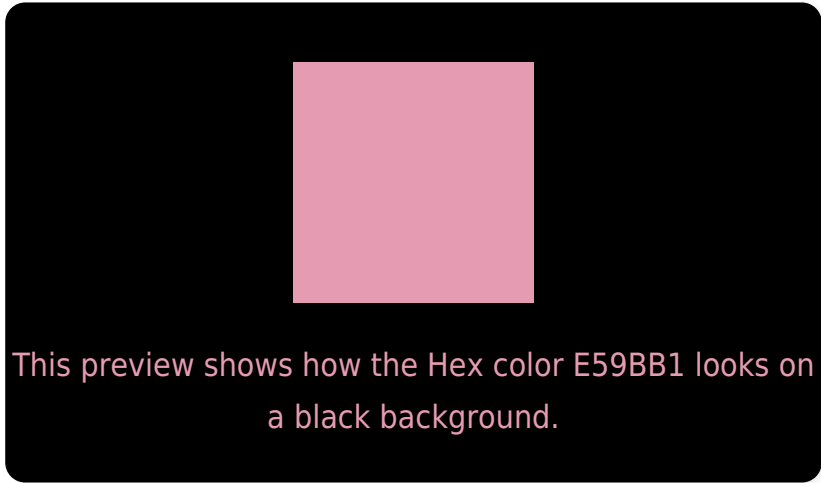
Large Text (above 18pt) WCAG AA × Fail

Any Text WCAG AA × Fail

Large Text (above 18pt) WCAG AAA × Fail

Any Text WCAG AAA × Fail

Black Background



Color Contrast Check

Large Text (above 18pt) WCAG AA ✓ Pass

Any Text WCAG AA ✓ Pass

Large Text (above 18pt) WCAG AAA ✓ Pass

Any Text WCAG AAA ✓ Pass

If you want to check with other color combinations, try the [Color Contrast Checker](#).

Hex E59BB1 Background



This preview shows how black text looks on a background with the Hex color E59BB1.

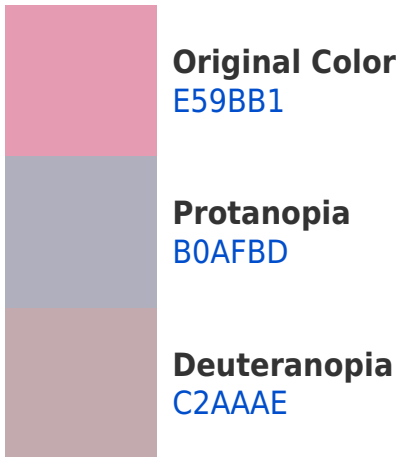


This preview shows how white text looks on a background with the Hex color E59BB1.

Color Blindness Simulation

Color vision deficiency is a very complex topic, and I could not describe the different causes any better than Wikipedia does, so if you want to learn more, you should check out their [article about color blindness](#).

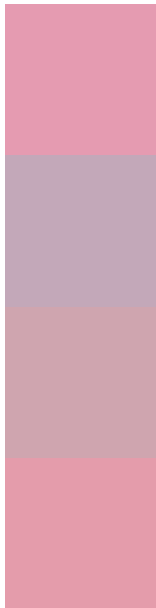
Dichromacy





Tritanopia
E49CA8

Trichromacy



Original Color
E59BB1

Protanomaly
C3A8B9

Deuteranomaly
CFA5AF

Tritanomaly
E49CAB

Monochromacy



Original Color
E59BB1

Achromatopsia
B4B4B4

Achromatomaly
C6ABB3

CSS Examples

Text

The CSS property to change the color of the text to Hex E59BB1 is called "color". The color property can be set on classes, ids or directly on the HTML element.

This example shows how text in the color #E59BB1 looks like.

```
.text, #text, p{  
    color:#E59BB1  
}
```

If you want to add a text shadow in that color use the text-shadow property, you can generate a text shadow directly with our [CSS Text Shadow Generator](#).

Here you see how black text with a 4 pixel #E59BB1 colored shadow looks like.

```
.shadow{ text-shadow: 4px 4px 2px #E59BB1
}
```

Border

The CSS property to change the border of an element to Hex E59BB1 is called "border". The border property can be set on classes, ids or directly on the HTML element.

This example shows the color as border, it can be applied via the CSS property "border" or "border-color".

```
.border, #border, table{ border:4px solid
#E59BB1 }
```

If only the border color should be changed use the property `border-color`.

```
.border{ border-color:#E59BB1 }
```

If you want to add a box shadow in that color use:

Here you see how a box with a 4 pixel #E59BB1 colored shadow looks like.

```
.boxshadow{ -moz-box-shadow:4px 4px 4px  
4px #E59BB1; -webkit-box-shadow:4px 4px  
4px 4px #E59BB1; box-shadow:4px 4px 4px  
4px #E59BB1 }
```

Background

The CSS property to change the background color of an element to Hex E59BB1 is called "background". The background property can be set on classes, ids or directly on the HTML element.

```
.background, #background, body{  
background:#E59BB1 }
```

If only the background color should be changed can be used:

```
.background{ background-color:#E59BB1 }
```

This example shows the color as background, it is applied via the CSS property "background".

To optimize and compress your CSS code, you can use our [online CSS compressor and optimizer](#) based on csstidy. If you want to create a linear or radial gradient as background or border, check our [CSS Gradient Generator](#).

Hey! You found this booklet interesting? Support Converting Colors with the new Membership Option!

The pro membership hides all ads, plus gives you double the colors in the color bucket, and more awesome pro features!

[Learn more, Memberships starting at \\$2.50/m!](#)

**Follow me
on Twitter!**

@ConvertingColor