

Converting Colors

Hex(E5A7B5)

Have a look what the booklet for
Hex(E5A7B5) contains.

Hex(E5A7B5)	3
<i>Conversions</i>	4
<i>Details</i>	6
<i>Harmonies</i>	11
<i>Previews</i>	23
<i>Color Blindness Simulation</i>	26
<i>CSS Examples</i>	29

Color

Hex(E5A7B5)

Conversions

Conversions Part 1

Format	Color
Hex	E5A7B5
RGB	229, 167, 181
RGB Percent	90%, 65%, 71%
CMY	0.1020, 0.3451, 0.2902
CMYK	0.00, 0.27, 0.21, 0.10
HSL	346°, 54%, 78%
HSV	346°, 27%, 90%
XYZ	54.4723, 47.6316, 50.0389
YIQ	187.1340, 32.4580, 17.4980

Conversions

Conversions Part 2

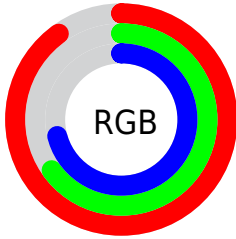
Format	Color
RYB	229, 167, 181
Decimal	15050677
CIELab	74.59, 24.84, 1.85
CIElCh	75, 24.906, 4.266
Yxy	47.6316, 0.3580, 0.3131
Android (android.graphics.Color)	4293240757 (0xFFE5A7B5)
YUV	187.1340, -3.0241, 36.7165
Hunter-Lab	69.0157, 20.1080, 5.3236

Details

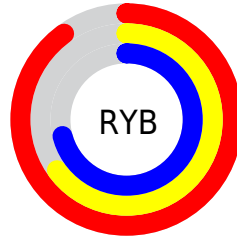
The Hex color **E5A7B5** is a light color, and the websafe version is hex **CC9999**. A complement of this color would be **A7E5D7**, and the grayscale version is **BBBBBB**.

A 20% lighter version of the original color is **FFDEED**, and **AC7280** is the 20% darker color. If you saturate the color by 10%, you get **E590A3**, and if you desaturate by 10%, it is **E5BEC7**.

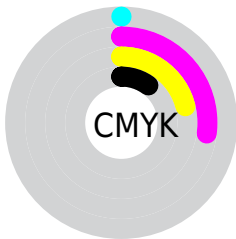
Distribution



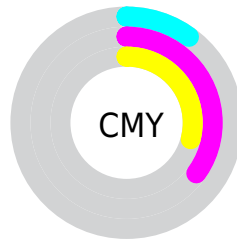
- Red (90%)
- Green (65%)
- Blue (71%)



- Red (90%)
- Yellow (65%)
- Blue (71%)



- Cyan (0%)
- Magenta (27%)
- Yellow (21%)
- Black (10%)



- Cyan (10%)
- Magenta (35%)
- Yellow (29%)

Brightness & Saturation Gradients

These gradients show how the Hex color E5A7B5 changes by changing the brightness by 10 percent. The first figure shows a shift by +10% for each color and the second figure -10%.

Similar to the brightness gradients but the following saturation gradients show a change of the Hex color E5A7B5 by changing the saturation by 10% instead.

 E5A7B5

 E5A7B5


FFFFFF

 C88C9A

 FFDEED

 AC7280

 FFFBFF

 915A67

 77414F

 5D2A38

 441423

 2D000D

 040000

 000000

 E5A7B5

 E5A7B5

 E590A3

 E5BEC7

 E57992

 E5D5D8

 E56280

 E5ECEA

 E54B6E

 E5FFFC

 E5355C

 E5FFFF

 E51E4B

 E50739

 E50034

Harmonies

Analogous

The Analogous color harmony consists of three colors that are next to each other on the color wheel.



D8AACC



E5A7B5



E5A99F

Triad

The Triadic color harmony groups three colors that are evenly spaced from another and form a triangle on the color wheel.



E5A7B5



ACBE91



84BFE0

Complementary

The Complementary color scheme is a pair of colors which are on the opposite of each other on the color wheel.



E5A7B5



A7E5D7

Split Complementary

Split-complementary colors differ from the complementary color scheme. The scheme consists of three colors, the original color and two neighbors of the complement color.



76C3D0



E5A7B5



92C3A3

Square

The Square scheme is like the rectangle color scheme, but the four colors are evenly spaced on the color wheel.



E5A7B5



C5B78A



7DC5BA



A0B8E5

Rectangle

The Rectangle color scheme consists of four colors that form a rectangle on the color wheel.



E5A7B5



DFAD93



7DC5BA



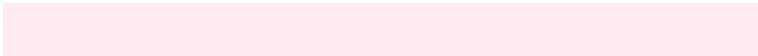
7DC1DC

Sweetspot

The Sweet Spot groups the original color and five complimentary colors.



E5A7B5



FFEBEF



D7A7E5



807376



000000



808080

Same Dimension

The Same Dimension uses a secret algorithm to generate beautiful new colors.



E5A7B5



FFADC0



E5B8A7



73676A



B30028



33000C

Inverse Universe

The Inverse Universe completely reimagines the original color for something new.



E5A7B5



FFADC0



A7D4E5



73676A



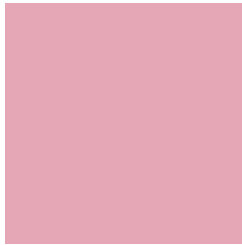
B30028



33000C

Previews

White Background



This preview shows how the Hex color E5A7B5 looks on a white background.

Color Contrast Check

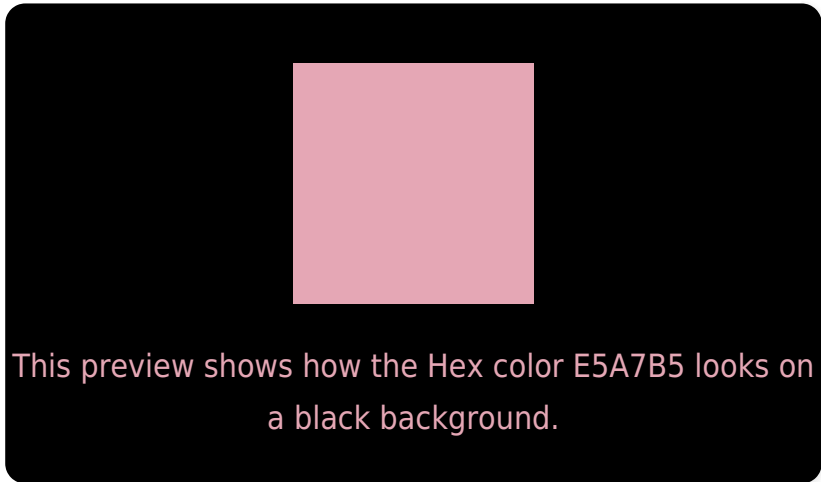
Large Text (above 18pt) WCAG AA × Fail

Any Text WCAG AA × Fail

Large Text (above 18pt) WCAG AAA × Fail

Any Text WCAG AAA × Fail

Black Background



Color Contrast Check

Large Text (above 18pt) WCAG AA ✓ Pass

Any Text WCAG AA ✓ Pass

Large Text (above 18pt) WCAG AAA ✓ Pass

Any Text WCAG AAA ✓ Pass

If you want to check with other color combinations, try the [Color Contrast Checker](#).

Hex E5A7B5 Background



This preview shows how black text looks on a background with the Hex color E5A7B5.



This preview shows how white text looks on a background with the Hex color E5A7B5.

Color Blindness Simulation

Color vision deficiency is a very complex topic, and I could not describe the different causes any better than Wikipedia does, so if you want to learn more, you should check out their [article about color blindness](#).

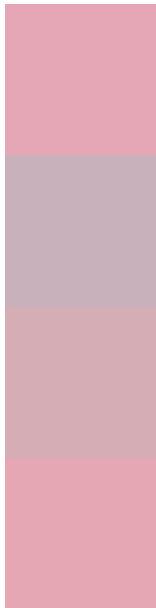
Dichromacy





Tritanopia
E5A7B4

Trichromacy



Original Color
E5A7B5

Protanomaly
C9B1BB

Deuteranomaly
D4AEB4

Tritanomaly
E5A7B4

Monochromacy



Original Color
E5A7B5

Achromatopsia
BBBBBB

Achromatomaly
CAB4B9

CSS Examples

Text

The CSS property to change the color of the text to Hex E5A7B5 is called "color". The color property can be set on classes, ids or directly on the HTML element.

This example shows how text in the color #E5A7B5 looks like.

```
.text, #text, p{  
    color:#E5A7B5  
}
```

If you want to add a text shadow in that color use the text-shadow property, you can generate a text shadow directly with our [CSS Text Shadow Generator](#).

Here you see how black text with a 4 pixel #E5A7B5 colored shadow looks like.

```
.shadow{ text-shadow: 4px 4px 2px #E5A7B5
}
```

Border

The CSS property to change the border of an element to Hex E5A7B5 is called "border". The border property can be set on classes, ids or directly on the HTML element.

This example shows the color as border, it can be applied via the CSS property "border" or "border-color".

```
.border, #border, table{ border:4px solid
#E5A7B5 }
```

If only the border color should be changed use the property `border-color`.

```
.border{ border-color:#E5A7B5 }
```

If you want to add a box shadow in that color use:

Here you see how a box with a 4 pixel #E5A7B5 colored shadow looks like.

```
.boxshadow{ -moz-box-shadow:4px 4px 4px  
4px #E5A7B5; -webkit-box-shadow:4px 4px  
4px 4px #E5A7B5; box-shadow:4px 4px 4px  
4px #E5A7B5 }
```

Background

The CSS property to change the background color of an element to Hex E5A7B5 is called "background". The background property can be set on classes, ids or directly on the HTML element.

```
.background, #background, body{  
background:#E5A7B5 }
```

If only the background color should be changed can be used:

```
.background{ background-color:#E5A7B5 }
```

This example shows the color as background, it is applied via the CSS property "background".

To optimize and compress your CSS code, you can use our [online CSS compressor and optimizer](#) based on csstidy. If you want to create a linear or radial gradient as background or border, check our [CSS Gradient Generator](#).

Hey! You found this booklet interesting? Support Converting Colors with the new Membership Option!

The pro membership hides all ads, plus gives you double the colors in the color bucket, and more awesome pro features!

[Learn more, Memberships starting at \\$2.50/m!](#)

**Follow me
on Twitter!**

@ConvertingColor