

Converting Colors

Hex(E5ACB9)

Have a look what the booklet for
Hex(E5ACB9) contains.

Hex(E5ACB9)	3
<i>Conversions</i>	4
<i>Details</i>	6
<i>Harmonies</i>	11
<i>Previews</i>	23
<i>Color Blindness Simulation</i>	26
<i>CSS Examples</i>	29

Color

Hex(E5ACB9)

Conversions

Conversions Part 1

Format	Color
Hex	E5ACB9
RGB	229, 172, 185
RGB Percent	90%, 67%, 73%
CMY	0.1020, 0.3255, 0.2745
CMYK	0.00, 0.25, 0.19, 0.10
HSL	346°, 52%, 79%
HSV	346°, 25%, 90%
XYZ	55.8226, 49.6658, 52.5432
YIQ	190.5250, 29.7990, 16.1270

Conversions

Conversions Part 2

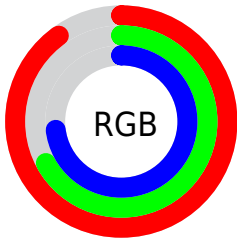
Format	Color
R _Y B	229, 172, 185
Decimal	15051961
CIE Lab	75.86, 22.76, 1.51
CIE LCh	76, 22.809, 3.802
Yxy	49.6658, 0.3532, 0.3143
Android (android.graphics.Color)	4293242041 (0xFFE5ACB9)
YUV	190.5250, -2.7238, 33.7426
Hunter-Lab	70.4740, 18.0607, 5.1270

Details

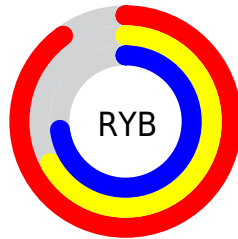
The Hex color **E5ACB9** is a light color, and the websafe version is hex **CC9999**. A complement of this color would be **ACE5D8**, and the grayscale version is **BFBFBF**.

A 20% lighter version of the original color is **FFE4F1**, and **AD7784** is the 20% darker color. If you saturate the color by 10%, you get **E595A7**, and if you desaturate by 10%, it is **E5C3CB**.

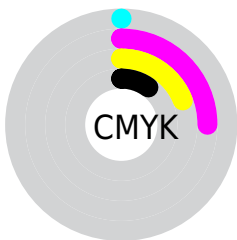
Distribution



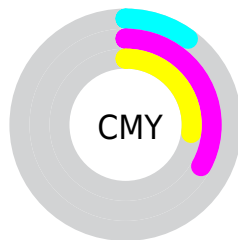
- Red (90%)
- Green (67%)
- Blue (73%)



- Red (90%)
- Yellow (67%)
- Blue (73%)



- Cyan (0%)
- Magenta (25%)
- Yellow (19%)
- Black (10%)



- Cyan (10%)
- Magenta (33%)
- Yellow (27%)

Brightness & Saturation Gradients

These gradients show how the Hex color E5ACB9 changes by changing the brightness by 10 percent. The first figure shows a shift by +10% for each color and the second figure -10%.

Similar to the brightness gradients but the following saturation gradients show a change of the Hex color E5ACB9 by changing the saturation by 10% instead.

 E5ACB9

FFFFFF

 FFE4F1

 E5ACB9

 C9919E

 AD7784

 915E6B

 774653

 5D2F3C

 451926

 2D0211

 0D0000

 000000

 E5ACB9

 E5ACB9

 E595A7

 E5C3CB

 E57E96

 E5DADC

 E56784

 E5F1EE

 E55072

 E5FFFF

 E53961

 E5234F

 E50C3D

 E50034

Harmonies

Analogous

The Analogous color harmony consists of three colors that are next to each other on the color wheel.



D9AFCE



E5ACB9



E5AEA5

Triad

The Triadic color harmony groups three colors that are evenly spaced from another and form a triangle on the color wheel.



E5ACB9



B1C198



8CC2E0

Complementary

The Complementary color scheme is a pair of colors which are on the opposite of each other on the color wheel.



E5ACB9



ACE5D8

Split Complementary

Split-complementary colors differ from the complementary color scheme. The scheme consists of three colors, the original color and two neighbors of the complement color.



80C6D2



E5ACB9



99C5A8

Square

The Square scheme is like the rectangle color scheme, but the four colors are evenly spaced on the color wheel.



E5ACB9



C8BA91



86C7BD



A6BCE5

Rectangle

The Rectangle color scheme consists of four colors that form a rectangle on the color wheel.



E5ACB9



E0B19A



86C7BD



87C4DC

Sweetspot

The Sweet Spot groups the original color and five complimentary colors.



E5ACB9



FFEDF1



D8ACE5



807578



000000



808080

Same Dimension

The Same Dimension uses a secret algorithm to generate beautiful new colors.



E5ACB9



FFB3C4



E5BBAC



73676A



B30029



33000C

Inverse Universe

The Inverse Universe completely reimagines the original color for something new.



E5ACB9



FFB3C4



ACD6E5



73676A



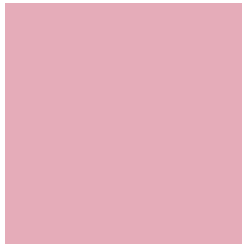
B30029



33000C

Previews

White Background



This preview shows how the Hex color E5ACB9 looks on a white background.

Color Contrast Check

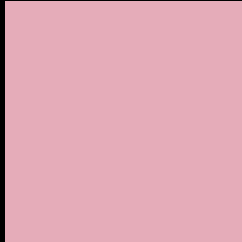
Large Text (above 18pt) WCAG AA × Fail

Any Text WCAG AA × Fail

Large Text (above 18pt) WCAG AAA × Fail

Any Text WCAG AAA × Fail

Black Background



This preview shows how the Hex color E5ACB9 looks on a black background.

Color Contrast Check

Large Text (above 18pt) WCAG AA ✓ Pass

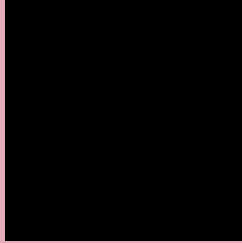
Any Text WCAG AA ✓ Pass

Large Text (above 18pt) WCAG AAA ✓ Pass

Any Text WCAG AAA ✓ Pass

If you want to check with other color combinations, try the [Color Contrast Checker](#).

Hex E5ACB9 Background



This preview shows how black text looks on a background with the Hex color E5ACB9.

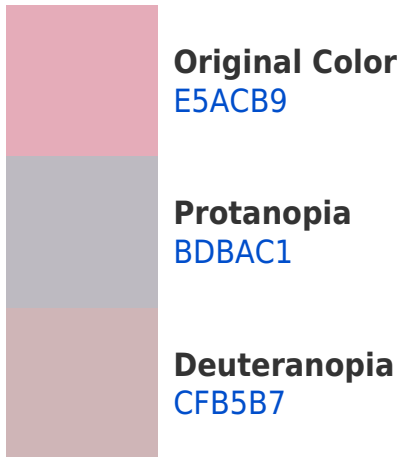


This preview shows how white text looks on a background with the Hex color E5ACB9.

Color Blindness Simulation

Color vision deficiency is a very complex topic, and I could not describe the different causes any better than Wikipedia does, so if you want to learn more, you should check out their [article about color blindness](#).

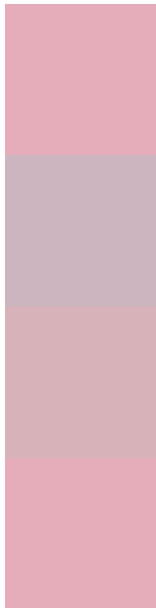
Dichromacy





Tritanopia
E5ACB9

Trichromacy



Original Color
E5ACB9

Protanomaly
CCB5BE

Deuteranomaly
D7B2B8

Tritanomaly
E5ACB9

Monochromacy



Original Color
E5ACB9

Achromatopsia
BFBFBF

Achromatomaly
CDB8BD

CSS Examples

Text

The CSS property to change the color of the text to Hex E5ACB9 is called "color". The color property can be set on classes, ids or directly on the HTML element.

This example shows how text in the color #E5ACB9 looks like.

```
.text, #text, p{  
    color:#E5ACB9  
}
```

If you want to add a text shadow in that color use the text-shadow property, you can generate a text shadow directly with our [CSS Text Shadow Generator](#).

Here you see how black text with a 4 pixel #E5ACB9 colored shadow looks like.

```
.shadow{ text-shadow: 4px 4px 2px #E5ACB9
}
```

Border

The CSS property to change the border of an element to Hex E5ACB9 is called "border". The border property can be set on classes, ids or directly on the HTML element.

This example shows the color as border, it can be applied via the CSS property "border" or "border-color".

```
.border, #border, table{ border:4px solid
#E5ACB9 }
```

If only the border color should be changed use the property `border-color`.

```
.border{ border-color:#E5ACB9 }
```

If you want to add a box shadow in that color use:

Here you see how a box with a 4 pixel #E5ACB9 colored shadow looks like.

```
.boxshadow{ -moz-box-shadow:4px 4px 4px  
4px #E5ACB9; -webkit-box-shadow:4px 4px  
4px 4px #E5ACB9; box-shadow:4px 4px 4px  
4px #E5ACB9 }
```

Background

The CSS property to change the background color of an element to Hex E5ACB9 is called "background". The background property can be set on classes, ids or directly on the HTML element.

```
.background, #background, body{  
background:#E5ACB9 }
```

If only the background color should be changed can be used:

```
.background{ background-color:#E5ACB9 }
```

This example shows the color as background, it is applied via the CSS property "background".

To optimize and compress your CSS code, you can use our [online CSS compressor and optimizer](#) based on csstidy. If you want to create a linear or radial gradient as background or border, check our [CSS Gradient Generator](#).

Hey! You found this booklet interesting? Support Converting Colors with the new Membership Option!

The pro membership hides all ads, plus gives you double the colors in the color bucket, and more awesome pro features!

[Learn more, Memberships starting at \\$2.50/m!](#)

**Follow me
on Twitter!**

@ConvertingColor