

# Converting Colors

Hex(E5B2C4)

Have a look what the booklet for  
Hex(E5B2C4) contains.

<b>Hex(E5B2C4)</b> .....	3
<i><b>Conversions</b></i> .....	4
<i><b>Details</b></i> .....	6
<i><b>Harmonies</b></i> .....	11
<i><b>Previews</b></i> .....	23
<i><b>Color Blindness Simulation</b></i> .....	26
<i><b>CSS Examples</b></i> .....	29

# **Color**

**Hex(E5B2C4)**

# Conversions

## Conversions Part 1

Format	Color
Hex	E5B2C4
RGB	229, 178, 196
RGB Percent	90%, 70%, 77%
CMY	0.1020, 0.3020, 0.2314
CMYK	0.00, 0.22, 0.14, 0.10
HSL	339°, 50%, 80%
HSV	339°, 22%, 90%
XYZ	58.1973, 52.4843, 59.2877
YIQ	195.3010, 24.6180, 16.4100

# Conversions

## Conversions Part 2

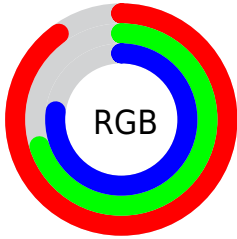
<b>Format</b>	<b>Color</b>
R <sub>Y</sub> B	229, 178, 196
Decimal	15053508
CIE Lab	77.57, 21.26, -1.99
CIE LCh	78, 21.355, 354.652
Yxy	52.4843, 0.3424, 0.3088
Android (android.graphics.Color)	4293243588 (0xFFE5B2C4)
YUV	195.3010, 0.3446, 29.5540
Hunter-Lab	72.4461, 16.6118, 2.1911

# Details

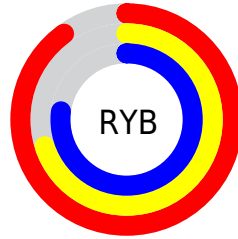
The Hex color **E5B2C4** is a light color, and the websafe version is hex **FFCCCC**. A complement of this color would be **B2E5D3**, and the grayscale version is **C3C3C3**.

A 20% lighter version of the original color is **FFEAFD**, and **AD7D8E** is the 20% darker color. If you saturate the color by 10%, you get **E59BB5**, and if you desaturate by 10%, it is **E5C9D3**.

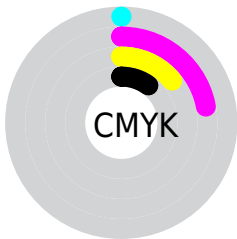
# Distribution



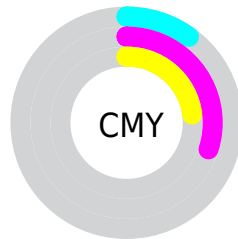
- Red (90%)
- Green (70%)
- Blue (77%)



- Red (90%)
- Yellow (70%)
- Blue (77%)



- Cyan (0%)
- Magenta (22%)
- Yellow (14%)
- Black (10%)



- Cyan (10%)
- Magenta (30%)
- Yellow (23%)

# Brightness & Saturation Gradients

These gradients show how the Hex color E5B2C4 changes by changing the brightness by 10 percent. The first figure shows a shift by +10% for each color and the second figure -10%.

Similar to the brightness gradients but the following saturation gradients show a change of the Hex color E5B2C4 by changing the saturation by 10% instead.



 E5B2C4

 E5B2C4

FFFFFF

 C997A9

 FFEAFD

 AD7D8E

 926475

 784C5C

 5E3445

 461E2E

 2E081A

 170000

 000000

 E5B2C4

 E5B2C4

 E59BB5

 E5C9D3

 E584A6

 E5E0E2

 E56D98

 E5F7F0

 E55689

 E5FFFF

 E53F7A

 E5296B

 E5125C

 E50051

# Harmonies

## Analogous

The Analogous color harmony consists of three colors that are next to each other on the color wheel.



D6B6D7



E5B2C4



E9B2B0

# Triad

The Triadic color harmony groups three colors that are evenly spaced from another and form a triangle on the color wheel.



E5B2C4



BDC39C



90C8DF

# Complementary

The Complementary color scheme is a pair of colors which are on the opposite of each other on the color wheel.



E5B2C4



B2E5D3

# Split Complementary

Split-complementary colors differ from the complementary color scheme. The scheme consists of three colors, the original color and two neighbors of the complement color.



8ACBCF



E5B2C4



A7C8A8

# Square

The Square scheme is like the rectangle color scheme, but the four colors are evenly spaced on the color wheel.



E5B2C4



D2BD99



93CBBB



A4C3E7

# Rectangle

The Rectangle color scheme consists of four colors that form a rectangle on the color wheel.



E5B2C4



E5B5A5



93CBBB



8CC9DB



# Sweetspot

The Sweet Spot groups the original color and five complimentary colors.



E5B2C4



FFEDF3



D2B2E5



807579



000000



808080



# Same Dimension

The Same Dimension uses a secret algorithm to generate beautiful new colors.



E5B2C4



FFBAD2



E5B9B2



73676B



B3003F



330012



# Inverse Universe

The Inverse Universe completely reimagines the original color for something new.



E5B2C4



FFBAD2



B2DEE5



73676B



B3003F

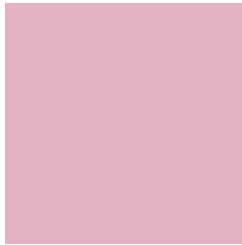


330012



# Previews

## White Background



This preview shows how the Hex color E5B2C4 looks on a white background.

## Color Contrast Check

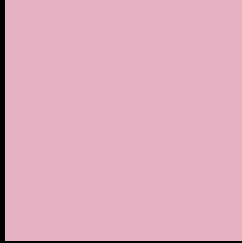
Large Text (above 18pt) WCAG AA × Fail

Any Text WCAG AA × Fail

Large Text (above 18pt) WCAG AAA × Fail

Any Text WCAG AAA × Fail

# Black Background



This preview shows how the Hex color E5B2C4 looks on a black background.

## Color Contrast Check

Large Text (above 18pt) WCAG AA ✓ Pass

Any Text WCAG AA ✓ Pass

Large Text (above 18pt) WCAG AAA ✓ Pass

Any Text WCAG AAA ✓ Pass

If you want to check with other color combinations, try the [Color Contrast Checker](#).



## Hex E5B2C4 Background



This preview shows how black text looks on a background with the Hex color E5B2C4.

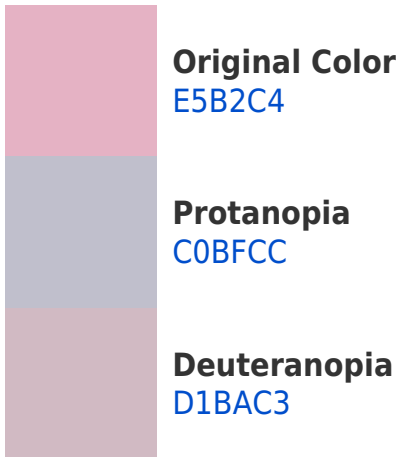


This preview shows how white text looks on a background with the Hex color E5B2C4.

# Color Blindness Simulation

Color vision deficiency is a very complex topic, and I could not describe the different causes any better than Wikipedia does, so if you want to learn more, you should check out their [article about color blindness](#).

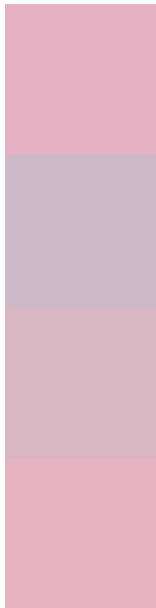
## Dichromacy





**Tritanopia**  
E5B3C0

# Trichromacy



**Original Color**  
E5B2C4

**Protanomaly**  
CDBAC9

**Deuteranomaly**  
D8B7C3

**Tritanomaly**  
E5B3C1

# Monochromacy



**Original Color**  
E5B2C4

**Achromatopsia**  
C3C3C3

**Achromatomaly**  
CFBDC3

# CSS Examples

## Text

The CSS property to change the color of the text to Hex E5B2C4 is called "color". The color property can be set on classes, ids or directly on the HTML element.

This example shows how text in the color #E5B2C4 looks like.

```
.text, #text, p{  
    color:#E5B2C4  
}
```

If you want to add a text shadow in that color use the text-shadow property, you can generate a text shadow directly with our [CSS Text Shadow Generator](#).

Here you see how black text with a 4 pixel #E5B2C4 colored shadow looks like.

```
.shadow{ text-shadow: 4px 4px 2px #E5B2C4
}
```

## Border

The CSS property to change the border of an element to Hex E5B2C4 is called "border". The border property can be set on classes, ids or directly on the HTML element.

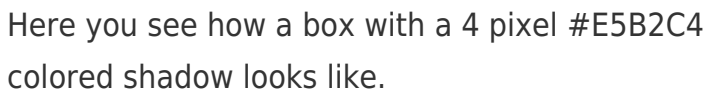
This example shows the color as border, it can be applied via the CSS property "border" or "border-color".

```
.border, #border, table{ border:4px solid
#E5B2C4 }
```

If only the border color should be changed use the property `border-color`.

```
.border{ border-color:#E5B2C4 }
```

If you want to add a box shadow in that color use:



Here you see how a box with a 4 pixel #E5B2C4 colored shadow looks like.

```
.boxshadow{ -moz-box-shadow:4px 4px 4px  
4px #E5B2C4; -webkit-box-shadow:4px 4px  
4px 4px #E5B2C4; box-shadow:4px 4px 4px  
4px #E5B2C4 }
```

# Background

The CSS property to change the background color of an element to Hex E5B2C4 is called "background". The background property can be set on classes, ids or directly on the HTML element.

```
.background, #background, body{  
background:#E5B2C4 }
```

If only the background color should be changed can be used:

```
.background{ background-color:#E5B2C4 }
```

This example shows the color as background, it is applied via the CSS property "background".

To optimize and compress your CSS code, you can use our [online CSS compressor and optimizer](#) based on csstidy. If you want to create a linear or radial gradient as background or border, check our [CSS Gradient Generator](#).



Hey! You found this booklet interesting? Support Converting Colors with the new Membership Option!

The pro membership hides all ads, plus gives you double the colors in the color bucket, and more awesome pro features!

**[Learn more, Memberships starting at \\$2.50/m!](#)**

**Follow me  
on Twitter!**

@ConvertingColor