

Converting Colors

Hex(E5B69E)

Have a look what the booklet for
Hex(E5B69E) contains.

Hex(E5B69E)	3
<i>Conversions</i>	4
<i>Details</i>	6
<i>Harmonies</i>	11
<i>Previews</i>	23
<i>Color Blindness Simulation</i>	26
<i>CSS Examples</i>	29

Color

Hex(E5B69E)

Conversions

Conversions Part 1

Format	Color
Hex	E5B69E
RGB	229, 182, 158
RGB Percent	90%, 71%, 62%
CMY	0.1020, 0.2863, 0.3804
CMYK	0.00, 0.21, 0.31, 0.10
HSL	20°, 58%, 76%
HSV	20°, 31%, 90%
XYZ	55.2126, 52.5825, 39.5872
YIQ	193.3170, 35.7160, 2.5000

Conversions

Conversions Part 2

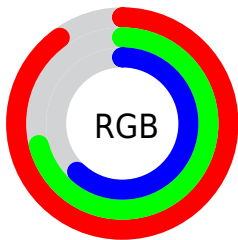
Format	Color
R_{YB}	229, 194, 158
Decimal	15054494
CIE _{Lab}	77.63, 13.62, 18.68
CIE _{LCh}	78, 23.122, 53.898
Yxy	52.5825, 0.3746, 0.3568
Android (android.graphics.Color)	4293244574 (0xFFE5B69E)
YUV	193.3170, -17.4113, 31.2940
Hunter-Lab	72.5138, 9.0122, 18.3917

Details

The Hex color **E5B69E** is a light color, and the websafe version is hex **FFCCCC**. A complement of this color would be **9ECDE5**, and the grayscale version is **C1C1C1**.

A 20% lighter version of the original color is **FFEED5**, and **AC816B** is the 20% darker color. If you saturate the color by 10%, you get **E5A787**, and if you desaturate by 10%, it is **E5C5B5**.

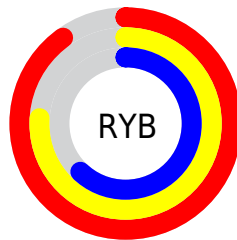
Distribution



Red (90%)

Green (71%)

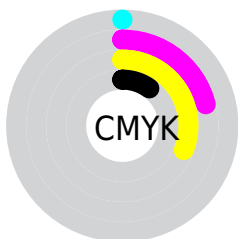
Blue (62%)



Red (90%)

Yellow (76%)

Blue (62%)

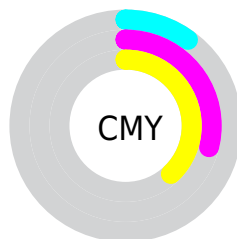


Cyan (0%)

Magenta (21%)

Yellow (31%)

Black (10%)



Cyan (10%)

Magenta (29%)

Yellow (38%)

Brightness & Saturation Gradients

These gradients show how the Hex color E5B69E changes by changing the brightness by 10 percent. The first figure shows a shift by +10% for each color and the second figure -10%.

Similar to the brightness gradients but the following saturation gradients show a change of the Hex color E5B69E by changing the saturation by 10% instead.

 E5B69E

 E5B69E

FFFFFF

 C89B84

 FFEED5

 AC816B

 FFFFF1

 916852

 76503B

 5C3925

 432310

 2C0E00

 090000

 000000

 E5B69E

 E5B69E

 E5A787

 E5C5B5

 E59870

 E5D4CC

 E58959

 E5E3E3

 E57942

 E5F3FA

 E56A2B

 E5FFFF

 E55B15

 E54D00

Harmonies

Analogous

The Analogous color harmony consists of three colors that are next to each other on the color wheel.



ECB1AF



E5B69E



D4BD95

Triad

The Triadic color harmony groups three colors that are evenly spaced from another and form a triangle on the color wheel.



E5B69E



90CCBB



BEBCE7

Complementary

The Complementary color scheme is a pair of colors which are on the opposite of each other on the color wheel.



E5B69E



9ECDE5

Split Complementary

Split-complementary colors differ from the complementary color scheme. The scheme consists of three colors, the original color and two neighbors of the complement color.



A1C3EA



E5B69E



84CCD0

Square

The Square scheme is like the rectangle color scheme, but the four colors are evenly spaced on the color wheel.



E5B69E



A5C9A6



8BC9E2



D7B5D9

Rectangle

The Rectangle color scheme consists of four colors that form a rectangle on the color wheel.



E5B69E



C6C296



8BC9E2



B4BEE9

Sweetspot

The Sweet Spot groups the original color and five complimentary colors.



E5B69E



FFF0E8



E59ECD



807671



000000



808080

Same Dimension

The Same Dimension uses a secret algorithm to generate beautiful new colors.



E5B69E



FFC1A1



E5D99E



736B67



B33C00



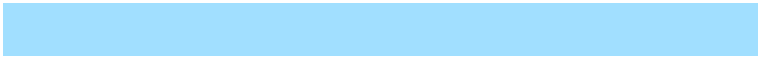
331100

Inverse Universe

The Inverse Universe completely reimagines the original color for something new.



9ECDE5



A1DFFF



9EAAE5



676F73



0076B3



002233

Previews

White Background



This preview shows how the Hex color E5B69E looks on a white background.

Color Contrast Check

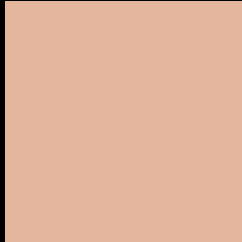
Large Text (above 18pt) WCAG AA × Fail

Any Text WCAG AA × Fail

Large Text (above 18pt) WCAG AAA × Fail

Any Text WCAG AAA × Fail

Black Background



This preview shows how the Hex color E5B69E looks on a black background.

Color Contrast Check

Large Text (above 18pt) WCAG AA ✓ Pass

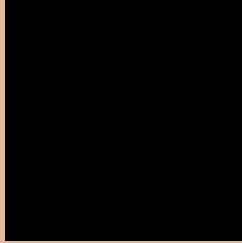
Any Text WCAG AA ✓ Pass

Large Text (above 18pt) WCAG AAA ✓ Pass

Any Text WCAG AAA ✓ Pass

If you want to check with other color combinations, try the [Color Contrast Checker](#).

Hex E5B69E Background



This preview shows how black text looks on a background with the Hex color E5B69E.

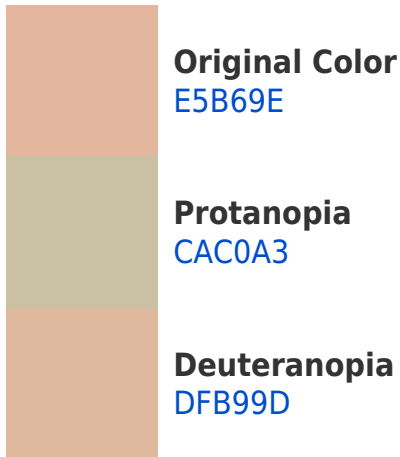


This preview shows how white text looks on a background with the Hex color E5B69E.

Color Blindness Simulation

Color vision deficiency is a very complex topic, and I could not describe the different causes any better than Wikipedia does, so if you want to learn more, you should check out their [article about color blindness](#).

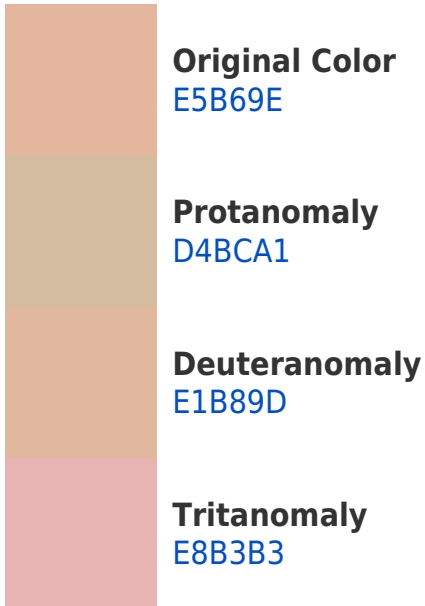
Dichromacy



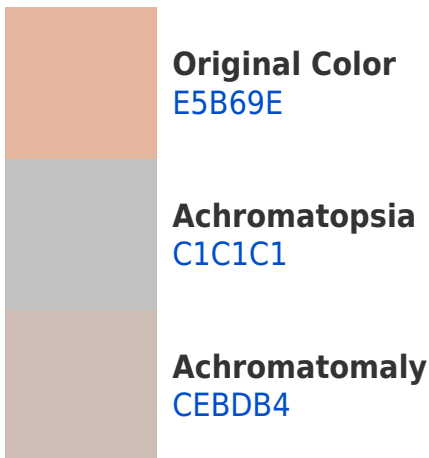


Tritanopia
E9B1BF

Trichromacy



Monochromacy



CSS Examples

Text

The CSS property to change the color of the text to Hex E5B69E is called "color". The color property can be set on classes, ids or directly on the HTML element.

This example shows how text in the color #E5B69E looks like.

```
.text, #text, p{  
    color:#E5B69E  
}
```

If you want to add a text shadow in that color use the text-shadow property, you can generate a text shadow directly with our [CSS Text Shadow Generator](#).

Here you see how black text with a 4 pixel #E5B69E colored shadow looks like.

```
.shadow{ text-shadow: 4px 4px 2px #E5B69E
}
```

Border

The CSS property to change the border of an element to Hex E5B69E is called "border". The border property can be set on classes, ids or directly on the HTML element.

This example shows the color as border, it can be applied via the CSS property "border" or "border-color".

```
.border, #border, table{ border:4px solid
#E5B69E }
```

If only the border color should be changed use the property `border-color`.

```
.border{ border-color:#E5B69E }
```

If you want to add a box shadow in that color use:

Here you see how a box with a 4 pixel #E5B69E colored shadow looks like.

```
.boxshadow{ -moz-box-shadow:4px 4px 4px  
4px #E5B69E; -webkit-box-shadow:4px 4px  
4px 4px #E5B69E; box-shadow:4px 4px 4px  
4px #E5B69E }
```

Background

The CSS property to change the background color of an element to Hex E5B69E is called "background". The background property can be set on classes, ids or directly on the HTML element.

```
.background, #background, body{  
background:#E5B69E }
```

If only the background color should be changed can be used:

```
.background{ background-color:#E5B69E }
```

This example shows the color as background, it is applied via the CSS property "background".

To optimize and compress your CSS code, you can use our [online CSS compressor and optimizer](#) based on csstidy. If you want to create a linear or radial gradient as background or border, check our [CSS Gradient Generator](#).

Hey! You found this booklet interesting? Support Converting Colors with the new Membership Option!

The pro membership hides all ads, plus gives you double the colors in the color bucket, and more awesome pro features!

[Learn more, Memberships starting at \\$2.50/m!](#)

**Follow me
on Twitter!**

@ConvertingColor