

Converting Colors

Hex(E5B7B6)

Have a look what the booklet for
Hex(E5B7B6) contains.

Hex(E5B7B6)	3
<i>Conversions</i>	4
<i>Details</i>	6
<i>Harmonies</i>	11
<i>Previews</i>	23
<i>Color Blindness Simulation</i>	26
<i>CSS Examples</i>	29

Color

Hex(E5B7B6)

Conversions

Conversions Part 1

Format	Color
Hex	E5B7B6
RGB	229, 183, 182
RGB Percent	90%, 72%, 71%
CMY	0.1020, 0.2824, 0.2863
CMYK	0.00, 0.20, 0.21, 0.10
HSL	1°, 47%, 81%
HSV	1°, 21%, 90%
XYZ	57.6901, 53.9024, 51.6196
YIQ	196.6400, 27.7370, 9.4410

Conversions

Conversions Part 2

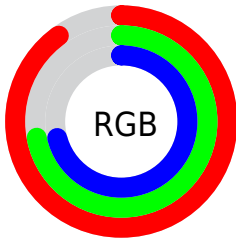
Format	Color
R _Y B	229, 183, 182
Decimal	15054774
CIE _{Lab}	78.40, 16.42, 6.82
CIE _{LCh}	78, 17.783, 22.545
Y _{xy}	53.9024, 0.3535, 0.3303
Android (android.graphics.Color)	4293244854 (0xFFE5B7B6)
Y _{UV}	196.6400, -7.2175, 28.3797
Hunter-Lab	73.4182, 11.7786, 9.7066

Details

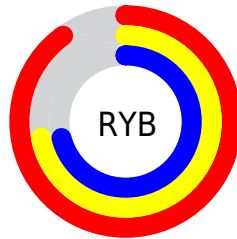
The Hex color **E5B7B6** is a light color, and the websafe version is hex **FFCCCC**. A complement of this color would be **B6E4E5**, and the grayscale version is **C5C5C5**.

A 20% lighter version of the original color is **FFEFEE**, and **AD8281** is the 20% darker color. If you saturate the color by 10%, you get **E5A19F**, and if you desaturate by 10%, it is **E5CDCD**.

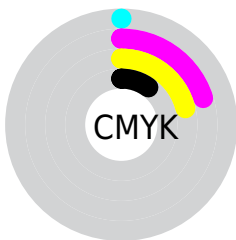
Distribution



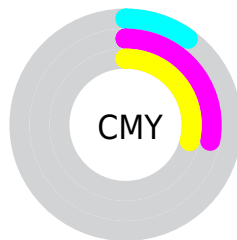
- Red (90%)
- Green (72%)
- Blue (71%)



- Red (90%)
- Yellow (72%)
- Blue (71%)



- Cyan (0%)
- Magenta (20%)
- Yellow (21%)
- Black (10%)



- Cyan (10%)
- Magenta (28%)
- Yellow (29%)

Brightness & Saturation Gradients

These gradients show how the Hex color E5B7B6 changes by changing the brightness by 10 percent. The first figure shows a shift by +10% for each color and the second figure -10%.

Similar to the brightness gradients but the following saturation gradients show a change of the Hex color E5B7B6 by changing the saturation by 10% instead.

 E5B7B6

 E5B7B6

FFFFFF

 C99C9B

 FFEFEE

 AD8281

 926968

 775050

 5E3939

 452324

 2E0E0E

 150000

 000000

 E5B7B6

 E5B7B6

 E5A19F

 E5CDCD

 E58A88

 E5E4E4

 E57471

 E5FAFB

 E55D5A

 E5FFFF

 E54744

 E5312D

 E51A16

 E50500

Harmonies

Analogous

The Analogous color harmony consists of three colors that are next to each other on the color wheel.



E1B7C7



E5B7B6



E0BAA8

Triad

The Triadic color harmony groups three colors that are evenly spaced from another and form a triangle on the color wheel.



E5B7B6



AFC9AD



ABC5E2

Complementary

The Complementary color scheme is a pair of colors which are on the opposite of each other on the color wheel.



E5B7B6



B6E4E5

Split Complementary

Split-complementary colors differ from the complementary color scheme. The scheme consists of three colors, the original color and two neighbors of the complement color.



9BC9DC



E5B7B6



9FCBBD

Square

The Square scheme is like the rectangle color scheme, but the four colors are evenly spaced on the color wheel.



E5B7B6



C2C5A3



97CBCE



COBFEO

Rectangle

The Rectangle color scheme consists of four colors that form a rectangle on the color wheel.



E5B7B6



D8BEA3



97CBCE



A4C6E1

Sweetspot

The Sweet Spot groups the original color and five complimentary colors.



E5B7B6



FFF0F0



E5B6E4



807777



000000



808080

Same Dimension

The Same Dimension uses a secret algorithm to generate beautiful new colors.



E5B7B6



FFC1BF



E5CEB6



736867



B30400



330100

Inverse Universe

The Inverse Universe completely reimagines the original color for something new.



B6E4E5



BFFEFF



B6CDE5



677373



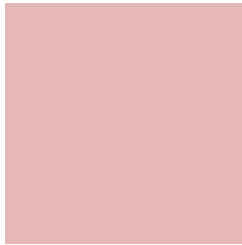
00AFB3



003233

Previews

White Background



This preview shows how the Hex color E5B7B6 looks on a white background.

Color Contrast Check

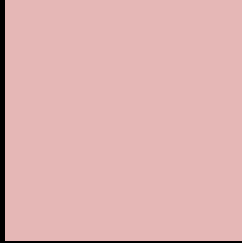
Large Text (above 18pt) WCAG AA × Fail

Any Text WCAG AA × Fail

Large Text (above 18pt) WCAG AAA × Fail

Any Text WCAG AAA × Fail

Black Background



This preview shows how the Hex color E5B7B6 looks on a black background.

Color Contrast Check

Large Text (above 18pt) WCAG AA ✓ Pass

Any Text WCAG AA ✓ Pass

Large Text (above 18pt) WCAG AAA ✓ Pass

Any Text WCAG AAA ✓ Pass

If you want to check with other color combinations, try the [Color Contrast Checker](#).

Hex E5B7B6 Background



This preview shows how black text looks on a background with the Hex color E5B7B6.

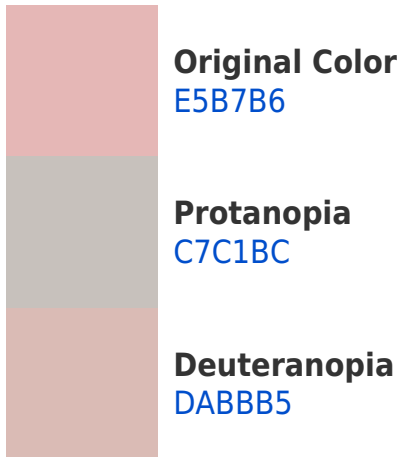


This preview shows how white text looks on a background with the Hex color E5B7B6.

Color Blindness Simulation

Color vision deficiency is a very complex topic, and I could not describe the different causes any better than Wikipedia does, so if you want to learn more, you should check out their [article about color blindness](#).

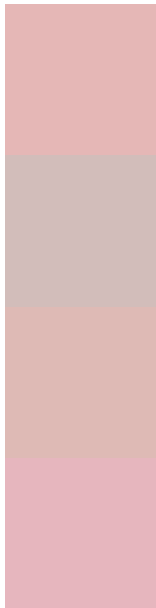
Dichromacy





Tritanopia
E7B5C3

Trichromacy



Original Color
E5B7B6

Protanomaly
D2BDBA

Deuteranomaly
DEBAB5

Tritanomaly
E6B6BE

Monochromacy



Original Color
E5B7B6

Achromatopsia
C5C5C5

Achromatomaly
D1C0C0

CSS Examples

Text

The CSS property to change the color of the text to Hex E5B7B6 is called "color". The color property can be set on classes, ids or directly on the HTML element.

This example shows how text in the color #E5B7B6 looks like.

```
.text, #text, p{  
    color:#E5B7B6  
}
```

If you want to add a text shadow in that color use the text-shadow property, you can generate a text shadow directly with our [CSS Text Shadow Generator](#).

Here you see how black text with a 4 pixel #E5B7B6 colored shadow looks like.

```
.shadow{ text-shadow: 4px 4px 2px #E5B7B6
}
```

Border

The CSS property to change the border of an element to Hex E5B7B6 is called "border". The border property can be set on classes, ids or directly on the HTML element.

This example shows the color as border, it can be applied via the CSS property "border" or "border-color".

```
.border, #border, table{ border:4px solid
#E5B7B6 }
```

If only the border color should be changed use the property `border-color`.

```
.border{ border-color:#E5B7B6 }
```

If you want to add a box shadow in that color use:

Here you see how a box with a 4 pixel #E5B7B6 colored shadow looks like.

```
.boxshadow{ -moz-box-shadow:4px 4px 4px  
4px #E5B7B6; -webkit-box-shadow:4px 4px  
4px 4px #E5B7B6; box-shadow:4px 4px 4px  
4px #E5B7B6 }
```

Background

The CSS property to change the background color of an element to Hex E5B7B6 is called "background". The background property can be set on classes, ids or directly on the HTML element.

```
.background, #background, body{  
background:#E5B7B6 }
```

If only the background color should be changed can be used:

```
.background{ background-color:#E5B7B6 }
```

This example shows the color as background, it is applied via the CSS property "background".

To optimize and compress your CSS code, you can use our [online CSS compressor and optimizer](#) based on csstidy. If you want to create a linear or radial gradient as background or border, check our [CSS Gradient Generator](#).

Hey! You found this booklet interesting? Support Converting Colors with the new Membership Option!

The pro membership hides all ads, plus gives you double the colors in the color bucket, and more awesome pro features!

[Learn more, Memberships starting at \\$2.50/m!](#)

**Follow me
on Twitter!**

@ConvertingColor