

Converting Colors

Hex(E5B9BB)

Have a look what the booklet for
Hex(E5B9BB) contains.

Hex(E5B9BB)	3
<i>Conversions</i>	4
<i>Details</i>	6
<i>Harmonies</i>	11
<i>Previews</i>	23
<i>Color Blindness Simulation</i>	26
<i>CSS Examples</i>	29

Color

Hex(E5B9BB)

Conversions

Conversions Part 1

Format	Color
Hex	E5B9BB
RGB	229, 185, 187
RGB Percent	90%, 73%, 73%
CMY	0.1020, 0.2745, 0.2667
CMYK	0.00, 0.19, 0.18, 0.10
HSL	357°, 46%, 81%
HSV	357°, 19%, 90%
XYZ	58.6317, 54.9438, 54.5287
YIQ	198.3840, 25.5820, 9.9500

Conversions

Conversions Part 2

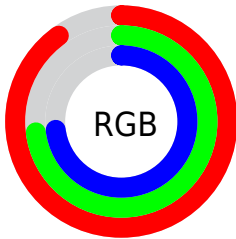
Format	Color
R _Y B	229, 185, 187
Decimal	15055291
CIE Lab	79.01, 16.11, 4.98
CIE LCh	79, 16.865, 17.188
Yxy	54.9438, 0.3488, 0.3268
Android (android.graphics.Color)	4293245371 (0xFFE5B9BB)
YUV	198.3840, -5.6123, 26.8502
Hunter-Lab	74.1241, 11.4753, 8.2707

Details

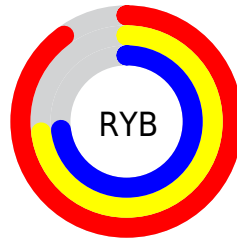
The Hex color **E5B9BB** is a light color, and the websafe version is hex **FFCCCC**. A complement of this color would be **B9E5E3**, and the grayscale version is **C6C6C6**.

A 20% lighter version of the original color is **FFF1F3**, and **AD8486** is the 20% darker color. If you saturate the color by 10%, you get **E5A2A5**, and if you desaturate by 10%, it is **E5D0D1**.

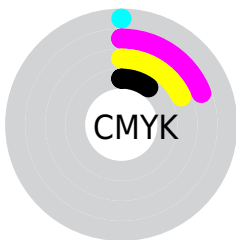
Distribution



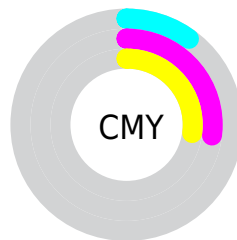
- Red (90%)
- Green (73%)
- Blue (73%)



- Red (90%)
- Yellow (73%)
- Blue (73%)



- Cyan (0%)
- Magenta (19%)
- Yellow (18%)
- Black (10%)



- Cyan (10%)
- Magenta (27%)
- Yellow (27%)

Brightness & Saturation Gradients

These gradients show how the Hex color E5B9BB changes by changing the brightness by 10 percent. The first figure shows a shift by +10% for each color and the second figure -10%.

Similar to the brightness gradients but the following saturation gradients show a change of the Hex color E5B9BB by changing the saturation by 10% instead.

 E5B9BB

 E5B9BB

FFFFFF

 C99EA0

 FFF1F3

 AD8486

 926A6D

 785254

 5E3B3D

 462528

 2E1013

 180001

 000000

 E5B9BB

 E5B9BB

 E5A2A5

 E5D0D1

 E58B8F

 E5E7E7

 E57479

 E5FEFD

 E55D64

 E5FFFF

 E5464E

 E53038

 E51922

 E5020C

 E5000A

Harmonies

Analogous

The Analogous color harmony consists of three colors that are next to each other on the color wheel.



DFB9CB



E5B9BB



E2BCAD

Triad

The Triadic color harmony groups three colors that are evenly spaced from another and form a triangle on the color wheel.



E5B9BB



B4CAAE



AAC7E2

Complementary

The Complementary color scheme is a pair of colors which are on the opposite of each other on the color wheel.



E5B9BB



B9E5E3

Split Complementary

Split-complementary colors differ from the complementary color scheme. The scheme consists of three colors, the original color and two neighbors of the complement color.



9DCBDA



E5B9BB



A4CCBC

Square

The Square scheme is like the rectangle color scheme, but the four colors are evenly spaced on the color wheel.



E5B9BB



C7C5A6



9BCDCC



BEC2E1

Rectangle

The Rectangle color scheme consists of four colors that form a rectangle on the color wheel.



E5B9BB



DBBFA7



9BCDCC



A5C9E0

Sweetspot

The Sweet Spot groups the original color and five complimentary colors.



E5B9BB



FFF0F0



E3B9E5



807777



000000



808080

Same Dimension

The Same Dimension uses a secret algorithm to generate beautiful new colors.



E5B9BB



FFC4C7



E5CDB9



736768



B30008



330002

Inverse Universe

The Inverse Universe completely reimagines the original color for something new.



E5B9BB



FFC4C7



B9D1E5



736768



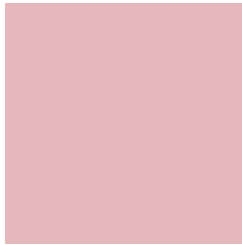
B30008



330002

Previews

White Background



This preview shows how the Hex color E5B9BB looks on a white background.

Color Contrast Check

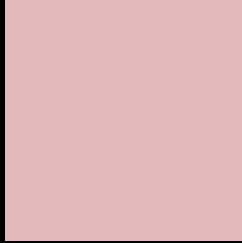
Large Text (above 18pt) WCAG AA × Fail

Any Text WCAG AA × Fail

Large Text (above 18pt) WCAG AAA × Fail

Any Text WCAG AAA × Fail

Black Background



This preview shows how the Hex color E5B9BB looks on a black background.

Color Contrast Check

Large Text (above 18pt) WCAG AA ✓ Pass

Any Text WCAG AA ✓ Pass

Large Text (above 18pt) WCAG AAA ✓ Pass

Any Text WCAG AAA ✓ Pass

If you want to check with other color combinations, try the [Color Contrast Checker](#).

Hex E5B9BB Background



This preview shows how black text looks on a background with the Hex color E5B9BB.

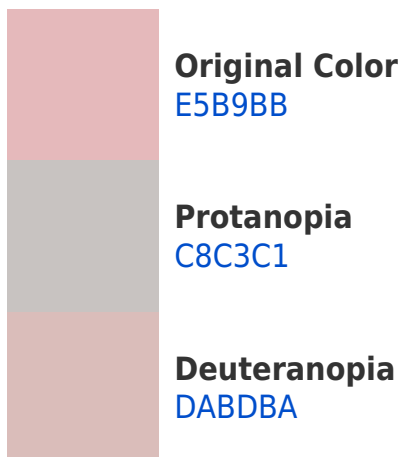


This preview shows how white text looks on a background with the Hex color E5B9BB.

Color Blindness Simulation

Color vision deficiency is a very complex topic, and I could not describe the different causes any better than Wikipedia does, so if you want to learn more, you should check out their [article about color blindness](#).

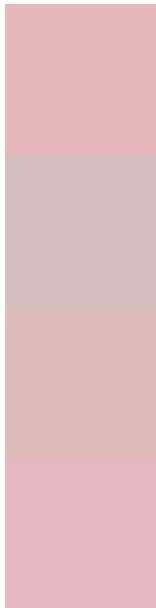
Dichromacy





Tritanopia
E6B7C6

Trichromacy



Original Color
E5B9BB

Protanomaly
D3BFBF

Deuteranomaly
DEBCBA

Tritanomaly
E6B8C2

Monochromacy



Original Color
E5B9BB

Achromatopsia
C6C6C6

Achromatomaly
D1C1C2

CSS Examples

Text

The CSS property to change the color of the text to Hex E5B9BB is called "color". The color property can be set on classes, ids or directly on the HTML element.

This example shows how text in the color #E5B9BB looks like.

```
.text, #text, p{  
    color:#E5B9BB  
}
```

If you want to add a text shadow in that color use the text-shadow property, you can generate a text shadow directly with our [CSS Text Shadow Generator](#).

Here you see how black text with a 4 pixel #E5B9BB colored shadow looks like.

```
.shadow{ text-shadow: 4px 4px 2px #E5B9BB  
}
```

Border

The CSS property to change the border of an element to Hex E5B9BB is called "border". The border property can be set on classes, ids or directly on the HTML element.

This example shows the color as border, it can be applied via the CSS property "border" or "border-color".

```
.border, #border, table{ border:4px solid  
#E5B9BB }
```

If only the border color should be changed use the property `border-color`.

```
.border{ border-color:#E5B9BB }
```

If you want to add a box shadow in that color use:

Here you see how a box with a 4 pixel #E5B9BB colored shadow looks like.

```
.boxshadow{ -moz-box-shadow:4px 4px 4px  
4px #E5B9BB; -webkit-box-shadow:4px 4px  
4px 4px #E5B9BB; box-shadow:4px 4px 4px  
4px #E5B9BB }
```

Background

The CSS property to change the background color of an element to Hex E5B9BB is called "background". The background property can be set on classes, ids or directly on the HTML element.

```
.background, #background, body{  
background:#E5B9BB }
```

If only the background color should be changed can be used:

```
.background{ background-color:#E5B9BB }
```

This example shows the color as background, it is applied via the CSS property "background".

To optimize and compress your CSS code, you can use our [online CSS compressor and optimizer](#) based on csstidy. If you want to create a linear or radial gradient as background or border, check our [CSS Gradient Generator](#).

Hey! You found this booklet interesting? Support Converting Colors with the new Membership Option!

The pro membership hides all ads, plus gives you double the colors in the color bucket, and more awesome pro features!

[Learn more, Memberships starting at \\$2.50/m!](#)

**Follow me
on Twitter!**

@ConvertingColor