

# Converting Colors

Hex(E5BEAD)

Have a look what the booklet for  
Hex(E5BEAD) contains.

<b>Hex(E5BEAD)</b> .....	3
<i><b>Conversions</b></i> .....	4
<i><b>Details</b></i> .....	6
<i><b>Harmonies</b></i> .....	11
<i><b>Previews</b></i> .....	23
<i><b>Color Blindness Simulation</b></i> .....	26
<i><b>CSS Examples</b></i> .....	29

# **Color**

**Hex(E5BEAD)**

# Conversions

## Conversions Part 1

<b>Format</b>	<b>Color</b>
Hex	E5BEAD
RGB	229, 190, 173
RGB Percent	90%, 75%, 68%
CMY	0.1020, 0.2549, 0.3216
CMYK	0.00, 0.17, 0.24, 0.10
HSL	18°, 52%, 79%
HSV	18°, 24%, 90%
XYZ	58.2694, 56.5021, 47.3700
YIQ	199.7230, 28.7010, 2.9810

# Conversions

## Conversions Part 2

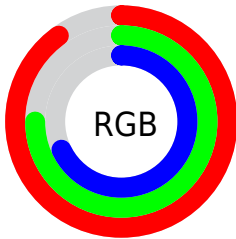
Format	Color
R <sub>Y</sub> B	229, 197, 173
Decimal	15056557
CIE Lab	79.90, 11.40, 13.80
CIE LCh	80, 17.895, 50.440
Yxy	56.5021, 0.3594, 0.3485
Android (android.graphics.Color)	4293246637 (0xFFE5BEAD)
YUV	199.7230, -13.1744, 25.6759
Hunter-Lab	75.1678, 6.8277, 15.2535

# Details

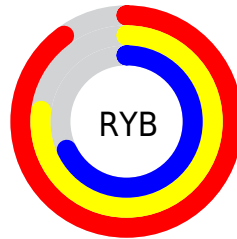
The Hex color **E5BEAD** is a light color, and the websafe version is hex **FFCCCC**. A complement of this color would be **ADD4E5**, and the grayscale version is **C8C8C8**.

A 20% lighter version of the original color is **FFF6E4**, and **AD8979** is the 20% darker color. If you saturate the color by 10%, you get **E5AE96**, and if you desaturate by 10%, it is **E5CEC4**.

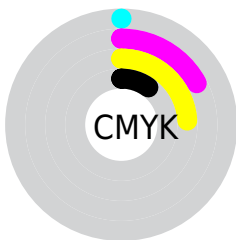
# Distribution



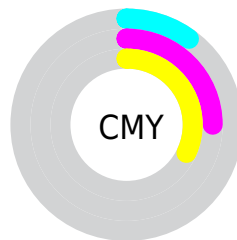
- Red (90%)
- Green (75%)
- Blue (68%)



- Red (90%)
- Yellow (77%)
- Blue (68%)



- Cyan (0%)
- Magenta (17%)
- Yellow (24%)
- Black (10%)



- Cyan (10%)
- Magenta (25%)
- Yellow (32%)

# Brightness & Saturation Gradients

These gradients show how the Hex color E5BEAD changes by changing the brightness by 10 percent. The first figure shows a shift by +10% for each color and the second figure -10%.

Similar to the brightness gradients but the following saturation gradients show a change of the Hex color E5BEAD by changing the saturation by 10% instead.



 E5BEAD

FFFFFF

 FFF6E4

 E5BEAD

 C9A392

 AD8979

 926F60

 775748

 5E3F32

 45291C

 2E1503

 170000

 000000

 E5BEAD

 E5BEAD

 E5AE96

 E5CEC4

 E59E7F

 E5DEDB

 E58E68

 E5EEF2

 E57E51

 E5FEFF

 E56E3B

 E5FFFF

 E55E24

 E54E0D

 E54600

# Harmonies

## Analogous

The Analogous color harmony consists of three colors that are next to each other on the color wheel.



EABBBB



E5BEAD



D9C3A6

# Triad

The Triadic color harmony groups three colors that are evenly spaced from another and form a triangle on the color wheel.



E5BEAD



A3D0C0



C2C4E5

# Complementary

The Complementary color scheme is a pair of colors which are on the opposite of each other on the color wheel.



E5BEAD



ADD4E5

# Split Complementary

Split-complementary colors differ from the complementary color scheme. The scheme consists of three colors, the original color and two neighbors of the complement color.



ADC9E7



E5BEAD



9BD0D1

# Square

The Square scheme is like the rectangle color scheme, but the four colors are evenly spaced on the color wheel.



E5BEAD



B4CDB0



9ECEDF



D7BEDB

# Rectangle

The Rectangle color scheme consists of four colors that form a rectangle on the color wheel.



E5BEAD



CDC7A5



9ECEDF



BBC6E7



# Sweetspot

The Sweet Spot groups the original color and five complimentary colors.



E5BEAD



FFF3ED



E5ADD4



807875



000000



808080



# Same Dimension

The Same Dimension uses a secret algorithm to generate beautiful new colors.



E5BEAD



FFCBB5



E5DAAD



736B67



B33600



330F00

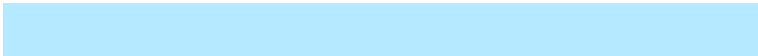


# Inverse Universe

The Inverse Universe completely reimagines the original color for something new.



ADD4E5



B5E9FF



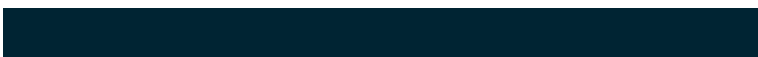
ADB8E5



676F73



007CB3

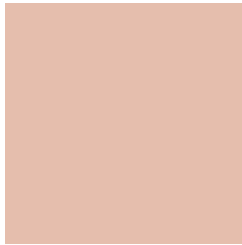


002433



# Previews

## White Background



This preview shows how the Hex color E5BEAD looks on a white background.

## Color Contrast Check

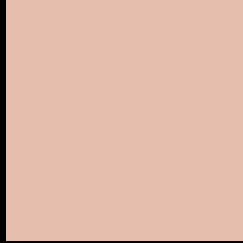
Large Text (above 18pt) WCAG AA × Fail

Any Text WCAG AA × Fail

Large Text (above 18pt) WCAG AAA × Fail

Any Text WCAG AAA × Fail

# Black Background



This preview shows how the Hex color E5BEAD looks on a black background.

## Color Contrast Check

Large Text (above 18pt) WCAG AA ✓ Pass

Any Text WCAG AA ✓ Pass

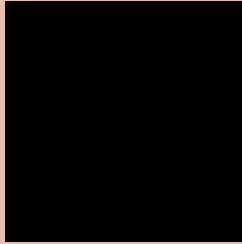
Large Text (above 18pt) WCAG AAA ✓ Pass

Any Text WCAG AAA ✓ Pass

If you want to check with other color combinations, try the [Color Contrast Checker](#).



## Hex E5BEAD Background



This preview shows how black text looks on a background with the Hex color E5BEAD.

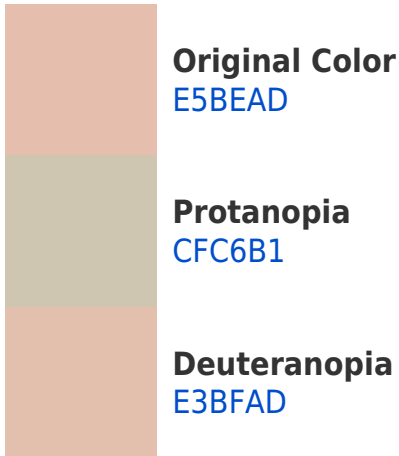



This preview shows how white text looks on a background with the Hex color E5BEAD.

# Color Blindness Simulation

Color vision deficiency is a very complex topic, and I could not describe the different causes any better than Wikipedia does, so if you want to learn more, you should check out their [article about color blindness](#).

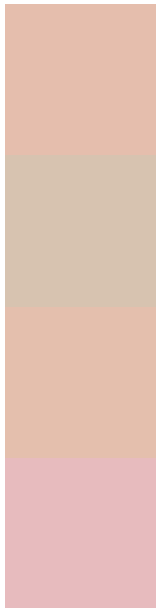
## Dichromacy





**Tritanopia**  
E8BAC8

# Trichromacy



**Original Color**  
E5BEAD

**Protanomaly**  
D7C3B0

**Deuteranomaly**  
E4BFAD

**Tritanomaly**  
E7BBBE

# Monochromacy



**Original Color**  
E5BEAD

**Achromatopsia**  
C8C8C8

**Achromatomaly**  
D3C4BE

# CSS Examples

## Text

The CSS property to change the color of the text to Hex E5BEAD is called "color". The color property can be set on classes, ids or directly on the HTML element.

This example shows how text in the color #E5BEAD looks like.

```
.text, #text, p{  
    color:#E5BEAD  
}
```

If you want to add a text shadow in that color use the text-shadow property, you can generate a text shadow directly with our [CSS Text Shadow Generator](#).

Here you see how black text with a 4 pixel #E5BEAD colored shadow looks like.

```
.shadow{ text-shadow: 4px 4px 2px #E5BEAD }  
}
```

## Border

The CSS property to change the border of an element to Hex E5BEAD is called "border". The border property can be set on classes, ids or directly on the HTML element.

This example shows the color as border, it can be applied via the CSS property "border" or "border-color".

```
.border, #border, table{ border:4px solid #E5BEAD }  
}
```

If only the border color should be changed use the property `border-color`.

```
.border{ border-color:#E5BEAD }
```

If you want to add a box shadow in that color use:

Here you see how a box with a 4 pixel #E5BEAD colored shadow looks like.

```
.boxshadow{ -moz-box-shadow:4px 4px 4px  
4px #E5BEAD; -webkit-box-shadow:4px 4px  
4px 4px #E5BEAD; box-shadow:4px 4px 4px  
4px #E5BEAD }
```

# Background

The CSS property to change the background color of an element to Hex E5BEAD is called "background". The background property can be set on classes, ids or directly on the HTML element.

```
.background, #background, body{  
background:#E5BEAD }
```

If only the background color should be changed can be used:

```
.background{ background-color:#E5BEAD }
```

This example shows the color as background, it is applied via the CSS property "background".

To optimize and compress your CSS code, you can use our [online CSS compressor and optimizer](#) based on csstidy. If you want to create a linear or radial gradient as background or border, check our [CSS Gradient Generator](#).



Hey! You found this booklet interesting? Support Converting Colors with the new Membership Option!

The pro membership hides all ads, plus gives you double the colors in the color bucket, and more awesome pro features!

**[Learn more, Memberships starting at \\$2.50/m!](#)**

**Follow me  
on Twitter!**

@ConvertingColor