

Converting Colors

Hex(E5BFAB)

Have a look what the booklet for
Hex(E5BFAB) contains.

Hex(E5BFAB)	3
<i>Conversions</i>	4
<i>Details</i>	6
<i>Harmonies</i>	11
<i>Previews</i>	23
<i>Color Blindness Simulation</i>	26
<i>CSS Examples</i>	29

Color

Hex(E5BFAB)

Conversions

Conversions Part 1

Format	Color
Hex	E5BFAB
RGB	229, 191, 171
RGB Percent	90%, 75%, 67%
CMY	0.1020, 0.2510, 0.3294
CMYK	0.00, 0.17, 0.25, 0.10
HSL	21°, 53%, 78%
HSV	21°, 25%, 90%
XYZ	58.2946, 56.8599, 46.4307
YIQ	200.0820, 29.0680, 1.8360

Conversions

Conversions Part 2

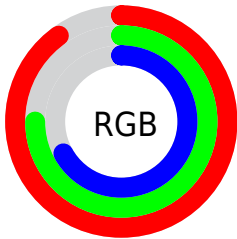
Format	Color
R _Y B	229, 202, 171
Decimal	15056811
CIE Lab	80.10, 10.59, 15.15
CIE LCh	80, 18.486, 55.057
Yxy	56.8599, 0.3608, 0.3519
Android (android.graphics.Color)	4293246891 (0xFFE5BFAB)
YUV	200.0820, -14.3374, 25.3611
Hunter-Lab	75.4055, 6.0354, 16.2762

Details

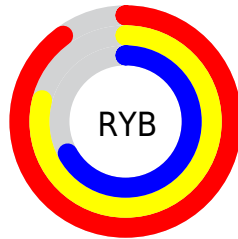
The Hex color **E5BFAB** is a light color, and the websafe version is hex **FFCCCC**. A complement of this color would be **ABD1E5**, and the grayscale version is **C8C8C8**.

A 20% lighter version of the original color is **FFF7E2**, and **AD8A77** is the 20% darker color. If you saturate the color by 10%, you get **E5B094**, and if you desaturate by 10%, it is **E5CEC2**.

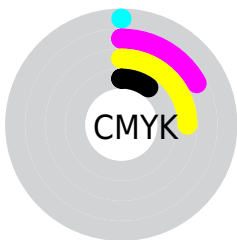
Distribution



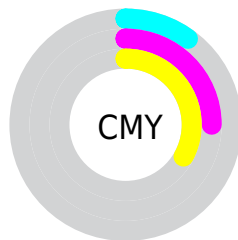
- Red (90%)
- Green (75%)
- Blue (67%)



- Red (90%)
- Yellow (79%)
- Blue (67%)



- Cyan (0%)
- Magenta (17%)
- Yellow (25%)
- Black (10%)



- Cyan (10%)
- Magenta (25%)
- Yellow (33%)

Brightness & Saturation Gradients

These gradients show how the Hex color E5BFAB changes by changing the brightness by 10 percent. The first figure shows a shift by +10% for each color and the second figure -10%.

Similar to the brightness gradients but the following saturation gradients show a change of the Hex color E5BFAB by changing the saturation by 10% instead.

 E5BFAB

FFFFFF

 FFF7E2

 E5BFAB

 C9A490

 AD8A77

 92705E

 775846

 5E4030

 452A1B

 2E1500

 170000

 000000

 E5BFAB

 E5BFAB

 E5B094

 E5CEC2

 E5A17D

 E5DDD9

 E59266

 E5ECF0

 E5834F

 E5FBFF

 E57438

 E5FFFF

 E56522

 E5560B

 E54F00

Harmonies

Analogous

The Analogous color harmony consists of three colors that are next to each other on the color wheel.



EBBBB9



E5BFAB



D7C4A5

Triad

The Triadic color harmony groups three colors that are evenly spaced from another and form a triangle on the color wheel.



E5BFAB



A1D1C3



C6C3E6

Complementary

The Complementary color scheme is a pair of colors which are on the opposite of each other on the color wheel.



E5BFAB



ABD1E5

Split Complementary

Split-complementary colors differ from the complementary color scheme. The scheme consists of three colors, the original color and two neighbors of the complement color.



B0C9E9



E5BFAB



99D0D5

Square

The Square scheme is like the rectangle color scheme, but the four colors are evenly spaced on the color wheel.



E5BFAB



B1CEB2



9FCEE2



DBBEDB

Rectangle

The Rectangle color scheme consists of four colors that form a rectangle on the color wheel.



E5BFAB



CBC8A5



9FCEE2



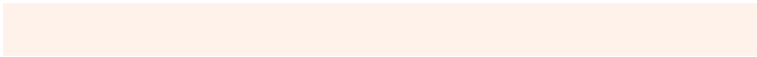
BFC5E8

Sweetspot

The Sweet Spot groups the original color and five complimentary colors.



E5BFAB



FFF2EB



E5ABD2



807773



000000



808080

Same Dimension

The Same Dimension uses a secret algorithm to generate beautiful new colors.



E5BFAB



FFCDB3



E5DBAB



736B67



B33E00



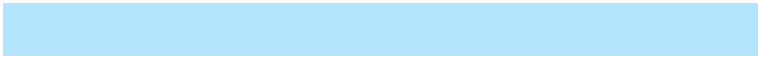
331200

Inverse Universe

The Inverse Universe completely reimagines the original color for something new.



ABD1E5



B3E5FF



ABB5E5



676F73



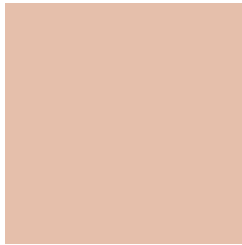
0075B3



002133

Previews

White Background



This preview shows how the Hex color E5BFAB looks on a white background.

Color Contrast Check

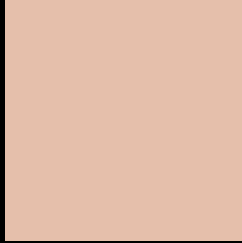
Large Text (above 18pt) WCAG AA × Fail

Any Text WCAG AA × Fail

Large Text (above 18pt) WCAG AAA × Fail

Any Text WCAG AAA × Fail

Black Background



This preview shows how the Hex color E5BFAB looks on a black background.

Color Contrast Check

Large Text (above 18pt) WCAG AA ✓ Pass

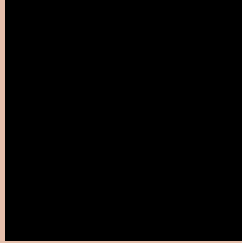
Any Text WCAG AA ✓ Pass

Large Text (above 18pt) WCAG AAA ✓ Pass

Any Text WCAG AAA ✓ Pass

If you want to check with other color combinations, try the [Color Contrast Checker](#).

Hex E5BFAB Background



This preview shows how black text looks on a background with the Hex color E5BFAB.

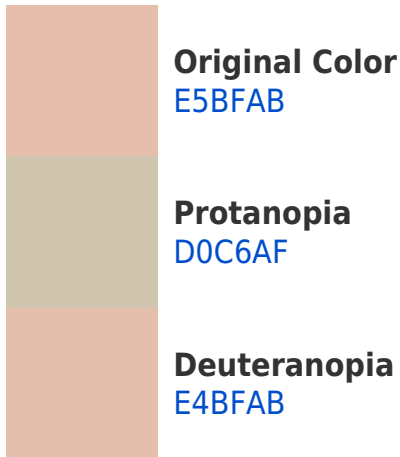


This preview shows how white text looks on a background with the Hex color E5BFAB.

Color Blindness Simulation

Color vision deficiency is a very complex topic, and I could not describe the different causes any better than Wikipedia does, so if you want to learn more, you should check out their [article about color blindness](#).

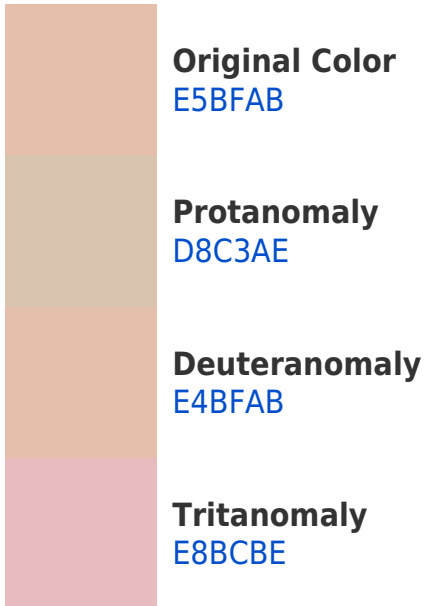
Dichromacy



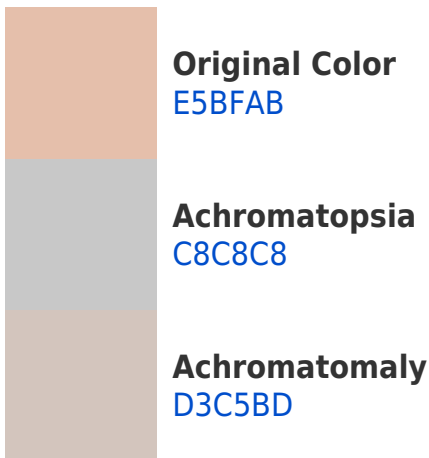


Tritanopia
E9BBC9

Trichromacy



Monochromacy



CSS Examples

Text

The CSS property to change the color of the text to Hex E5BFAB is called "color". The color property can be set on classes, ids or directly on the HTML element.

This example shows how text in the color #E5BFAB looks like.

```
.text, #text, p{  
    color:#E5BFAB  
}
```

If you want to add a text shadow in that color use the text-shadow property, you can generate a text shadow directly with our [CSS Text Shadow Generator](#).

Here you see how black text with a 4 pixel #E5BFAB colored shadow looks like.

```
.shadow{ text-shadow: 4px 4px 2px #E5BFAB  
}
```

Border

The CSS property to change the border of an element to Hex E5BFAB is called "border". The border property can be set on classes, ids or directly on the HTML element.

This example shows the color as border, it can be applied via the CSS property "border" or "border-color".

```
.border, #border, table{ border:4px solid  
#E5BFAB }
```

If only the border color should be changed use the property `border-color`.

```
.border{ border-color:#E5BFAB }
```

If you want to add a box shadow in that color use:

Here you see how a box with a 4 pixel #E5BFAB colored shadow looks like.

```
.boxshadow{ -moz-box-shadow:4px 4px 4px  
4px #E5BFAB; -webkit-box-shadow:4px 4px  
4px 4px #E5BFAB; box-shadow:4px 4px 4px  
4px #E5BFAB }
```

Background

The CSS property to change the background color of an element to Hex E5BFAB is called "background". The background property can be set on classes, ids or directly on the HTML element.

```
.background, #background, body{  
background:#E5BFAB }
```

If only the background color should be changed can be used:

```
.background{ background-color:#E5BFAB }
```

This example shows the color as background, it is applied via the CSS property "background".

To optimize and compress your CSS code, you can use our [online CSS compressor and optimizer](#) based on csstidy. If you want to create a linear or radial gradient as background or border, check our [CSS Gradient Generator](#).

Hey! You found this booklet interesting? Support Converting Colors with the new Membership Option!

The pro membership hides all ads, plus gives you double the colors in the color bucket, and more awesome pro features!

[Learn more, Memberships starting at \\$2.50/m!](#)

**Follow me
on Twitter!**

@ConvertingColor