

# Converting Colors

Hex(E5BFB6)

Have a look what the booklet for  
Hex(E5BFB6) contains.

<b>Hex(E5BFB6)</b> .....	3
<i><b>Conversions</b></i> .....	4
<i><b>Details</b></i> .....	6
<i><b>Harmonies</b></i> .....	11
<i><b>Previews</b></i> .....	23
<i><b>Color Blindness Simulation</b></i> .....	26
<i><b>CSS Examples</b></i> .....	29

# **Color**

**Hex(E5BFB6)**

# Conversions

## Conversions Part 1

Format	Color
Hex	E5BFB6
RGB	229, 191, 182
RGB Percent	90%, 75%, 71%
CMY	0.1020, 0.2510, 0.2863
CMYK	0.00, 0.17, 0.21, 0.10
HSL	11°, 47%, 81%
HSV	11°, 21%, 90%
XYZ	59.3874, 57.2970, 52.1853
YIQ	201.3360, 25.5370, 5.2570

# Conversions

## Conversions Part 2

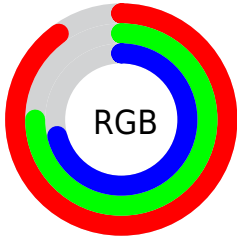
Format	Color
R <sub>Y</sub> B	229, 193, 182
Decimal	15056822
CIE Lab	80.35, 12.17, 9.60
CIE LCh	80, 15.497, 38.268
Yxy	57.2970, 0.3517, 0.3393
Android (android.graphics.Color)	4293246902 (0xFFE5BFB6)
YUV	201.3360, -9.5326, 24.2613
Hunter-Lab	75.6948, 7.5788, 12.1108

# Details

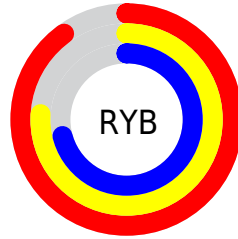
The Hex color **E5BFB6** is a light color, and the websafe version is hex **FFCCCC**. A complement of this color would be **B6DCE5**, and the grayscale version is **C9C9C9**.

A 20% lighter version of the original color is **FFF7EE**, and **AD8A81** is the 20% darker color. If you saturate the color by 10%, you get **E5AC9F**, and if you desaturate by 10%, it is **E5D2CD**.

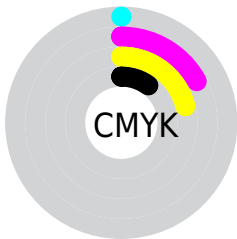
# Distribution



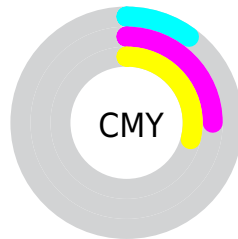
- Red (90%)
- Green (75%)
- Blue (71%)



- Red (90%)
- Yellow (76%)
- Blue (71%)



- Cyan (0%)
- Magenta (17%)
- Yellow (21%)
- Black (10%)



- Cyan (10%)
- Magenta (25%)
- Yellow (29%)

# Brightness & Saturation Gradients

These gradients show how the Hex color E5BFB6 changes by changing the brightness by 10 percent. The first figure shows a shift by +10% for each color and the second figure -10%.

Similar to the brightness gradients but the following saturation gradients show a change of the Hex color E5BFB6 by changing the saturation by 10% instead.



 E5BFB6

 E5BFB6

FFFFFF

 C9A49B

 FFF7EE

 AD8A81

 927068

 785850

 5E4039

 462A24

 2F150E

 1A0000

 000000

 E5BFB6

 E5BFB6

 E5AC9F

 E5D2CD

 E59A88

 E5E4E4

 E58771

 E5F7FB

 E5755A

 E5FFFF

 E56244

 E5502D

 E53D16

 E52C00

# Harmonies

## Analogous

The Analogous color harmony consists of three colors that are next to each other on the color wheel.



E6BDC4



E5BFB6



DDC3AD

# Triad

The Triadic color harmony groups three colors that are evenly spaced from another and form a triangle on the color wheel.



E5BFB6



AFCFBC



BDC7E4

# Complementary

The Complementary color scheme is a pair of colors which are on the opposite of each other on the color wheel.



E5BFB6



B6DCE5

# Split Complementary

Split-complementary colors differ from the complementary color scheme. The scheme consists of three colors, the original color and two neighbors of the complement color.



ACCCE2



E5BFB6



A4D0CB

# Square

The Square scheme is like the rectangle color scheme, but the four colors are evenly spaced on the color wheel.



E5BFB6



BECCB0



A3CFD9



CFC2DE

# Rectangle

The Rectangle color scheme consists of four colors that form a rectangle on the color wheel.



E5BFB6



D4C6AB



A3CFD9



B7C9E4



# Sweetspot

The Sweet Spot groups the original color and five complimentary colors.



E5BFB6



FFF3F0



E5B6DC



807877



000000



808080



# Same Dimension

The Same Dimension uses a secret algorithm to generate beautiful new colors.



E5BFB6



FFCBBF



E5D6B6



736967



B32200



330A00

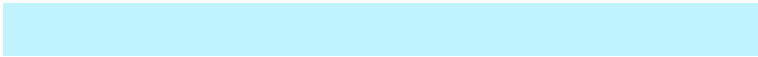


# Inverse Universe

The Inverse Universe completely reimagines the original color for something new.



B6DCE5



BFF3FF



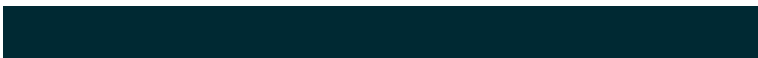
B6C5E5



677173



0090B3

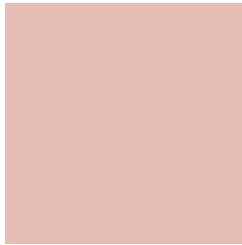


002933



# Previews

## White Background



This preview shows how the Hex color E5BFB6 looks on a white background.

## Color Contrast Check

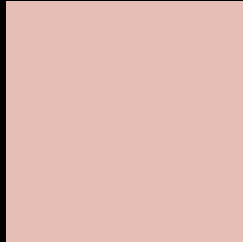
Large Text (above 18pt) WCAG AA × Fail

Any Text WCAG AA × Fail

Large Text (above 18pt) WCAG AAA × Fail

Any Text WCAG AAA × Fail

# Black Background



This preview shows how the Hex color E5BFB6 looks on a black background.

## Color Contrast Check

Large Text (above 18pt) WCAG AA ✓ Pass

Any Text WCAG AA ✓ Pass

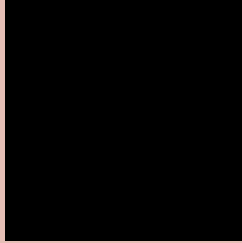
Large Text (above 18pt) WCAG AAA ✓ Pass

Any Text WCAG AAA ✓ Pass

If you want to check with other color combinations, try the [Color Contrast Checker](#).



## Hex E5BFB6 Background



This preview shows how black text looks on a background with the Hex color E5BFB6.

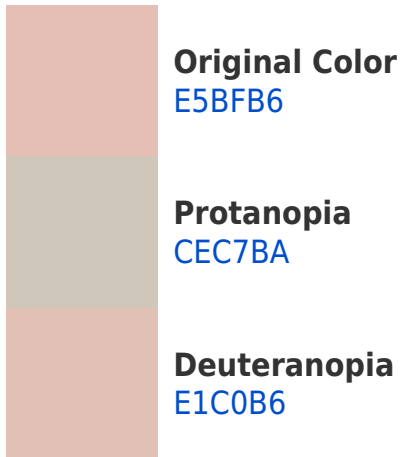


This preview shows how white text looks on a background with the Hex color E5BFB6.

# Color Blindness Simulation

Color vision deficiency is a very complex topic, and I could not describe the different causes any better than Wikipedia does, so if you want to learn more, you should check out their [article about color blindness](#).

## Dichromacy



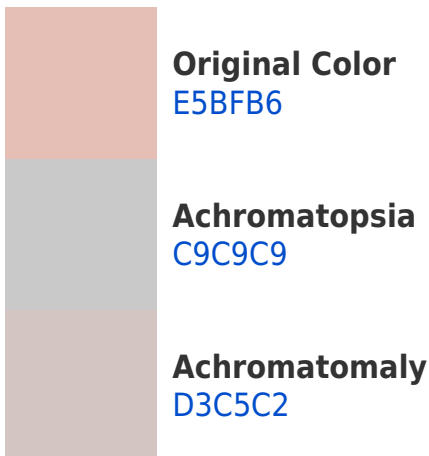


**Tritanopia**  
E7BCCB

# Trichromacy



# Monochromacy



# CSS Examples

## Text

The CSS property to change the color of the text to Hex E5BFB6 is called "color". The color property can be set on classes, ids or directly on the HTML element.

This example shows how text in the color #E5BFB6 looks like.

```
.text, #text, p{  
    color:#E5BFB6  
}
```

If you want to add a text shadow in that color use the text-shadow property, you can generate a text shadow directly with our [CSS Text Shadow Generator](#).

Here you see how black text with a 4 pixel #E5BFB6 colored shadow looks like.

```
.shadow{ text-shadow: 4px 4px 2px #E5BFB6
}
```

## Border

The CSS property to change the border of an element to Hex E5BFB6 is called "border". The border property can be set on classes, ids or directly on the HTML element.

This example shows the color as border, it can be applied via the CSS property "border" or "border-color".

```
.border, #border, table{ border:4px solid
#E5BFB6 }
```

If only the border color should be changed use the property `border-color`.

```
.border{ border-color:#E5BFB6 }
```

If you want to add a box shadow in that color use:

Here you see how a box with a 4 pixel #E5BFB6 colored shadow looks like.

```
.boxshadow{ -moz-box-shadow:4px 4px 4px  
4px #E5BFB6; -webkit-box-shadow:4px 4px  
4px 4px #E5BFB6; box-shadow:4px 4px 4px  
4px #E5BFB6 }
```

# Background

The CSS property to change the background color of an element to Hex E5BFB6 is called "background". The background property can be set on classes, ids or directly on the HTML element.

```
.background, #background, body{  
background:#E5BFB6 }
```

If only the background color should be changed can be used:

```
.background{ background-color:#E5BFB6 }
```

This example shows the color as background, it is applied via the CSS property "background".

To optimize and compress your CSS code, you can use our [online CSS compressor and optimizer](#) based on csstidy. If you want to create a linear or radial gradient as background or border, check our [CSS Gradient Generator](#).



Hey! You found this booklet interesting? Support Converting Colors with the new Membership Option!

The pro membership hides all ads, plus gives you double the colors in the color bucket, and more awesome pro features!

**[Learn more, Memberships starting at \\$2.50/m!](#)**

**Follow me  
on Twitter!**

@ConvertingColor