

# Converting Colors

Hex(E5BFBA)

Have a look what the booklet for  
Hex(E5BFBA) contains.

<b>Hex(E5BFBA)</b> .....	3
<i><b>Conversions</b></i> .....	4
<i><b>Details</b></i> .....	6
<i><b>Harmonies</b></i> .....	11
<i><b>Previews</b></i> .....	23
<i><b>Color Blindness Simulation</b></i> .....	26
<i><b>CSS Examples</b></i> .....	29

# **Color**

**Hex(E5BFBA)**

# Conversions

## Conversions Part 1

Format	Color
Hex	E5BFBA
RGB	229, 191, 186
RGB Percent	90%, 75%, 73%
CMY	0.1020, 0.2510, 0.2706
CMYK	0.00, 0.17, 0.19, 0.10
HSL	7°, 45%, 81%
HSV	7°, 19%, 90%
XYZ	59.8068, 57.4648, 54.3940
YIQ	201.7920, 24.2530, 6.5010

# Conversions

## Conversions Part 2

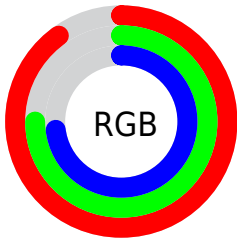
Format	Color
R <sub>Y</sub> B	229, 192, 186
Decimal	15056826
CIE Lab	80.44, 12.77, 7.58
CIE LCh	80, 14.848, 30.708
Yxy	57.4648, 0.3484, 0.3347
Android (android.graphics.Color)	4293246906 (0xFFE5BFBA)
YUV	201.7920, -7.7855, 23.8614
Hunter-Lab	75.8055, 8.1680, 10.5205

# Details

The Hex color **E5BFBA** is a light color, and the websafe version is hex **FFCCCC**. A complement of this color would be **BAE0E5**, and the grayscale version is **CACACA**.

A 20% lighter version of the original color is **FFF7F2**, and **AD8A85** is the 20% darker color. If you saturate the color by 10%, you get **E5ABA3**, and if you desaturate by 10%, it is **E5D3D1**.

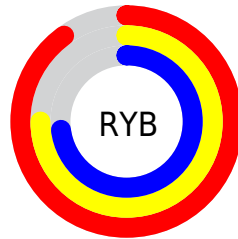
# Distribution



Red (90%)

Green (75%)

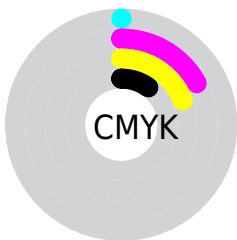
Blue (73%)



Red (90%)

Yellow (75%)

Blue (73%)

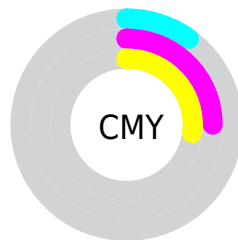


Cyan (0%)

Magenta (17%)

Yellow (19%)

Black (10%)



Cyan (10%)

Magenta (25%)

Yellow (27%)

# Brightness & Saturation Gradients

These gradients show how the Hex color E5BFBA changes by changing the brightness by 10 percent. The first figure shows a shift by +10% for each color and the second figure -10%.

Similar to the brightness gradients but the following saturation gradients show a change of the Hex color E5BFBA by changing the saturation by 10% instead.



 E5BFBA

FFFFFF

 FFF7F2

 E5BFBA

 C9A49F

 AD8A85

 92706C

 785853

 5F403C

 462A27

 2F1512

 1B0000

 000000

 E5BFBA

 E5BFBA

 E5ABA3

 E5D3D1

 E5978C

 E5E7E8

 E58275

 E5FCFF

 E56E5E

 E5FFFF

 E55A47

 E54631

 E5311A

 E51D03

 E51B00

# Harmonies

## Analogous

The Analogous color harmony consists of three colors that are next to each other on the color wheel.



E4BEC8



E5BFBA



DFC2B0

# Triad

The Triadic color harmony groups three colors that are evenly spaced from another and form a triangle on the color wheel.



E5BFBA



B3CEBA



B9C9E3

# Complementary

The Complementary color scheme is a pair of colors which are on the opposite of each other on the color wheel.



E5BFBA



BAE0E5

# Split Complementary

Split-complementary colors differ from the complementary color scheme. The scheme consists of three colors, the original color and two neighbors of the complement color.



ABCDDF



E5BFBA



A8D0C7

# Square

The Square scheme is like the rectangle color scheme, but the four colors are evenly spaced on the color wheel.



E5BFBA



C3CBB0



A4CFD5



CBC4DF

# Rectangle

The Rectangle color scheme consists of four colors that form a rectangle on the color wheel.



E5BFBA



D7C5AC



A4CFD5



B4CAE3

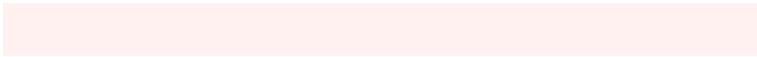


# Sweetspot

The Sweet Spot groups the original color and five complimentary colors.



E5BFBA



FFF1F0



E5BAE1



807877



000000



808080



# Same Dimension

The Same Dimension uses a secret algorithm to generate beautiful new colors.



E5BFBA



FFCBC4



E5D4BA



736967



B31500



330600



# Inverse Universe

The Inverse Universe completely reimagines the original color for something new.



BAE0E5



C4F8FF



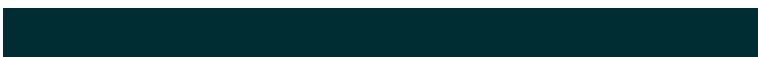
BACBE5



677173



009EB3

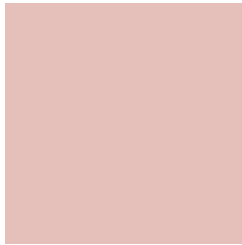


002D33



# Previews

## White Background



This preview shows how the Hex color E5BFBA looks on a white background.

## Color Contrast Check

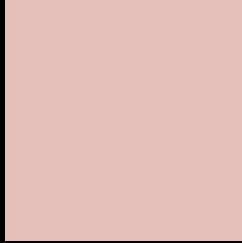
Large Text (above 18pt) WCAG AA × Fail

Any Text WCAG AA × Fail

Large Text (above 18pt) WCAG AAA × Fail

Any Text WCAG AAA × Fail

# Black Background



This preview shows how the Hex color E5BFBA looks on a black background.

## Color Contrast Check

Large Text (above 18pt) WCAG AA ✓ Pass

Any Text WCAG AA ✓ Pass

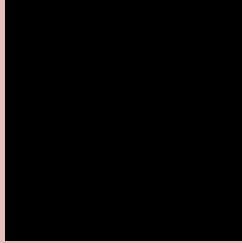
Large Text (above 18pt) WCAG AAA ✓ Pass

Any Text WCAG AAA ✓ Pass

If you want to check with other color combinations, try the [Color Contrast Checker](#).



## Hex E5BFBA Background



This preview shows how black text looks on a background with the Hex color E5BFBA.

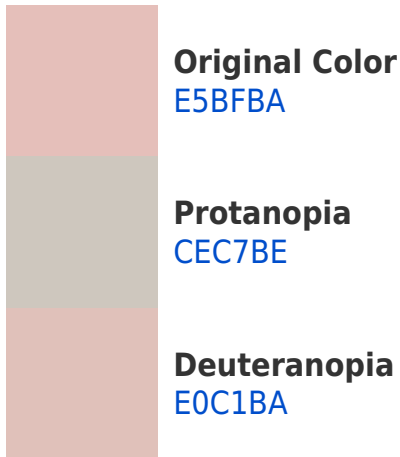


This preview shows how white text looks on a background with the Hex color E5BFBA.

# Color Blindness Simulation

Color vision deficiency is a very complex topic, and I could not describe the different causes any better than Wikipedia does, so if you want to learn more, you should check out their [article about color blindness](#).

## Dichromacy





**Tritanopia**  
E7BCCB

# Trichromacy



**Original Color**  
E5BFBA

**Protanomaly**  
D6C4BD

**Deuteranomaly**  
E2C0BA

**Tritanomaly**  
E6BDC5

# Monochromacy



**Original Color**  
E5BFBA

**Achromatopsia**  
CACACA

**Achromatomaly**  
D4C6C4

# CSS Examples

## Text

The CSS property to change the color of the text to Hex E5BFBA is called "color". The color property can be set on classes, ids or directly on the HTML element.

This example shows how text in the color #E5BFBA looks like.

```
.text, #text, p{  
    color:#E5BFBA  
}
```

If you want to add a text shadow in that color use the text-shadow property, you can generate a text shadow directly with our [CSS Text Shadow Generator](#).

Here you see how black text with a 4 pixel #E5BFBA colored shadow looks like.

```
.shadow{ text-shadow: 4px 4px 2px #E5BFBA
}
```

## Border

The CSS property to change the border of an element to Hex E5BFBA is called "border". The border property can be set on classes, ids or directly on the HTML element.

This example shows the color as border, it can be applied via the CSS property "border" or "border-color".

```
.border, #border, table{ border:4px solid
#E5BFBA }
```

If only the border color should be changed use the property `border-color`.

```
.border{ border-color:#E5BFBA }
```

If you want to add a box shadow in that color use:

Here you see how a box with a 4 pixel #E5BFBA colored shadow looks like.

```
.boxshadow{ -moz-box-shadow:4px 4px 4px  
4px #E5BFBA; -webkit-box-shadow:4px 4px  
4px 4px #E5BFBA; box-shadow:4px 4px 4px  
4px #E5BFBA }
```

# Background

The CSS property to change the background color of an element to Hex E5BFBA is called "background". The background property can be set on classes, ids or directly on the HTML element.

```
.background, #background, body{  
background:#E5BFBA }
```

If only the background color should be changed can be used:

```
.background{ background-color:#E5BFBA }
```

This example shows the color as background, it is applied via the CSS property "background".

To optimize and compress your CSS code, you can use our [online CSS compressor and optimizer](#) based on csstidy. If you want to create a linear or radial gradient as background or border, check our [CSS Gradient Generator](#).



Hey! You found this booklet interesting? Support Converting Colors with the new Membership Option!

The pro membership hides all ads, plus gives you double the colors in the color bucket, and more awesome pro features!

**[Learn more, Memberships starting at \\$2.50/m!](#)**

**Follow me  
on Twitter!**

@ConvertingColor