

# Converting Colors

Hex(E5BFBD)

Have a look what the booklet for  
Hex(E5BFBD) contains.

<b>Hex(E5BFBD)</b> .....	3
<i><b>Conversions</b></i> .....	4
<i><b>Details</b></i> .....	6
<i><b>Harmonies</b></i> .....	11
<i><b>Previews</b></i> .....	23
<i><b>Color Blindness Simulation</b></i> .....	26
<i><b>CSS Examples</b></i> .....	29

# **Color**

**Hex(E5BFBD)**

# Conversions

## Conversions Part 1

Format	Color
Hex	E5BFBD
RGB	229, 191, 189
RGB Percent	90%, 75%, 74%
CMY	0.1020, 0.2510, 0.2588
CMYK	0.00, 0.17, 0.17, 0.10
HSL	3°, 43%, 82%
HSV	3°, 17%, 90%
XYZ	60.1292, 57.5937, 56.0917
YIQ	202.1340, 23.2900, 7.4340

# Conversions

## Conversions Part 2

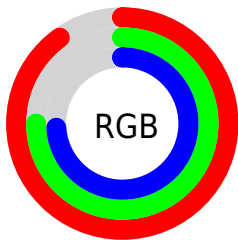
Format	Color
R <sub>Y</sub> B	229, 191, 189
Decimal	15056829
CIE Lab	80.51, 13.22, 6.07
CIE LCh	81, 14.552, 24.665
Yxy	57.5937, 0.3459, 0.3314
Android (android.graphics.Color)	4293246909 (0xFFE5BFBD)
YUV	202.1340, -6.4751, 23.5615
Hunter-Lab	75.8905, 8.6198, 9.3014

# Details

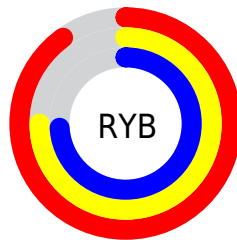
The Hex color **E5BFBD** is a light color, and the websafe version is hex **FFCCCC**. A complement of this color would be **BDE3E5**, and the grayscale version is **CACACA**.

A 20% lighter version of the original color is **FFF7F5**, and **AD8A88** is the 20% darker color. If you saturate the color by 10%, you get **E5A9A6**, and if you desaturate by 10%, it is **E5D5D4**.

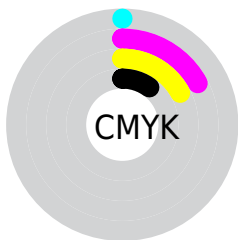
# Distribution



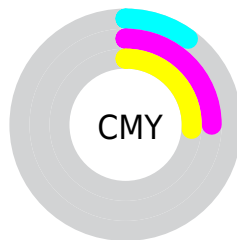
- Red (90%)
- Green (75%)
- Blue (74%)



- Red (90%)
- Yellow (75%)
- Blue (74%)



- Cyan (0%)
- Magenta (17%)
- Yellow (17%)
- Black (10%)



- Cyan (10%)
- Magenta (25%)
- Yellow (26%)

# Brightness & Saturation Gradients

These gradients show how the Hex color E5BFBD changes by changing the brightness by 10 percent. The first figure shows a shift by +10% for each color and the second figure -10%.

Similar to the brightness gradients but the following saturation gradients show a change of the Hex color E5BFBD by changing the saturation by 10% instead.



 E5BFBD

 E5BFBD

FFFFFF

 C9A4A2

 FFF7F5

 AD8A88

 92706E

 785756

 5F403F

 462A29

 2F1515

 1C0000

 000000

 E5BFBD

 E5BFBD

 E5A9A6

 E5D5D4

 E5938F

 E5EBEB

 E57E78

 E5FFFF

 E56861

 E5524B

 E53C34

 E5271D

 E51106

 E50B00

# Harmonies

## Analogous

The Analogous color harmony consists of three colors that are next to each other on the color wheel.



E2BFCB



E5BFBD



E0C2B2

# Triad

The Triadic color harmony groups three colors that are evenly spaced from another and form a triangle on the color wheel.



E5BFBD



B7CEB8



B6CAE2

# Complementary

The Complementary color scheme is a pair of colors which are on the opposite of each other on the color wheel.



E5BFBD



BDE3E5

# Split Complementary

Split-complementary colors differ from the complementary color scheme. The scheme consists of three colors, the original color and two neighbors of the complement color.



A9CDDD



E5BFBD



AAD0C5

# Square

The Square scheme is like the rectangle color scheme, but the four colors are evenly spaced on the color wheel.



E5BFBD



C7CAAF



A5D0D3



C7C5E0

# Rectangle

The Rectangle color scheme consists of four colors that form a rectangle on the color wheel.



E5BFBD



DAC4AE



A5D0D3



B1CBE2



# Sweetspot

The Sweet Spot groups the original color and five complimentary colors.



E5BFBD



FFF3F2



E5BDE3



807878



000000



808080



# Same Dimension

The Same Dimension uses a secret algorithm to generate beautiful new colors.



E5BFBD



FFCCC9



E5D2BD



736867



B30900



330300



# Inverse Universe

The Inverse Universe completely reimagines the original color for something new.



BDE3E5



C9FCFF



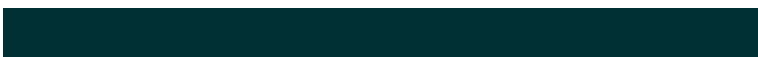
BDCFE5



677273



00AAB3

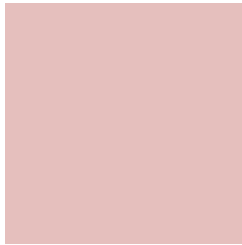


003033



# Previews

## White Background



This preview shows how the Hex color E5BFBD looks on a white background.

## Color Contrast Check

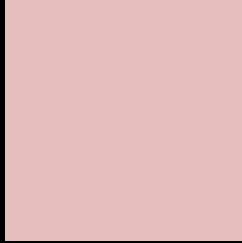
Large Text (above 18pt) WCAG AA × Fail

Any Text WCAG AA × Fail

Large Text (above 18pt) WCAG AAA × Fail

Any Text WCAG AAA × Fail

# Black Background



This preview shows how the Hex color E5BFBD looks on a black background.

## Color Contrast Check

Large Text (above 18pt) WCAG AA ✓ Pass

Any Text WCAG AA ✓ Pass

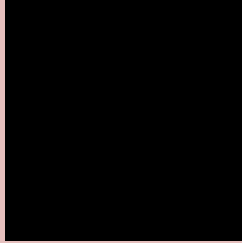
Large Text (above 18pt) WCAG AAA ✓ Pass

Any Text WCAG AAA ✓ Pass

If you want to check with other color combinations, try the [Color Contrast Checker](#).



## Hex E5BFBD Background



This preview shows how black text looks on a background with the Hex color E5BFBD.

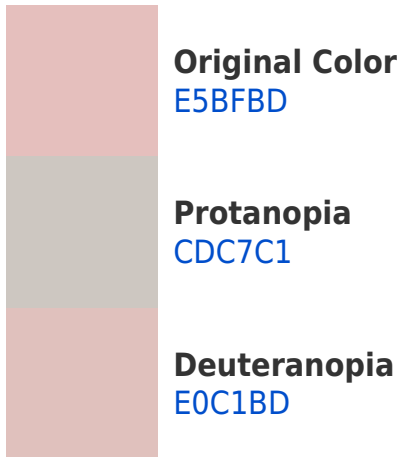


This preview shows how white text looks on a background with the Hex color E5BFBD.

# Color Blindness Simulation

Color vision deficiency is a very complex topic, and I could not describe the different causes any better than Wikipedia does, so if you want to learn more, you should check out their [article about color blindness](#).

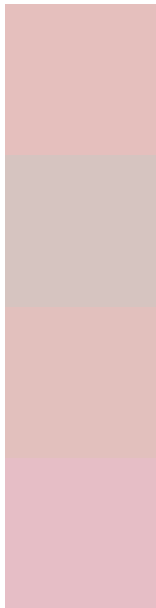
## Dichromacy





**Tritanopia**  
E7BDCB

# Trichromacy



**Original Color**  
E5BFBD

**Protanomaly**  
D6C4C0

**Deuteranomaly**  
E2C0BD

**Tritanomaly**  
E6BEC6

# Monochromacy



**Original Color**  
E5BFBD

**Achromatopsia**  
CACACA

**Achromatomaly**  
D4C6C5

# CSS Examples

## Text

The CSS property to change the color of the text to Hex E5BFBD is called "color". The color property can be set on classes, ids or directly on the HTML element.

This example shows how text in the color #E5BFBD looks like.

```
.text, #text, p{  
    color:#E5BFBD  
}
```

If you want to add a text shadow in that color use the text-shadow property, you can generate a text shadow directly with our [CSS Text Shadow Generator](#).

Here you see how black text with a 4 pixel #E5BFBD colored shadow looks like.

```
.shadow{ text-shadow: 4px 4px 2px #E5BFBD
}
```

## Border

The CSS property to change the border of an element to Hex E5BFBD is called "border". The border property can be set on classes, ids or directly on the HTML element.

This example shows the color as border, it can be applied via the CSS property "border" or "border-color".

```
.border, #border, table{ border:4px solid
#E5BFBD }
```

If only the border color should be changed use the property `border-color`.

```
.border{ border-color:#E5BFBD }
```

If you want to add a box shadow in that color use:

Here you see how a box with a 4 pixel #E5BFBD colored shadow looks like.

```
.boxshadow{ -moz-box-shadow:4px 4px 4px  
4px #E5BFBD; -webkit-box-shadow:4px 4px  
4px 4px #E5BFBD; box-shadow:4px 4px 4px  
4px #E5BFBD }
```

# Background

The CSS property to change the background color of an element to Hex E5BFBD is called "background". The background property can be set on classes, ids or directly on the HTML element.

```
.background, #background, body{  
background:#E5BFBD }
```

If only the background color should be changed can be used:

```
.background{ background-color:#E5BFBD }
```

This example shows the color as background, it is applied via the CSS property "background".

To optimize and compress your CSS code, you can use our [online CSS compressor and optimizer](#) based on csstidy. If you want to create a linear or radial gradient as background or border, check our [CSS Gradient Generator](#).



Hey! You found this booklet interesting? Support Converting Colors with the new Membership Option!

The pro membership hides all ads, plus gives you double the colors in the color bucket, and more awesome pro features!

**[Learn more, Memberships starting at \\$2.50/m!](#)**

**Follow me  
on Twitter!**

@ConvertingColor