

# Converting Colors

Hex(E5C0C0)

Have a look what the booklet for  
Hex(E5C0C0) contains.

<b>Hex(E5C0C0)</b> .....	3
<b><i>Conversions</i></b> .....	4
<b><i>Details</i></b> .....	6
<b><i>Harmonies</i></b> .....	11
<b><i>Previews</i></b> .....	23
<b><i>Color Blindness Simulation</i></b> .....	26
<b><i>CSS Examples</i></b> .....	29

# **Color**

**Hex(E5C0C0)**

# Conversions

## Conversions Part 1

<b>Format</b>	<b>Color</b>
Hex	E5C0C0
RGB	229, 192, 192
RGB Percent	90%, 75%, 75%
CMY	0.1020, 0.2471, 0.2471
CMYK	0.00, 0.16, 0.16, 0.10
HSL	0°, 42%, 83%
HSV	0°, 16%, 90%
XYZ	60.6772, 58.1631, 57.8977
YIQ	203.0630, 22.0520, 7.8440

# Conversions

## Conversions Part 2

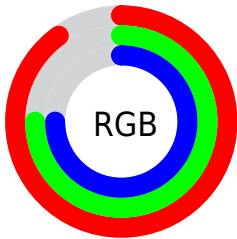
Format	Color
R <sub>Y</sub> B	229, 192, 192
Decimal	15057088
CIE Lab	80.83, 13.16, 4.92
CIE LCh	81, 14.046, 20.489
Yxy	58.1631, 0.3433, 0.3291
Android (android.graphics.Color)	4293247168 (0xFFE5C0C0)
YUV	203.0630, -5.4541, 22.7467
Hunter-Lab	76.2647, 8.5536, 8.3742

# Details

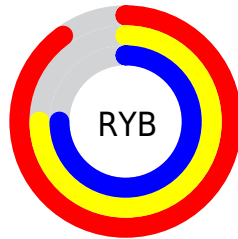
The Hex color **E5C0C0** is a light color, and the websafe version is hex **FFCCCC**. A complement of this color would be **C0E5E5**, and the grayscale version is **CBCBCB**.

A 20% lighter version of the original color is **FFF8F8**, and **AD8A8B** is the 20% darker color. If you saturate the color by 10%, you get **E5A9A9**, and if you desaturate by 10%, it is **E5D7D7**.

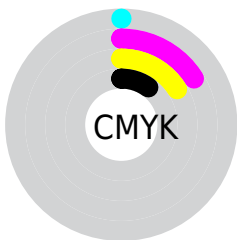
# Distribution



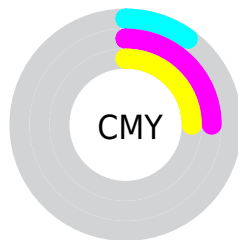
- Red (90%)
- Green (75%)
- Blue (75%)



- Red (90%)
- Yellow (75%)
- Blue (75%)



- Cyan (0%)
- Magenta (16%)
- Yellow (16%)
- Black (10%)



- Cyan (10%)
- Magenta (25%)
- Yellow (25%)

# Brightness & Saturation Gradients

These gradients show how the Hex color E5C0C0 changes by changing the brightness by 10 percent. The first figure shows a shift by +10% for each color and the second figure -10%.

Similar to the brightness gradients but the following saturation gradients show a change of the Hex color E5C0C0 by changing the saturation by 10% instead.



 E5C0C0

FFFFFF

 FFF8F8

 E5C0C0

 C9A5A5

 AD8A8B

 927171

 785859

 5F4141

 472B2B

 2F1617

 1C0000

 000000

 E5C0C0

 E5C0C0

 E5A9A9

 E5D7D7

 E59292

 E5EEEE

 E57B7B

 E5FFFF

 E56464

 E54E4E

 E53737

 E52020

 E50909

 E50000

# Harmonies

## Analogous

The Analogous color harmony consists of three colors that are next to each other on the color wheel.



E1C0CD



E5C0C0



E2C2B5

# Triad

The Triadic color harmony groups three colors that are evenly spaced from another and form a triangle on the color wheel.



E5C0C0



BACEB8



B6CBE2

# Complementary

The Complementary color scheme is a pair of colors which are on the opposite of each other on the color wheel.



E5C0C0



C0E5E5

# Split Complementary

Split-complementary colors differ from the complementary color scheme. The scheme consists of three colors, the original color and two neighbors of the complement color.



AACFDC



E5C0C0



AED0C4

# Square

The Square scheme is like the rectangle color scheme, but the four colors are evenly spaced on the color wheel.



E5C0C0



CACBB0



A7D0D1



C6C7E1

# Rectangle

The Rectangle color scheme consists of four colors that form a rectangle on the color wheel.



E5C0C0



DCC5B0



A7D0D1



B1CCE1

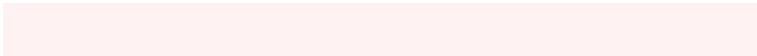


# Sweetspot

The Sweet Spot groups the original color and five complimentary colors.



E5C0C0



FFF2F2



E5C0E5



807878



000000



808080



# Same Dimension

The Same Dimension uses a secret algorithm to generate beautiful new colors.



E5C0C0



FFCFCF



E5D3C0



736767



B30000



330000

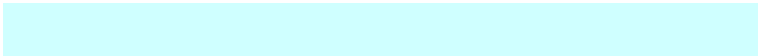


# Inverse Universe

The Inverse Universe completely reimagines the original color for something new.



C0E5E5



CFFFFFF



C0D3E5



677373



00B3B3



003333



# Previews

## White Background



This preview shows how the Hex color E5C0C0 looks on a white background.

## Color Contrast Check

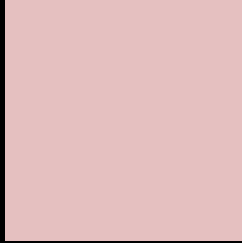
Large Text (above 18pt) WCAG AA × Fail

Any Text WCAG AA × Fail

Large Text (above 18pt) WCAG AAA × Fail

Any Text WCAG AAA × Fail

# Black Background



This preview shows how the Hex color E5C0C0 looks on a black background.

## Color Contrast Check

Large Text (above 18pt) WCAG AA ✓ Pass

Any Text WCAG AA ✓ Pass

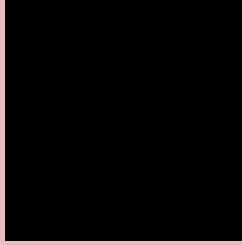
Large Text (above 18pt) WCAG AAA ✓ Pass

Any Text WCAG AAA ✓ Pass

If you want to check with other color combinations, try the [Color Contrast Checker](#).



## Hex E5C0C0 Background



This preview shows how black text looks on a background with the Hex color E5C0C0.

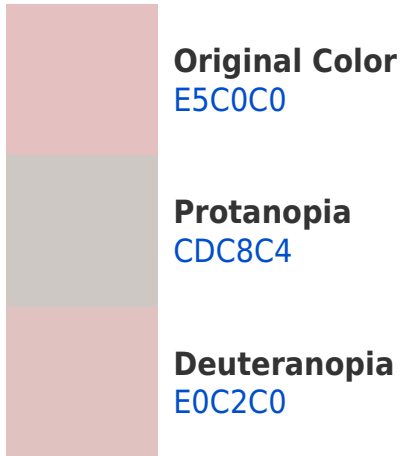


This preview shows how white text looks on a background with the Hex color E5C0C0.

# Color Blindness Simulation

Color vision deficiency is a very complex topic, and I could not describe the different causes any better than Wikipedia does, so if you want to learn more, you should check out their [article about color blindness](#).

## Dichromacy





**Tritanopia**  
E7BECD

# Trichromacy



**Original Color**  
E5C0C0

**Protanomaly**  
D6C5C3

**Deuteranomaly**  
E2C1C0

**Tritanomaly**  
E6BFC8

# Monochromacy



**Original Color**  
E5C0C0

**Achromatopsia**  
CBCBCB

**Achromatomaly**  
D4C7C7

# CSS Examples

## Text

The CSS property to change the color of the text to Hex E5C0C0 is called "color". The color property can be set on classes, ids or directly on the HTML element.

This example shows how text in the color #E5C0C0 looks like.

```
.text, #text, p{  
    color:#E5C0C0  
}
```

If you want to add a text shadow in that color use the text-shadow property, you can generate a text shadow directly with our [CSS Text Shadow Generator](#).

Here you see how black text with a 4 pixel #E5C0C0 colored shadow looks like.

```
.shadow{ text-shadow: 4px 4px 2px #E5C0C0
}
```

## Border

The CSS property to change the border of an element to Hex E5C0C0 is called "border". The border property can be set on classes, ids or directly on the HTML element.

This example shows the color as border, it can be applied via the CSS property "border" or "border-color".

```
.border, #border, table{ border:4px solid
#E5C0C0 }
```

If only the border color should be changed use the property `border-color`.

```
.border{ border-color:#E5C0C0 }
```

If you want to add a box shadow in that color use:

Here you see how a box with a 4 pixel #E5C0C0 colored shadow looks like.

```
.boxshadow{ -moz-box-shadow:4px 4px 4px  
4px #E5C0C0; -webkit-box-shadow:4px 4px  
4px 4px #E5C0C0; box-shadow:4px 4px 4px  
4px #E5C0C0 }
```

# Background

The CSS property to change the background color of an element to Hex E5C0C0 is called "background". The background property can be set on classes, ids or directly on the HTML element.

```
.background, #background, body{  
background:#E5C0C0 }
```

If only the background color should be changed can be used:

```
.background{ background-color:#E5C0C0 }
```

This example shows the color as background, it is applied via the CSS property "background".

To optimize and compress your CSS code, you can use our [online CSS compressor and optimizer](#) based on csstidy. If you want to create a linear or radial gradient as background or border, check our [CSS Gradient Generator](#).



Hey! You found this booklet interesting? Support Converting Colors with the new Membership Option!

The pro membership hides all ads, plus gives you double the colors in the color bucket, and more awesome pro features!

**[Learn more, Memberships starting at \\$2.50/m!](#)**

**Follow me  
on Twitter!**

@ConvertingColor