

Converting Colors

Hex(E5C0C3)

Have a look what the booklet for
Hex(E5C0C3) contains.

| | |
|--|----|
| Hex(E5C0C3) | 3 |
| <i>Conversions</i> | 4 |
| <i>Details</i> | 6 |
| <i>Harmonies</i> | 11 |
| <i>Previews</i> | 23 |
| <i>Color Blindness Simulation</i> | 26 |
| <i>CSS Examples</i> | 29 |

Color

Hex(E5C0C3)

Conversions

Conversions Part 1

| Format | Color |
|---------------|---------------------------|
| Hex | E5C0C3 |
| RGB | 229, 192, 195 |
| RGB Percent | 90%, 75%, 76% |
| CMY | 0.1020, 0.2471, 0.2353 |
| CMYK | 0.00, 0.16, 0.15, 0.10 |
| HSL | 355°, 42%, 83% |
| HSV | 355°, 16%, 90% |
| XYZ | 61.0131, 58.2974, 59.6666 |
| YIQ | 203.4050, 21.0890, 8.7770 |

Conversions

Conversions Part 2

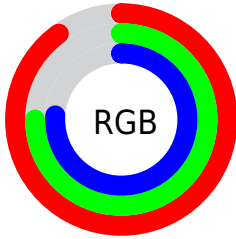
| Format | Color |
|-------------------------------------|-------------------------------|
| R_{YB} | 229, 192, 195 |
| Decimal | 15057091 |
| CIE _{Lab} | 80.90, 13.63, 3.41 |
| CIE _{LCh} | 81, 14.050, 14.052 |
| Yxy | 58.2974, 0.3409, 0.3257 |
| Android (android.graphics.Color) | 4293247171 (0xFFE5C0C3) |
| YUV | 203.4050, -4.1437, 22.4468 |
| Hunter-Lab | 76.3527, 9.0211, 7.1142 |

Details

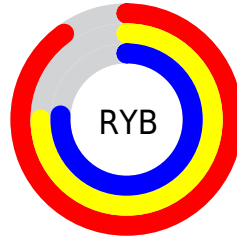
The Hex color **E5C0C3** is a light color, and the websafe version is hex **FFCCCC**. A complement of this color would be **C0E5E2**, and the grayscale version is **CBCBCB**.

A 20% lighter version of the original color is **FFF8FC**, and **AD8A8D** is the 20% darker color. If you saturate the color by 10%, you get **E5A9AE**, and if you desaturate by 10%, it is **E5D7D8**.

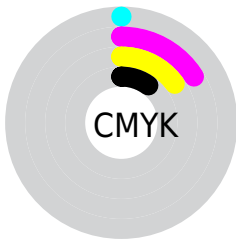
Distribution



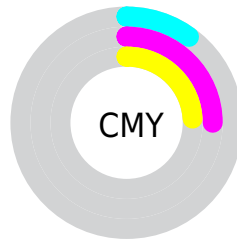
- Red (90%)
- Green (75%)
- Blue (76%)



- Red (90%)
- Yellow (75%)
- Blue (76%)



- Cyan (0%)
- Magenta (16%)
- Yellow (15%)
- Black (10%)



- Cyan (10%)
- Magenta (25%)
- Yellow (24%)

Brightness & Saturation Gradients

These gradients show how the Hex color E5C0C3 changes by changing the brightness by 10 percent. The first figure shows a shift by +10% for each color and the second figure -10%.

Similar to the brightness gradients but the following saturation gradients show a change of the Hex color E5C0C3 by changing the saturation by 10% instead.

 E5C0C3

 E5C0C3

FFFFFF

 C9A5A8

 FFF8FC

 AD8A8D

 927174

 78585B

 5F4144

 472B2E

 301619

 1D0000

 000000

 E5C0C3

 E5C0C3

 E5A9AE

 E5D7D8

 E59299

 E5EEED

 E57B84

 E5FFFF

 E5646F

 E54E5A

 E53745

 E52030

 E5091B

 E50013

Harmonies

Analogous

The Analogous color harmony consists of three colors that are next to each other on the color wheel.



DFC1D0



E5C0C3



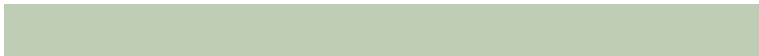
E3C2B7

Triad

The Triadic color harmony groups three colors that are evenly spaced from another and form a triangle on the color wheel.



E5C0C3



BECEB6



B3CCE2

Complementary

The Complementary color scheme is a pair of colors which are on the opposite of each other on the color wheel.



E5C0C3



C0E5E2

Split Complementary

Split-complementary colors differ from the complementary color scheme. The scheme consists of three colors, the original color and two neighbors of the complement color.



A9CFDB



E5C0C3



B0D0C1

Square

The Square scheme is like the rectangle color scheme, but the four colors are evenly spaced on the color wheel.



E5C0C3



CDCAAF



A8D1CF



C3C8E2

Rectangle

The Rectangle color scheme consists of four colors that form a rectangle on the color wheel.



E5C0C3



DEC4B2



A8D1CF



AFCDE0

Sweetspot

The Sweet Spot groups the original color and five complimentary colors.



E5C0C3



FFF2F3



E2C0E5



807878



000000



808080

Same Dimension

The Same Dimension uses a secret algorithm to generate beautiful new colors.



E5C0C3



FFCFD2



E5CFC0



736768



B3000E



330004

Inverse Universe

The Inverse Universe completely reimagines the original color for something new.



E5C0C3



FFCFD2



C0D6E5



736768



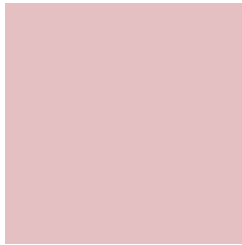
B3000E



330004

Previews

White Background



This preview shows how the Hex color E5C0C3 looks on a white background.

Color Contrast Check

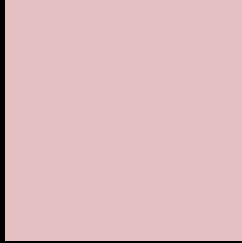
Large Text (above 18pt) WCAG AA × Fail

Any Text WCAG AA × Fail

Large Text (above 18pt) WCAG AAA × Fail

Any Text WCAG AAA × Fail

Black Background



This preview shows how the Hex color E5C0C3 looks on a black background.

Color Contrast Check

Large Text (above 18pt) WCAG AA ✓ Pass

Any Text WCAG AA ✓ Pass

Large Text (above 18pt) WCAG AAA ✓ Pass

Any Text WCAG AAA ✓ Pass

If you want to check with other color combinations, try the [Color Contrast Checker](#).

Hex E5C0C3 Background



This preview shows how black text looks on a background with the Hex color E5C0C3.

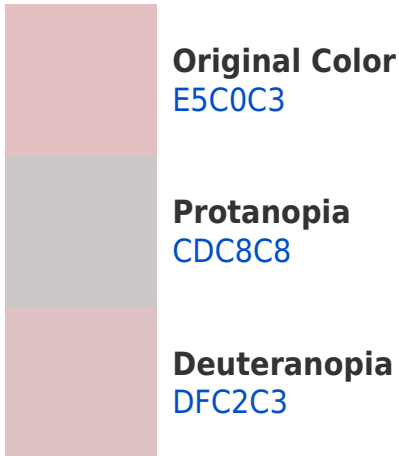


This preview shows how white text looks on a background with the Hex color E5C0C3.

Color Blindness Simulation

Color vision deficiency is a very complex topic, and I could not describe the different causes any better than Wikipedia does, so if you want to learn more, you should check out their [article about color blindness](#).

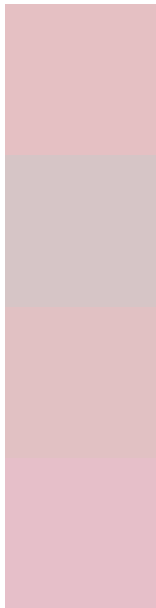
Dichromacy





Tritanopia
E6BECD

Trichromacy



Original Color
E5C0C3

Protanomaly
D6C5C6

Deuteranomaly
E1C1C3

Tritanomaly
E6BFC9

Monochromacy



Original Color
E5C0C3

Achromatopsia
CBCBCB

Achromatomaly
D4C7C8

CSS Examples

Text

The CSS property to change the color of the text to Hex E5C0C3 is called "color". The color property can be set on classes, ids or directly on the HTML element.

This example shows how text in the color #E5C0C3 looks like.

```
.text, #text, p{  
    color:#E5C0C3  
}
```

If you want to add a text shadow in that color use the text-shadow property, you can generate a text shadow directly with our [CSS Text Shadow Generator](#).

Here you see how black text with a 4 pixel #E5C0C3 colored shadow looks like.

```
.shadow{ text-shadow: 4px 4px 2px #E5C0C3  
}
```

Border

The CSS property to change the border of an element to Hex E5C0C3 is called "border". The border property can be set on classes, ids or directly on the HTML element.

This example shows the color as border, it can be applied via the CSS property "border" or "border-color".

```
.border, #border, table{ border:4px solid  
#E5C0C3 }
```

If only the border color should be changed use the property `border-color`.

```
.border{ border-color:#E5C0C3 }
```

If you want to add a box shadow in that color use:

Here you see how a box with a 4 pixel #E5C0C3 colored shadow looks like.

```
.boxshadow{ -moz-box-shadow:4px 4px 4px  
4px #E5C0C3; -webkit-box-shadow:4px 4px  
4px 4px #E5C0C3; box-shadow:4px 4px 4px  
4px #E5C0C3 }
```

Background

The CSS property to change the background color of an element to Hex E5C0C3 is called "background". The background property can be set on classes, ids or directly on the HTML element.

```
.background, #background, body{  
background:#E5C0C3 }
```

If only the background color should be changed can be used:

```
.background{ background-color:#E5C0C3 }
```

This example shows the color as background, it is applied via the CSS property "background".

To optimize and compress your CSS code, you can use our [online CSS compressor and optimizer](#) based on csstidy. If you want to create a linear or radial gradient as background or border, check our [CSS Gradient Generator](#).

Hey! You found this booklet interesting? Support Converting Colors with the new Membership Option!

The pro membership hides all ads, plus gives you double the colors in the color bucket, and more awesome pro features!

[Learn more, Memberships starting at \\$2.50/m!](#)

**Follow me
on Twitter!**

@ConvertingColor