

Converting Colors

Hex(E5C2BB)

Have a look what the booklet for
Hex(E5C2BB) contains.

Hex(E5C2BB)	3
<i>Conversions</i>	4
<i>Details</i>	6
<i>Harmonies</i>	11
<i>Previews</i>	23
<i>Color Blindness Simulation</i>	26
<i>CSS Examples</i>	29

Color

Hex(E5C2BB)

Conversions

Conversions Part 1

Format	Color
Hex	E5C2BB
RGB	229, 194, 187
RGB Percent	90%, 76%, 73%
CMY	0.1020, 0.2392, 0.2667
CMYK	0.00, 0.15, 0.18, 0.10
HSL	10°, 45%, 82%
HSV	10°, 18%, 90%
XYZ	60.5745, 58.8294, 55.1763
YIQ	203.6670, 23.1070, 5.2430

Conversions

Conversions Part 2

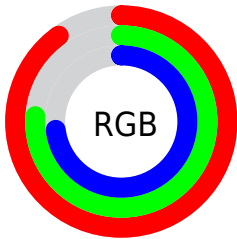
Format	Color
RYB	229, 195, 187
Decimal	15057595
CIELab	81.20, 11.33, 8.13
CIElCh	81, 13.943, 35.674
Yxy	58.8294, 0.3470, 0.3370
Android (android.graphics.Color)	4293247675 (0xFFE5C2BB)
YUV	203.6670, -8.2168, 22.2170
Hunter-Lab	76.7004, 6.7457, 11.0385

Details

The Hex color **E5C2BB** is a light color, and the websafe version is hex **FFCCCC**. A complement of this color would be **BBDEE5**, and the grayscale version is **CCCCCC**.

A 20% lighter version of the original color is **FFBF3**, and **AD8C86** is the 20% darker color. If you saturate the color by 10%, you get **E5AFA4**, and if you desaturate by 10%, it is **E5D5D2**.

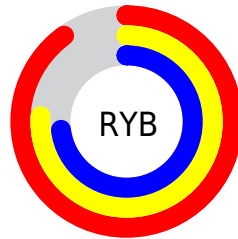
Distribution



Red (90%)

Green (76%)

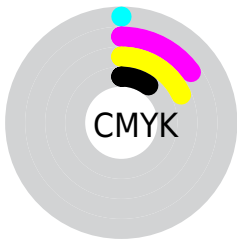
Blue (73%)



Red (90%)

Yellow (76%)

Blue (73%)

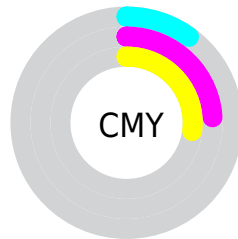


Cyan (0%)

Magenta (15%)

Yellow (18%)

Black (10%)



Cyan (10%)

Magenta (24%)

Yellow (27%)

Brightness & Saturation Gradients

These gradients show how the Hex color E5C2BB changes by changing the brightness by 10 percent. The first figure shows a shift by +10% for each color and the second figure -10%.

Similar to the brightness gradients but the following saturation gradients show a change of the Hex color E5C2BB by changing the saturation by 10% instead.

 E5C2BB

FFFFFF

 FFFBF3

 E5C2BB

 C9A7A0

 AD8C86

 92736D

 785A54

 5F433D

 462C27

 2F1713

 1B0000

 000000

 E5C2BB

 E5C2BB

 E5AFA4

 E5D5D2

 E59C8D

 E5E8E9

 E58976

 E5FBFF

 E5765F

 E5FFFF

 E56348

 E54F32

 E53C1B

 E52904

 E52600

Harmonies

Analogous

The Analogous color harmony consists of three colors that are next to each other on the color wheel.



E5C1C8



E5C2BB



DEC5B2

Triad

The Triadic color harmony groups three colors that are evenly spaced from another and form a triangle on the color wheel.



E5C2BB



B5D0BF



BFCAE3

Complementary

The Complementary color scheme is a pair of colors which are on the opposite of each other on the color wheel.



E5C2BB



BBDEE5

Split Complementary

Split-complementary colors differ from the complementary color scheme. The scheme consists of three colors, the original color and two neighbors of the complement color.



B0CEE1



E5C2BB



ABD2CC

Square

The Square scheme is like the rectangle color scheme, but the four colors are evenly spaced on the color wheel.



E5C2BB



C3CEB4



A9D1D8



CFC6DF

Rectangle

The Rectangle color scheme consists of four colors that form a rectangle on the color wheel.



E5C2BB



D6C8B0



A9D1D8



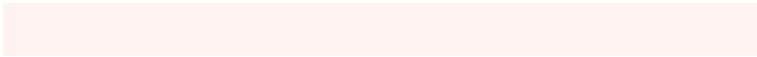
BACBE3

Sweetspot

The Sweet Spot groups the original color and five complimentary colors.



E5C2BB



FFF2F0



E5BBDE



807877



000000



808080

Same Dimension

The Same Dimension uses a secret algorithm to generate beautiful new colors.



E5C2BB



FFD0C7



E5D7BB



736967



B31E00



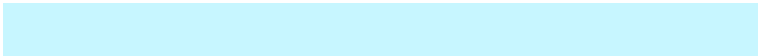
330800

Inverse Universe

The Inverse Universe completely reimagines the original color for something new.



BBDEE5



C7F6FF



BBC9E5



677173



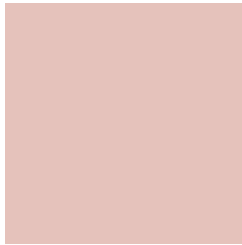
0095B3



002A33

Previews

White Background



This preview shows how the Hex color E5C2BB looks on a white background.

Color Contrast Check

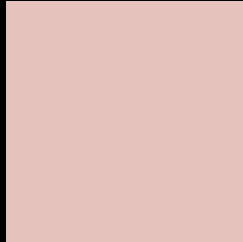
Large Text (above 18pt) WCAG AA × Fail

Any Text WCAG AA × Fail

Large Text (above 18pt) WCAG AAA × Fail

Any Text WCAG AAA × Fail

Black Background



This preview shows how the Hex color E5C2BB looks on a black background.

Color Contrast Check

Large Text (above 18pt) WCAG AA ✓ Pass

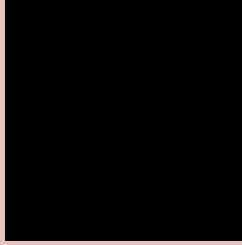
Any Text WCAG AA ✓ Pass

Large Text (above 18pt) WCAG AAA ✓ Pass

Any Text WCAG AAA ✓ Pass

If you want to check with other color combinations, try the [Color Contrast Checker](#).

Hex E5C2BB Background



This preview shows how black text looks on a background with the Hex color E5C2BB.

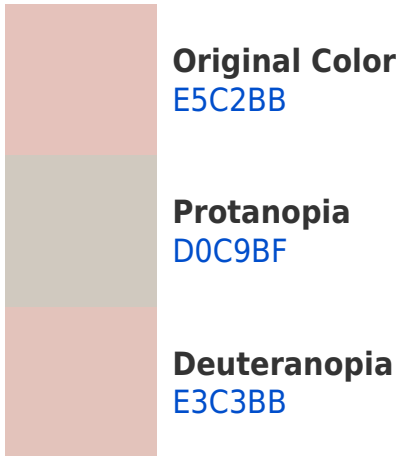


This preview shows how white text looks on a background with the Hex color E5C2BB.

Color Blindness Simulation

Color vision deficiency is a very complex topic, and I could not describe the different causes any better than Wikipedia does, so if you want to learn more, you should check out their [article about color blindness](#).

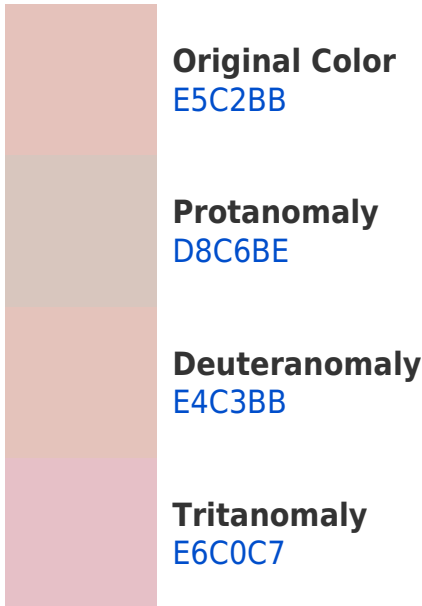
Dichromacy



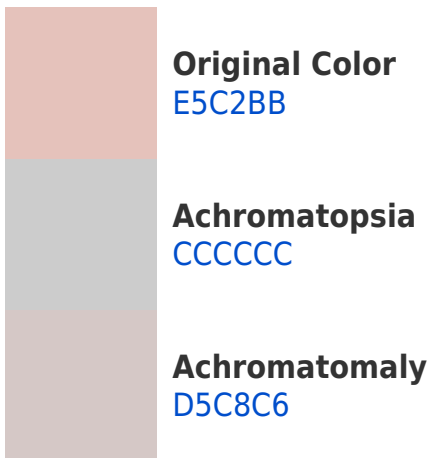


Tritanopia
E7BFCE

Trichromacy



Monochromacy



CSS Examples

Text

The CSS property to change the color of the text to Hex E5C2BB is called "color". The color property can be set on classes, ids or directly on the HTML element.

This example shows how text in the color #E5C2BB looks like.

```
.text, #text, p{  
    color:#E5C2BB  
}
```

If you want to add a text shadow in that color use the text-shadow property, you can generate a text shadow directly with our [CSS Text Shadow Generator](#).

Here you see how black text with a 4 pixel #E5C2BB colored shadow looks like.

```
.shadow{ text-shadow: 4px 4px 2px #E5C2BB  
}
```

Border

The CSS property to change the border of an element to Hex E5C2BB is called "border". The border property can be set on classes, ids or directly on the HTML element.

This example shows the color as border, it can be applied via the CSS property "border" or "border-color".

```
.border, #border, table{ border:4px solid  
#E5C2BB }
```

If only the border color should be changed use the property `border-color`.

```
.border{ border-color:#E5C2BB }
```

If you want to add a box shadow in that color use:

Here you see how a box with a 4 pixel #E5C2BB colored shadow looks like.

```
.boxshadow{ -moz-box-shadow:4px 4px 4px  
4px #E5C2BB; -webkit-box-shadow:4px 4px  
4px 4px #E5C2BB; box-shadow:4px 4px 4px  
4px #E5C2BB }
```

Background

The CSS property to change the background color of an element to Hex E5C2BB is called "background". The background property can be set on classes, ids or directly on the HTML element.

```
.background, #background, body{  
background:#E5C2BB }
```

If only the background color should be changed can be used:

```
.background{ background-color:#E5C2BB }
```

This example shows the color as background, it is applied via the CSS property "background".

To optimize and compress your CSS code, you can use our [online CSS compressor and optimizer](#) based on csstidy. If you want to create a linear or radial gradient as background or border, check our [CSS Gradient Generator](#).

Hey! You found this booklet interesting? Support Converting Colors with the new Membership Option!

The pro membership hides all ads, plus gives you double the colors in the color bucket, and more awesome pro features!

[Learn more, Memberships starting at \\$2.50/m!](#)

**Follow me
on Twitter!**

@ConvertingColor