

# Converting Colors

Hex(E5C5C5)

Have a look what the booklet for  
Hex(E5C5C5) contains.

<b>Hex(E5C5C5)</b> .....	3
<i><b>Conversions</b></i> .....	4
<i><b>Details</b></i> .....	6
<i><b>Harmonies</b></i> .....	11
<i><b>Previews</b></i> .....	23
<i><b>Color Blindness Simulation</b></i> .....	26
<i><b>CSS Examples</b></i> .....	29

# **Color**

**Hex(E5C5C5)**

# Conversions

## Conversions Part 1

<b>Format</b>	<b>Color</b>
Hex	E5C5C5
RGB	229, 197, 197
RGB Percent	90%, 77%, 77%
CMY	0.1020, 0.2275, 0.2275
CMYK	0.00, 0.14, 0.14, 0.10
HSL	0°, 38%, 84%
HSV	0°, 14%, 90%
XYZ	62.3574, 60.6217, 61.2379
YIQ	206.5680, 19.0720, 6.7840

# Conversions

## Conversions Part 2

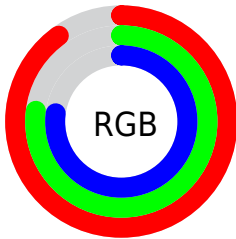
<b>Format</b>	<b>Color</b>
R <sub>Y</sub> B	229, 197, 197
Decimal	15058373
CIE Lab	82.17, 11.30, 4.18
CIE LCh	82, 12.044, 20.302
Yxy	60.6217, 0.3385, 0.3291
Android (android.graphics.Color)	4293248453 (0xFFE5C5C5)
YUV	206.5680, -4.7170, 19.6729
Hunter-Lab	77.8600, 6.7042, 7.8696

# Details

The Hex color **E5C5C5** is a light color, and the websafe version is hex **FFCCCC**. A complement of this color would be **C5E5E5**, and the grayscale version is **CFCFCF**.

A 20% lighter version of the original color is **FFFEFE**, and **AD8F8F** is the 20% darker color. If you saturate the color by 10%, you get **E5AEAE**, and if you desaturate by 10%, it is **E5DCDC**.

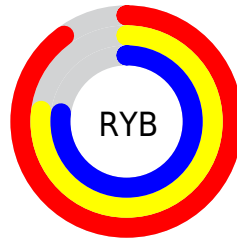
# Distribution



Red (90%)

Green (77%)

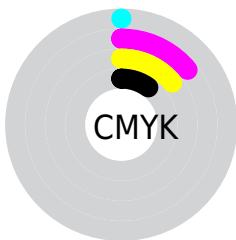
Blue (77%)



Red (90%)

Yellow (77%)

Blue (77%)

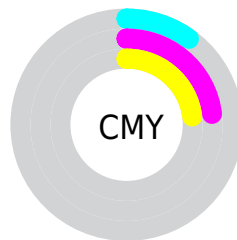


Cyan (0%)

Magenta (14%)

Yellow (14%)

Black (10%)



Cyan (10%)

Magenta (23%)

Yellow (23%)

# Brightness & Saturation Gradients

These gradients show how the Hex color E5C5C5 changes by changing the brightness by 10 percent. The first figure shows a shift by +10% for each color and the second figure -10%.

Similar to the brightness gradients but the following saturation gradients show a change of the Hex color E5C5C5 by changing the saturation by 10% instead.



 E5C5C5

 E5C5C5

FFFFFF

 C9AAAA

FFFEFE

 AD8F8F

 927676

 785D5D

 5F4546

 472F2F

 301A1B

 1E0000

 000000

 E5C5C5

 E5C5C5

 E5AEAE

 E5DCDC

 E59797

 E5F3F3

 E58080

 E5FFFF

 E56969

 E55353

 E53C3C

 E52525

 E50E0E

 E50000

# Harmonies

## Analogous

The Analogous color harmony consists of three colors that are next to each other on the color wheel.



E1C5D1



E5C5C5



E2C7BB

# Triad

The Triadic color harmony groups three colors that are evenly spaced from another and form a triangle on the color wheel.



E5C5C5



C0D1BE



BCCEE2

# Complementary

The Complementary color scheme is a pair of colors which are on the opposite of each other on the color wheel.



E5C5C5



C5E5E5

# Split Complementary

Split-complementary colors differ from the complementary color scheme. The scheme consists of three colors, the original color and two neighbors of the complement color.



B3D1DD



E5C5C5



B6D3C8

# Square

The Square scheme is like the rectangle color scheme, but the four colors are evenly spaced on the color wheel.



E5C5C5



CDCEB7



B0D3D4



CACBE1

# Rectangle

The Rectangle color scheme consists of four colors that form a rectangle on the color wheel.



E5C5C5



DDC9B7



B0D3D4



B9D0E1



# Sweetspot

The Sweet Spot groups the original color and five complimentary colors.



E5C5C5



FFF5F5



E5C5E5



807979



000000



808080



# Same Dimension

The Same Dimension uses a secret algorithm to generate beautiful new colors.



E5C5C5



FFD4D4



E5D5C5



736767



B30000



330000



# Inverse Universe

The Inverse Universe completely reimagines the original color for something new.



C5E5E5



D4FFFF



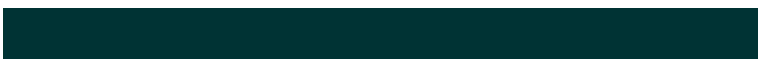
C5D5E5



677373



00B3B3



003333



# Previews

## White Background



This preview shows how the Hex color E5C5C5 looks on a white background.

## Color Contrast Check

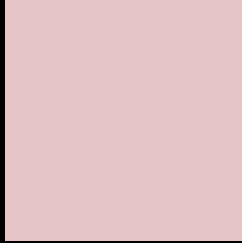
Large Text (above 18pt) WCAG AA × Fail

Any Text WCAG AA × Fail

Large Text (above 18pt) WCAG AAA × Fail

Any Text WCAG AAA × Fail

# Black Background



This preview shows how the Hex color E5C5C5 looks on a black background.

## Color Contrast Check

Large Text (above 18pt) WCAG AA ✓ Pass

Any Text WCAG AA ✓ Pass

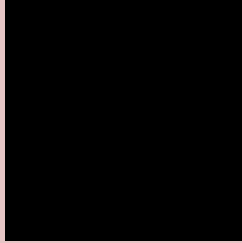
Large Text (above 18pt) WCAG AAA ✓ Pass

Any Text WCAG AAA ✓ Pass

If you want to check with other color combinations, try the [Color Contrast Checker](#).



## Hex E5C5C5 Background



This preview shows how black text looks on a background with the Hex color E5C5C5.

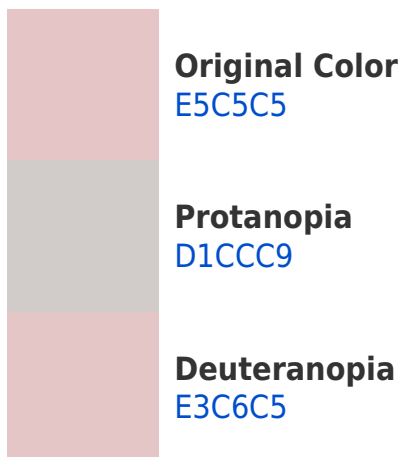


This preview shows how white text looks on a background with the Hex color E5C5C5.

# Color Blindness Simulation

Color vision deficiency is a very complex topic, and I could not describe the different causes any better than Wikipedia does, so if you want to learn more, you should check out their [article about color blindness](#).

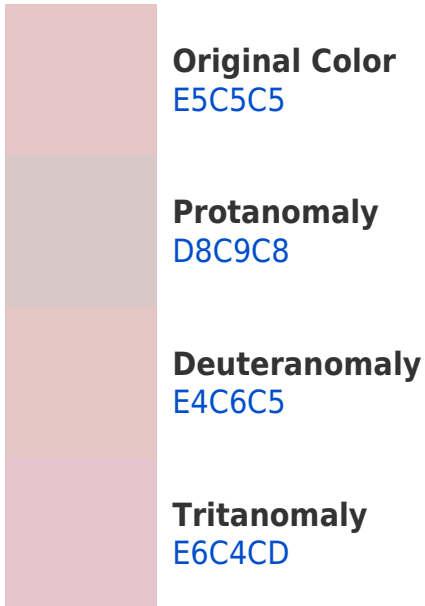
## Dichromacy



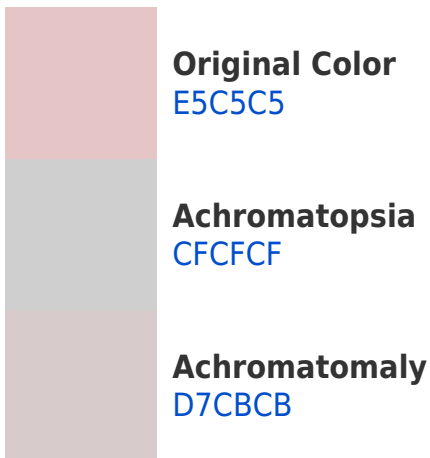


**Tritanopia**  
E7C3D2

# Trichromacy



# Monochromacy



# CSS Examples

## Text

The CSS property to change the color of the text to Hex E5C5C5 is called "color". The color property can be set on classes, ids or directly on the HTML element.

This example shows how text in the color #E5C5C5 looks like.

```
.text, #text, p{  
    color:#E5C5C5  
}
```

If you want to add a text shadow in that color use the text-shadow property, you can generate a text shadow directly with our [CSS Text Shadow Generator](#).

Here you see how black text with a 4 pixel #E5C5C5 colored shadow looks like.

```
.shadow{ text-shadow: 4px 4px 2px #E5C5C5
}
```

## Border

The CSS property to change the border of an element to Hex E5C5C5 is called "border". The border property can be set on classes, ids or directly on the HTML element.

This example shows the color as border, it can be applied via the CSS property "border" or "border-color".

```
.border, #border, table{ border:4px solid
#E5C5C5 }
```

If only the border color should be changed use the property `border-color`.

```
.border{ border-color:#E5C5C5 }
```

If you want to add a box shadow in that color use:

Here you see how a box with a 4 pixel #E5C5C5 colored shadow looks like.

```
.boxshadow{ -moz-box-shadow:4px 4px 4px  
4px #E5C5C5; -webkit-box-shadow:4px 4px  
4px 4px #E5C5C5; box-shadow:4px 4px 4px  
4px #E5C5C5 }
```

# Background

The CSS property to change the background color of an element to Hex E5C5C5 is called "background". The background property can be set on classes, ids or directly on the HTML element.

```
.background, #background, body{  
background:#E5C5C5 }
```

If only the background color should be changed can be used:

```
.background{ background-color:#E5C5C5 }
```

This example shows the color as background, it is applied via the CSS property "background".

To optimize and compress your CSS code, you can use our [online CSS compressor and optimizer](#) based on csstidy. If you want to create a linear or radial gradient as background or border, check our [CSS Gradient Generator](#).



Hey! You found this booklet interesting? Support Converting Colors with the new Membership Option!

The pro membership hides all ads, plus gives you double the colors in the color bucket, and more awesome pro features!

**[Learn more, Memberships starting at \\$2.50/m!](#)**

**Follow me  
on Twitter!**

@ConvertingColor