

# Converting Colors

Hex(E5C7C6)

Have a look what the booklet for  
Hex(E5C7C6) contains.

<b>Hex(E5C7C6)</b> .....	3
<b><i>Conversions</i></b> .....	4
<b><i>Details</i></b> .....	6
<b><i>Harmonies</i></b> .....	11
<b><i>Previews</i></b> .....	23
<b><i>Color Blindness Simulation</i></b> .....	26
<b><i>CSS Examples</i></b> .....	29

# **Color**

**Hex(E5C7C6)**

# Conversions

## Conversions Part 1

<b>Format</b>	<b>Color</b>
Hex	E5C7C6
RGB	229, 199, 198
RGB Percent	90%, 78%, 78%
CMY	0.1020, 0.2196, 0.2235
CMYK	0.00, 0.13, 0.14, 0.10
HSL	2°, 37%, 84%
HSV	2°, 14%, 90%
XYZ	62.9296, 61.5821, 61.9959
YIQ	207.8560, 18.2010, 6.0490

# Conversions

## Conversions Part 2

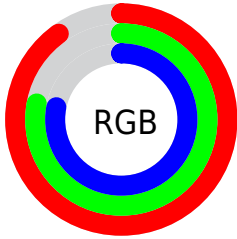
Format	Color
R <sub>Y</sub> B	229, 199, 198
Decimal	15058886
CIE Lab	82.69, 10.40, 4.39
CIE LCh	83, 11.286, 22.888
Yxy	61.5821, 0.3374, 0.3302
Android (android.graphics.Color)	4293248966 (0xFFE5C7C6)
YUV	207.8560, -4.8590, 18.5433
Hunter-Lab	78.4742, 5.8116, 8.0920

# Details

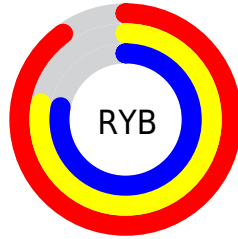
The Hex color **E5C7C6** is a light color, and the websafe version is hex **FFCCCC**. A complement of this color would be **C6E4E5**, and the grayscale version is **D0D0D0**.

A 20% lighter version of the original color is **FFFFFF**, and **AD9190** is the 20% darker color. If you saturate the color by 10%, you get **E5B1AF**, and if you desaturate by 10%, it is **E5DDDD**.

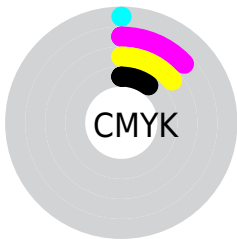
# Distribution



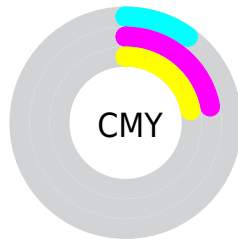
- Red (90%)
- Green (78%)
- Blue (78%)



- Red (90%)
- Yellow (78%)
- Blue (78%)



- Cyan (0%)
- Magenta (13%)
- Yellow (14%)
- Black (10%)



- Cyan (10%)
- Magenta (22%)
- Yellow (22%)

# Brightness & Saturation Gradients

These gradients show how the Hex color E5C7C6 changes by changing the brightness by 10 percent. The first figure shows a shift by +10% for each color and the second figure -10%.

Similar to the brightness gradients but the following saturation gradients show a change of the Hex color E5C7C6 by changing the saturation by 10% instead.



 E5C7C6

FFFFFF

 E5C7C6

 C9ACAB

 AD9190

 927777

 795F5E

 5F4746

 473030

 301B1B

 1E0100

 000000

 E5C7C6

 E5C7C6

 E5B1AF

 E5DDDD

 E59B98

 E5F3F4

 E58581

 E5FFFF

 E56E6A

 E55854

 E5423D

 E52C26

 E5160F

 E50700

# Harmonies

## Analogous

The Analogous color harmony consists of three colors that are next to each other on the color wheel.



E2C7D1



E5C7C6



E2C9BD

# Triad

The Triadic color harmony groups three colors that are evenly spaced from another and form a triangle on the color wheel.



E5C7C6



C2D2C1



C0CFE3

# Complementary

The Complementary color scheme is a pair of colors which are on the opposite of each other on the color wheel.



E5C7C6



C6E4E5

# Split Complementary

Split-complementary colors differ from the complementary color scheme. The scheme consists of three colors, the original color and two neighbors of the complement color.



B6D2DE



E5C7C6



B8D4CB

# Square

The Square scheme is like the rectangle color scheme, but the four colors are evenly spaced on the color wheel.



E5C7C6



CED0BA



B3D4D6



CDCCE1

# Rectangle

The Rectangle color scheme consists of four colors that form a rectangle on the color wheel.



E5C7C6



DDCBBA



B3D4D6



BCD1E2

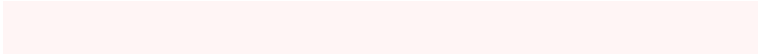


# Sweetspot

The Sweet Spot groups the original color and five complimentary colors.



E5C7C6



FFF5F5



E5C6E4



807979



000000



808080



# Same Dimension

The Same Dimension uses a secret algorithm to generate beautiful new colors.



E5C7C6



FFD8D6



E5D6C6



736867



B30600



330200



# Inverse Universe

The Inverse Universe completely reimagines the original color for something new.



C6E4E5



D6FEFF



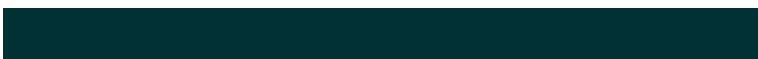
C6D5E5



677273



00ADB3



003133



# Previews

## White Background



This preview shows how the Hex color E5C7C6 looks on a white background.

## Color Contrast Check

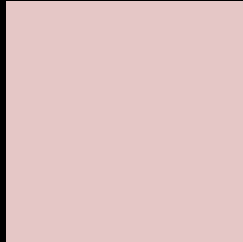
Large Text (above 18pt) WCAG AA × Fail

Any Text WCAG AA × Fail

Large Text (above 18pt) WCAG AAA × Fail

Any Text WCAG AAA × Fail

# Black Background



This preview shows how the Hex color E5C7C6 looks on a black background.

## Color Contrast Check

Large Text (above 18pt) WCAG AA ✓ Pass

Any Text WCAG AA ✓ Pass

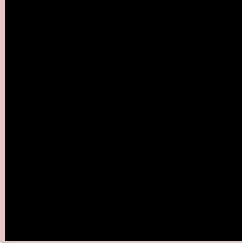
Large Text (above 18pt) WCAG AAA ✓ Pass

Any Text WCAG AAA ✓ Pass

If you want to check with other color combinations, try the [Color Contrast Checker](#).



## Hex E5C7C6 Background



This preview shows how black text looks on a background with the Hex color E5C7C6.

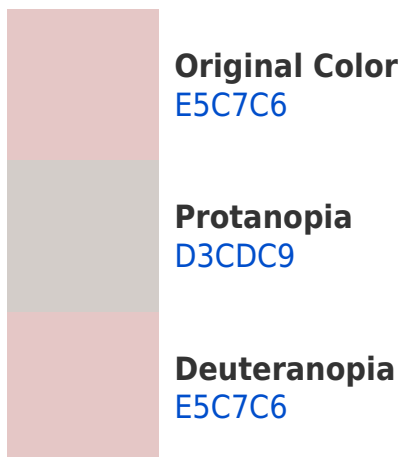


This preview shows how white text looks on a background with the Hex color E5C7C6.

# Color Blindness Simulation

Color vision deficiency is a very complex topic, and I could not describe the different causes any better than Wikipedia does, so if you want to learn more, you should check out their [article about color blindness](#).

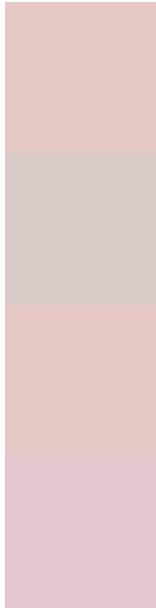
## Dichromacy





**Tritanopia**  
E7C5D4

# Trichromacy



**Original Color**  
E5C7C6

**Protanomaly**  
DACBC8

**Deuteranomaly**  
E5C7C6

**Tritanomaly**  
E6C6CF

# Monochromacy



**Original Color**  
E5C7C6

**Achromatopsia**  
D0D0D0

**Achromatomaly**  
D8CDCC

# CSS Examples

## Text

The CSS property to change the color of the text to Hex E5C7C6 is called "color". The color property can be set on classes, ids or directly on the HTML element.

This example shows how text in the color #E5C7C6 looks like.

```
.text, #text, p{  
    color:#E5C7C6  
}
```

If you want to add a text shadow in that color use the text-shadow property, you can generate a text shadow directly with our [CSS Text Shadow Generator](#).

Here you see how black text with a 4 pixel #E5C7C6 colored shadow looks like.

```
.shadow{ text-shadow: 4px 4px 2px #E5C7C6
}
```

## Border

The CSS property to change the border of an element to Hex E5C7C6 is called "border". The border property can be set on classes, ids or directly on the HTML element.

This example shows the color as border, it can be applied via the CSS property "border" or "border-color".

```
.border, #border, table{ border:4px solid
#E5C7C6 }
```

If only the border color should be changed use the property `border-color`.

```
.border{ border-color:#E5C7C6 }
```

If you want to add a box shadow in that color use:

Here you see how a box with a 4 pixel #E5C7C6 colored shadow looks like.

```
.boxshadow{ -moz-box-shadow:4px 4px 4px  
4px #E5C7C6; -webkit-box-shadow:4px 4px  
4px 4px #E5C7C6; box-shadow:4px 4px 4px  
4px #E5C7C6 }
```

# Background

The CSS property to change the background color of an element to Hex E5C7C6 is called "background". The background property can be set on classes, ids or directly on the HTML element.

```
.background, #background, body{  
background:#E5C7C6 }
```

If only the background color should be changed can be used:

```
.background{ background-color:#E5C7C6 }
```

This example shows the color as background, it is applied via the CSS property "background".

To optimize and compress your CSS code, you can use our [online CSS compressor and optimizer](#) based on csstidy. If you want to create a linear or radial gradient as background or border, check our [CSS Gradient Generator](#).



Hey! You found this booklet interesting? Support Converting Colors with the new Membership Option!

The pro membership hides all ads, plus gives you double the colors in the color bucket, and more awesome pro features!

**[Learn more, Memberships starting at \\$2.50/m!](#)**

**Follow me  
on Twitter!**

@ConvertingColor