

Converting Colors

Hex(E5C7D2)

Have a look what the booklet for
Hex(E5C7D2) contains.

Hex(E5C7D2)	3
<i>Conversions</i>	4
<i>Details</i>	6
<i>Harmonies</i>	11
<i>Previews</i>	23
<i>Color Blindness Simulation</i>	26
<i>CSS Examples</i>	29

Color

Hex(E5C7D2)

Conversions

Conversions Part 1

Format	Color
Hex	E5C7D2
RGB	229, 199, 210
RGB Percent	90%, 78%, 82%
CMY	0.1020, 0.2196, 0.1765
CMYK	0.00, 0.13, 0.08, 0.10
HSL	338°, 37%, 84%
HSV	338°, 13%, 90%
XYZ	64.3694, 62.1580, 69.5778
YIQ	209.2240, 14.3490, 9.7810

Conversions

Conversions Part 2

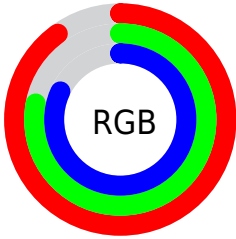
Format	Color
R _Y B	229, 199, 210
Decimal	15058898
CIE Lab	83.00, 12.37, -1.58
CIE LCh	83, 12.475, 352.718
Yxy	62.1580, 0.3282, 0.3170
Android (android.graphics.Color)	4293248978 (0xFFE5C7D2)
YUV	209.2240, 0.3826, 17.3436
Hunter-Lab	78.8403, 7.7661, 2.8639

Details

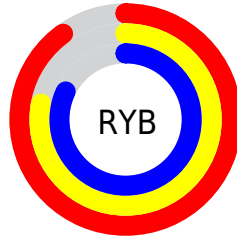
The Hex color **E5C7D2** is a light color, and the websafe version is hex **FFCCCC**. A complement of this color would be **C7E5DA**, and the grayscale version is **D1D1D1**.

A 20% lighter version of the original color is **FFFFFF**, and **AD919C** is the 20% darker color. If you saturate the color by 10%, you get **E5B0C3**, and if you desaturate by 10%, it is **E5DEE1**.

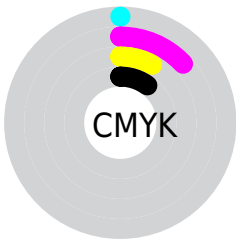
Distribution



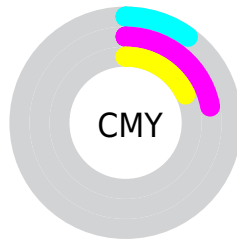
- Red (90%)
- Green (78%)
- Blue (82%)



- Red (90%)
- Yellow (78%)
- Blue (82%)



- Cyan (0%)
- Magenta (13%)
- Yellow (8%)
- Black (10%)



- Cyan (10%)
- Magenta (22%)
- Yellow (18%)

Brightness & Saturation Gradients

These gradients show how the Hex color E5C7D2 changes by changing the brightness by 10 percent. The first figure shows a shift by +10% for each color and the second figure -10%.

Similar to the brightness gradients but the following saturation gradients show a change of the Hex color E5C7D2 by changing the saturation by 10% instead.

 E5C7D2

FFFFFF

 E5C7D2

 C9ACB6

 AD919C

 937782

 795F68

 604750

 48303A

 311B24

 1D010F

 000000

 E5C7D2

 E5C7D2

 E5B0C3

 E5DEE1

 E599B5

 E5F5EF

 E582A6

 E5FFFE

 E56B98

 E5FFFF

 E55489

 E53E7B

 E5276C

 E5105E

 E50054

Harmonies

Analogous

The Analogous color harmony consists of three colors that are next to each other on the color wheel.



DBC9DD



E5C7D2



E8C7C6

Triad

The Triadic color harmony groups three colors that are evenly spaced from another and form a triangle on the color wheel.



E5C7D2



CFD1B9



B5D4E1

Complementary

The Complementary color scheme is a pair of colors which are on the opposite of each other on the color wheel.



E5C7D2



C7E5DA

Split Complementary

Split-complementary colors differ from the complementary color scheme. The scheme consists of three colors, the original color and two neighbors of the complement color.



B1D6D7



E5C7D2



C1D4C0

Square

The Square scheme is like the rectangle color scheme, but the four colors are evenly spaced on the color wheel.



E5C7D2



DBCDB8



B6D6CB



BFD1E6

Rectangle

The Rectangle color scheme consists of four colors that form a rectangle on the color wheel.



E5C7D2



E7C8BF



B6D6CB



B3D5DE

Sweetspot

The Sweet Spot groups the original color and five complimentary colors.



E5C7D2



FFF5F9



DAC7E5



80797B



000000



808080

Same Dimension

The Same Dimension uses a secret algorithm to generate beautiful new colors.



E5C7D2



FFD6E5



E5CBC7



73676B



B30041



330013

Inverse Universe

The Inverse Universe completely reimagines the original color for something new.



E5C7D2



FFD6E5



C7E1E5



73676B



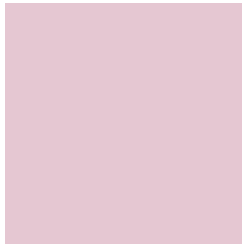
B30041



330013

Previews

White Background



This preview shows how the Hex color E5C7D2 looks on a white background.

Color Contrast Check

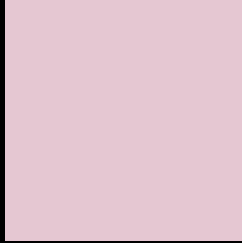
Large Text (above 18pt) WCAG AA × Fail

Any Text WCAG AA × Fail

Large Text (above 18pt) WCAG AAA × Fail

Any Text WCAG AAA × Fail

Black Background



This preview shows how the Hex color E5C7D2 looks on a black background.

Color Contrast Check

Large Text (above 18pt) WCAG AA ✓ Pass

Any Text WCAG AA ✓ Pass

Large Text (above 18pt) WCAG AAA ✓ Pass

Any Text WCAG AAA ✓ Pass

If you want to check with other color combinations, try the [Color Contrast Checker](#).

Hex E5C7D2 Background



This preview shows how black text looks on a background with the Hex color E5C7D2.



This preview shows how white text looks on a background with the Hex color E5C7D2.

Color Blindness Simulation

Color vision deficiency is a very complex topic, and I could not describe the different causes any better than Wikipedia does, so if you want to learn more, you should check out their [article about color blindness](#).

Dichromacy



Original Color
E5C7D2

Protanopia
D0CED6

Deuteranopia
E1C8D2



Tritanopia
E6C6D6

Trichromacy



Original Color
E5C7D2

Protanomaly
D8CBD5

Deuteranomaly
E2C8D2

Tritanomaly
E6C6D5

Monochromacy



Original Color
E5C7D2

Achromatopsia
D1D1D1

Achromatomaly
D8CDD1

CSS Examples

Text

The CSS property to change the color of the text to Hex E5C7D2 is called "color". The color property can be set on classes, ids or directly on the HTML element.

This example shows how text in the color #E5C7D2 looks like.

```
.text, #text, p{  
    color:#E5C7D2  
}
```

If you want to add a text shadow in that color use the text-shadow property, you can generate a text shadow directly with our [CSS Text Shadow Generator](#).

Here you see how black text with a 4 pixel #E5C7D2 colored shadow looks like.

```
.shadow{ text-shadow: 4px 4px 2px #E5C7D2
}
```

Border

The CSS property to change the border of an element to Hex E5C7D2 is called "border". The border property can be set on classes, ids or directly on the HTML element.

This example shows the color as border, it can be applied via the CSS property "border" or "border-color".

```
.border, #border, table{ border:4px solid
#E5C7D2 }
```

If only the border color should be changed use the property `border-color`.

```
.border{ border-color:#E5C7D2 }
```

If you want to add a box shadow in that color use:

Here you see how a box with a 4 pixel #E5C7D2 colored shadow looks like.

```
.boxshadow{ -moz-box-shadow:4px 4px 4px  
4px #E5C7D2; -webkit-box-shadow:4px 4px  
4px 4px #E5C7D2; box-shadow:4px 4px 4px  
4px #E5C7D2 }
```

Background

The CSS property to change the background color of an element to Hex E5C7D2 is called "background". The background property can be set on classes, ids or directly on the HTML element.

```
.background, #background, body{  
background:#E5C7D2 }
```

If only the background color should be changed can be used:

```
.background{ background-color:#E5C7D2 }
```

This example shows the color as background, it is applied via the CSS property "background".

To optimize and compress your CSS code, you can use our [online CSS compressor and optimizer](#) based on csstidy. If you want to create a linear or radial gradient as background or border, check our [CSS Gradient Generator](#).

Hey! You found this booklet interesting? Support Converting Colors with the new Membership Option!

The pro membership hides all ads, plus gives you double the colors in the color bucket, and more awesome pro features!

[Learn more, Memberships starting at \\$2.50/m!](#)

**Follow me
on Twitter!**

@ConvertingColor