

# Converting Colors

Hex(E5C8C2)

Have a look what the booklet for  
Hex(E5C8C2) contains.

<b>Hex(E5C8C2)</b> .....	3
<b><i>Conversions</i></b> .....	4
<b><i>Details</i></b> .....	6
<b><i>Harmonies</i></b> .....	11
<b><i>Previews</i></b> .....	23
<b><i>Color Blindness Simulation</i></b> .....	26
<b><i>CSS Examples</i></b> .....	29

# **Color**

**Hex(E5C8C2)**

# Conversions

## Conversions Part 1

Format	Color
Hex	E5C8C2
RGB	229, 200, 194
RGB Percent	90%, 78%, 76%
CMY	0.1020, 0.2157, 0.2392
CMYK	0.00, 0.13, 0.15, 0.10
HSL	10°, 40%, 83%
HSV	10°, 15%, 90%
XYZ	62.7050, 61.8616, 59.6745
YIQ	207.9870, 19.2100, 4.2820

# Conversions

## Conversions Part 2

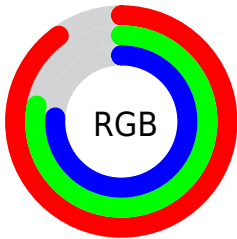
Format	Color
RYB	229, 201, 194
Decimal	15059138
CIELab	82.84, 9.24, 6.74
CIElCh	83, 11.435, 36.129
Yxy	61.8616, 0.3403, 0.3358
Android (android.graphics.Color)	4293249218 (0xFFE5C8C2)
YUV	207.9870, -6.8956, 18.4284
Hunter-Lab	78.6522, 4.6668, 10.0723

# Details

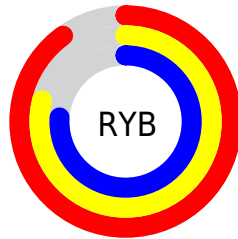
The Hex color **E5C8C2** is a light color, and the websafe version is hex **FFCCCC**. A complement of this color would be **C2DFE5**, and the grayscale version is **D0D0D0**.

A 20% lighter version of the original color is **FFFFFFA**, and **AD928C** is the 20% darker color. If you saturate the color by 10%, you get **E5B5AB**, and if you desaturate by 10%, it is **E5DBD9**.

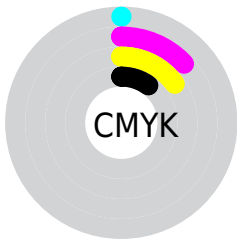
# Distribution



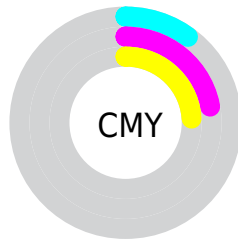
- Red (90%)
- Green (78%)
- Blue (76%)



- Red (90%)
- Yellow (79%)
- Blue (76%)



- Cyan (0%)
- Magenta (13%)
- Yellow (15%)
- Black (10%)



- Cyan (10%)
- Magenta (22%)
- Yellow (24%)

# Brightness & Saturation Gradients

These gradients show how the Hex color E5C8C2 changes by changing the brightness by 10 percent. The first figure shows a shift by +10% for each color and the second figure -10%.

Similar to the brightness gradients but the following saturation gradients show a change of the Hex color E5C8C2 by changing the saturation by 10% instead.



 E5C8C2

 E5C8C2

FFFFFF

 C9ADA7

 FFFFFA

 AD928C

 927873

 78605A

 5F4843

 47312D

 301C18

 1D0300

 000000

 E5C8C2

 E5C8C2

 E5B5AB

 E5DBD9

 E5A294

 E5EEF0

 E58F7D

 E5FFFF

 E57C66

 E5694F

 E55639

 E54322

 E5300B

 E52700

# Harmonies

## Analogous

The Analogous color harmony consists of three colors that are next to each other on the color wheel.



E5C7CC



E5C8C2



DFCBBB

# Triad

The Triadic color harmony groups three colors that are evenly spaced from another and form a triangle on the color wheel.



E5C8C2



BDD4C5



C6CEE3

# Complementary

The Complementary color scheme is a pair of colors which are on the opposite of each other on the color wheel.



E5C8C2



C2DFE5

# Split Complementary

Split-complementary colors differ from the complementary color scheme. The scheme consists of three colors, the original color and two neighbors of the complement color.



BAD2E1



E5C8C2



B5D5D0

# Square

The Square scheme is like the rectangle color scheme, but the four colors are evenly spaced on the color wheel.



E5C8C2



C9D1BD



B4D4DA



D3CBE0

# Rectangle

The Rectangle color scheme consists of four colors that form a rectangle on the color wheel.



E5C8C2



D9CDB9



B4D4DA



C1D0E3



# Sweetspot

The Sweet Spot groups the original color and five complimentary colors.



E5C8C2



FFF4F2



E5C2DF



807978



000000



808080

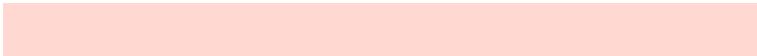


# Same Dimension

The Same Dimension uses a secret algorithm to generate beautiful new colors.



E5C8C2



FFD9D1



E5D9C2



736967



B31F00



330900

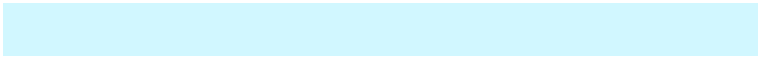


# Inverse Universe

The Inverse Universe completely reimagines the original color for something new.



C2DFE5



D1F7FF



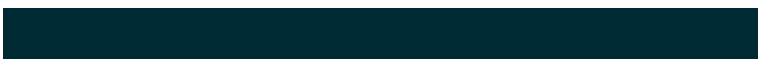
C2CEE5



677173



0094B3



002A33



# Previews

## White Background



This preview shows how the Hex color E5C8C2 looks on a white background.

## Color Contrast Check

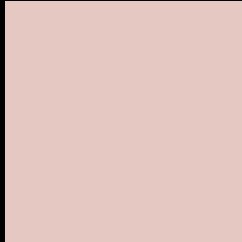
Large Text (above 18pt) WCAG AA × Fail

Any Text WCAG AA × Fail

Large Text (above 18pt) WCAG AAA × Fail

Any Text WCAG AAA × Fail

# Black Background



This preview shows how the Hex color E5C8C2 looks on a black background.

## Color Contrast Check

Large Text (above 18pt) WCAG AA ✓ Pass

Any Text WCAG AA ✓ Pass

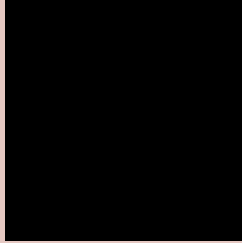
Large Text (above 18pt) WCAG AAA ✓ Pass

Any Text WCAG AAA ✓ Pass

If you want to check with other color combinations, try the [Color Contrast Checker](#).



## Hex E5C8C2 Background



This preview shows how black text looks on a background with the Hex color E5C8C2.

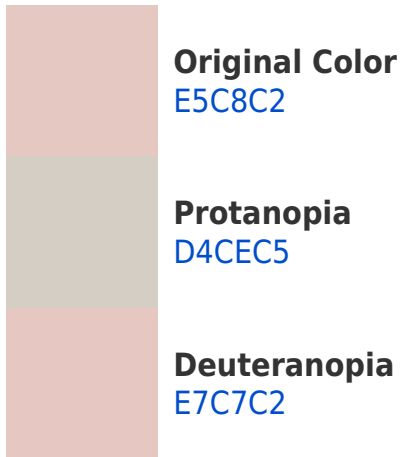


This preview shows how white text looks on a background with the Hex color E5C8C2.

# Color Blindness Simulation

Color vision deficiency is a very complex topic, and I could not describe the different causes any better than Wikipedia does, so if you want to learn more, you should check out their [article about color blindness](#).

## Dichromacy





**Tritanopia**  
E7C5D5

# Trichromacy



**Original Color**  
E5C8C2

**Protanomaly**  
DACCC4

**Deuteranomaly**  
E6C7C2

**Tritanomaly**  
E6C6CE

# Monochromacy



**Original Color**  
E5C8C2

**Achromatopsia**  
D0D0D0

**Achromatomaly**  
D8CDCB

# CSS Examples

## Text

The CSS property to change the color of the text to Hex E5C8C2 is called "color". The color property can be set on classes, ids or directly on the HTML element.

This example shows how text in the color #E5C8C2 looks like.

```
.text, #text, p{  
    color:#E5C8C2  
}
```

If you want to add a text shadow in that color use the text-shadow property, you can generate a text shadow directly with our [CSS Text Shadow Generator](#).

Here you see how black text with a 4 pixel #E5C8C2 colored shadow looks like.

```
.shadow{ text-shadow: 4px 4px 2px #E5C8C2
}
```

## Border

The CSS property to change the border of an element to Hex E5C8C2 is called "border". The border property can be set on classes, ids or directly on the HTML element.

This example shows the color as border, it can be applied via the CSS property "border" or "border-color".

```
.border, #border, table{ border:4px solid
#E5C8C2 }
```

If only the border color should be changed use the property `border-color`.

```
.border{ border-color:#E5C8C2 }
```

If you want to add a box shadow in that color use:

Here you see how a box with a 4 pixel #E5C8C2 colored shadow looks like.

```
.boxshadow{ -moz-box-shadow:4px 4px 4px  
4px #E5C8C2; -webkit-box-shadow:4px 4px  
4px 4px #E5C8C2; box-shadow:4px 4px 4px  
4px #E5C8C2 }
```

# Background

The CSS property to change the background color of an element to Hex E5C8C2 is called "background". The background property can be set on classes, ids or directly on the HTML element.

```
.background, #background, body{  
background:#E5C8C2 }
```

If only the background color should be changed can be used:

```
.background{ background-color:#E5C8C2 }
```

This example shows the color as background, it is applied via the CSS property "background".

To optimize and compress your CSS code, you can use our [online CSS compressor and optimizer](#) based on csstidy. If you want to create a linear or radial gradient as background or border, check our [CSS Gradient Generator](#).



Hey! You found this booklet interesting? Support Converting Colors with the new Membership Option!

The pro membership hides all ads, plus gives you double the colors in the color bucket, and more awesome pro features!

**[Learn more, Memberships starting at \\$2.50/m!](#)**

**Follow me  
on Twitter!**

@ConvertingColor