

Converting Colors

Hex(E5C9D3)

Have a look what the booklet for
Hex(E5C9D3) contains.

Hex(E5C9D3)	3
<i>Conversions</i>	4
<i>Details</i>	6
<i>Harmonies</i>	11
<i>Previews</i>	23
<i>Color Blindness Simulation</i>	26
<i>CSS Examples</i>	29

Color

Hex(E5C9D3)

Conversions

Conversions Part 1

Format	Color
Hex	E5C9D3
RGB	229, 201, 211
RGB Percent	90%, 79%, 83%
CMY	0.1020, 0.2118, 0.1725
CMYK	0.00, 0.12, 0.08, 0.10
HSL	339°, 35%, 84%
HSV	339°, 12%, 90%
XYZ	64.9576, 63.1345, 70.3905
YIQ	210.5120, 13.4780, 9.0460

Conversions

Conversions Part 2

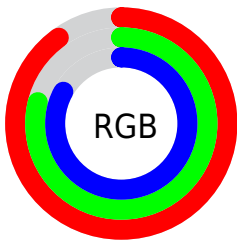
Format	Color
R _Y B	229, 201, 211
Decimal	15059411
CIE Lab	83.51, 11.48, -1.36
CIE LCh	84, 11.565, 353.246
Yxy	63.1345, 0.3273, 0.3181
Android (android.graphics.Color)	4293249491 (0xFFE5C9D3)
YUV	210.5120, 0.2406, 16.2140
Hunter-Lab	79.4572, 6.8767, 3.0955

Details

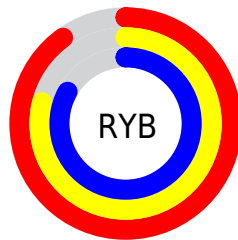
The Hex color **E5C9D3** is a light color, and the websafe version is hex **FFCCCC**. A complement of this color would be **C9E5DB**, and the grayscale version is **D3D3D3**.

A 20% lighter version of the original color is **FFFFFF**, and **AD939D** is the 20% darker color. If you saturate the color by 10%, you get **E5B2C4**, and if you desaturate by 10%, it is **E5E0E2**.

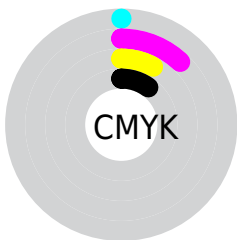
Distribution



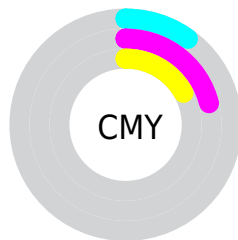
- Red (90%)
- Green (79%)
- Blue (83%)



- Red (90%)
- Yellow (79%)
- Blue (83%)



- Cyan (0%)
- Magenta (12%)
- Yellow (8%)
- Black (10%)



- Cyan (10%)
- Magenta (21%)
- Yellow (17%)

Brightness & Saturation Gradients

These gradients show how the Hex color E5C9D3 changes by changing the brightness by 10 percent. The first figure shows a shift by +10% for each color and the second figure -10%.

Similar to the brightness gradients but the following saturation gradients show a change of the Hex color E5C9D3 by changing the saturation by 10% instead.

 E5C9D3

FFFFFF

 E5C9D3

 C9AEB7

 AD939D

 937982

 796069

 604951

 48323A

 311D25

 1D0410

 000000

 E5C9D3

 E5C9D3

 E5B2C4

 E5E0E2

 E59BB6

 E5F7F0

 E584A7

 E5FFFF

 E56D98

 E55689

 E5407B

 E5296C

 E5125D

 E50052

Harmonies

Analogous

The Analogous color harmony consists of three colors that are next to each other on the color wheel.



DCCBDD



E5C9D3



E8C9C8

Triad

The Triadic color harmony groups three colors that are evenly spaced from another and form a triangle on the color wheel.



E5C9D3



D0D2BC



B8D5E1

Complementary

The Complementary color scheme is a pair of colors which are on the opposite of each other on the color wheel.



E5C9D3



C9E5DB

Split Complementary

Split-complementary colors differ from the complementary color scheme. The scheme consists of three colors, the original color and two neighbors of the complement color.



B5D6D8



E5C9D3



C3D5C3

Square

The Square scheme is like the rectangle color scheme, but the four colors are evenly spaced on the color wheel.



E5C9D3



DCCEBB



B9D7CD



C2D2E5

Rectangle

The Rectangle color scheme consists of four colors that form a rectangle on the color wheel.



E5C9D3



E6CAC2



B9D7CD



B6D6DF

Sweetspot

The Sweet Spot groups the original color and five complimentary colors.



E5C9D3



FFF5F8



DBC9E5



80797B



000000



808080

Same Dimension

The Same Dimension uses a secret algorithm to generate beautiful new colors.



E5C9D3



FFD9E6



E5CDC9



73676B



B30040



330012

Inverse Universe

The Inverse Universe completely reimagines the original color for something new.



E5C9D3



FFD9E6



C9E1E5



73676B



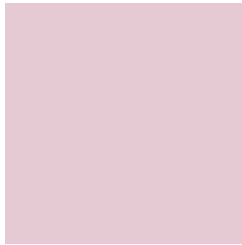
B30040



330012

Previews

White Background



This preview shows how the Hex color E5C9D3 looks on a white background.

Color Contrast Check

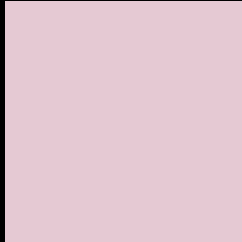
Large Text (above 18pt) WCAG AA × Fail

Any Text WCAG AA × Fail

Large Text (above 18pt) WCAG AAA × Fail

Any Text WCAG AAA × Fail

Black Background



This preview shows how the Hex color E5C9D3 looks on a black background.

Color Contrast Check

Large Text (above 18pt) WCAG AA ✓ Pass

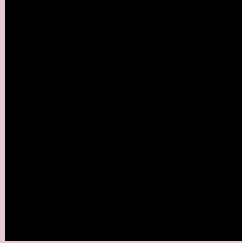
Any Text WCAG AA ✓ Pass

Large Text (above 18pt) WCAG AAA ✓ Pass

Any Text WCAG AAA ✓ Pass

If you want to check with other color combinations, try the [Color Contrast Checker](#).

Hex E5C9D3 Background



This preview shows how black text looks on a background with the Hex color E5C9D3.

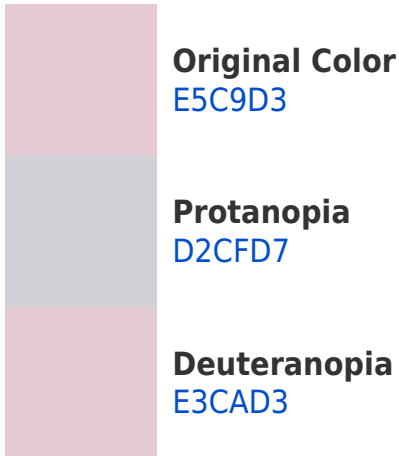


This preview shows how white text looks on a background with the Hex color E5C9D3.

Color Blindness Simulation

Color vision deficiency is a very complex topic, and I could not describe the different causes any better than Wikipedia does, so if you want to learn more, you should check out their [article about color blindness](#).

Dichromacy





Tritanopia
E6C8D8

Trichromacy



Original Color
E5C9D3

Protanomaly
D9CDD6

Deuteranomaly
E4CAD3

Tritanomaly
E6C8D6

Monochromacy



Original Color
E5C9D3

Achromatopsia
D3D3D3

Achromatomaly
DACFD3

CSS Examples

Text

The CSS property to change the color of the text to Hex E5C9D3 is called "color". The color property can be set on classes, ids or directly on the HTML element.

This example shows how text in the color #E5C9D3 looks like.

```
.text, #text, p{  
    color:#E5C9D3  
}
```

If you want to add a text shadow in that color use the text-shadow property, you can generate a text shadow directly with our [CSS Text Shadow Generator](#).

Here you see how black text with a 4 pixel #E5C9D3 colored shadow looks like.

```
.shadow{ text-shadow: 4px 4px 2px #E5C9D3
}
```

Border

The CSS property to change the border of an element to Hex E5C9D3 is called "border". The border property can be set on classes, ids or directly on the HTML element.

This example shows the color as border, it can be applied via the CSS property "border" or "border-color".

```
.border, #border, table{ border:4px solid
#E5C9D3 }
```

If only the border color should be changed use the property `border-color`.

```
.border{ border-color:#E5C9D3 }
```

If you want to add a box shadow in that color use:

Here you see how a box with a 4 pixel #E5C9D3 colored shadow looks like.

```
.boxshadow{ -moz-box-shadow:4px 4px 4px  
4px #E5C9D3; -webkit-box-shadow:4px 4px  
4px 4px #E5C9D3; box-shadow:4px 4px 4px  
4px #E5C9D3 }
```

Background

The CSS property to change the background color of an element to Hex E5C9D3 is called "background". The background property can be set on classes, ids or directly on the HTML element.

```
.background, #background, body{  
background:#E5C9D3 }
```

If only the background color should be changed can be used:

```
.background{ background-color:#E5C9D3 }
```

This example shows the color as background, it is applied via the CSS property "background".

To optimize and compress your CSS code, you can use our [online CSS compressor and optimizer](#) based on csstidy. If you want to create a linear or radial gradient as background or border, check our [CSS Gradient Generator](#).

Hey! You found this booklet interesting? Support Converting Colors with the new Membership Option!

The pro membership hides all ads, plus gives you double the colors in the color bucket, and more awesome pro features!

[Learn more, Memberships starting at \\$2.50/m!](#)

**Follow me
on Twitter!**

@ConvertingColor