

Converting Colors

Hex(E5CACA)

Have a look what the booklet for
Hex(E5CACA) contains.

Hex(E5CACA)	3
<i>Conversions</i>	4
<i>Details</i>	6
<i>Harmonies</i>	11
<i>Previews</i>	23
<i>Color Blindness Simulation</i>	26
<i>CSS Examples</i>	29

Color

Hex(E5CACA)

Conversions

Conversions Part 1

Format	Color
Hex	E5CACA
RGB	229, 202, 202
RGB Percent	90%, 79%, 79%
CMY	0.1020, 0.2078, 0.2078
CMYK	0.00, 0.12, 0.12, 0.10
HSL	0°, 34%, 85%
HSV	0°, 12%, 90%
XYZ	64.0943, 63.1633, 64.6907
YIQ	210.0730, 16.0920, 5.7240

Conversions

Conversions Part 2

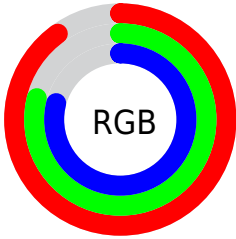
Format	Color
R _Y B	229, 202, 202
Decimal	15059658
CIE Lab	83.53, 9.46, 3.47
CIE LCh	84, 10.074, 20.122
Yxy	63.1633, 0.3339, 0.3291
Android (android.graphics.Color)	4293249738 (0xFFE5CACA)
YUV	210.0730, -3.9800, 16.5990
Hunter-Lab	79.4754, 4.8725, 7.3724

Details

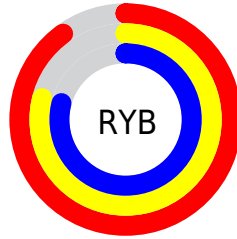
The Hex color **E5CACA** is a light color, and the websafe version is hex **FFCCCC**. A complement of this color would be **CAE5E5**, and the grayscale version is **D2D2D2**.

A 20% lighter version of the original color is **FFFFFF**, and **AD9494** is the 20% darker color. If you saturate the color by 10%, you get **E5B3B3**, and if you desaturate by 10%, it is **E5E1E1**.

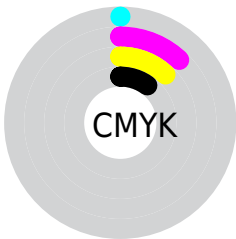
Distribution



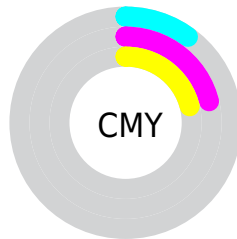
- Red (90%)
- Green (79%)
- Blue (79%)



- Red (90%)
- Yellow (79%)
- Blue (79%)



- Cyan (0%)
- Magenta (12%)
- Yellow (12%)
- Black (10%)



- Cyan (10%)
- Magenta (21%)
- Yellow (21%)

Brightness & Saturation Gradients

These gradients show how the Hex color E5CACA changes by changing the brightness by 10 percent. The first figure shows a shift by +10% for each color and the second figure -10%.

Similar to the brightness gradients but the following saturation gradients show a change of the Hex color E5CACA by changing the saturation by 10% instead.

 E5CACA

 E5CACA

FFFFFF

 C9AFAF


 AD9494

 937A7A

 796161

 60494A

 483333

 311E1E

 1D0505

 000000

 E5CACA

 E5CACA

 E5B3B3

 E5E1E1

 E59C9C

 E5F8F8

 E58585

 E5FFFF

 E56E6E

 E55757

 E54141

 E52A2A

 E51313

 E50000

Harmonies

Analogous

The Analogous color harmony consists of three colors that are next to each other on the color wheel.



E2CAD4



E5CACA



E3CCC2

Triad

The Triadic color harmony groups three colors that are evenly spaced from another and form a triangle on the color wheel.



E5CACA



C6D4C4



C3D2E3

Complementary

The Complementary color scheme is a pair of colors which are on the opposite of each other on the color wheel.



E5CACA



CAE5E5

Split Complementary

Split-complementary colors differ from the complementary color scheme. The scheme consists of three colors, the original color and two neighbors of the complement color.



BBD4DE



E5CACA



BDD6CD

Square

The Square scheme is like the rectangle color scheme, but the four colors are evenly spaced on the color wheel.



E5CACA



D1D2BE



B9D6D6



CECFE2

Rectangle

The Rectangle color scheme consists of four colors that form a rectangle on the color wheel.



E5CACA



DECDBF



B9D6D6



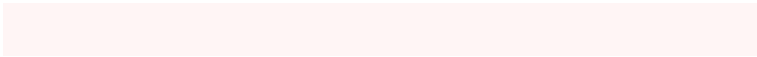
C0D3E2

Sweetspot

The Sweet Spot groups the original color and five complimentary colors.



E5CACA



FFF5F5



E5CAE5



807979



000000



808080

Same Dimension

The Same Dimension uses a secret algorithm to generate beautiful new colors.



E5CACA



FFDBDB



E5D8CA



736767



B30000



330000

Inverse Universe

The Inverse Universe completely reimagines the original color for something new.



CAE5E5



DBFFFF



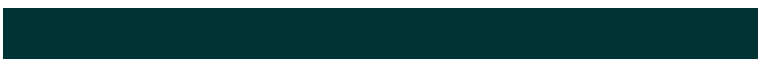
CAD8E5



677373



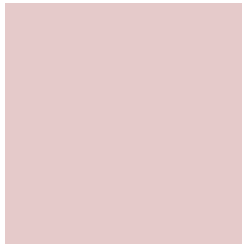
00B3B3



003333

Previews

White Background



This preview shows how the Hex color E5CACA looks on a white background.

Color Contrast Check

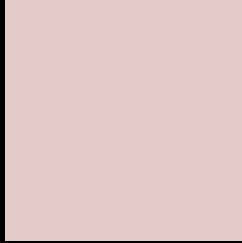
Large Text (above 18pt) WCAG AA × Fail

Any Text WCAG AA × Fail

Large Text (above 18pt) WCAG AAA × Fail

Any Text WCAG AAA × Fail

Black Background



This preview shows how the Hex color E5CACA looks on a black background.

Color Contrast Check

Large Text (above 18pt) WCAG AA ✓ Pass

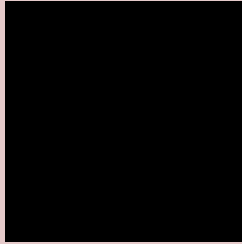
Any Text WCAG AA ✓ Pass

Large Text (above 18pt) WCAG AAA ✓ Pass

Any Text WCAG AAA ✓ Pass

If you want to check with other color combinations, try the [Color Contrast Checker](#).

Hex E5CACA Background



This preview shows how black text looks on a background with the Hex color E5CACA.

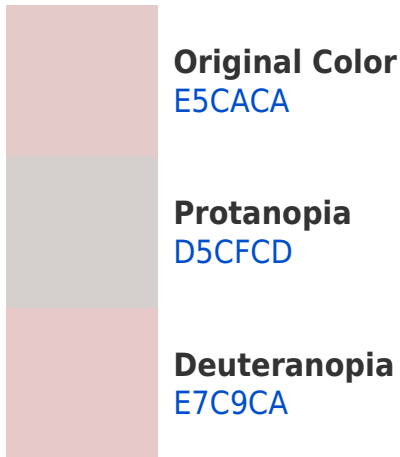


This preview shows how white text looks on a background with the Hex color E5CACA.

Color Blindness Simulation

Color vision deficiency is a very complex topic, and I could not describe the different causes any better than Wikipedia does, so if you want to learn more, you should check out their [article about color blindness](#).

Dichromacy





Tritanopia
E7C8D8

Trichromacy



Original Color
E5CACA

Protanomaly
DBCDC

Deuteranomaly
E6C9CA

Tritanomaly
E6C9D3

Monochromacy



Original Color
E5CACA

Achromatopsia
D2D2D2

Achromatomaly
D9CFD9

CSS Examples

Text

The CSS property to change the color of the text to Hex E5CACA is called "color". The color property can be set on classes, ids or directly on the HTML element.

This example shows how text in the color #E5CACA looks like.

```
.text, #text, p{  
  color:#E5CACA  
}
```

If you want to add a text shadow in that color use the text-shadow property, you can generate a text shadow directly with our [CSS Text Shadow Generator](#).

Here you see how black text with a 4 pixel #E5CACA colored shadow looks like.

```
.shadow{ text-shadow: 4px 4px 2px #E5CACA
}
```

Border

The CSS property to change the border of an element to Hex E5CACA is called "border". The border property can be set on classes, ids or directly on the HTML element.

This example shows the color as border, it can be applied via the CSS property "border" or "border-color".

```
.border, #border, table{ border:4px solid
#E5CACA }
```

If only the border color should be changed use the property `border-color`.

```
.border{ border-color:#E5CACA }
```

If you want to add a box shadow in that color use:

Here you see how a box with a 4 pixel #E5CACA colored shadow looks like.

```
.boxshadow{ -moz-box-shadow:4px 4px 4px  
4px #E5CACA; -webkit-box-shadow:4px 4px  
4px 4px #E5CACA; box-shadow:4px 4px 4px  
4px #E5CACA }
```

Background

The CSS property to change the background color of an element to Hex E5CACA is called "background". The background property can be set on classes, ids or directly on the HTML element.

```
.background, #background, body{  
background:#E5CACA }
```

If only the background color should be changed can be used:

```
.background{ background-color:#E5CACA }
```

This example shows the color as background, it is applied via the CSS property "background".

To optimize and compress your CSS code, you can use our [online CSS compressor and optimizer](#) based on csstidy. If you want to create a linear or radial gradient as background or border, check our [CSS Gradient Generator](#).

Hey! You found this booklet interesting? Support Converting Colors with the new Membership Option!

The pro membership hides all ads, plus gives you double the colors in the color bucket, and more awesome pro features!

[Learn more, Memberships starting at \\$2.50/m!](#)

**Follow me
on Twitter!**

@ConvertingColor