

# Converting Colors

Hex(E5CCBF)

Have a look what the booklet for  
Hex(E5CCBF) contains.

<b>Hex(E5CCBF)</b> .....	3
<b><i>Conversions</i></b> .....	4
<b><i>Details</i></b> .....	6
<b><i>Harmonies</i></b> .....	11
<b><i>Previews</i></b> .....	23
<b><i>Color Blindness Simulation</i></b> .....	26
<b><i>CSS Examples</i></b> .....	29

# **Color**

**Hex(E5CCBF)**

# Conversions

## Conversions Part 1

Format	Color
Hex	E5CCBF
RGB	229, 204, 191
RGB Percent	90%, 80%, 75%
CMY	0.1020, 0.2000, 0.2510
CMYK	0.00, 0.11, 0.17, 0.10
HSL	21°, 42%, 82%
HSV	21°, 17%, 90%
XYZ	63.3099, 63.6053, 58.2305
YIQ	209.9930, 19.0730, 1.2570

# Conversions

## Conversions Part 2

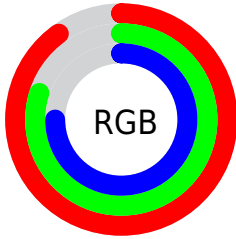
Format	Color
R <sub>Y</sub> B	229, 211, 191
Decimal	15060159
CIE Lab	83.76, 6.67, 9.66
CIE LCh	84, 11.736, 55.394
Yxy	63.6053, 0.3419, 0.3435
Android (android.graphics.Color)	4293250239 (0xFFE5CCBF)
YUV	209.9930, -9.3635, 16.6691
Hunter-Lab	79.7530, 2.1302, 12.5373

# Details

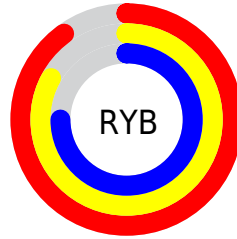
The Hex color **E5CCBF** is a light color, and the websafe version is hex **CCCCCC**. A complement of this color would be **BFD8E5**, and the grayscale version is **D2D2D2**.

A 20% lighter version of the original color is **FFFFFF7**, and **AD968A** is the 20% darker color. If you saturate the color by 10%, you get **E5BDA8**, and if you desaturate by 10%, it is **E5DBD6**.

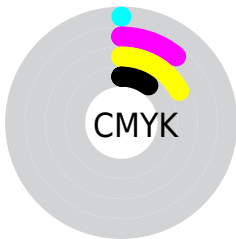
# Distribution



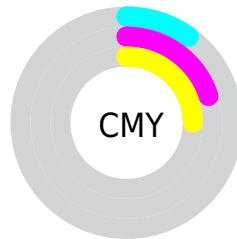
- Red (90%)
- Green (80%)
- Blue (75%)



- Red (90%)
- Yellow (83%)
- Blue (75%)



- Cyan (0%)
- Magenta (11%)
- Yellow (17%)
- Black (10%)



- Cyan (10%)
- Magenta (20%)
- Yellow (25%)

# Brightness & Saturation Gradients

These gradients show how the Hex color E5CCBF changes by changing the brightness by 10 percent. The first figure shows a shift by +10% for each color and the second figure -10%.

Similar to the brightness gradients but the following saturation gradients show a change of the Hex color E5CCBF by changing the saturation by 10% instead.



 E5CCBF

 E5CCBF

FFFFFFF

 C9B1A4

 FFFFFF7

 AD968A

 927C70

 786358

 5F4B40

 47352A

 301F16

 1C0800

 000000

 E5CCBF

 E5CCBF

 E5BDA8

 E5DBD6

 E5AE91

 E5EAED

 E59F7A

 E5F9FF

 E59063

 E5FFFF

 E5814D

 E57236

 E5631F

 E55308

 E54E00

# Harmonies

## Analogous

The Analogous color harmony consists of three colors that are next to each other on the color wheel.



E9CAC8



E5CCBF



DCCFBB

# Triad

The Triadic color harmony groups three colors that are evenly spaced from another and form a triangle on the color wheel.



E5CCBF



B9D7CF



D1CFE5

# Complementary

The Complementary color scheme is a pair of colors which are on the opposite of each other on the color wheel.



E5CCBF



BFD8E5

# Split Complementary

Split-complementary colors differ from the complementary color scheme. The scheme consists of three colors, the original color and two neighbors of the complement color.



C3D2E7



E5CCBF



B5D7DA

# Square

The Square scheme is like the rectangle color scheme, but the four colors are evenly spaced on the color wheel.



E5CCBF



C3D6C4



B9D5E3



DECBDD

# Rectangle

The Rectangle color scheme consists of four colors that form a rectangle on the color wheel.



E5CCBF



D4D2BC



B9D5E3



CCD0E6



# Sweetspot

The Sweet Spot groups the original color and five complimentary colors.



E5CCBF



FFF7F2



E5BFD8



807A78



000000



808080

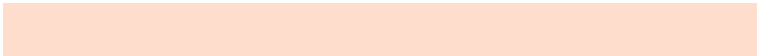


# Same Dimension

The Same Dimension uses a secret algorithm to generate beautiful new colors.



E5CCBF



FFDDCC



E5DFBF



736B67



B33D00



331100

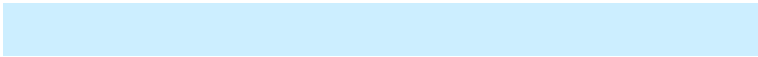


# Inverse Universe

The Inverse Universe completely reimagines the original color for something new.



BFD8E5



CCEEFF



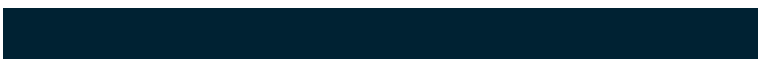
BFC5E5



676F73



0075B3



002233



# Previews

## White Background



This preview shows how the Hex color E5CCBF looks on a white background.

## Color Contrast Check

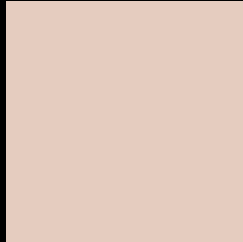
Large Text (above 18pt) WCAG AA × Fail

Any Text WCAG AA × Fail

Large Text (above 18pt) WCAG AAA × Fail

Any Text WCAG AAA × Fail

# Black Background



This preview shows how the Hex color E5CCBF looks on a black background.

## Color Contrast Check

Large Text (above 18pt) WCAG AA ✓ Pass

Any Text WCAG AA ✓ Pass

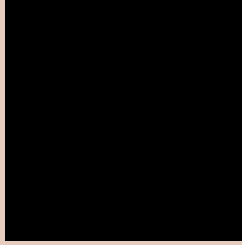
Large Text (above 18pt) WCAG AAA ✓ Pass

Any Text WCAG AAA ✓ Pass

If you want to check with other color combinations, try the [Color Contrast Checker](#).



## Hex E5CCBF Background



This preview shows how black text looks on a background with the Hex color E5CCBF.

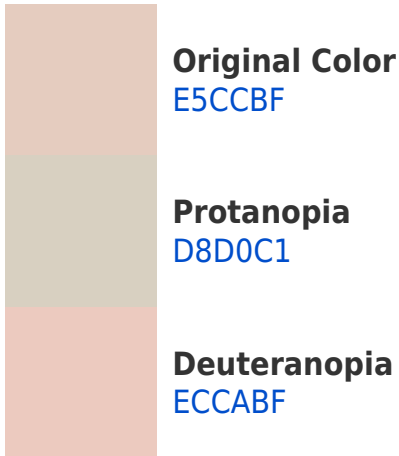


This preview shows how white text looks on a background with the Hex color E5CCBF.

# Color Blindness Simulation

Color vision deficiency is a very complex topic, and I could not describe the different causes any better than Wikipedia does, so if you want to learn more, you should check out their [article about color blindness](#).

## Dichromacy





**Tritanopia**  
E8C8D8

# Trichromacy



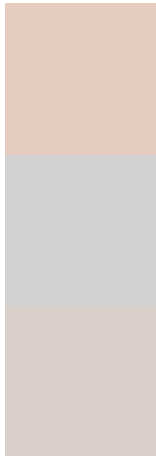
**Original Color**  
E5CCBF

**Protanomaly**  
DDCFC0

**Deuteranomaly**  
E9CBBF

**Tritanomaly**  
E7C9CF

# Monochromacy



**Original Color**  
E5CCBF

**Achromatopsia**  
D2D2D2

**Achromatomaly**  
D9D0CB

# CSS Examples

## Text

The CSS property to change the color of the text to Hex E5CCBF is called "color". The color property can be set on classes, ids or directly on the HTML element.

This example shows how text in the color #E5CCBF looks like.

```
.text, #text, p{  
    color:#E5CCBF  
}
```

If you want to add a text shadow in that color use the text-shadow property, you can generate a text shadow directly with our [CSS Text Shadow Generator](#).

Here you see how black text with a 4 pixel #E5CCBF colored shadow looks like.

```
.shadow{ text-shadow: 4px 4px 2px #E5CCBF
}
```

## Border

The CSS property to change the border of an element to Hex E5CCBF is called "border". The border property can be set on classes, ids or directly on the HTML element.

This example shows the color as border, it can be applied via the CSS property "border" or "border-color".

```
.border, #border, table{ border:4px solid
#E5CCBF }
```

If only the border color should be changed use the property `border-color`.

```
.border{ border-color:#E5CCBF }
```

If you want to add a box shadow in that color use:

Here you see how a box with a 4 pixel #E5CCBF colored shadow looks like.

```
.boxshadow{ -moz-box-shadow:4px 4px 4px  
4px #E5CCBF; -webkit-box-shadow:4px 4px  
4px 4px #E5CCBF; box-shadow:4px 4px 4px  
4px #E5CCBF }
```

# Background

The CSS property to change the background color of an element to Hex E5CCBF is called "background". The background property can be set on classes, ids or directly on the HTML element.

```
.background, #background, body{  
background:#E5CCBF }
```

If only the background color should be changed can be used:

```
.background{ background-color:#E5CCBF }
```

This example shows the color as background, it is applied via the CSS property "background".

To optimize and compress your CSS code, you can use our [online CSS compressor and optimizer](#) based on csstidy. If you want to create a linear or radial gradient as background or border, check our [CSS Gradient Generator](#).



Hey! You found this booklet interesting? Support Converting Colors with the new Membership Option!

The pro membership hides all ads, plus gives you double the colors in the color bucket, and more awesome pro features!

**[Learn more, Memberships starting at \\$2.50/m!](#)**

**Follow me  
on Twitter!**

@ConvertingColor