

# Converting Colors

Hex(E5CDD5)

Have a look what the booklet for  
Hex(E5CDD5) contains.

<b>Hex(E5CDD5)</b> .....	3
<i><b>Conversions</b></i> .....	4
<i><b>Details</b></i> .....	6
<i><b>Harmonies</b></i> .....	11
<i><b>Previews</b></i> .....	23
<i><b>Color Blindness Simulation</b></i> .....	26
<i><b>CSS Examples</b></i> .....	29

# **Color**

**Hex(E5CDD5)**

# Conversions

## Conversions Part 1

<b>Format</b>	<b>Color</b>
Hex	E5CDD5
RGB	229, 205, 213
RGB Percent	90%, 80%, 84%
CMY	0.1020, 0.1961, 0.1647
CMYK	0.00, 0.10, 0.07, 0.10
HSL	340°, 32%, 85%
HSV	340°, 10%, 90%
XYZ	66.1547, 65.1248, 72.0344
YIQ	213.0880, 11.7360, 7.5760

# Conversions

## Conversions Part 2

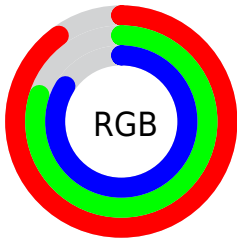
Format	Color
R <sub>Y</sub> B	229, 205, 213
Decimal	15060437
CIE Lab	84.55, 9.71, -0.91
CIE LCh	85, 9.755, 354.638
Yxy	65.1248, 0.3254, 0.3203
Android (android.graphics.Color)	4293250517 (0xFFE5CDD5)
YUV	213.0880, -0.0434, 13.9548
Hunter-Lab	80.6999, 5.1025, 3.5665

# Details

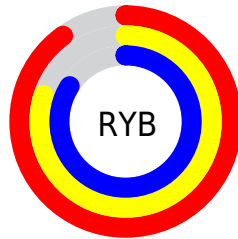
The Hex color **E5CDD5** is a light color, and the websafe version is hex **CCCCCC**. A complement of this color would be **CDE5DD**, and the grayscale version is **D5D5D5**.

A 20% lighter version of the original color is **FFFFFF**, and **AD979E** is the 20% darker color. If you saturate the color by 10%, you get **E5B6C6**, and if you desaturate by 10%, it is **E5E4E4**.

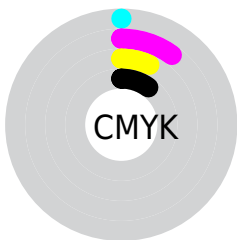
# Distribution



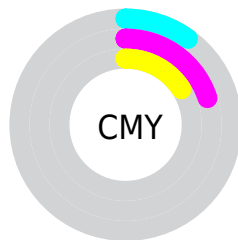
- Red (90%)
- Green (80%)
- Blue (84%)



- Red (90%)
- Yellow (80%)
- Blue (84%)



- Cyan (0%)
- Magenta (10%)
- Yellow (7%)
- Black (10%)



- Cyan (10%)
- Magenta (20%)
- Yellow (16%)

# Brightness & Saturation Gradients

These gradients show how the Hex color E5CDD5 changes by changing the brightness by 10 percent. The first figure shows a shift by +10% for each color and the second figure -10%.

Similar to the brightness gradients but the following saturation gradients show a change of the Hex color E5CDD5 by changing the saturation by 10% instead.



 E5CDD5

FFFFFF

 E5CDD5

 C9B2B9

 AD979E

 937D84

 79646B

 604C53

 48353C

 312026

 1D0912

 000000

 E5CDD5

 E5CDD5

 E5B6C6

 E5E4E4

 E59FB6

 E5FBF4

 E588A7

 E5FFFF

 E57198

 E55B89

 E54479

 E52D6A

 E5165B

 E5004C

# Harmonies

## Analogous

The Analogous color harmony consists of three colors that are next to each other on the color wheel.



DECFDE



E5CDD5



E7CDCC

# Triad

The Triadic color harmony groups three colors that are evenly spaced from another and form a triangle on the color wheel.



E5CDD5



D2D5C2



BFD7E2

# Complementary

The Complementary color scheme is a pair of colors which are on the opposite of each other on the color wheel.



E5CDD5



CDE5DD

# Split Complementary

Split-complementary colors differ from the complementary color scheme. The scheme consists of three colors, the original color and two neighbors of the complement color.



BCD8DA



E5CDD5



C8D7C8

# Square

The Square scheme is like the rectangle color scheme, but the four colors are evenly spaced on the color wheel.



E5CDD5



DDD2C1



C0D8D1



C8D4E5

# Rectangle

The Rectangle color scheme consists of four colors that form a rectangle on the color wheel.



E5CDD5



E6CEC6



C0D8D1



BED8E0

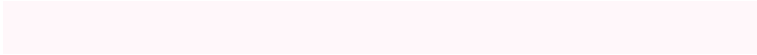


# Sweetspot

The Sweet Spot groups the original color and five complimentary colors.



E5CDD5



FFF7FA



DDCDE5



807A7C



000000



808080



# Same Dimension

The Same Dimension uses a secret algorithm to generate beautiful new colors.



E5CDD5



FFDEE9



E5D1CD



73676B



B3003C



330011



# Inverse Universe

The Inverse Universe completely reimagines the original color for something new.



E5CDD5



FFDEE9



CDE1E5



73676B



B3003C

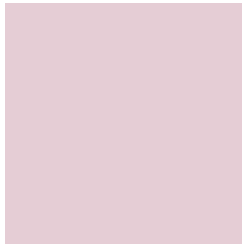


330011



# Previews

## White Background



This preview shows how the Hex color E5CDD5 looks on a white background.

## Color Contrast Check

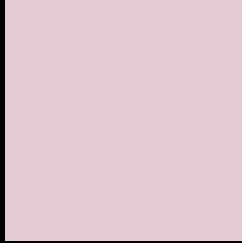
Large Text (above 18pt) WCAG AA × Fail

Any Text WCAG AA × Fail

Large Text (above 18pt) WCAG AAA × Fail

Any Text WCAG AAA × Fail

# Black Background



This preview shows how the Hex color E5CDD5 looks on a black background.

## Color Contrast Check

Large Text (above 18pt) WCAG AA ✓ Pass

Any Text WCAG AA ✓ Pass

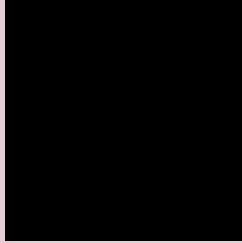
Large Text (above 18pt) WCAG AAA ✓ Pass

Any Text WCAG AAA ✓ Pass

If you want to check with other color combinations, try the [Color Contrast Checker](#).



## Hex E5CDD5 Background



This preview shows how black text looks on a background with the Hex color E5CDD5.

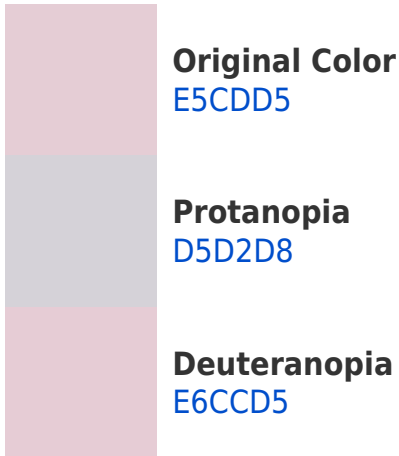


This preview shows how white text looks on a background with the Hex color E5CDD5.

# Color Blindness Simulation

Color vision deficiency is a very complex topic, and I could not describe the different causes any better than Wikipedia does, so if you want to learn more, you should check out their [article about color blindness](#).

## Dichromacy





# Trichromacy



**Original Color**  
E5CDD5

**Protanomaly**  
DBD0D7

**Deuteranomaly**  
E6CCD5

**Tritanomaly**  
E6CCD9

# Monochromacy



**Original Color**  
E5CDD5

**Achromatopsia**  
D5D5D5

**Achromatomaly**  
DBD2D5

# CSS Examples

## Text

The CSS property to change the color of the text to Hex E5CDD5 is called "color". The color property can be set on classes, ids or directly on the HTML element.

This example shows how text in the color #E5CDD5 looks like.

```
.text, #text, p{  
    color:#E5CDD5  
}
```

If you want to add a text shadow in that color use the text-shadow property, you can generate a text shadow directly with our [CSS Text Shadow Generator](#).

Here you see how black text with a 4 pixel #E5CDD5 colored shadow looks like.

```
.shadow{ text-shadow: 4px 4px 2px #E5CDD5
}
```

## Border

The CSS property to change the border of an element to Hex E5CDD5 is called "border". The border property can be set on classes, ids or directly on the HTML element.

This example shows the color as border, it can be applied via the CSS property "border" or "border-color".

```
.border, #border, table{ border:4px solid
#E5CDD5 }
```

If only the border color should be changed use the property `border-color`.

```
.border{ border-color:#E5CDD5 }
```

If you want to add a box shadow in that color use:

Here you see how a box with a 4 pixel #E5CDD5 colored shadow looks like.

```
.boxshadow{ -moz-box-shadow:4px 4px 4px  
4px #E5CDD5; -webkit-box-shadow:4px 4px  
4px 4px #E5CDD5; box-shadow:4px 4px 4px  
4px #E5CDD5 }
```

# Background

The CSS property to change the background color of an element to Hex E5CDD5 is called "background". The background property can be set on classes, ids or directly on the HTML element.

```
.background, #background, body{  
background:#E5CDD5 }
```

If only the background color should be changed can be used:

```
.background{ background-color:#E5CDD5 }
```

This example shows the color as background, it is applied via the CSS property "background".

To optimize and compress your CSS code, you can use our [online CSS compressor and optimizer](#) based on csstidy. If you want to create a linear or radial gradient as background or border, check our [CSS Gradient Generator](#).



Hey! You found this booklet interesting? Support Converting Colors with the new Membership Option!

The pro membership hides all ads, plus gives you double the colors in the color bucket, and more awesome pro features!

**[Learn more, Memberships starting at \\$2.50/m!](#)**

**Follow me  
on Twitter!**

@ConvertingColor