

# Converting Colors

Hex(E5CECE)

Have a look what the booklet for  
Hex(E5CECE) contains.

<b>Hex(E5CECE)</b> .....	3
<i><b>Conversions</b></i> .....	4
<i><b>Details</b></i> .....	6
<i><b>Harmonies</b></i> .....	11
<i><b>Previews</b></i> .....	23
<i><b>Color Blindness Simulation</b></i> .....	26
<i><b>CSS Examples</b></i> .....	29

# **Color**

**Hex(E5CECE)**

# Conversions

## Conversions Part 1

Format	Color
Hex	E5CECE
RGB	229, 206, 206
RGB Percent	90%, 81%, 81%
CMY	0.1020, 0.1922, 0.1922
CMYK	0.00, 0.10, 0.10, 0.10
HSL	0°, 31%, 85%
HSV	0°, 10%, 90%
XYZ	65.5250, 65.2569, 67.5348
YIQ	212.8770, 13.7080, 4.8760

# Conversions

## Conversions Part 2

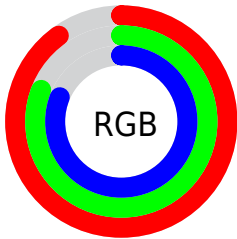
<b>Format</b>	<b>Color</b>
R <sub>Y</sub> B	229, 206, 206
Decimal	15060686
CIE Lab	84.62, 8.01, 2.91
CIE LCh	85, 8.522, 19.982
Yxy	65.2569, 0.3304, 0.3291
Android (android.graphics.Color)	4293250766 (0xFFE5CECE)
YUV	212.8770, -3.3904, 14.1399
Hunter-Lab	80.7817, 3.4198, 6.9798

# Details

The Hex color **E5CECE** is a light color, and the websafe version is hex **CCCCCC**. A complement of this color would be **CEE5E5**, and the grayscale version is **D5D5D5**.

A 20% lighter version of the original color is **FFFFFF**, and **AD9898** is the 20% darker color. If you saturate the color by 10%, you get **E5B7B7**, and if you desaturate by 10%, it is **E5E5E5**.

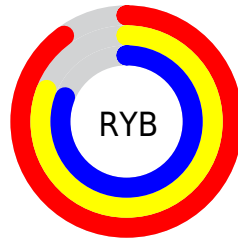
# Distribution



Red (90%)

Green (81%)

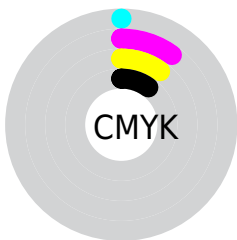
Blue (81%)



Red (90%)

Yellow (81%)

Blue (81%)

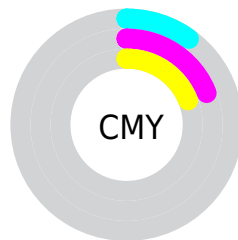


Cyan (0%)

Magenta (10%)

Yellow (10%)

Black (10%)



Cyan (10%)

Magenta (19%)

Yellow (19%)

# Brightness & Saturation Gradients

These gradients show how the Hex color E5CECE changes by changing the brightness by 10 percent. The first figure shows a shift by +10% for each color and the second figure -10%.

Similar to the brightness gradients but the following saturation gradients show a change of the Hex color E5CECE by changing the saturation by 10% instead.



 E5CECE

FFFFFF

 E5CECE

 C9B2B3

 AD9898

 937E7E

 796565

 604D4D

 483636

 312121

 1D0A0A

 000000

 E5CECE

 E5CECE

 E5B7B7

 E5E5E5

 E5A0A0

 E5FCFC

 E58989

 E5FFFF

 E57272

 E55C5C

 E54545

 E52E2E

 E51717

 E50000

# Harmonies

## Analogous

The Analogous color harmony consists of three colors that are next to each other on the color wheel.



E2CED6



E5CECE



E3CFC7

# Triad

The Triadic color harmony groups three colors that are evenly spaced from another and form a triangle on the color wheel.



E5CECE



CBD7C9



C8D5E3

# Complementary

The Complementary color scheme is a pair of colors which are on the opposite of each other on the color wheel.



E5CECE



CEE5E5

# Split Complementary

Split-complementary colors differ from the complementary color scheme. The scheme consists of three colors, the original color and two neighbors of the complement color.



C1D7DF



E5CECE



C3D8D0

# Square

The Square scheme is like the rectangle color scheme, but the four colors are evenly spaced on the color wheel.



E5CECE



D4D4C4



C0D8D8



D2D2E2

# Rectangle

The Rectangle color scheme consists of four colors that form a rectangle on the color wheel.



E5CECE



DFD1C4



C0D8D8



C5D6E2



# Sweetspot

The Sweet Spot groups the original color and five complimentary colors.



E5CECE



FFF7F7



E5CEE5



807A7A



000000



808080

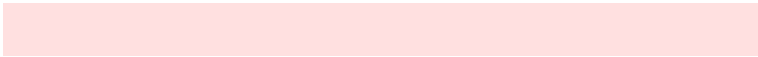


# Same Dimension

The Same Dimension uses a secret algorithm to generate beautiful new colors.



E5CECE



FFE0E0



E5DACE



736767



B30000



330000



# Inverse Universe

The Inverse Universe completely reimagines the original color for something new.



CEE5E5



E0FFFF



CEDAE5



677373



00B3B3



003333



# Previews

## White Background



This preview shows how the Hex color E5CECE looks on a white background.

## Color Contrast Check

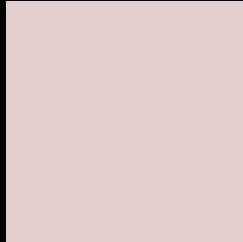
Large Text (above 18pt) WCAG AA × Fail

Any Text WCAG AA × Fail

Large Text (above 18pt) WCAG AAA × Fail

Any Text WCAG AAA × Fail

# Black Background



This preview shows how the Hex color E5CECE looks on a black background.

## Color Contrast Check

Large Text (above 18pt) WCAG AA ✓ Pass

Any Text WCAG AA ✓ Pass

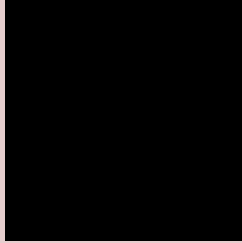
Large Text (above 18pt) WCAG AAA ✓ Pass

Any Text WCAG AAA ✓ Pass

If you want to check with other color combinations, try the [Color Contrast Checker](#).



## Hex E5CECE Background



This preview shows how black text looks on a background with the Hex color E5CECE.



This preview shows how white text looks on a background with the Hex color E5CECE.

# Color Blindness Simulation

Color vision deficiency is a very complex topic, and I could not describe the different causes any better than Wikipedia does, so if you want to learn more, you should check out their [article about color blindness](#).

## Dichromacy





# Trichromacy



**Original Color**  
E5CECE

**Protanomaly**  
DDD1CF

**Deuteranomaly**  
E8CDCE

**Tritanomaly**  
E6CDD7

# Monochromacy



**Original Color**  
E5CECE

**Achromatopsia**  
D5D5D5

**Achromatomaly**  
DBD2D2

# CSS Examples

## Text

The CSS property to change the color of the text to Hex E5CECE is called "color". The color property can be set on classes, ids or directly on the HTML element.

This example shows how text in the color #E5CECE looks like.

```
.text, #text, p{  
    color:#E5CECE  
}
```

If you want to add a text shadow in that color use the text-shadow property, you can generate a text shadow directly with our [CSS Text Shadow Generator](#).

Here you see how black text with a 4 pixel #E5CECE colored shadow looks like.

```
.shadow{ text-shadow: 4px 4px 2px #E5CECE
}
```

## Border

The CSS property to change the border of an element to Hex E5CECE is called "border". The border property can be set on classes, ids or directly on the HTML element.

This example shows the color as border, it can be applied via the CSS property "border" or "border-color".

```
.border, #border, table{ border:4px solid
#E5CECE }
```

If only the border color should be changed use the property `border-color`.

```
.border{ border-color:#E5CECE }
```

If you want to add a box shadow in that color use:

Here you see how a box with a 4 pixel #E5CECE colored shadow looks like.

```
.boxshadow{ -moz-box-shadow:4px 4px 4px  
4px #E5CECE; -webkit-box-shadow:4px 4px  
4px 4px #E5CECE; box-shadow:4px 4px 4px  
4px #E5CECE }
```

# Background

The CSS property to change the background color of an element to Hex E5CECE is called "background". The background property can be set on classes, ids or directly on the HTML element.

```
.background, #background, body{  
background:#E5CECE }
```

If only the background color should be changed can be used:

```
.background{ background-color:#E5CECE }
```

This example shows the color as background, it is applied via the CSS property "background".

To optimize and compress your CSS code, you can use our [online CSS compressor and optimizer](#) based on csstidy. If you want to create a linear or radial gradient as background or border, check our [CSS Gradient Generator](#).



Hey! You found this booklet interesting? Support Converting Colors with the new Membership Option!

The pro membership hides all ads, plus gives you double the colors in the color bucket, and more awesome pro features!

**[Learn more, Memberships starting at \\$2.50/m!](#)**

**Follow me  
on Twitter!**

@ConvertingColor