

Converting Colors

Hex(E5D1D6)

Have a look what the booklet for
Hex(E5D1D6) contains.

Hex(E5D1D6)	3
<i>Conversions</i>	4
<i>Details</i>	6
<i>Harmonies</i>	11
<i>Previews</i>	23
<i>Color Blindness Simulation</i>	26
<i>CSS Examples</i>	29

Color

Hex(E5D1D6)

Conversions

Conversions Part 1

Format	Color
Hex	E5D1D6
RGB	229, 209, 214
RGB Percent	90%, 82%, 84%
CMY	0.1020, 0.1804, 0.1608
CMYK	0.00, 0.09, 0.07, 0.10
HSL	345°, 28%, 86%
HSV	345°, 9%, 90%
XYZ	67.2512, 67.1140, 73.0281
YIQ	215.5500, 10.3150, 5.7950

Conversions

Conversions Part 2

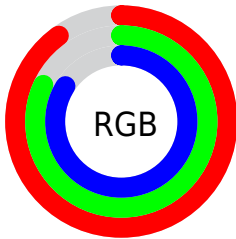
Format	Color
R _Y B	229, 209, 214
Decimal	15061462
CIE Lab	85.56, 7.78, 0.04
CIE LCh	86, 7.779, 0.280
Yxy	67.1140, 0.3243, 0.3236
Android (android.graphics.Color)	4293251542 (0xFFE5D1D6)
YUV	215.5500, -0.7642, 11.7956
Hunter-Lab	81.9231, 3.1662, 4.4938

Details

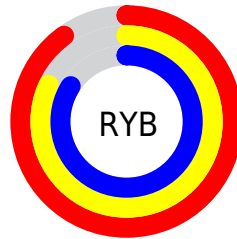
The Hex color **E5D1D6** is a light color, and the websafe version is hex **CCCCCC**. A complement of this color would be **D1E5E0**, and the grayscale version is **D8D8D8**.

A 20% lighter version of the original color is **FFFFFF**, and **AD9B9F** is the 20% darker color. If you saturate the color by 10%, you get **E5BAC5**, and if you desaturate by 10%, it is **E5E8E7**.

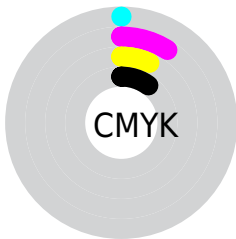
Distribution



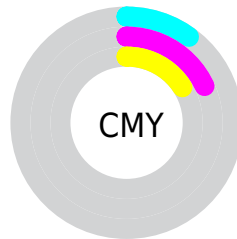
- Red (90%)
- Green (82%)
- Blue (84%)



- Red (90%)
- Yellow (82%)
- Blue (84%)



- Cyan (0%)
- Magenta (9%)
- Yellow (7%)
- Black (10%)



- Cyan (10%)
- Magenta (18%)
- Yellow (16%)

Brightness & Saturation Gradients

These gradients show how the Hex color E5D1D6 changes by changing the brightness by 10 percent. The first figure shows a shift by +10% for each color and the second figure -10%.

Similar to the brightness gradients but the following saturation gradients show a change of the Hex color E5D1D6 by changing the saturation by 10% instead.

 E5D1D6

FFFFFF

 E5D1D6

 C9B5BA

 AD9B9F

 938185

 79676C

 604F54

 48393D

 322327

 1D0E12

 000000

 E5D1D6

 E5D1D6

 E5BAC5

 E5E8E7

 E5A3B4

 E5FFF8

 E58CA2

 E5FFFF

 E57591

 E55E80

 E5486F

 E5315E

 E51A4D

 E5033B

Harmonies

Analogous

The Analogous color harmony consists of three colors that are next to each other on the color wheel.



E0D2DD



E5D1D6



E6D1CF

Triad

The Triadic color harmony groups three colors that are evenly spaced from another and form a triangle on the color wheel.



E5D1D6



D4D8C9



C7D9E2

Complementary

The Complementary color scheme is a pair of colors which are on the opposite of each other on the color wheel.



E5D1D6



D1E5E0

Split Complementary

Split-complementary colors differ from the complementary color scheme. The scheme consists of three colors, the original color and two neighbors of the complement color.



C4DADD



E5D1D6



CBD9CE

Square

The Square scheme is like the rectangle color scheme, but the four colors are evenly spaced on the color wheel.



E5D1D6



DCD5C7



C6DAD6



CFD6E4

Rectangle

The Rectangle color scheme consists of four colors that form a rectangle on the color wheel.



E5D1D6



E4D2CB



C6DAD6



C6D9E1

Sweetspot

The Sweet Spot groups the original color and five complimentary colors.



E5D1D6



FFF7F9



E0D1E5



807A7C



000000



808080

Same Dimension

The Same Dimension uses a secret algorithm to generate beautiful new colors.



E5D1D6



FFE6EC



E5D6D1



73676A



B3002D



33000D

Inverse Universe

The Inverse Universe completely reimagines the original color for something new.



E5D1D6



FFE6EC



D1E0E5



73676A



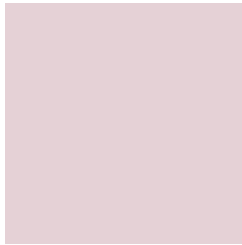
B3002D



33000D

Previews

White Background



This preview shows how the Hex color E5D1D6 looks on a white background.

Color Contrast Check

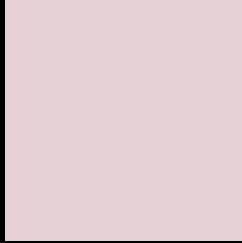
Large Text (above 18pt) WCAG AA × Fail

Any Text WCAG AA × Fail

Large Text (above 18pt) WCAG AAA × Fail

Any Text WCAG AAA × Fail

Black Background



This preview shows how the Hex color E5D1D6 looks on a black background.

Color Contrast Check

Large Text (above 18pt) WCAG AA ✓ Pass

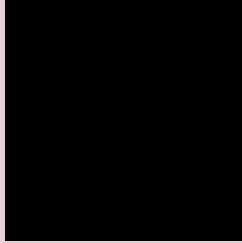
Any Text WCAG AA ✓ Pass

Large Text (above 18pt) WCAG AAA ✓ Pass

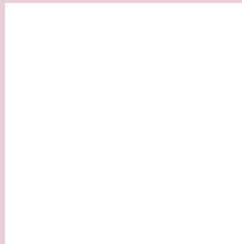
Any Text WCAG AAA ✓ Pass

If you want to check with other color combinations, try the [Color Contrast Checker](#).

Hex E5D1D6 Background



This preview shows how black text looks on a background with the Hex color E5D1D6.

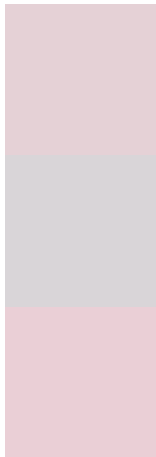


This preview shows how white text looks on a background with the Hex color E5D1D6.

Color Blindness Simulation

Color vision deficiency is a very complex topic, and I could not describe the different causes any better than Wikipedia does, so if you want to learn more, you should check out their [article about color blindness](#).

Dichromacy



Original Color
E5D1D6

Protanopia
D9D5D8

Deuteranopia
EACFD6



Tritanopia
E6CFE0

Trichromacy



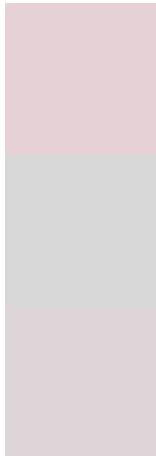
Original Color
E5D1D6

Protanomaly
DDD4D7

Deuteranomaly
E8D0D6

Tritanomaly
E6D0DC

Monochromacy



Original Color
E5D1D6

Achromatopsia
D8D8D8

Achromatomaly
DDD5D7

CSS Examples

Text

The CSS property to change the color of the text to Hex E5D1D6 is called "color". The color property can be set on classes, ids or directly on the HTML element.

This example shows how text in the color #E5D1D6 looks like.

```
.text, #text, p{  
    color:#E5D1D6  
}
```

If you want to add a text shadow in that color use the text-shadow property, you can generate a text shadow directly with our [CSS Text Shadow Generator](#).

Here you see how black text with a 4 pixel #E5D1D6 colored shadow looks like.

```
.shadow{ text-shadow: 4px 4px 2px #E5D1D6
}
```

Border

The CSS property to change the border of an element to Hex E5D1D6 is called "border". The border property can be set on classes, ids or directly on the HTML element.

This example shows the color as border, it can be applied via the CSS property "border" or "border-color".

```
.border, #border, table{ border:4px solid
#E5D1D6 }
```

If only the border color should be changed use the property `border-color`.

```
.border{ border-color:#E5D1D6 }
```

If you want to add a box shadow in that color use:

Here you see how a box with a 4 pixel #E5D1D6 colored shadow looks like.

```
.boxshadow{ -moz-box-shadow:4px 4px 4px  
4px #E5D1D6; -webkit-box-shadow:4px 4px  
4px 4px #E5D1D6; box-shadow:4px 4px 4px  
4px #E5D1D6 }
```

Background

The CSS property to change the background color of an element to Hex E5D1D6 is called "background". The background property can be set on classes, ids or directly on the HTML element.

```
.background, #background, body{  
background:#E5D1D6 }
```

If only the background color should be changed can be used:

```
.background{ background-color:#E5D1D6 }
```

This example shows the color as background, it is applied via the CSS property "background".

To optimize and compress your CSS code, you can use our [online CSS compressor and optimizer](#) based on csstidy. If you want to create a linear or radial gradient as background or border, check our [CSS Gradient Generator](#).

Hey! You found this booklet interesting? Support Converting Colors with the new Membership Option!

The pro membership hides all ads, plus gives you double the colors in the color bucket, and more awesome pro features!

[Learn more, Memberships starting at \\$2.50/m!](#)

**Follow me
on Twitter!**

@ConvertingColor