

Converting Colors

Hex(E62975)

Have a look what the booklet for
Hex(E62975) contains.

Hex(E62975)	3
<i>Conversions</i>	4
<i>Details</i>	6
<i>Harmonies</i>	11
<i>Previews</i>	23
<i>Color Blindness Simulation</i>	26
<i>CSS Examples</i>	29

Color

Hex(E62975)

Conversions

Conversions Part 1

Format	Color
Hex	E62975
RGB	230, 41, 117
RGB Percent	90%, 16%, 46%
CMY	0.0980, 0.8392, 0.5412
CMYK	0.00, 0.82, 0.49, 0.10
HSL	336°, 79%, 53%
HSV	336°, 82%, 90%
XYZ	36.6370, 19.6932, 18.6998
YIQ	106.1750, 88.2480, 63.7040

Conversions

Conversions Part 2

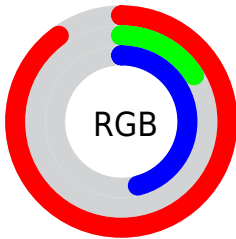
Format	Color
R_{YB}	230, 41, 117
Decimal	15083893
CIE _{Lab}	51.49, 72.99, 5.19
CIE _{LCh}	51, 73.170, 4.067
Yxy	19.6932, 0.4883, 0.2625
Android (android.graphics.Color)	4293273973 (0xFFE62975)
YUV	106.1750, 5.3367, 108.5945
Hunter-Lab	44.3770, 69.7068, 6.0800

Details

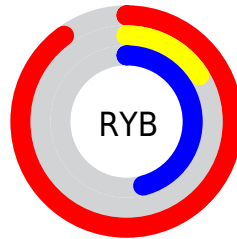
The Hex color **E62975** is a dark color, and the websafe version is hex **CC0066**. The color can be described as dark washed rose. A complement of this color would be **29E69A**, and the grayscale version is **6A6A6A**.

A 20% lighter version of the original color is **FF6CA9**, and **A80045** is the 20% darker color. If you saturate the color by 10%, you get **E61267**, and if you desaturate by 10%, it is **E64083**.

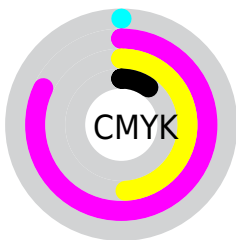
Distribution



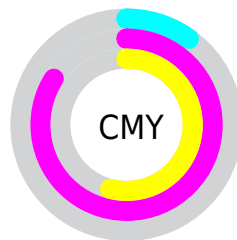
- Red (90%)
- Green (16%)
- Blue (46%)



- Red (90%)
- Yellow (16%)
- Blue (46%)



- Cyan (0%)
- Magenta (82%)
- Yellow (49%)
- Black (10%)



- Cyan (10%)
- Magenta (84%)
- Yellow (54%)

Brightness & Saturation Gradients

These gradients show how the Hex color E62975 changes by changing the brightness by 10 percent. The first figure shows a shift by +10% for each color and the second figure -10%.

Similar to the brightness gradients but the following saturation gradients show a change of the Hex color E62975 by changing the saturation by 10% instead.

 E62975

 E62975

FFFFFF

 C7005D

 FF6CA9

 A80045

 FF8AC4

 89002F

 FFA8E0

 6B001B

 FFC5FC

 4F0003

 FFE3FF

 2F0002

 000000

 E62975

 E62975

 E61267

 E64083

 E6005C

 E65791

 E66E9E

 E685AC

 E69CBA

 E6B3C8

 E6CAD5

 E6E1E3

 E6F8F1

Harmonies

Analogous

The Analogous color harmony consists of three colors that are next to each other on the color wheel.



CB41B3



E62975



DF4038

Triad

The Triadic color harmony groups three colors that are evenly spaced from another and form a triangle on the color wheel.



E62975



4B8A00



008FEC

Complementary

The Complementary color scheme is a pair of colors which are on the opposite of each other on the color wheel.



E62975



29E69A

Split Complementary

Split-complementary colors differ from the complementary color scheme. The scheme consists of three colors, the original color and two neighbors of the complement color.



0095C0



E62975



009240

Square

The Square scheme is like the rectangle color scheme, but the four colors are evenly spaced on the color wheel.



E62975



8D7B00



009682



0080F9

Rectangle

The Rectangle color scheme consists of four colors that form a rectangle on the color wheel.



E62975



CC5708



009682



0092E0

Sweetspot

The Sweet Spot groups the original color and five complimentary colors.



E62975



FFBFD9



9729E6



805969



000000



808080

Same Dimension

The Same Dimension uses a secret algorithm to generate beautiful new colors.



E62975



FF0368



E63929



73676C



B30048



330015

Inverse Universe

The Inverse Universe completely reimagines the original color for something new.



E62975



FF0368



29D6E6



73676C



B30048



330015

Previews

White Background



This preview shows how the Hex color E62975 looks on a white background.

Color Contrast Check

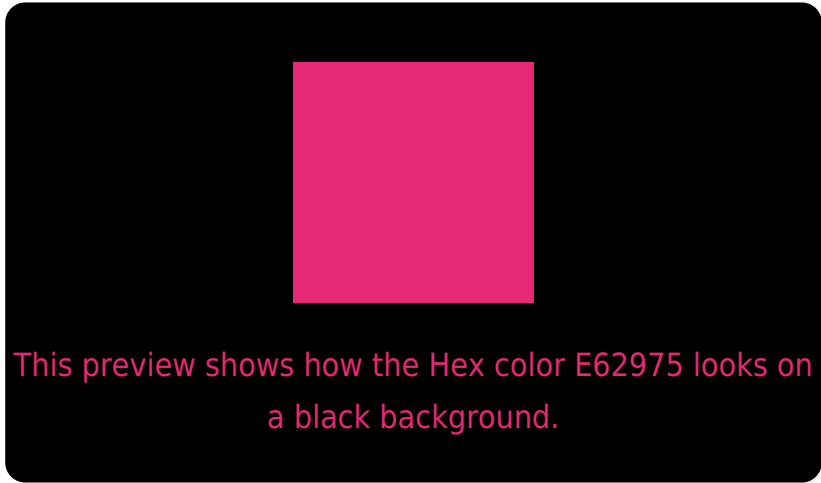
Large Text (above 18pt) WCAG AA ✓ Pass

Any Text WCAG AA × Fail

Large Text (above 18pt) WCAG AAA × Fail

Any Text WCAG AAA × Fail

Black Background



Color Contrast Check

Large Text (above 18pt) WCAG AA ✓ Pass

Any Text WCAG AA ✓ Pass

Large Text (above 18pt) WCAG AAA ✓ Pass

Any Text WCAG AAA × Fail

If you want to check with other color combinations, try the [Color Contrast Checker](#).

Hex E62975 Background



This preview shows how black text looks on a background with the Hex color E62975.

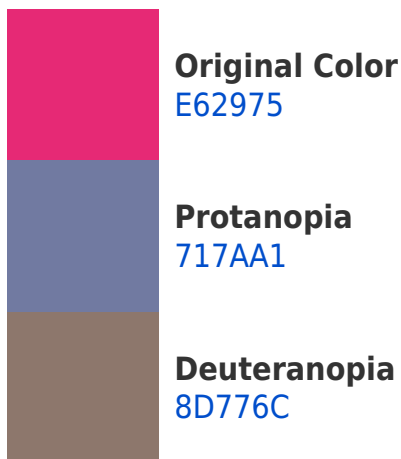


This preview shows how white text looks on a background with the Hex color E62975.

Color Blindness Simulation

Color vision deficiency is a very complex topic, and I could not describe the different causes any better than Wikipedia does, so if you want to learn more, you should check out their [article about color blindness](#).

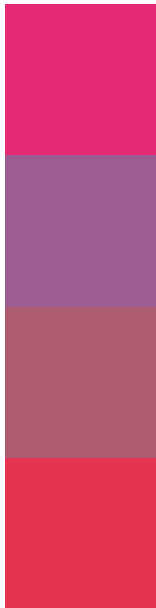
Dichromacy





Tritanopia
E33A3C

Trichromacy



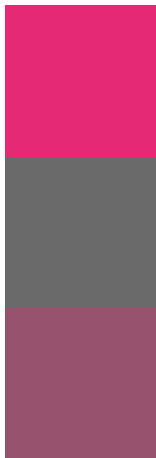
Original Color
E62975

Protanomaly
9C5D91

Deuteranomaly
AD5B6F

Tritanomaly
E43451

Monochromacy



Original Color
E62975

Achromatopsia
6A6A6A

Achromatomaly
97526E

CSS Examples

Text

The CSS property to change the color of the text to Hex E62975 is called "color". The color property can be set on classes, ids or directly on the HTML element.

This example shows how text in the color #E62975 looks like.

```
.text, #text, p{  
    color:#E62975  
}
```

If you want to add a text shadow in that color use the text-shadow property, you can generate a text shadow directly with our [CSS Text Shadow Generator](#).

Here you see how black text with a 4 pixel #E62975 colored shadow looks like.

```
.shadow{ text-shadow: 4px 4px 2px #E62975
}
```

Border

The CSS property to change the border of an element to Hex E62975 is called "border". The border property can be set on classes, ids or directly on the HTML element.

This example shows the color as border, it can be applied via the CSS property "border" or "border-color".

```
.border, #border, table{ border:4px solid
#E62975 }
```

If only the border color should be changed use the property `border-color`.

```
.border{ border-color:#E62975 }
```

If you want to add a box shadow in that color use:

Here you see how a box with a 4 pixel #E62975 colored shadow looks like.

```
.boxshadow{ -moz-box-shadow:4px 4px 4px  
4px #E62975; -webkit-box-shadow:4px 4px  
4px 4px #E62975; box-shadow:4px 4px 4px  
4px #E62975 }
```

Background

The CSS property to change the background color of an element to Hex E62975 is called "background". The background property can be set on classes, ids or directly on the HTML element.

```
.background, #background, body{  
background:#E62975 }
```

If only the background color should be changed can be used:

```
.background{ background-color:#E62975 }
```

This example shows the color as background, it is applied via the CSS property "background".

To optimize and compress your CSS code, you can use our [online CSS compressor and optimizer](#) based on csstidy. If you want to create a linear or radial gradient as background or border, check our [CSS Gradient Generator](#).

Hey! You found this booklet interesting? Support Converting Colors with the new Membership Option!

The pro membership hides all ads, plus gives you double the colors in the color bucket, and more awesome pro features!

[Learn more, Memberships starting at \\$2.50/m!](#)

**Follow me
on Twitter!**

@ConvertingColor