

Converting Colors

Hex(E63C6E)

Have a look what the booklet for
Hex(E63C6E) contains.

Hex(E63C6E)	3
<i>Conversions</i>	4
<i>Details</i>	6
<i>Harmonies</i>	11
<i>Previews</i>	23
<i>Color Blindness Simulation</i>	26
<i>CSS Examples</i>	29

Color

Hex(E63C6E)

Conversions

Conversions Part 1

Format	Color
Hex	E63C6E
RGB	230, 60, 110
RGB Percent	90%, 24%, 43%
CMY	0.0980, 0.7647, 0.5686
CMYK	0.00, 0.74, 0.52, 0.10
HSL	342°, 77%, 57%
HSV	342°, 74%, 90%
XYZ	37.0635, 21.1805, 16.8866
YIQ	116.5300, 85.2700, 51.5900

Conversions

Conversions Part 2

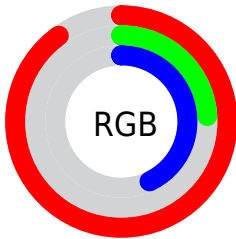
Format	Color
R_{YB}	230, 60, 110
Decimal	15088750
CIE Lab	53.15, 67.25, 11.76
CIE LCh	53, 68.267, 9.923
Yxy	21.1805, 0.4933, 0.2819
Android (android.graphics.Color)	4293278830 (0xFFE63C6E)
YUV	116.5300, -3.2193, 99.5132
Hunter-Lab	46.0223, 63.2137, 10.4607

Details

The Hex color **E63C6E** is a dark color, and the websafe version is hex **CC3366**. The color can be described as dark washed rose. A complement of this color would be **3CE6B4**, and the grayscale version is **757575**.

A 20% lighter version of the original color is **FF78A1**, and **A8003F** is the 20% darker color. If you saturate the color by 10%, you get **E6255E**, and if you desaturate by 10%, it is **E6537E**.

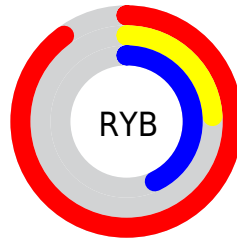
Distribution



Red (90%)

Green (24%)

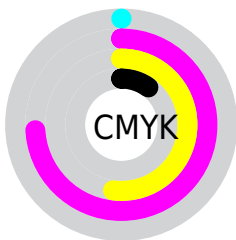
Blue (43%)



Red (90%)

Yellow (24%)

Blue (43%)

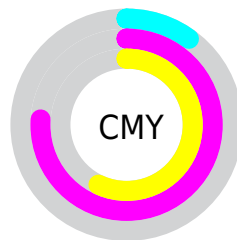


Cyan (0%)

Magenta (74%)

Yellow (52%)

Black (10%)



Cyan (10%)

Magenta (76%)

Yellow (57%)

Brightness & Saturation Gradients

These gradients show how the Hex color E63C6E changes by changing the brightness by 10 percent. The first figure shows a shift by +10% for each color and the second figure -10%.

Similar to the brightness gradients but the following saturation gradients show a change of the Hex color E63C6E by changing the saturation by 10% instead.

 E63C6E

 E63C6E

FFFFFF

 C71356

 FF78A1

 A8003F

 FF95BC

 8A0029

 FFB3D8

 6C0016

 FFD0F4

 4F0002

 FFEEFF

 300002

 000000

 E63C6E

 E63C6E

 E6255E

 E6537E

 E60E4E

 E66A8E

 E60044

 E6819F

 E698AF

 E6AFBF

 E6C6CF

 E6DDE0

 E6F4F0

 E6FFFF

Harmonies

Analogous

The Analogous color harmony consists of three colors that are next to each other on the color wheel.



D247A9



E63C6E



DB5136

Triad

The Triadic color harmony groups three colors that are evenly spaced from another and form a triangle on the color wheel.



E63C6E



459014



0090EE

Complementary

The Complementary color scheme is a pair of colors which are on the opposite of each other on the color wheel.



E63C6E



3CE6B4

Split Complementary

Split-complementary colors differ from the complementary color scheme. The scheme consists of three colors, the original color and two neighbors of the complement color.



0098C9



E63C6E



009754

Square

The Square scheme is like the rectangle color scheme, but the four colors are evenly spaced on the color wheel.



E63C6E



878300



009991



0080F4

Rectangle

The Rectangle color scheme consists of four colors that form a rectangle on the color wheel.



E63C6E



C6640C



009991



0094E5

Sweetspot

The Sweet Spot groups the original color and five complimentary colors.



E63C6E



FFC7D7



B33CE6



805E68



000000



808080

Same Dimension

The Same Dimension uses a secret algorithm to generate beautiful new colors.



E63C6E



FF1C5F



E65E3C



73676B



B30034



33000F

Inverse Universe

The Inverse Universe completely reimagines the original color for something new.



E63C6E



FF1C5F



3CC4E6



73676B



B30035



33000F

Previews

White Background



This preview shows how the Hex color E63C6E looks on a white background.

Color Contrast Check

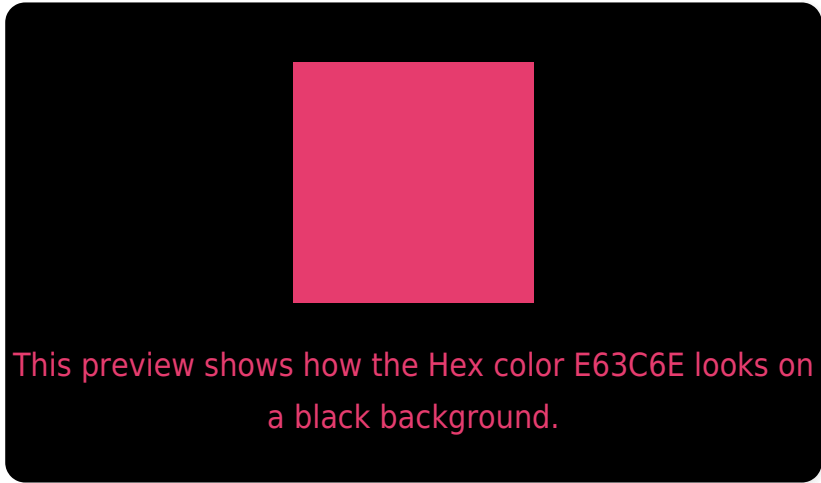
Large Text (above 18pt) WCAG AA ✓ Pass

Any Text WCAG AA × Fail

Large Text (above 18pt) WCAG AAA × Fail

Any Text WCAG AAA × Fail

Black Background



Color Contrast Check

Large Text (above 18pt) WCAG AA ✓ Pass

Any Text WCAG AA ✓ Pass

Large Text (above 18pt) WCAG AAA ✓ Pass

Any Text WCAG AAA × Fail

If you want to check with other color combinations, try the [Color Contrast Checker](#).

Hex E63C6E Background



This preview shows how black text looks on a background with the Hex color E63C6E.

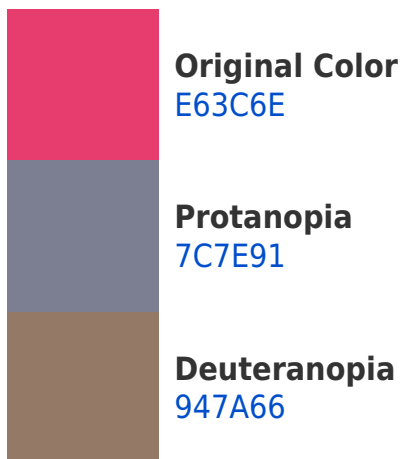



This preview shows how white text looks on a background with the Hex color E63C6E.

Color Blindness Simulation

Color vision deficiency is a very complex topic, and I could not describe the different causes any better than Wikipedia does, so if you want to learn more, you should check out their [article about color blindness](#).

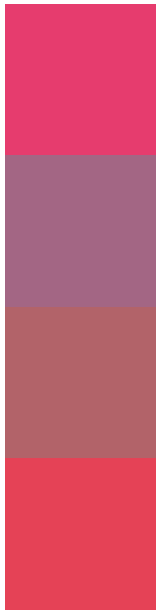
Dichromacy





Tritanopia
E44548

Trichromacy



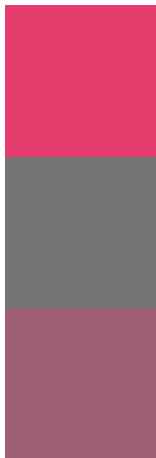
Original Color
E63C6E

Protanomaly
A36684

Deuteranomaly
B26369

Tritanomaly
E54256

Monochromacy



Original Color
E63C6E

Achromatopsia
757575

Achromatomaly
9E6072

CSS Examples

Text

The CSS property to change the color of the text to Hex E63C6E is called "color". The color property can be set on classes, ids or directly on the HTML element.

This example shows how text in the color #E63C6E looks like.

```
.text, #text, p{  
    color:#E63C6E  
}
```

If you want to add a text shadow in that color use the text-shadow property, you can generate a text shadow directly with our [CSS Text Shadow Generator](#).

Here you see how black text with a 4 pixel #E63C6E colored shadow looks like.

```
.shadow{ text-shadow: 4px 4px 2px #E63C6E
}
```

Border

The CSS property to change the border of an element to Hex E63C6E is called "border". The border property can be set on classes, ids or directly on the HTML element.

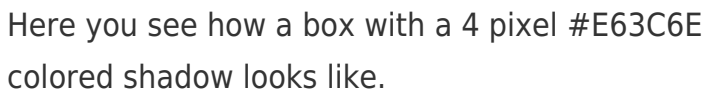
This example shows the color as border, it can be applied via the CSS property "border" or "border-color".

```
.border, #border, table{ border:4px solid
#E63C6E }
```

If only the border color should be changed use the property `border-color`.

```
.border{ border-color:#E63C6E }
```

If you want to add a box shadow in that color use:



Here you see how a box with a 4 pixel #E63C6E colored shadow looks like.

```
.boxshadow{ -moz-box-shadow:4px 4px 4px  
4px #E63C6E; -webkit-box-shadow:4px 4px  
4px 4px #E63C6E; box-shadow:4px 4px 4px  
4px #E63C6E }
```

Background

The CSS property to change the background color of an element to Hex E63C6E is called "background". The background property can be set on classes, ids or directly on the HTML element.

```
.background, #background, body{  
background:#E63C6E }
```

If only the background color should be changed can be used:

```
.background{ background-color:#E63C6E }
```

This example shows the color as background, it is applied via the CSS property "background".

To optimize and compress your CSS code, you can use our [online CSS compressor and optimizer](#) based on csstidy. If you want to create a linear or radial gradient as background or border, check our [CSS Gradient Generator](#).

Hey! You found this booklet interesting? Support Converting Colors with the new Membership Option!

The pro membership hides all ads, plus gives you double the colors in the color bucket, and more awesome pro features!

[Learn more, Memberships starting at \\$2.50/m!](#)

**Follow me
on Twitter!**

@ConvertingColor