

Converting Colors

Hex(E63F84)

Have a look what the booklet for
Hex(E63F84) contains.

Hex(E63F84)	3
<i>Conversions</i>	4
<i>Details</i>	6
<i>Harmonies</i>	11
<i>Previews</i>	23
<i>Color Blindness Simulation</i>	26
<i>CSS Examples</i>	29

Color

Hex(E63F84)

Conversions

Conversions Part 1

Format	Color
Hex	E63F84
RGB	230, 63, 132
RGB Percent	90%, 25%, 52%
CMY	0.0980, 0.7529, 0.4824
CMYK	0.00, 0.73, 0.43, 0.10
HSL	335°, 77%, 57%
HSV	335°, 73%, 90%
XYZ	38.5755, 22.0440, 24.0515
YIQ	120.7990, 77.3830, 56.8630

Conversions

Conversions Part 2

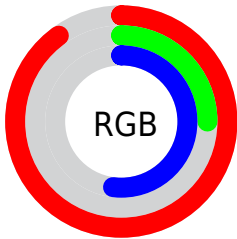
Format	Color
R_{YB}	230, 63, 132
Decimal	15089540
CIE _{Lab}	54.07, 68.15, -0.08
CIE _{LCh}	54, 68.151, 359.930
Yxy	22.0440, 0.4556, 0.2603
Android (android.graphics.Color)	4293279620 (0xFFE63F84)
YUV	120.7990, 5.5221, 95.7693
Hunter-Lab	46.9510, 64.4935, 2.4932

Details

The Hex color **E63F84** is a dark color, and the websafe version is hex **CC0066**. The color can be described as middle washed rose. A complement of this color would be **3FE6A1**, and the grayscale version is **797979**.

A 20% lighter version of the original color is **FF7BB9**, and **A90053** is the 20% darker color. If you saturate the color by 10%, you get **E62877**, and if you desaturate by 10%, it is **E65691**.

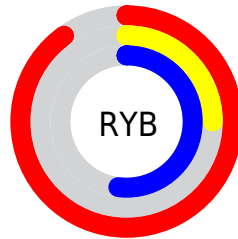
Distribution



Red (90%)

Green (25%)

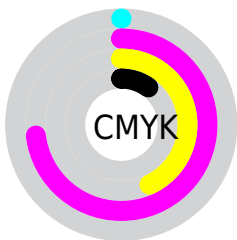
Blue (52%)



Red (90%)

Yellow (25%)

Blue (52%)

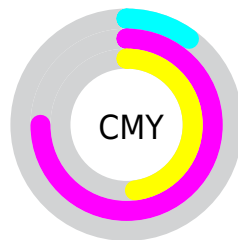


Cyan (0%)

Magenta (73%)

Yellow (43%)

Black (10%)



Cyan (10%)

Magenta (75%)

Yellow (48%)

Brightness & Saturation Gradients

These gradients show how the Hex color E63F84 changes by changing the brightness by 10 percent. The first figure shows a shift by +10% for each color and the second figure -10%.

Similar to the brightness gradients but the following saturation gradients show a change of the Hex color E63F84 by changing the saturation by 10% instead.

 E63F84

 E63F84

FFFFFF

 C7186B

 FF7BB9

 A90053

 FF98D4

 8B003C

 FFB5F1

 6D0027

 FFD3FF

 510012

 FFF1FF

 340002

 000000

 E63F84

 E63F84

 E62877

 E65691

 E61169

 E66D9F

 E6005F

 E684AC

 E69BBA

 E6B2C7

 E6C9D5

 E6E0E2

 E6F7F0

 E6FFFD

Harmonies

Analogous

The Analogous color harmony consists of three colors that are next to each other on the color wheel.



C754BD



E63F84



E44B4A

Triad

The Triadic color harmony groups three colors that are evenly spaced from another and form a triangle on the color wheel.



E63F84



618F00



0096E7

Complementary

The Complementary color scheme is a pair of colors which are on the opposite of each other on the color wheel.



E63F84



3FE6A1

Split Complementary

Split-complementary colors differ from the complementary color scheme. The scheme consists of three colors, the original color and two neighbors of the complement color.



009BBB



E63F84



009742

Square

The Square scheme is like the rectangle color scheme, but the four colors are evenly spaced on the color wheel.



E63F84



9C7F00



009B7F



0089F8

Rectangle

The Rectangle color scheme consists of four colors that form a rectangle on the color wheel.



E63F84



D45D26



009B7F



0098DB

Sweetspot

The Sweet Spot groups the original color and five complimentary colors.



E63F84



FFC7DE



A03FE6



805E6C



000000



808080

Same Dimension

The Same Dimension uses a secret algorithm to generate beautiful new colors.



E63F84



FF217D



E64D3F



73676C



B3004A



330015

Inverse Universe

The Inverse Universe completely reimagines the original color for something new.



E63F84



FF217D



3FD8E6



73676C



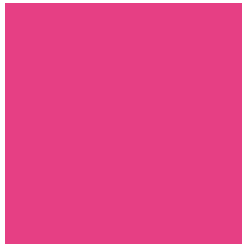
B3004A



330015

Previews

White Background



This preview shows how the Hex color E63F84 looks on a white background.

Color Contrast Check

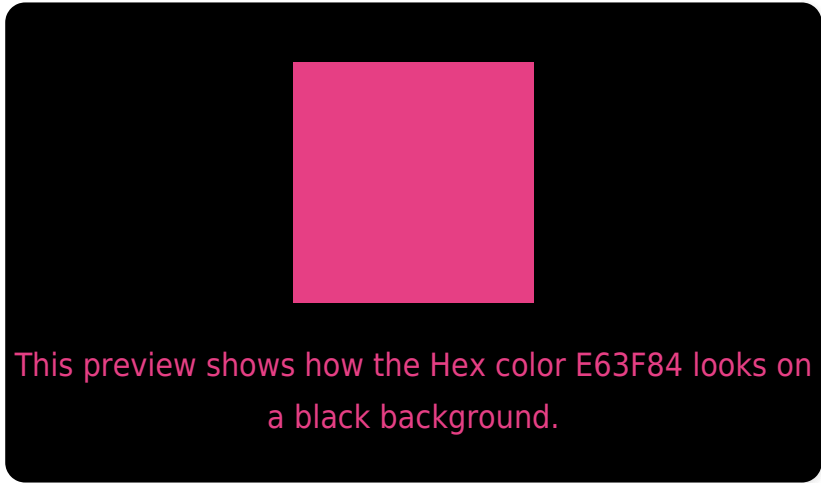
Large Text (above 18pt) WCAG AA ✓ Pass

Any Text WCAG AA × Fail

Large Text (above 18pt) WCAG AAA × Fail

Any Text WCAG AAA × Fail

Black Background



Color Contrast Check

Large Text (above 18pt) WCAG AA ✓ Pass

Any Text WCAG AA ✓ Pass

Large Text (above 18pt) WCAG AAA ✓ Pass

Any Text WCAG AAA × Fail

If you want to check with other color combinations, try the [Color Contrast Checker](#).

Hex E63F84 Background



This preview shows how black text looks on a background with the Hex color E63F84.

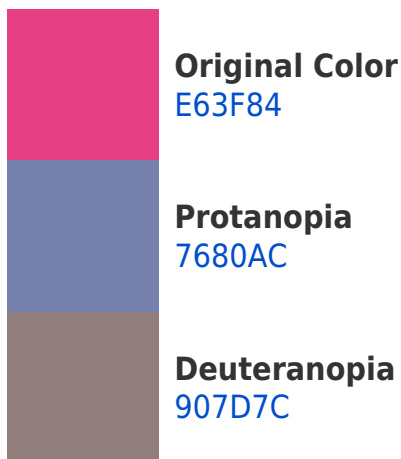


This preview shows how white text looks on a background with the Hex color E63F84.

Color Blindness Simulation

Color vision deficiency is a very complex topic, and I could not describe the different causes any better than Wikipedia does, so if you want to learn more, you should check out their [article about color blindness](#).

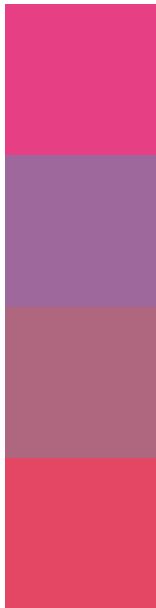
Dichromacy





Tritanopia
E34C50

Trichromacy



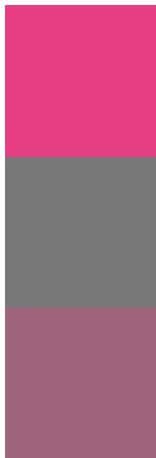
Original Color
E63F84

Protanomaly
9F689D

Deuteranomaly
AF667F

Tritanomaly
E44763

Monochromacy



Original Color
E63F84

Achromatopsia
797979

Achromatomaly
A1647D

CSS Examples

Text

The CSS property to change the color of the text to Hex E63F84 is called "color". The color property can be set on classes, ids or directly on the HTML element.

This example shows how text in the color #E63F84 looks like.

```
.text, #text, p{  
    color:#E63F84  
}
```

If you want to add a text shadow in that color use the text-shadow property, you can generate a text shadow directly with our [CSS Text Shadow Generator](#).

Here you see how black text with a 4 pixel #E63F84 colored shadow looks like.

```
.shadow{ text-shadow: 4px 4px 2px #E63F84
}
```

Border

The CSS property to change the border of an element to Hex E63F84 is called "border". The border property can be set on classes, ids or directly on the HTML element.

This example shows the color as border, it can be applied via the CSS property "border" or "border-color".

```
.border, #border, table{ border:4px solid
#E63F84 }
```

If only the border color should be changed use the property `border-color`.

```
.border{ border-color:#E63F84 }
```

If you want to add a box shadow in that color use:

Here you see how a box with a 4 pixel #E63F84 colored shadow looks like.

```
.boxshadow{ -moz-box-shadow:4px 4px 4px  
4px #E63F84; -webkit-box-shadow:4px 4px  
4px 4px #E63F84; box-shadow:4px 4px 4px  
4px #E63F84 }
```

Background

The CSS property to change the background color of an element to Hex E63F84 is called "background". The background property can be set on classes, ids or directly on the HTML element.

```
.background, #background, body{  
background:#E63F84 }
```

If only the background color should be changed can be used:

```
.background{ background-color:#E63F84 }
```

This example shows the color as background, it is applied via the CSS property "background".

To optimize and compress your CSS code, you can use our [online CSS compressor and optimizer](#) based on csstidy. If you want to create a linear or radial gradient as background or border, check our [CSS Gradient Generator](#).

Hey! You found this booklet interesting? Support Converting Colors with the new Membership Option!

The pro membership hides all ads, plus gives you double the colors in the color bucket, and more awesome pro features!

[Learn more, Memberships starting at \\$2.50/m!](#)

**Follow me
on Twitter!**

@ConvertingColor