

Converting Colors

Hex(E6476D)

Have a look what the booklet for
Hex(E6476D) contains.

Hex(E6476D)	3
<i>Conversions</i>	4
<i>Details</i>	6
<i>Harmonies</i>	11
<i>Previews</i>	23
<i>Color Blindness Simulation</i>	26
<i>CSS Examples</i>	29

Color

Hex(E6476D)

Conversions

Conversions Part 1

Format	Color
Hex	E6476D
RGB	230, 71, 109
RGB Percent	90%, 28%, 43%
CMY	0.0980, 0.7216, 0.5725
CMYK	0.00, 0.69, 0.53, 0.10
HSL	346°, 76%, 59%
HSV	346°, 69%, 90%
XYZ	37.6467, 22.4336, 16.8139
YIQ	122.8730, 82.5660, 45.5260

Conversions

Conversions Part 2

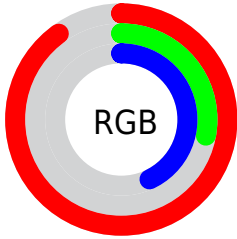
Format	Color
R_{YB}	230, 71, 109
Decimal	15091565
CIE _{Lab}	54.48, 63.39, 14.22
CIE _{LCh}	54, 64.963, 12.648
Yxy	22.4336, 0.4896, 0.2917
Android (android.graphics.Color)	4293281645 (0xFFE6476D)
YUV	122.8730, -6.8394, 93.9504
Hunter-Lab	47.3641, 58.9909, 12.1074

Details

The Hex color **E6476D** is a dark color, and the websafe version is hex **CC3366**. The color can be described as middle muted rose. A complement of this color would be **47E6C0**, and the grayscale version is **7B7B7B**.

A 20% lighter version of the original color is **FF81A0**, and **A8003E** is the 20% darker color. If you saturate the color by 10%, you get **E6305B**, and if you desaturate by 10%, it is **E65E7F**.

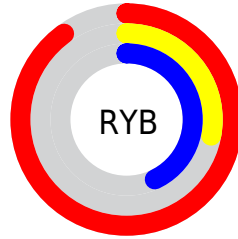
Distribution



Red (90%)

Green (28%)

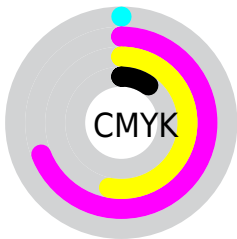
Blue (43%)



Red (90%)

Yellow (28%)

Blue (43%)

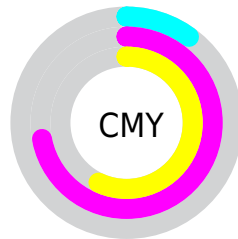


Cyan (0%)

Magenta (69%)

Yellow (53%)

Black (10%)



Cyan (10%)

Magenta (72%)

Yellow (57%)

Brightness & Saturation Gradients

These gradients show how the Hex color E6476D changes by changing the brightness by 10 percent. The first figure shows a shift by +10% for each color and the second figure -10%.

Similar to the brightness gradients but the following saturation gradients show a change of the Hex color E6476D by changing the saturation by 10% instead.

 E6476D

 E6476D

FFFFFF

 C72655

 FF81A0

 A8003E

 FF9EBB

 8A0029

 FFBBD7

 6C0015

 FFD8F3

 4F0002

 FFF5FF

 320002

 000000

 E6476D

 E6476D

 E6305B

 E65E7F

 E6194A

 E67590

 E60238

 E68CA2

 E60037

 E6A3B3

 E6BAC5

 E6D1D6

 E6E8E8

 E6FFF9

 E6FFFF

Harmonies

Analogous

The Analogous color harmony consists of three colors that are next to each other on the color wheel.



D64EA5



E6476D



D95A38

Triad

The Triadic color harmony groups three colors that are evenly spaced from another and form a triangle on the color wheel.



E6476D



459326



0092EE

Complementary

The Complementary color scheme is a pair of colors which are on the opposite of each other on the color wheel.



E6476D



47E6C0

Split Complementary

Split-complementary colors differ from the complementary color scheme. The scheme consists of three colors, the original color and two neighbors of the complement color.



009ACE



E6476D



009A5F

Square

The Square scheme is like the rectangle color scheme, but the four colors are evenly spaced on the color wheel.



E6476D



868700



009C99



2581F1

Rectangle

The Rectangle color scheme consists of four colors that form a rectangle on the color wheel.



E6476D



C46C15



009C99



0095E6

Sweetspot

The Sweet Spot groups the original color and five complimentary colors.



E6476D



FFC9D6



BE47E6



806067



000000



808080

Same Dimension

The Same Dimension uses a secret algorithm to generate beautiful new colors.



E6476D



FF2B5E



E66F47



73676A



B3002B



33000C

Inverse Universe

The Inverse Universe completely reimagines the original color for something new.



E6476D



FF2B5E



47BEE6



73676A



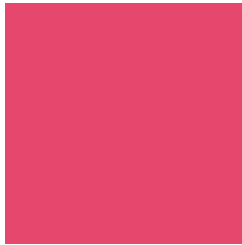
B3002B



33000C

Previews

White Background



This preview shows how the Hex color E6476D looks on a white background.

Color Contrast Check

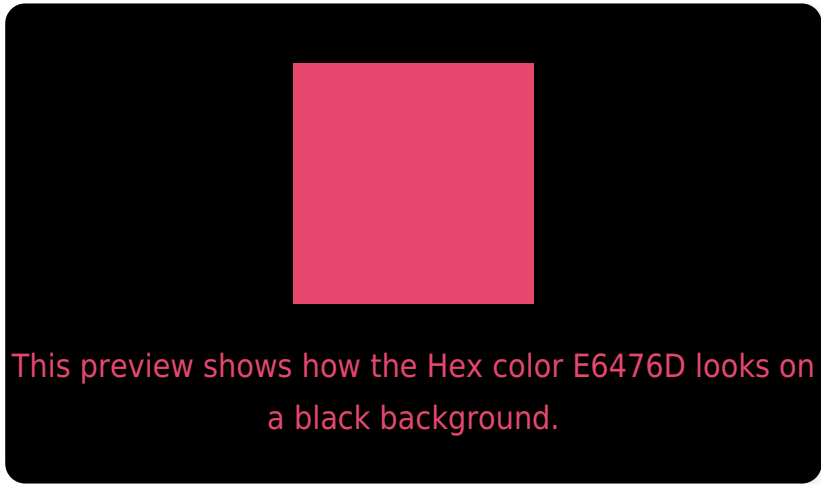
Large Text (above 18pt) WCAG AA ✓ Pass

Any Text WCAG AA × Fail

Large Text (above 18pt) WCAG AAA × Fail

Any Text WCAG AAA × Fail

Black Background



Color Contrast Check

Large Text (above 18pt) WCAG AA ✓ Pass

Any Text WCAG AA ✓ Pass

Large Text (above 18pt) WCAG AAA ✓ Pass

Any Text WCAG AAA × Fail

If you want to check with other color combinations, try the [Color Contrast Checker](#).

Hex E6476D Background



This preview shows how black text looks on a background with the Hex color E6476D.

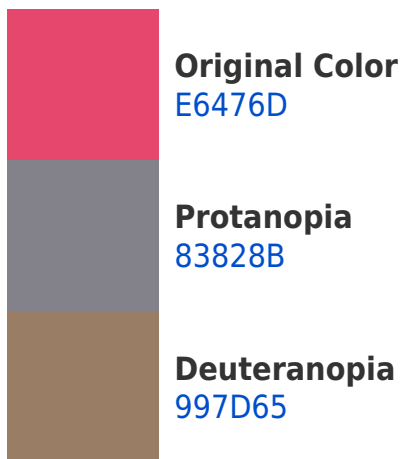


This preview shows how white text looks on a background with the Hex color E6476D.

Color Blindness Simulation

Color vision deficiency is a very complex topic, and I could not describe the different causes any better than Wikipedia does, so if you want to learn more, you should check out their [article about color blindness](#).

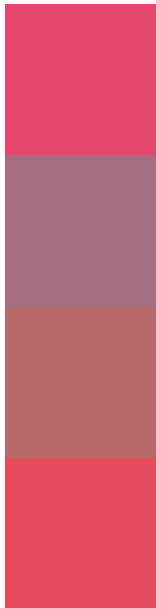
Dichromacy





Tritanopia
E44D51

Trichromacy



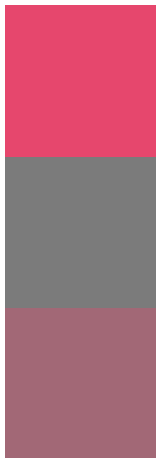
Original Color
E6476D

Protanomaly
A76D80

Deuteranomaly
B56968

Tritanomaly
E54B5B

Monochromacy



Original Color
E6476D

Achromatopsia
7B7B7B

Achromatomaly
A26876

CSS Examples

Text

The CSS property to change the color of the text to Hex E6476D is called "color". The color property can be set on classes, ids or directly on the HTML element.

This example shows how text in the color #E6476D looks like.

```
.text, #text, p{  
    color:#E6476D  
}
```

If you want to add a text shadow in that color use the text-shadow property, you can generate a text shadow directly with our [CSS Text Shadow Generator](#).

Here you see how black text with a 4 pixel #E6476D colored shadow looks like.

```
.shadow{ text-shadow: 4px 4px 2px #E6476D
}
```

Border

The CSS property to change the border of an element to Hex E6476D is called "border". The border property can be set on classes, ids or directly on the HTML element.

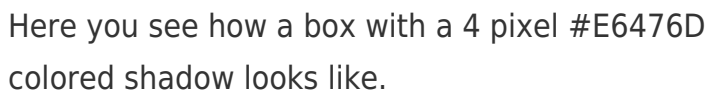
This example shows the color as border, it can be applied via the CSS property "border" or "border-color".

```
.border, #border, table{ border:4px solid
#E6476D }
```

If only the border color should be changed use the property `border-color`.

```
.border{ border-color:#E6476D }
```

If you want to add a box shadow in that color use:



Here you see how a box with a 4 pixel #E6476D colored shadow looks like.

```
.boxshadow{ -moz-box-shadow:4px 4px 4px  
4px #E6476D; -webkit-box-shadow:4px 4px  
4px 4px #E6476D; box-shadow:4px 4px 4px  
4px #E6476D }
```

Background

The CSS property to change the background color of an element to Hex E6476D is called "background". The background property can be set on classes, ids or directly on the HTML element.

```
.background, #background, body{  
background:#E6476D }
```

If only the background color should be changed can be used:

```
.background{ background-color:#E6476D }
```

This example shows the color as background, it is applied via the CSS property "background".

To optimize and compress your CSS code, you can use our [online CSS compressor and optimizer](#) based on csstidy. If you want to create a linear or radial gradient as background or border, check our [CSS Gradient Generator](#).

Hey! You found this booklet interesting? Support Converting Colors with the new Membership Option!

The pro membership hides all ads, plus gives you double the colors in the color bucket, and more awesome pro features!

[Learn more, Memberships starting at \\$2.50/m!](#)

**Follow me
on Twitter!**

@ConvertingColor