

Converting Colors

Hex(E64C7C)

Have a look what the booklet for
Hex(E64C7C) contains.

Hex(E64C7C)	3
<i>Conversions</i>	4
<i>Details</i>	6
<i>Harmonies</i>	11
<i>Previews</i>	23
<i>Color Blindness Simulation</i>	26
<i>CSS Examples</i>	29

Color

Hex(E64C7C)

Conversions

Conversions Part 1

Format	Color
Hex	E64C7C
RGB	230, 76, 124
RGB Percent	90%, 30%, 49%
CMY	0.0980, 0.7020, 0.5137
CMYK	0.00, 0.67, 0.46, 0.10
HSL	341°, 75%, 60%
HSV	341°, 67%, 90%
XYZ	38.8557, 23.4471, 21.5466
YIQ	127.5180, 76.3760, 47.5760

Conversions

Conversions Part 2

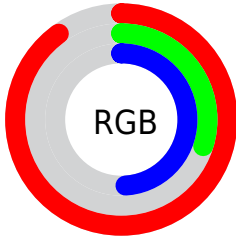
Format	Color
R_{YB}	230, 76, 124
Decimal	15092860
CIE _{Lab}	55.53, 62.77, 6.78
CIE _{LCh}	56, 63.133, 6.165
Yxy	23.4471, 0.4634, 0.2796
Android (android.graphics.Color)	4293282940 (0xFFE64C7C)
YUV	127.5180, -1.7344, 89.8767
Hunter-Lab	48.4222, 58.4957, 7.5131

Details

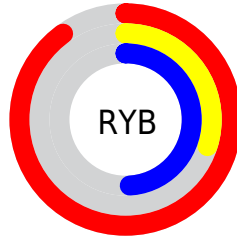
The Hex color **E64C7C** is a dark color, and the websafe version is hex **CC3366**. The color can be described as middle muted rose. A complement of this color would be **4CE6B6**, and the grayscale version is **7F7F7F**.

A 20% lighter version of the original color is **FF85B0**, and **A9004C** is the 20% darker color. If you saturate the color by 10%, you get **E6356C**, and if you desaturate by 10%, it is **E6638C**.

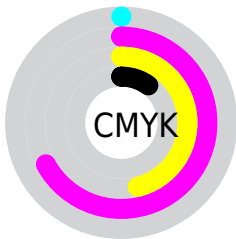
Distribution



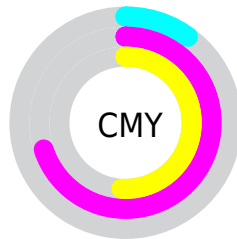
- Red (90%)
- Green (30%)
- Blue (49%)



- Red (90%)
- Yellow (30%)
- Blue (49%)



- Cyan (0%)
- Magenta (67%)
- Yellow (46%)
- Black (10%)



- Cyan (10%)
- Magenta (70%)
- Yellow (51%)

Brightness & Saturation Gradients

These gradients show how the Hex color E64C7C changes by changing the brightness by 10 percent. The first figure shows a shift by +10% for each color and the second figure -10%.

Similar to the brightness gradients but the following saturation gradients show a change of the Hex color E64C7C by changing the saturation by 10% instead.

 E64C7C

 E64C7C

FFFFFF

 C72C63

 FF85B0

 A9004C

 FFA2CC

 8B0035

 FFBFE8

 6E0020

 FFDCFF

 510008

 FFFAFF

 350002

 010000

 000000

 E64C7C

 E64C7C

 E6356C

 E6638C

 E61E5C

 E67A9C

 E6074D

 E691AB

 E60048

 E6A8BB

 E6BFCB

 E6D6DB

 E6EDEB

 E6FFFB

 E6FFFF

Harmonies

Analogous

The Analogous color harmony consists of three colors that are next to each other on the color wheel.



CF58B2



E64C7C



DF5A47

Triad

The Triadic color harmony groups three colors that are evenly spaced from another and form a triangle on the color wheel.



E64C7C



5B9421



0096E9

Complementary

The Complementary color scheme is a pair of colors which are on the opposite of each other on the color wheel.



E64C7C



4CE6B6

Split Complementary

Split-complementary colors differ from the complementary color scheme. The scheme consists of three colors, the original color and two neighbors of the complement color.



009DC4



E64C7C



009B56

Square

The Square scheme is like the rectangle color scheme, but the four colors are evenly spaced on the color wheel.



E64C7C



958600



009E8F



0088F3

Rectangle

The Rectangle color scheme consists of four colors that form a rectangle on the color wheel.



E64C7C



CE6A27



009E8F



0099E0

Sweetspot

The Sweet Spot groups the original color and five complimentary colors.



E64C7C



FFCCDC



B54CE6



80616A



000000



808080

Same Dimension

The Same Dimension uses a secret algorithm to generate beautiful new colors.



E64C7C



FF3373



E6684C



73676B



B30038



330010

Inverse Universe

The Inverse Universe completely reimagines the original color for something new.



E64C7C



FF3373



4CCAE6



73676B



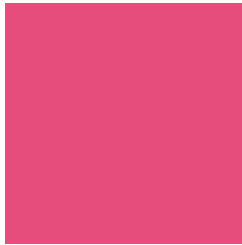
B30038



330010

Previews

White Background



This preview shows how the Hex color E64C7C looks on a white background.

Color Contrast Check

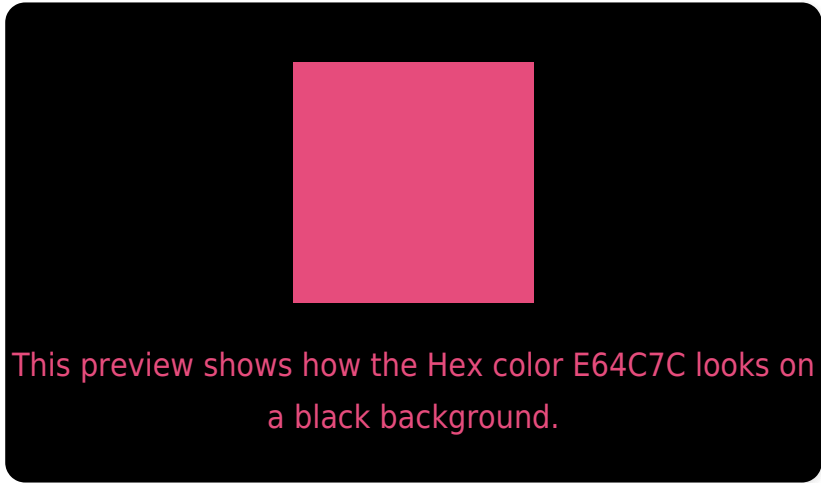
Large Text (above 18pt) WCAG AA ✓ Pass

Any Text WCAG AA ✗ Fail

Large Text (above 18pt) WCAG AAA ✗ Fail

Any Text WCAG AAA ✗ Fail

Black Background



Color Contrast Check

Large Text (above 18pt) WCAG AA ✓ Pass

Any Text WCAG AA ✓ Pass

Large Text (above 18pt) WCAG AAA ✓ Pass

Any Text WCAG AAA × Fail

If you want to check with other color combinations, try the [Color Contrast Checker](#).

Hex E64C7C Background



This preview shows how black text looks on a background with the Hex color E64C7C.



This preview shows how white text looks on a background with the Hex color E64C7C.

Color Blindness Simulation

Color vision deficiency is a very complex topic, and I could not describe the different causes any better than Wikipedia does, so if you want to learn more, you should check out their [article about color blindness](#).

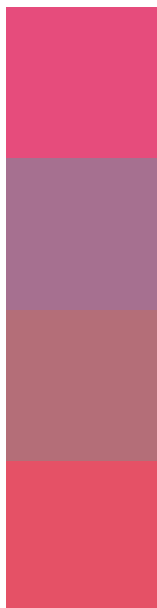
Dichromacy





Tritanopia
E45459

Trichromacy



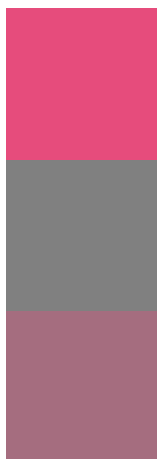
Original Color
E64C7C

Protanomaly
A67090

Deuteranomaly
B46E78

Tritanomaly
E55166

Monochromacy



Original Color
E64C7C

Achromatopsia
808080

Achromatomaly
A56D7F

CSS Examples

Text

The CSS property to change the color of the text to Hex E64C7C is called "color". The color property can be set on classes, ids or directly on the HTML element.

This example shows how text in the color #E64C7C looks like.

```
.text, #text, p{  
  color:#E64C7C  
}
```

If you want to add a text shadow in that color use the text-shadow property, you can generate a text shadow directly with our [CSS Text Shadow Generator](#).

Here you see how black text with a 4 pixel #E64C7C colored shadow looks like.

```
.shadow{ text-shadow: 4px 4px 2px #E64C7C
}
```

Border

The CSS property to change the border of an element to Hex E64C7C is called "border". The border property can be set on classes, ids or directly on the HTML element.

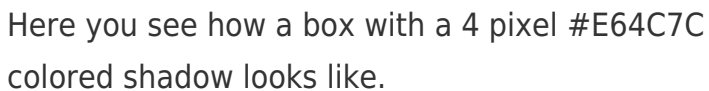
This example shows the color as border, it can be applied via the CSS property "border" or "border-color".

```
.border, #border, table{ border:4px solid
#E64C7C }
```

If only the border color should be changed use the property `border-color`.

```
.border{ border-color:#E64C7C }
```

If you want to add a box shadow in that color use:



Here you see how a box with a 4 pixel #E64C7C colored shadow looks like.

```
.boxshadow{ -moz-box-shadow:4px 4px 4px  
4px #E64C7C; -webkit-box-shadow:4px 4px  
4px 4px #E64C7C; box-shadow:4px 4px 4px  
4px #E64C7C }
```

Background

The CSS property to change the background color of an element to Hex E64C7C is called "background". The background property can be set on classes, ids or directly on the HTML element.

```
.background, #background, body{  
background:#E64C7C }
```

If only the background color should be changed can be used:

```
.background{ background-color:#E64C7C }
```

This example shows the color as background, it is applied via the CSS property "background".

To optimize and compress your CSS code, you can use our [online CSS compressor and optimizer](#) based on csstidy. If you want to create a linear or radial gradient as background or border, check our [CSS Gradient Generator](#).

Hey! You found this booklet interesting? Support Converting Colors with the new Membership Option!

The pro membership hides all ads, plus gives you double the colors in the color bucket, and more awesome pro features!

[Learn more, Memberships starting at \\$2.50/m!](#)

**Follow me
on Twitter!**

@ConvertingColor