

Converting Colors

Hex(E66C86)

Have a look what the booklet for
Hex(E66C86) contains.

| | |
|--|----|
| Hex(E66C86) | 3 |
| <i>Conversions</i> | 4 |
| <i>Details</i> | 6 |
| <i>Harmonies</i> | 11 |
| <i>Previews</i> | 23 |
| <i>Color Blindness Simulation</i> | 26 |
| <i>CSS Examples</i> | 29 |

Color

Hex(E66C86)

Conversions

Conversions Part 1

| Format | Color |
|-------------|----------------------------|
| Hex | E66C86 |
| RGB | 230, 108, 134 |
| RGB Percent | 90%, 42%, 53% |
| CMY | 0.0980, 0.5765, 0.4745 |
| CMYK | 0.00, 0.53, 0.42, 0.10 |
| HSL | 347°, 71%, 66% |
| HSV | 347°, 53%, 90% |
| XYZ | 42.2988, 29.2693, 25.9744 |
| YIQ | 147.4420, 64.3660, 33.9500 |

Conversions

Conversions Part 2

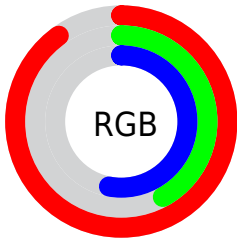
| Format | Color |
|-------------------------------------|-------------------------------|
| R _Y B | 230, 108, 134 |
| Decimal | 15101062 |
| CIE Lab | 61.02, 49.76, 8.75 |
| CIE LCh | 61, 50.526, 9.975 |
| Yxy | 29.2693, 0.4336, 0.3001 |
| Android (android.graphics.Color) | 4293291142 (0xFFE66C86) |
| YUV | 147.4420, -6.6269, 72.4034 |
| Hunter-Lab | 54.1012, 44.8825, 9.4052 |

Details

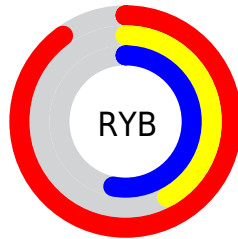
The Hex color **E66C86** is a light color, and the websafe version is hex **FF6699**. A complement of this color would be **6CE6CC**, and the grayscale version is **939393**.

A 20% lighter version of the original color is **FFA3BB**, and **AB3655** is the 20% darker color. If you saturate the color by 10%, you get **E65574**, and if you desaturate by 10%, it is **E68398**.

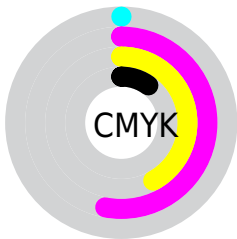
Distribution



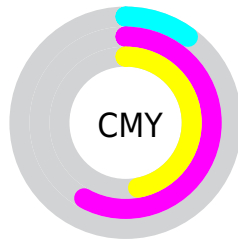
- Red (90%)
- Green (42%)
- Blue (53%)



- Red (90%)
- Yellow (42%)
- Blue (53%)



- Cyan (0%)
- Magenta (53%)
- Yellow (42%)
- Black (10%)



- Cyan (10%)
- Magenta (58%)
- Yellow (47%)

Brightness & Saturation Gradients

These gradients show how the Hex color E66C86 changes by changing the brightness by 10 percent. The first figure shows a shift by +10% for each color and the second figure -10%.

Similar to the brightness gradients but the following saturation gradients show a change of the Hex color E66C86 by changing the saturation by 10% instead.

 E66C86

 E66C86

FFFFFF

 C8516D

 FFA3BB

 AB3655

 FFBFD7

 8D173E

 FFDCF3

 710028

 FFF9FF

 550014

 3B0002

 170000

 000000

 E66C86

 E66C86

 E65574

 E68398

 E63E62

 E69AAA

 E62750

 E6B1BC

 E6103E

 E6C8CE

 E60031

 E6DFE0

 E6F6F3

 E6FFFF

Harmonies

Analogous

The Analogous color harmony consists of three colors that are next to each other on the color wheel.



D571B3



E66C86



DF755C

Triad

The Triadic color harmony groups three colors that are evenly spaced from another and form a triangle on the color wheel.



E66C86



6EA14C



00A0E7

Complementary

The Complementary color scheme is a pair of colors which are on the opposite of each other on the color wheel.



E66C86



6CE6CC

Split Complementary

Split-complementary colors differ from the complementary color scheme. The scheme consists of three colors, the original color and two neighbors of the complement color.



00A7CB



E66C86



1EA773

Square

The Square scheme is like the rectangle color scheme, but the four colors are evenly spaced on the color wheel.



E66C86



9E9636



00AAA1



5E93EB

Rectangle

The Rectangle color scheme consists of four colors that form a rectangle on the color wheel.



E66C86



CF8046



00AAA1



00A3E0

Sweetspot

The Sweet Spot groups the original color and five complimentary colors.



E66C86



FFD6DF



CC6CE6



80676C



000000



808080

Same Dimension

The Same Dimension uses a secret algorithm to generate beautiful new colors.



E66C86



FF5C7F



E68F6C



73676A



B30026



33000B

Inverse Universe

The Inverse Universe completely reimagines the original color for something new.



E66C86



FF5C7F



6CC3E6



73676A



B30026



33000B

Previews

White Background



This preview shows how the Hex color E66C86 looks on a white background.

Color Contrast Check

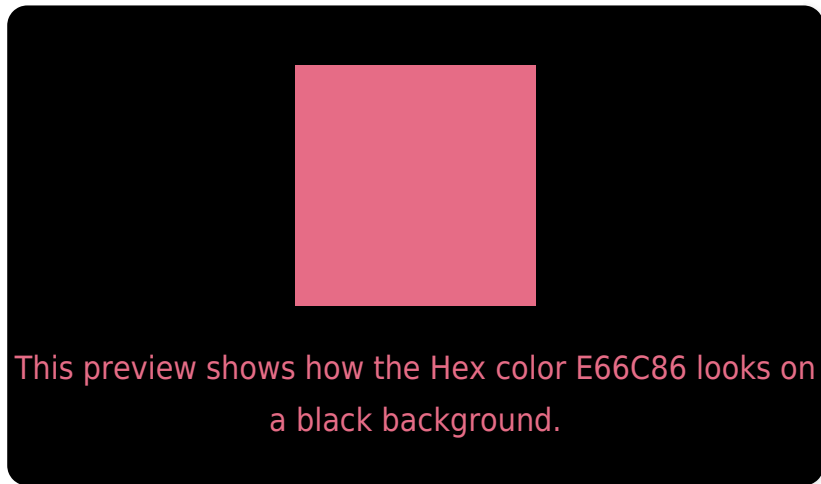
Large Text (above 18pt) WCAG AA ✓ Pass

Any Text WCAG AA × Fail

Large Text (above 18pt) WCAG AAA × Fail

Any Text WCAG AAA × Fail

Black Background



Color Contrast Check

Large Text (above 18pt) WCAG AA ✓ Pass

Any Text WCAG AA ✓ Pass

Large Text (above 18pt) WCAG AAA ✓ Pass

Any Text WCAG AAA × Fail

If you want to check with other color combinations, try the [Color Contrast Checker](#).

Hex E66C86 Background



This preview shows how black text looks on a background with the Hex color E66C86.

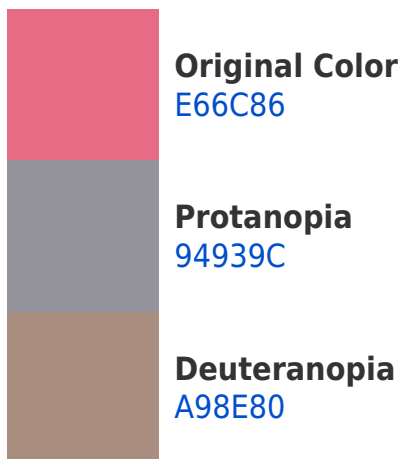


This preview shows how white text looks on a background with the Hex color E66C86.

Color Blindness Simulation

Color vision deficiency is a very complex topic, and I could not describe the different causes any better than Wikipedia does, so if you want to learn more, you should check out their [article about color blindness](#).

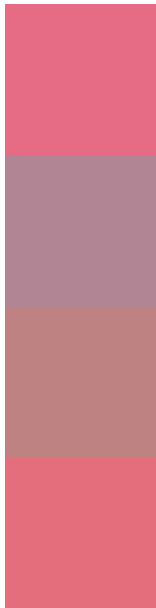
Dichromacy





Tritanopia
E56F76

Trichromacy



Original Color
E66C86

Protanomaly
B28594

Deuteranomaly
BF8282

Tritanomaly
E56E7C

Monochromacy



Original Color
E66C86

Achromatopsia
939393

Achromatomaly
B1858E

CSS Examples

Text

The CSS property to change the color of the text to Hex E66C86 is called "color". The color property can be set on classes, ids or directly on the HTML element.

This example shows how text in the color #E66C86 looks like.

```
.text, #text, p{  
    color:#E66C86  
}
```

If you want to add a text shadow in that color use the text-shadow property, you can generate a text shadow directly with our [CSS Text Shadow Generator](#).

Here you see how black text with a 4 pixel #E66C86 colored shadow looks like.

```
.shadow{ text-shadow: 4px 4px 2px #E66C86
}
```

Border

The CSS property to change the border of an element to Hex E66C86 is called "border". The border property can be set on classes, ids or directly on the HTML element.

This example shows the color as border, it can be applied via the CSS property "border" or "border-color".

```
.border, #border, table{ border:4px solid
#E66C86 }
```

If only the border color should be changed use the property `border-color`.

```
.border{ border-color:#E66C86 }
```

If you want to add a box shadow in that color use:

Here you see how a box with a 4 pixel #E66C86 colored shadow looks like.

```
.boxshadow{ -moz-box-shadow:4px 4px 4px  
4px #E66C86; -webkit-box-shadow:4px 4px  
4px 4px #E66C86; box-shadow:4px 4px 4px  
4px #E66C86 }
```

Background

The CSS property to change the background color of an element to Hex E66C86 is called "background". The background property can be set on classes, ids or directly on the HTML element.

```
.background, #background, body{  
background:#E66C86 }
```

If only the background color should be changed can be used:

```
.background{ background-color:#E66C86 }
```

This example shows the color as background, it is applied via the CSS property "background".

To optimize and compress your CSS code, you can use our [online CSS compressor and optimizer](#) based on csstidy. If you want to create a linear or radial gradient as background or border, check our [CSS Gradient Generator](#).

Hey! You found this booklet interesting? Support Converting Colors with the new Membership Option!

The pro membership hides all ads, plus gives you double the colors in the color bucket, and more awesome pro features!

[Learn more, Memberships starting at \\$2.50/m!](#)

**Follow me
on Twitter!**

@ConvertingColor