

Converting Colors

Hex(E66F89)

Have a look what the booklet for
Hex(E66F89) contains.

Hex(E66F89)	3
<i>Conversions</i>	4
<i>Details</i>	6
<i>Harmonies</i>	11
<i>Previews</i>	23
<i>Color Blindness Simulation</i>	26
<i>CSS Examples</i>	29

Color

Hex(E66F89)

Conversions

Conversions Part 1

Format	Color
Hex	E66F89
RGB	230, 111, 137
RGB Percent	90%, 44%, 54%
CMY	0.0980, 0.5647, 0.4627
CMYK	0.00, 0.52, 0.40, 0.10
HSL	347°, 70%, 67%
HSV	347°, 52%, 90%
XYZ	42.8329, 29.9980, 27.1996
YIQ	149.5450, 62.5780, 33.3140

Conversions

Conversions Part 2

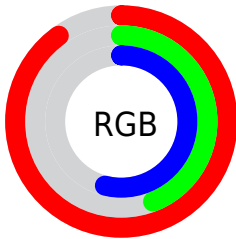
Format	Color
R _Y B	230, 111, 137
Decimal	15101833
CIE Lab	61.65, 48.63, 7.92
CIE LCh	62, 49.271, 9.255
Yxy	29.9980, 0.4282, 0.2999
Android (android.graphics.Color)	4293291913 (0xFFE66F89)
YUV	149.5450, -6.1847, 70.5590
Hunter-Lab	54.7704, 43.7467, 8.8953

Details

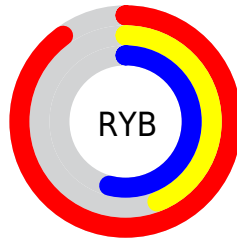
The Hex color **E66F89** is a light color, and the websafe version is hex **FF6699**. A complement of this color would be **6FE6CC**, and the grayscale version is **969696**.

A 20% lighter version of the original color is **FFA6BE**, and **AB3957** is the 20% darker color. If you saturate the color by 10%, you get **E65877**, and if you desaturate by 10%, it is **E6869B**.

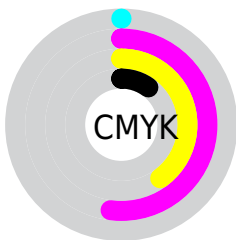
Distribution



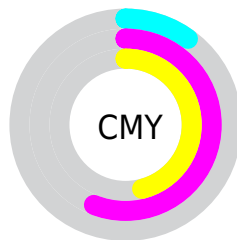
- Red (90%)
- Green (44%)
- Blue (54%)



- Red (90%)
- Yellow (44%)
- Blue (54%)



- Cyan (0%)
- Magenta (52%)
- Yellow (40%)
- Black (10%)



- Cyan (10%)
- Magenta (56%)
- Yellow (46%)

Brightness & Saturation Gradients

These gradients show how the Hex color E66F89 changes by changing the brightness by 10 percent. The first figure shows a shift by +10% for each color and the second figure -10%.

Similar to the brightness gradients but the following saturation gradients show a change of the Hex color E66F89 by changing the saturation by 10% instead.

 E66F89

 E66F89

FFFFFF

 C85470

 FFA6BE

 AB3957

 FFC2DA

 8E1C40

 FFDFF6

 71002A

 FFFCFF

 550016

 3C0001

 190001

 000000

 E66F89

 E66F89

 E65877

 E6869B

 E64165

 E69DAD

 E62A53

 E6B4BF

 E61341

 E6CBD1

 E60032

 E6E2E3

 E6F9F5

 E6FFFF

Harmonies

Analogous

The Analogous color harmony consists of three colors that are next to each other on the color wheel.



D574B5



E66F89



E07860

Triad

The Triadic color harmony groups three colors that are evenly spaced from another and form a triangle on the color wheel.



E66F89



72A24E



00A2E6

Complementary

The Complementary color scheme is a pair of colors which are on the opposite of each other on the color wheel.



E66F89



6FE6CC

Split Complementary

Split-complementary colors differ from the complementary color scheme. The scheme consists of three colors, the original color and two neighbors of the complement color.



00A9CB



E66F89



2BA974

Square

The Square scheme is like the rectangle color scheme, but the four colors are evenly spaced on the color wheel.



E66F89



A1973A



00ABA2



6095EB

Rectangle

The Rectangle color scheme consists of four colors that form a rectangle on the color wheel.



E66F89



D1824A



00ABA2



00A5DF

Sweetspot

The Sweet Spot groups the original color and five complimentary colors.



E66F89



FFD6DF



CA6FE6



80676D



000000



808080

Same Dimension

The Same Dimension uses a secret algorithm to generate beautiful new colors.



E66F89



FF6183



E68F6F



73676A



B30027



33000B

Inverse Universe

The Inverse Universe completely reimagines the original color for something new.



E66F89



FF6183



6FC6E6



73676A



B30027



33000B

Previews

White Background



This preview shows how the Hex color E66F89 looks on a white background.

Color Contrast Check

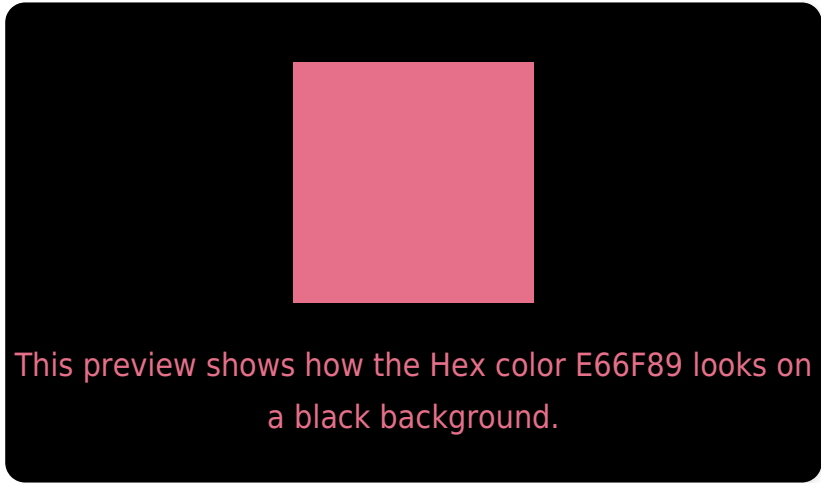
Large Text (above 18pt) WCAG AA ✓ Pass

Any Text WCAG AA × Fail

Large Text (above 18pt) WCAG AAA × Fail

Any Text WCAG AAA × Fail

Black Background



Color Contrast Check

Large Text (above 18pt) WCAG AA ✓ Pass

Any Text WCAG AA ✓ Pass

Large Text (above 18pt) WCAG AAA ✓ Pass

Any Text WCAG AAA ✓ Pass

If you want to check with other color combinations, try the [Color Contrast Checker](#).

Hex E66F89 Background



This preview shows how black text looks on a background with the Hex color E66F89.

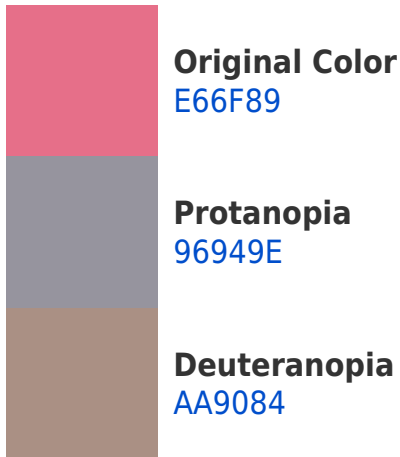


This preview shows how white text looks on a background with the Hex color E66F89.

Color Blindness Simulation

Color vision deficiency is a very complex topic, and I could not describe the different causes any better than Wikipedia does, so if you want to learn more, you should check out their [article about color blindness](#).

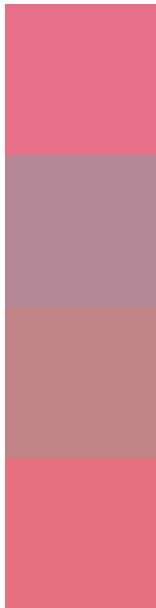
Dichromacy





Tritanopia
E5727A

Trichromacy



Original Color
E66F89

Protanomaly
B38796

Deuteranomaly
C08486

Tritanomaly
E5717F

Monochromacy



Original Color
E66F89

Achromatopsia
969696

Achromatomaly
B38891

CSS Examples

Text

The CSS property to change the color of the text to Hex E66F89 is called "color". The color property can be set on classes, ids or directly on the HTML element.

This example shows how text in the color #E66F89 looks like.

```
.text, #text, p{  
    color:#E66F89  
}
```

If you want to add a text shadow in that color use the text-shadow property, you can generate a text shadow directly with our [CSS Text Shadow Generator](#).

Here you see how black text with a 4 pixel #E66F89 colored shadow looks like.

```
.shadow{ text-shadow: 4px 4px 2px #E66F89
}
```

Border

The CSS property to change the border of an element to Hex E66F89 is called "border". The border property can be set on classes, ids or directly on the HTML element.

This example shows the color as border, it can be applied via the CSS property "border" or "border-color".

```
.border, #border, table{ border:4px solid
#E66F89 }
```

If only the border color should be changed use the property `border-color`.

```
.border{ border-color:#E66F89 }
```

If you want to add a box shadow in that color use:

Here you see how a box with a 4 pixel #E66F89 colored shadow looks like.

```
.boxshadow{ -moz-box-shadow:4px 4px 4px  
4px #E66F89; -webkit-box-shadow:4px 4px  
4px 4px #E66F89; box-shadow:4px 4px 4px  
4px #E66F89 }
```

Background

The CSS property to change the background color of an element to Hex E66F89 is called "background". The background property can be set on classes, ids or directly on the HTML element.

```
.background, #background, body{  
background:#E66F89 }
```

If only the background color should be changed can be used:

```
.background{ background-color:#E66F89 }
```

This example shows the color as background, it is applied via the CSS property "background".

To optimize and compress your CSS code, you can use our [online CSS compressor and optimizer](#) based on csstidy. If you want to create a linear or radial gradient as background or border, check our [CSS Gradient Generator](#).

Hey! You found this booklet interesting? Support Converting Colors with the new Membership Option!

The pro membership hides all ads, plus gives you double the colors in the color bucket, and more awesome pro features!

[Learn more, Memberships starting at \\$2.50/m!](#)

**Follow me
on Twitter!**

@ConvertingColor