

# Converting Colors

Hex(E67F68)

Have a look what the booklet for  
Hex(E67F68) contains.

<b>Hex(E67F68)</b> .....	3
<b><i>Conversions</i></b> .....	4
<b><i>Details</i></b> .....	6
<b><i>Harmonies</i></b> .....	11
<b><i>Previews</i></b> .....	23
<b><i>Color Blindness Simulation</i></b> .....	26
<b><i>CSS Examples</i></b> .....	29

# **Color**

**Hex(E67F68)**

# Conversions

## Conversions Part 1

Format	Color
Hex	E67F68
RGB	230, 127, 104
RGB Percent	90%, 50%, 41%
CMY	0.0980, 0.5020, 0.5922
CMYK	0.00, 0.45, 0.55, 0.10
HSL	11°, 72%, 65%
HSV	11°, 55%, 90%
XYZ	42.7212, 33.0012, 17.2149
YIQ	155.1750, 68.7710, 14.6830

# Conversions

## Conversions Part 2

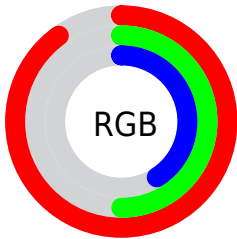
Format	Color
<a href="#">RYB</a>	<a href="#">230, 132, 104</a>
Decimal	<a href="#">15105896</a>
CIELab	<a href="#">64.16, 37.48, 30.06</a>
CIElCh	<a href="#">64, 48.048, 38.734</a>
Yxy	<a href="#">33.0012, 0.4597, 0.3551</a>
Android (android.graphics.Color)	<a href="#">4293295976 (0xFFE67F68)</a>
YUV	<a href="#">155.1750, -25.2293, 65.6215</a>
Hunter-Lab	<a href="#">57.4467, 32.2128, 22.4454</a>

# Details

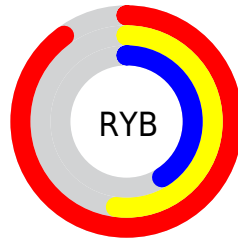
The Hex color **E67F68** is a light color, and the websafe version is hex **CC6666**. A complement of this color would be **68CFE6**, and the grayscale version is **9B9B9B**.

A 20% lighter version of the original color is **FFB59B**, and **AA4C38** is the 20% darker color. If you saturate the color by 10%, you get **E66C51**, and if you desaturate by 10%, it is **E6927F**.

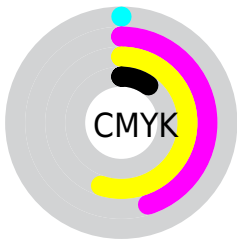
# Distribution



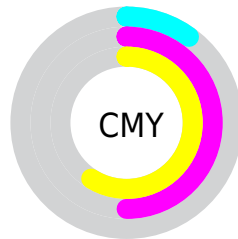
- Red (90%)
- Green (50%)
- Blue (41%)



- Red (90%)
- Yellow (52%)
- Blue (41%)



- Cyan (0%)
- Magenta (45%)
- Yellow (55%)
- Black (10%)



- Cyan (10%)
- Magenta (50%)
- Yellow (59%)

# Brightness & Saturation Gradients

These gradients show how the Hex color E67F68 changes by changing the brightness by 10 percent. The first figure shows a shift by +10% for each color and the second figure -10%.

Similar to the brightness gradients but the following saturation gradients show a change of the Hex color E67F68 by changing the saturation by 10% instead.



 E67F68

 E67F68

FFFFFF

 C86550

 FF59B

 AA4C38

 FFD1B6

 8D3222

 FFEED2

 70180D

 FFFFEE

 540000

 390000

 190001

 000000

 E67F68

 E67F68

 E66C51

 E6927F

 E6593A

 E6A596

 E64723

 E6B7AD

 E6340C

 E6CAC4

 E62A00

 E6DDDB

 E6F0F2

 E6FFFF

# Harmonies

## Analogous

The Analogous color harmony consists of three colors that are next to each other on the color wheel.



EC7791



E67F68



CE8E4B

# Triad

The Triadic color harmony groups three colors that are evenly spaced from another and form a triangle on the color wheel.



E67F68



3BAF7B



699CF0

# Complementary

The Complementary color scheme is a pair of colors which are on the opposite of each other on the color wheel.



E67F68



68CFE6

# Split Complementary

Split-complementary colors differ from the complementary color scheme. The scheme consists of three colors, the original color and two neighbors of the complement color.



00A8EB



E67F68



00B1A7

# Square

The Square scheme is like the rectangle color scheme, but the four colors are evenly spaced on the color wheel.



E67F68



7BA856



00AFD0



AF8BDF

# Rectangle

The Rectangle color scheme consists of four colors that form a rectangle on the color wheel.



E67F68



B69943



00AFD0



46A1F1



# Sweetspot

The Sweet Spot groups the original color and five complimentary colors.



E67F68



FFDED6



E668D1



806C67



000000



808080



# Same Dimension

The Same Dimension uses a secret algorithm to generate beautiful new colors.



E67F68



FF7557



E6BC68



736967



B32100



330900

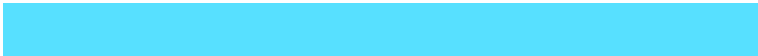


# Inverse Universe

The Inverse Universe completely reimagines the original color for something new.



68CFE6



57E0FF



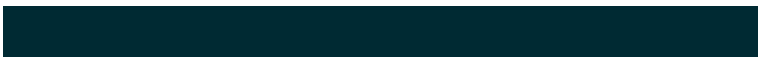
6892E6



677173



0092B3



002A33



# Previews

## White Background



This preview shows how the Hex color E67F68 looks on a white background.

## Color Contrast Check

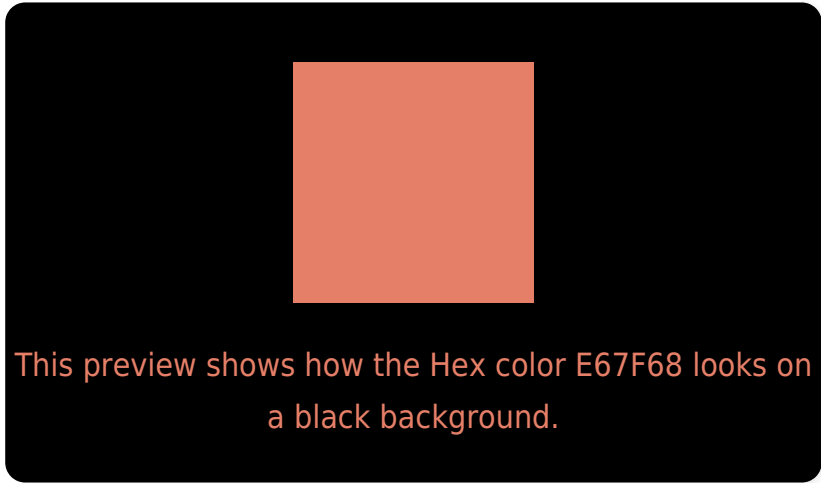
Large Text (above 18pt) WCAG AA × Fail

Any Text WCAG AA × Fail

Large Text (above 18pt) WCAG AAA × Fail

Any Text WCAG AAA × Fail

# Black Background



## Color Contrast Check

Large Text (above 18pt) WCAG AA ✓ Pass

Any Text WCAG AA ✓ Pass

Large Text (above 18pt) WCAG AAA ✓ Pass

Any Text WCAG AAA ✓ Pass

If you want to check with other color combinations, try the [Color Contrast Checker](#).



## Hex E67F68 Background



This preview shows how black text looks on a background with the Hex color E67F68.



This preview shows how white text looks on a background with the Hex color E67F68.

# Color Blindness Simulation

Color vision deficiency is a very complex topic, and I could not describe the different causes any better than Wikipedia does, so if you want to learn more, you should check out their [article about color blindness](#).

## Dichromacy



**Original Color**  
E67F68

**Protanopia**  
A79C74

**Deuteranopia**  
BC9564

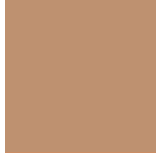


**Tritanopia**  
E87B84

# Trichromacy



**Original Color**  
E67F68



**Protanomaly**  
BE9170



**Deuteranomaly**  
CB8D65

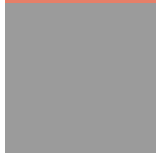


**Tritanomaly**  
E77C7A

# Monochromacy



**Original Color**  
E67F68



**Achromatopsia**  
9B9B9B



**Achromatomaly**  
B69188

# CSS Examples

## Text

The CSS property to change the color of the text to Hex E67F68 is called "color". The color property can be set on classes, ids or directly on the HTML element.

This example shows how text in the color #E67F68 looks like.

```
.text, #text, p{  
    color:#E67F68  
}
```

If you want to add a text shadow in that color use the text-shadow property, you can generate a text shadow directly with our [CSS Text Shadow Generator](#).

Here you see how black text with a 4 pixel #E67F68 colored shadow looks like.

```
.shadow{ text-shadow: 4px 4px 2px #E67F68
}
```

## Border

The CSS property to change the border of an element to Hex E67F68 is called "border". The border property can be set on classes, ids or directly on the HTML element.

This example shows the color as border, it can be applied via the CSS property "border" or "border-color".

```
.border, #border, table{ border:4px solid
#E67F68 }
```

If only the border color should be changed use the property `border-color`.

```
.border{ border-color:#E67F68 }
```

If you want to add a box shadow in that color use:

Here you see how a box with a 4 pixel #E67F68 colored shadow looks like.

```
.boxshadow{ -moz-box-shadow:4px 4px 4px  
4px #E67F68; -webkit-box-shadow:4px 4px  
4px 4px #E67F68; box-shadow:4px 4px 4px  
4px #E67F68 }
```

# Background

The CSS property to change the background color of an element to Hex E67F68 is called "background". The background property can be set on classes, ids or directly on the HTML element.

```
.background, #background, body{  
background:#E67F68 }
```

If only the background color should be changed can be used:

```
.background{ background-color:#E67F68 }
```

This example shows the color as background, it is applied via the CSS property "background".

To optimize and compress your CSS code, you can use our [online CSS compressor and optimizer](#) based on csstidy. If you want to create a linear or radial gradient as background or border, check our [CSS Gradient Generator](#).



Hey! You found this booklet interesting? Support Converting Colors with the new Membership Option!

The pro membership hides all ads, plus gives you double the colors in the color bucket, and more awesome pro features!

**[Learn more, Memberships starting at \\$2.50/m!](#)**

**Follow me  
on Twitter!**

@ConvertingColor