

# Converting Colors

Hex(E67F9F)

Have a look what the booklet for  
Hex(E67F9F) contains.

<b>Hex(E67F9F)</b> .....	3
<i><b>Conversions</b></i> .....	4
<i><b>Details</b></i> .....	6
<i><b>Harmonies</b></i> .....	11
<i><b>Previews</b></i> .....	23
<i><b>Color Blindness Simulation</b></i> .....	26
<i><b>CSS Examples</b></i> .....	29

# **Color**

**Hex(E67F9F)**

# Conversions

## Conversions Part 1

<b>Format</b>	<b>Color</b>
Hex	E67F9F
RGB	230, 127, 159
RGB Percent	90%, 50%, 62%
CMY	0.0980, 0.5020, 0.3765
CMYK	0.00, 0.45, 0.31, 0.10
HSL	341°, 67%, 70%
HSV	341°, 45%, 90%
XYZ	46.4805, 34.5049, 37.0112
YIQ	161.4450, 51.1160, 31.7880

# Conversions

## Conversions Part 2

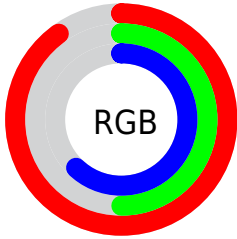
<b>Format</b>	<b>Color</b>
<b>R<sub>YB</sub></b>	230, 127, 159
Decimal	15105951
CIE Lab	65.36, 43.23, 0.70
CIE LCh	65, 43.236, 0.926
Yxy	34.5049, 0.3939, 0.2924
Android (android.graphics.Color)	4293296031 (0xFFE67F9F)
YUV	161.4450, -1.2054, 60.1227
Hunter-Lab	58.7409, 38.4469, 3.7614

# Details

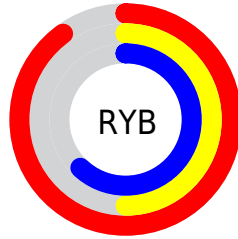
The Hex color **E67F9F** is a light color, and the websafe version is hex **CC6699**. A complement of this color would be **7FE6C6**, and the grayscale version is **A1A1A1**.

A 20% lighter version of the original color is **FFB6D6**, and **AC4B6C** is the 20% darker color. If you saturate the color by 10%, you get **E6688F**, and if you desaturate by 10%, it is **E696AF**.

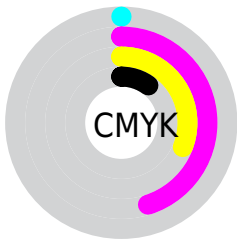
# Distribution



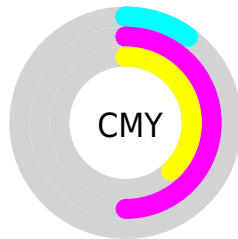
- Red (90%)
- Green (50%)
- Blue (62%)



- Red (90%)
- Yellow (50%)
- Blue (62%)



- Cyan (0%)
- Magenta (45%)
- Yellow (31%)
- Black (10%)



- Cyan (10%)
- Magenta (50%)
- Yellow (38%)

# Brightness & Saturation Gradients

These gradients show how the Hex color E67F9F changes by changing the brightness by 10 percent. The first figure shows a shift by +10% for each color and the second figure -10%.

Similar to the brightness gradients but the following saturation gradients show a change of the Hex color E67F9F by changing the saturation by 10% instead.



 E67F9F

 E67F9F

FFFFFF

 C96585

 FFB6D6

 AC4B6C

 FFD2F2

 903154

 FFEFFF

 74143D

 590027

 3E0012

 250001

 000000

 E67F9F

 E67F9F

 E6688F

 E696AF

 E6517F

 E6ADB F

 E63A6F

 E6C4CF

 E62360

 E6DBDE

 E60C50

 E6F2EE

 E60047

 E6FFFE

 E6FFFF

# Harmonies

## Analogous

The Analogous color harmony consists of three colors that are next to each other on the color wheel.



D086C5



E67F9F



E68379

# Triad

The Triadic color harmony groups three colors that are evenly spaced from another and form a triangle on the color wheel.



E67F9F



8DA85A



00ACE2

# Complementary

The Complementary color scheme is a pair of colors which are on the opposite of each other on the color wheel.



E67F9F



7FE6C6

# Split Complementary

Split-complementary colors differ from the complementary color scheme. The scheme consists of three colors, the original color and two neighbors of the complement color.



00B2C5



E67F9F



5DAF78

# Square

The Square scheme is like the rectangle color scheme, but the four colors are evenly spaced on the color wheel.



E67F9F



B59D50



00B39F



61A2EC

# Rectangle

The Rectangle color scheme consists of four colors that form a rectangle on the color wheel.



E67F9F



DC8B64



00B39F



00AFDA



# Sweetspot

The Sweet Spot groups the original color and five complimentary colors.



E67F9F



FFDEE8



C57FE6



806B71



000000



808080



# Same Dimension

The Same Dimension uses a secret algorithm to generate beautiful new colors.



E67F9F



FF75A0



E6927F



73676B



B30037



330010



# Inverse Universe

The Inverse Universe completely reimagines the original color for something new.



E67F9F



FF75A0



7FD3E6



73676B



B30037



330010



# Previews

## White Background



This preview shows how the Hex color E67F9F looks on a white background.

## Color Contrast Check

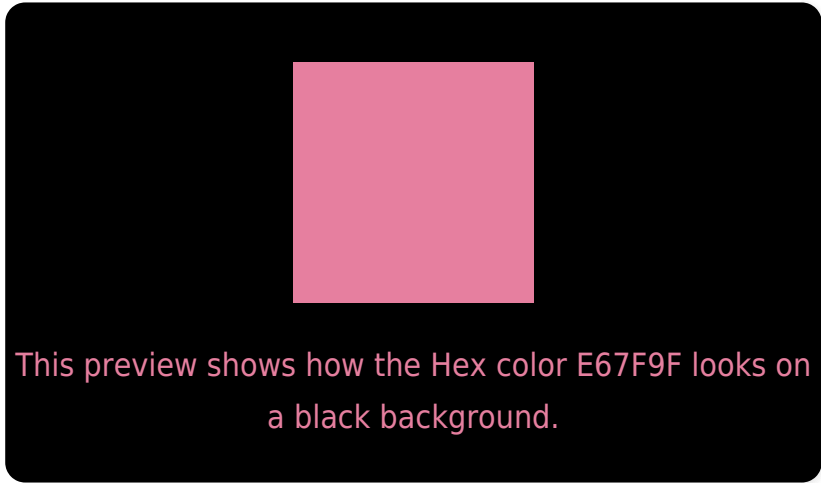
Large Text (above 18pt) WCAG AA × Fail

Any Text WCAG AA × Fail

Large Text (above 18pt) WCAG AAA × Fail

Any Text WCAG AAA × Fail

# Black Background



## Color Contrast Check

Large Text (above 18pt) WCAG AA ✓ Pass

Any Text WCAG AA ✓ Pass

Large Text (above 18pt) WCAG AAA ✓ Pass

Any Text WCAG AAA ✓ Pass

If you want to check with other color combinations, try the [Color Contrast Checker](#).



## Hex E67F9F Background



This preview shows how black text looks on a background with the Hex color E67F9F.



This preview shows how white text looks on a background with the Hex color E67F9F.

# Color Blindness Simulation

Color vision deficiency is a very complex topic, and I could not describe the different causes any better than Wikipedia does, so if you want to learn more, you should check out their [article about color blindness](#).

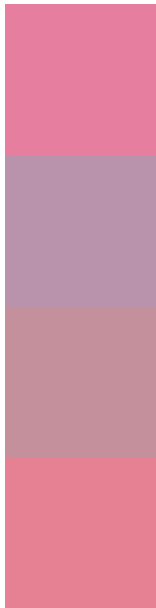
## Dichromacy





**Tritanopia**  
E4828C

# Trichromacy



**Original Color**  
E67F9F

**Protanomaly**  
B893AB

**Deuteranomaly**  
C4909C

**Tritanomaly**  
E58193

# Monochromacy



**Original Color**  
E67F9F

**Achromatopsia**  
A1A1A1

**Achromatomaly**  
BA95A0

# CSS Examples

## Text

The CSS property to change the color of the text to Hex E67F9F is called "color". The color property can be set on classes, ids or directly on the HTML element.

This example shows how text in the color #E67F9F looks like.

```
.text, #text, p{  
    color:#E67F9F  
}
```

If you want to add a text shadow in that color use the text-shadow property, you can generate a text shadow directly with our [CSS Text Shadow Generator](#).

Here you see how black text with a 4 pixel #E67F9F colored shadow looks like.

```
.shadow{ text-shadow: 4px 4px 2px #E67F9F
}
```

## Border

The CSS property to change the border of an element to Hex E67F9F is called "border". The border property can be set on classes, ids or directly on the HTML element.

This example shows the color as border, it can be applied via the CSS property "border" or "border-color".

```
.border, #border, table{ border:4px solid
#E67F9F }
```

If only the border color should be changed use the property `border-color`.

```
.border{ border-color:#E67F9F }
```

If you want to add a box shadow in that color use:

Here you see how a box with a 4 pixel #E67F9F colored shadow looks like.

```
.boxshadow{ -moz-box-shadow:4px 4px 4px  
4px #E67F9F; -webkit-box-shadow:4px 4px  
4px 4px #E67F9F; box-shadow:4px 4px 4px  
4px #E67F9F }
```

# Background

The CSS property to change the background color of an element to Hex E67F9F is called "background". The background property can be set on classes, ids or directly on the HTML element.

```
.background, #background, body{  
background:#E67F9F }
```

If only the background color should be changed can be used:

```
.background{ background-color:#E67F9F }
```

This example shows the color as background, it is applied via the CSS property "background".

To optimize and compress your CSS code, you can use our [online CSS compressor and optimizer](#) based on csstidy. If you want to create a linear or radial gradient as background or border, check our [CSS Gradient Generator](#).



Hey! You found this booklet interesting? Support Converting Colors with the new Membership Option!

The pro membership hides all ads, plus gives you double the colors in the color bucket, and more awesome pro features!

**[Learn more, Memberships starting at \\$2.50/m!](#)**

**Follow me  
on Twitter!**

@ConvertingColor