

Converting Colors

Hex(E68EA5)

Have a look what the booklet for
Hex(E68EA5) contains.

Hex(E68EA5)	3
<i>Conversions</i>	4
<i>Details</i>	6
<i>Harmonies</i>	11
<i>Previews</i>	23
<i>Color Blindness Simulation</i>	26
<i>CSS Examples</i>	29

Color

Hex(E68EA5)

Conversions

Conversions Part 1

Format	Color
Hex	E68EA5
RGB	230, 142, 165
RGB Percent	90%, 56%, 65%
CMY	0.0980, 0.4431, 0.3529
CMYK	0.00, 0.38, 0.28, 0.10
HSL	344°, 64%, 73%
HSV	344°, 38%, 90%
XYZ	49.0977, 38.8856, 40.5153
YIQ	170.9340, 45.0650, 25.8090

Conversions

Conversions Part 2

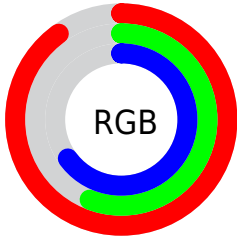
Format	Color
R_{YB}	230, 142, 165
Decimal	15109797
CIE _{Lab}	68.67, 36.23, 2.13
CIE _{LCh}	69, 36.297, 3.361
Yxy	38.8856, 0.3821, 0.3026
Android (android.graphics.Color)	4293299877 (0xFFE68EA5)
YUV	170.9340, -2.9255, 51.8009
Hunter-Lab	62.3583, 31.4144, 5.1291

Details

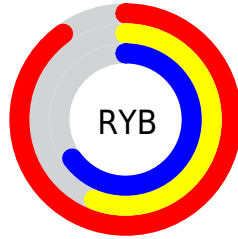
The Hex color **E68EA5** is a light color, and the websafe version is hex **FF9999**. A complement of this color would be **8EE6CF**, and the grayscale version is **ABABAB**.

A 20% lighter version of the original color is **FFC5DC**, and **AC5A71** is the 20% darker color. If you saturate the color by 10%, you get **E67794**, and if you desaturate by 10%, it is **E6A5B6**.

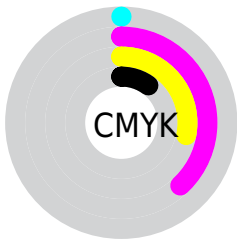
Distribution



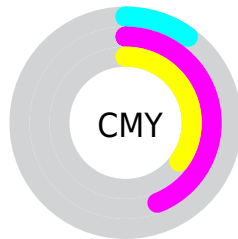
- Red (90%)
- Green (56%)
- Blue (65%)



- Red (90%)
- Yellow (56%)
- Blue (65%)



- Cyan (0%)
- Magenta (38%)
- Yellow (28%)
- Black (10%)



- Cyan (10%)
- Magenta (44%)
- Yellow (35%)

Brightness & Saturation Gradients

These gradients show how the Hex color E68EA5 changes by changing the brightness by 10 percent. The first figure shows a shift by +10% for each color and the second figure -10%.

Similar to the brightness gradients but the following saturation gradients show a change of the Hex color E68EA5 by changing the saturation by 10% instead.

 E68EA5

 E68EA5

FFFFFF

 C9748B

 FFC5DC

 AC5A71

 FFE1F8

 914159

FFFEFF

 752842

 5B0D2C

 410017

 2B0001

 000000

 E68EA5

 E68EA5

 E67794

 E6A5B6

 E66083

 E6BCC7

 E64972

 E6D3D8

 E63261

 E6EAE9

 E61B50

 E6FFFA

 E6043F

 E6FFFF

 E6003C

Harmonies

Analogous

The Analogous color harmony consists of three colors that are next to each other on the color wheel.



D493C6



E68EA5



E69285

Triad

The Triadic color harmony groups three colors that are evenly spaced from another and form a triangle on the color wheel.



E68EA5



97B070



46B3E1

Complementary

The Complementary color scheme is a pair of colors which are on the opposite of each other on the color wheel.



E68EA5



8EE6CF

Split Complementary

Split-complementary colors differ from the complementary color scheme. The scheme consists of three colors, the original color and two neighbors of the complement color.



21B8CA



E68EA5



6FB789

Square

The Square scheme is like the rectangle color scheme, but the four colors are evenly spaced on the color wheel.



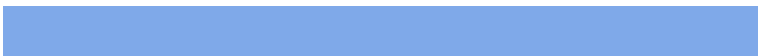
E68EA5



BAA765



44B9AA



7FA9E9

Rectangle

The Rectangle color scheme consists of four colors that form a rectangle on the color wheel.



E68EA5



DC9874



44B9AA



34B5DB

Sweetspot

The Sweet Spot groups the original color and five complimentary colors.



E68EA5



FFE3EA



CF8EE6



806F73



000000



808080

Same Dimension

The Same Dimension uses a secret algorithm to generate beautiful new colors.



E68EA5



FF8AA8



E6A38E



73676A



B3002F



33000D

Inverse Universe

The Inverse Universe completely reimagines the original color for something new.



E68EA5



FF8AA8



8ED1E6



73676A



B3002F



33000D

Previews

White Background



This preview shows how the Hex color E68EA5 looks on a white background.

Color Contrast Check

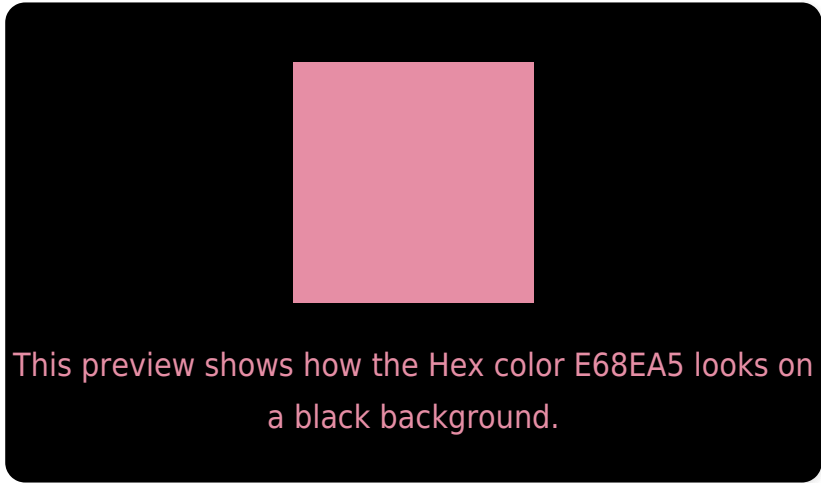
Large Text (above 18pt) WCAG AA × Fail

Any Text WCAG AA × Fail

Large Text (above 18pt) WCAG AAA × Fail

Any Text WCAG AAA × Fail

Black Background



Color Contrast Check

Large Text (above 18pt) WCAG AA ✓ Pass

Any Text WCAG AA ✓ Pass

Large Text (above 18pt) WCAG AAA ✓ Pass

Any Text WCAG AAA ✓ Pass

If you want to check with other color combinations, try the [Color Contrast Checker](#).

Hex E68EA5 Background



This preview shows how black text looks on a background with the Hex color E68EA5.

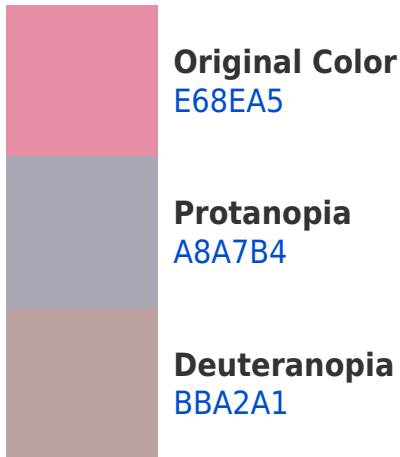


This preview shows how white text looks on a background with the Hex color E68EA5.

Color Blindness Simulation

Color vision deficiency is a very complex topic, and I could not describe the different causes any better than Wikipedia does, so if you want to learn more, you should check out their [article about color blindness](#).

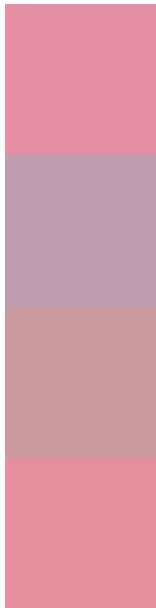
Dichromacy





Tritanopia
E5909B

Trichromacy



Original Color
E68EA5

Protanomaly
BF9EAF

Deuteranomaly
CB9BA2

Tritanomaly
E58F9F

Monochromacy



Original Color
E68EA5

Achromatopsia
ABABAB

Achromatomaly
C0A0A9

CSS Examples

Text

The CSS property to change the color of the text to Hex E68EA5 is called "color". The color property can be set on classes, ids or directly on the HTML element.

This example shows how text in the color #E68EA5 looks like.

```
.text, #text, p{  
    color:#E68EA5  
}
```

If you want to add a text shadow in that color use the text-shadow property, you can generate a text shadow directly with our [CSS Text Shadow Generator](#).

Here you see how black text with a 4 pixel #E68EA5 colored shadow looks like.

```
.shadow{ text-shadow: 4px 4px 2px #E68EA5
}
```

Border

The CSS property to change the border of an element to Hex E68EA5 is called "border". The border property can be set on classes, ids or directly on the HTML element.

This example shows the color as border, it can be applied via the CSS property "border" or "border-color".

```
.border, #border, table{ border:4px solid
#E68EA5 }
```

If only the border color should be changed use the property `border-color`.

```
.border{ border-color:#E68EA5 }
```

If you want to add a box shadow in that color use:

Here you see how a box with a 4 pixel #E68EA5 colored shadow looks like.

```
.boxshadow{ -moz-box-shadow:4px 4px 4px  
4px #E68EA5; -webkit-box-shadow:4px 4px  
4px 4px #E68EA5; box-shadow:4px 4px 4px  
4px #E68EA5 }
```

Background

The CSS property to change the background color of an element to Hex E68EA5 is called "background". The background property can be set on classes, ids or directly on the HTML element.

```
.background, #background, body{  
background:#E68EA5 }
```

If only the background color should be changed can be used:

```
.background{ background-color:#E68EA5 }
```

This example shows the color as background, it is applied via the CSS property "background".

To optimize and compress your CSS code, you can use our [online CSS compressor and optimizer](#) based on csstidy. If you want to create a linear or radial gradient as background or border, check our [CSS Gradient Generator](#).

Hey! You found this booklet interesting? Support Converting Colors with the new Membership Option!

The pro membership hides all ads, plus gives you double the colors in the color bucket, and more awesome pro features!

[Learn more, Memberships starting at \\$2.50/m!](#)

**Follow me
on Twitter!**

@ConvertingColor