

Converting Colors

Hex(E6B3C9)

Have a look what the booklet for
Hex(E6B3C9) contains.

Hex(E6B3C9)	3
<i>Conversions</i>	4
<i>Details</i>	6
<i>Harmonies</i>	11
<i>Previews</i>	23
<i>Color Blindness Simulation</i>	26
<i>CSS Examples</i>	29

Color

Hex(E6B3C9)

Conversions

Conversions Part 1

Format	Color
Hex	E6B3C9
RGB	230, 179, 201
RGB Percent	90%, 70%, 79%
CMY	0.0980, 0.2980, 0.2118
CMYK	0.00, 0.22, 0.13, 0.10
HSL	334°, 50%, 80%
HSV	334°, 22%, 90%
XYZ	59.2958, 53.2802, 62.4172
YIQ	196.7570, 23.3340, 17.6540

Conversions

Conversions Part 2

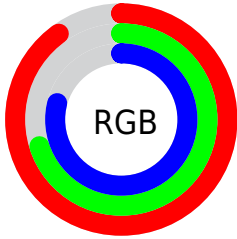
Format	Color
R _Y B	230, 179, 201
Decimal	15119305
CIE Lab	78.04, 21.89, -4.00
CIE LCh	78, 22.251, 349.635
Yxy	53.2802, 0.3388, 0.3045
Android (android.graphics.Color)	4293309385 (0xFFE6B3C9)
YUV	196.7570, 2.0918, 29.1541
Hunter-Lab	72.9933, 17.2655, 0.3959

Details

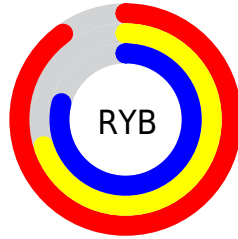
The Hex color **E6B3C9** is a light color, and the websafe version is hex **FFCCCC**. A complement of this color would be **B3E6D0**, and the grayscale version is **C5C5C5**.

A 20% lighter version of the original color is **FFEBFF**, and **AE7E93** is the 20% darker color. If you saturate the color by 10%, you get **E69CBC**, and if you desaturate by 10%, it is **E6CAD6**.

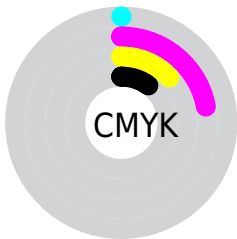
Distribution



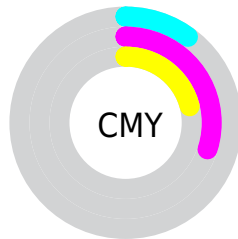
- Red (90%)
- Green (70%)
- Blue (79%)



- Red (90%)
- Yellow (70%)
- Blue (79%)



- Cyan (0%)
- Magenta (22%)
- Yellow (13%)
- Black (10%)



- Cyan (10%)
- Magenta (30%)
- Yellow (21%)

Brightness & Saturation Gradients

These gradients show how the Hex color E6B3C9 changes by changing the brightness by 10 percent. The first figure shows a shift by +10% for each color and the second figure -10%.

Similar to the brightness gradients but the following saturation gradients show a change of the Hex color E6B3C9 by changing the saturation by 10% instead.

 E6B3C9

 E6B3C9

FFFFFF

 CA98AE

 FFE8FF

 AE7E93

 936579

 794C61

 5F3549

 471F32

 2F091D

 1A0002

 000000

 E6B3C9

 E6B3C9

 E69CBC

 E6CAD6

 E685AF

 E6E1E3

 E66EA2

 E6F8F0

 E65795

 E6FFFD

 E64088

 E6FFFF

 E6297B

 E6126D

 E60063

Harmonies

Analogous

The Analogous color harmony consists of three colors that are next to each other on the color wheel.



D5B7DC



E6B3C9



ECB3B4

Triad

The Triadic color harmony groups three colors that are evenly spaced from another and form a triangle on the color wheel.



E6B3C9



C2C49A



8CCAEO

Complementary

The Complementary color scheme is a pair of colors which are on the opposite of each other on the color wheel.



E6B3C9



B3E6D0

Split Complementary

Split-complementary colors differ from the complementary color scheme. The scheme consists of three colors, the original color and two neighbors of the complement color.



89CDCE



E6B3C9



ABC9A6

Square

The Square scheme is like the rectangle color scheme, but the four colors are evenly spaced on the color wheel.



E6B3C9



D8BD99



95CCB9



A0C5E9

Rectangle

The Rectangle color scheme consists of four colors that form a rectangle on the color wheel.



E6B3C9



EAB5A8



95CCB9



89CBDB

Sweetspot

The Sweet Spot groups the original color and five complimentary colors.



E6B3C9



FFEDF5



D0B3E6



80757A



000000



808080

Same Dimension

The Same Dimension uses a secret algorithm to generate beautiful new colors.



E6B3C9



FFBAD8



E6B6B3



73676C



B3004D



330016

Inverse Universe

The Inverse Universe completely reimagines the original color for something new.



E6B3C9



FFBAD8



B3E3E6



73676C



B3004D



330016

Previews

White Background



This preview shows how the Hex color E6B3C9 looks on a white background.

Color Contrast Check

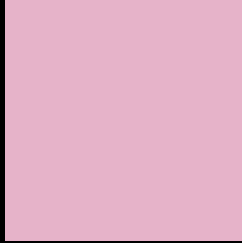
Large Text (above 18pt) WCAG AA × Fail

Any Text WCAG AA × Fail

Large Text (above 18pt) WCAG AAA × Fail

Any Text WCAG AAA × Fail

Black Background



This preview shows how the Hex color E6B3C9 looks on a black background.

Color Contrast Check

Large Text (above 18pt) WCAG AA ✓ Pass

Any Text WCAG AA ✓ Pass

Large Text (above 18pt) WCAG AAA ✓ Pass

Any Text WCAG AAA ✓ Pass

If you want to check with other color combinations, try the [Color Contrast Checker](#).

Hex E6B3C9 Background



This preview shows how black text looks on a background with the Hex color E6B3C9.

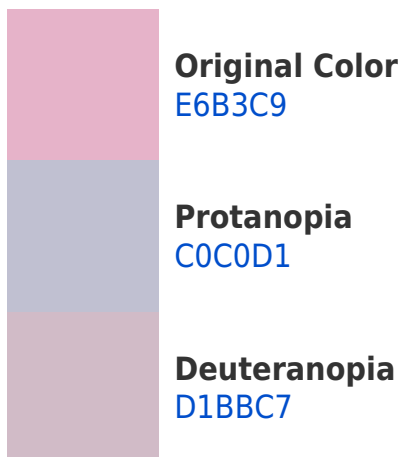


This preview shows how white text looks on a background with the Hex color E6B3C9.

Color Blindness Simulation

Color vision deficiency is a very complex topic, and I could not describe the different causes any better than Wikipedia does, so if you want to learn more, you should check out their [article about color blindness](#).

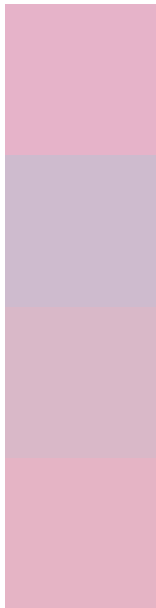
Dichromacy





Tritanopia
E5B4C2

Trichromacy



Original Color
E6B3C9

Protanomaly
CEBBCE

Deuteranomaly
D9B8C8

Tritanomaly
E5B4C5

Monochromacy



Original Color
E6B3C9

Achromatopsia
C5C5C5

Achromatomaly
D1BEC6

CSS Examples

Text

The CSS property to change the color of the text to Hex E6B3C9 is called "color". The color property can be set on classes, ids or directly on the HTML element.

This example shows how text in the color #E6B3C9 looks like.

```
.text, #text, p{  
    color:#E6B3C9  
}
```

If you want to add a text shadow in that color use the text-shadow property, you can generate a text shadow directly with our [CSS Text Shadow Generator](#).

Here you see how black text with a 4 pixel #E6B3C9 colored shadow looks like.

```
.shadow{ text-shadow: 4px 4px 2px #E6B3C9
}
```

Border

The CSS property to change the border of an element to Hex E6B3C9 is called "border". The border property can be set on classes, ids or directly on the HTML element.

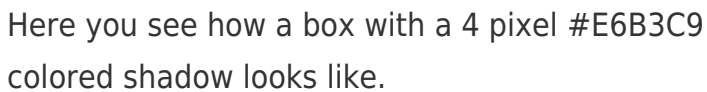
This example shows the color as border, it can be applied via the CSS property "border" or "border-color".

```
.border, #border, table{ border:4px solid
#E6B3C9 }
```

If only the border color should be changed use the property `border-color`.

```
.border{ border-color:#E6B3C9 }
```

If you want to add a box shadow in that color use:



Here you see how a box with a 4 pixel #E6B3C9 colored shadow looks like.

```
.boxshadow{ -moz-box-shadow:4px 4px 4px  
4px #E6B3C9; -webkit-box-shadow:4px 4px  
4px 4px #E6B3C9; box-shadow:4px 4px 4px  
4px #E6B3C9 }
```

Background

The CSS property to change the background color of an element to Hex E6B3C9 is called "background". The background property can be set on classes, ids or directly on the HTML element.

```
.background, #background, body{  
background:#E6B3C9 }
```

If only the background color should be changed can be used:

```
.background{ background-color:#E6B3C9 }
```

This example shows the color as background, it is applied via the CSS property "background".

To optimize and compress your CSS code, you can use our [online CSS compressor and optimizer](#) based on csstidy. If you want to create a linear or radial gradient as background or border, check our [CSS Gradient Generator](#).

Hey! You found this booklet interesting? Support Converting Colors with the new Membership Option!

The pro membership hides all ads, plus gives you double the colors in the color bucket, and more awesome pro features!

[Learn more, Memberships starting at \\$2.50/m!](#)

**Follow me
on Twitter!**

@ConvertingColor