

# Converting Colors

Hex(E6B9AD)

Have a look what the booklet for  
Hex(E6B9AD) contains.

<b>Hex(E6B9AD)</b> .....	3
<i><b>Conversions</b></i> .....	4
<i><b>Details</b></i> .....	6
<i><b>Harmonies</b></i> .....	11
<i><b>Previews</b></i> .....	23
<i><b>Color Blindness Simulation</b></i> .....	26
<i><b>CSS Examples</b></i> .....	29

# **Color**

**Hex(E6B9AD)**

# Conversions

## Conversions Part 1

Format	Color
Hex	E6B9AD
RGB	230, 185, 173
RGB Percent	90%, 73%, 68%
CMY	0.0980, 0.2745, 0.3216
CMYK	0.00, 0.20, 0.25, 0.10
HSL	13°, 53%, 79%
HSV	13°, 25%, 90%
XYZ	57.5249, 54.5380, 47.0302
YIQ	197.0870, 30.6720, 5.8080

# Conversions

## Conversions Part 2

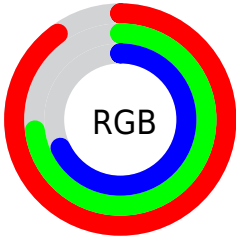
Format	Color
R <sub>Y</sub> B	230, 188, 173
Decimal	15120813
CIE Lab	78.77, 14.43, 12.22
CIE LCh	79, 18.908, 40.269
Yxy	54.5380, 0.3616, 0.3428
Android (android.graphics.Color)	4293310893 (0xFFE6B9AD)
YUV	197.0870, -11.8749, 28.8647
Hunter-Lab	73.8499, 9.8042, 13.9370

# Details

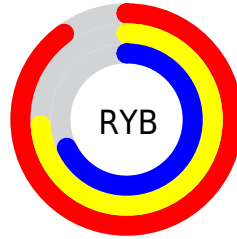
The Hex color **E6B9AD** is a light color, and the websafe version is hex **FFCCCC**. A complement of this color would be **ADDAE6**, and the grayscale version is **C5C5C5**.

A 20% lighter version of the original color is **FFF1E4**, and **AE8479** is the 20% darker color. If you saturate the color by 10%, you get **E6A796**, and if you desaturate by 10%, it is **E6CBC4**.

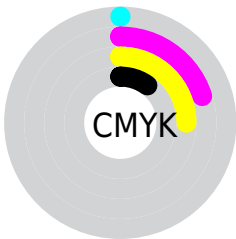
# Distribution



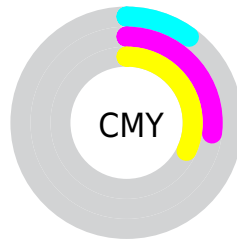
- Red (90%)
- Green (73%)
- Blue (68%)



- Red (90%)
- Yellow (74%)
- Blue (68%)



- Cyan (0%)
- Magenta (20%)
- Yellow (25%)
- Black (10%)



- Cyan (10%)
- Magenta (27%)
- Yellow (32%)

# Brightness & Saturation Gradients

These gradients show how the Hex color E6B9AD changes by changing the brightness by 10 percent. The first figure shows a shift by +10% for each color and the second figure -10%.

Similar to the brightness gradients but the following saturation gradients show a change of the Hex color E6B9AD by changing the saturation by 10% instead.



 E6B9AD

 E6B9AD

FFFFFF

 C99E92

 FFF1E4

 AE8479

 926B60

 785248

 5E3B32

 46251D

 2F1003

 140000

 000000

 E6B9AD

 E6B9AD

 E6A796

 E6CBC4

 E6957F

 E6DDDB

 E68368

 E6EFF2

 E67051

 E6FFFF

 E65E3A

 E64C23

 E63A0C

 E63000

# Harmonies

## Analogous

The Analogous color harmony consists of three colors that are next to each other on the color wheel.



E8B7BD



E6B9AD



DBBEA2

# Triad

The Triadic color harmony groups three colors that are evenly spaced from another and form a triangle on the color wheel.



E6B9AD



A3CCB7



B7C2E5

# Complementary

The Complementary color scheme is a pair of colors which are on the opposite of each other on the color wheel.



E6B9AD



ADDAE6

# Split Complementary

Split-complementary colors differ from the complementary color scheme. The scheme consists of three colors, the original color and two neighbors of the complement color.



A2C8E4



E6B9AD



97CDC9

# Square

The Square scheme is like the rectangle color scheme, but the four colors are evenly spaced on the color wheel.



E6B9AD



B7C9A8



95CCD9



CEBDDE

# Rectangle

The Rectangle color scheme consists of four colors that form a rectangle on the color wheel.



E6B9AD



D1C2A0



95CCD9



AFC4E6



# Sweetspot

The Sweet Spot groups the original color and five complimentary colors.



E6B9AD



FFF1ED



E6ADDB



807775



000000



808080



# Same Dimension

The Same Dimension uses a secret algorithm to generate beautiful new colors.



E6B9AD



FFC3B3



E6D5AD



736A67



B32600



330B00

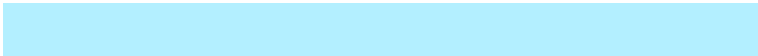


# Inverse Universe

The Inverse Universe completely reimagines the original color for something new.



ADDAE6



B3EFFF



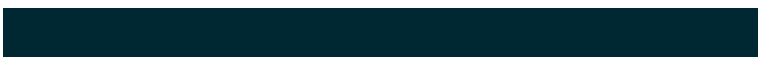
ADBEE6



677073



008DB3



002833



# Previews

## White Background



This preview shows how the Hex color E6B9AD looks on a white background.

## Color Contrast Check

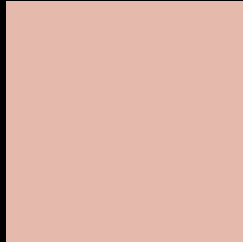
Large Text (above 18pt) WCAG AA × Fail

Any Text WCAG AA × Fail

Large Text (above 18pt) WCAG AAA × Fail

Any Text WCAG AAA × Fail

# Black Background



This preview shows how the Hex color E6B9AD looks on a black background.

## Color Contrast Check

Large Text (above 18pt) WCAG AA ✓ Pass

Any Text WCAG AA ✓ Pass

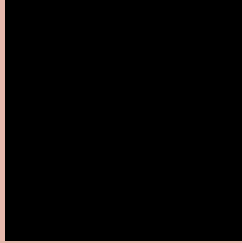
Large Text (above 18pt) WCAG AAA ✓ Pass

Any Text WCAG AAA ✓ Pass

If you want to check with other color combinations, try the [Color Contrast Checker](#).



## Hex E6B9AD Background



This preview shows how black text looks on a background with the Hex color E6B9AD.

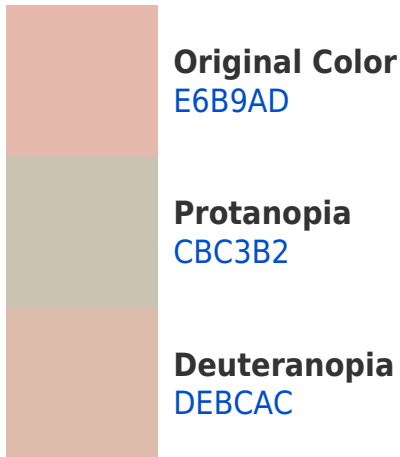


This preview shows how white text looks on a background with the Hex color E6B9AD.

# Color Blindness Simulation

Color vision deficiency is a very complex topic, and I could not describe the different causes any better than Wikipedia does, so if you want to learn more, you should check out their [article about color blindness](#).

## Dichromacy





**Tritanopia**  
E9B6C4

# Trichromacy



**Original Color**  
E6B9AD

**Protanomaly**  
D5BFB0

**Deuteranomaly**  
E1BBAC

**Tritanomaly**  
E8B7BC

# Monochromacy



**Original Color**  
E6B9AD

**Achromatopsia**  
C5C5C5

**Achromatomaly**  
D1C1BC

# CSS Examples

## Text

The CSS property to change the color of the text to Hex E6B9AD is called "color". The color property can be set on classes, ids or directly on the HTML element.

This example shows how text in the color #E6B9AD looks like.

```
.text, #text, p{  
    color:#E6B9AD  
}
```

If you want to add a text shadow in that color use the text-shadow property, you can generate a text shadow directly with our [CSS Text Shadow Generator](#).

Here you see how black text with a 4 pixel #E6B9AD colored shadow looks like.

```
.shadow{ text-shadow: 4px 4px 2px #E6B9AD
}
```

## Border

The CSS property to change the border of an element to Hex E6B9AD is called "border". The border property can be set on classes, ids or directly on the HTML element.

This example shows the color as border, it can be applied via the CSS property "border" or "border-color".

```
.border, #border, table{ border:4px solid
#E6B9AD }
```

If only the border color should be changed use the property `border-color`.

```
.border{ border-color:#E6B9AD }
```

If you want to add a box shadow in that color use:

Here you see how a box with a 4 pixel #E6B9AD colored shadow looks like.

```
.boxshadow{ -moz-box-shadow:4px 4px 4px  
4px #E6B9AD; -webkit-box-shadow:4px 4px  
4px 4px #E6B9AD; box-shadow:4px 4px 4px  
4px #E6B9AD }
```

# Background

The CSS property to change the background color of an element to Hex E6B9AD is called "background". The background property can be set on classes, ids or directly on the HTML element.

```
.background, #background, body{  
background:#E6B9AD }
```

If only the background color should be changed can be used:

```
.background{ background-color:#E6B9AD }
```

This example shows the color as background, it is applied via the CSS property "background".

To optimize and compress your CSS code, you can use our [online CSS compressor and optimizer](#) based on csstidy. If you want to create a linear or radial gradient as background or border, check our [CSS Gradient Generator](#).



Hey! You found this booklet interesting? Support Converting Colors with the new Membership Option!

The pro membership hides all ads, plus gives you double the colors in the color bucket, and more awesome pro features!

**[Learn more, Memberships starting at \\$2.50/m!](#)**

**Follow me  
on Twitter!**

@ConvertingColor