

Converting Colors

Hex(E6BAE2)

Have a look what the booklet for
Hex(E6BAE2) contains.

Hex(E6BAE2)	3
<i>Conversions</i>	4
<i>Details</i>	6
<i>Harmonies</i>	11
<i>Previews</i>	23
<i>Color Blindness Simulation</i>	26
<i>CSS Examples</i>	29

Color

Hex(E6BAE2)

Conversions

Conversions Part 1

Format	Color
Hex	E6BAE2
RGB	230, 186, 226
RGB Percent	90%, 73%, 89%
CMY	0.0980, 0.2706, 0.1137
CMYK	0.00, 0.19, 0.02, 0.10
HSL	305°, 47%, 82%
HSV	305°, 19%, 90%
XYZ	63.9195, 57.4318, 79.6680
YIQ	203.7160, 13.3840, 21.7680

Conversions

Conversions Part 2

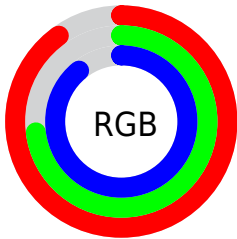
Format	Color
R _Y B	230, 186, 226
Decimal	15121122
CIE Lab	80.42, 22.45, -13.98
CIE LCh	80, 26.445, 328.096
Yxy	57.4318, 0.3180, 0.2857
Android (android.graphics.Color)	4293311202 (0xFFE6BAE2)
YUV	203.7160, 10.9860, 23.0511
Hunter-Lab	75.7838, 17.9335, -9.2802

Details

The Hex color **E6BAE2** is a light color, and the websafe version is hex **FFCCFF**. A complement of this color would be **BAE6BE**, and the grayscale version is **CCCCCC**.

A 20% lighter version of the original color is **FFF2FF**, and **AE85AB** is the 20% darker color. If you saturate the color by 10%, you get **E6A3E0**, and if you desaturate by 10%, it is **E6D1E4**.

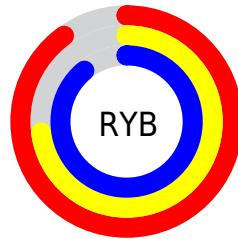
Distribution



Red (90%)

Green (73%)

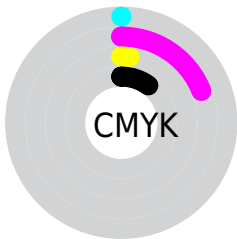
Blue (89%)



Red (90%)

Yellow (73%)

Blue (89%)

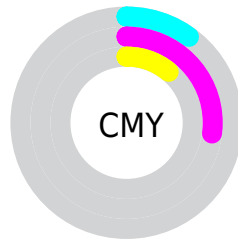


Cyan (0%)

Magenta (19%)

Yellow (2%)

Black (10%)



Cyan (10%)

Magenta (27%)

Yellow (11%)

Brightness & Saturation Gradients

These gradients show how the Hex color E6BAE2 changes by changing the brightness by 10 percent. The first figure shows a shift by +10% for each color and the second figure -10%.

Similar to the brightness gradients but the following saturation gradients show a change of the Hex color E6BAE2 by changing the saturation by 10% instead.

 E6BAE2

 E6BAE2

FFFFFF

 CA9FC6

 FFF2FF

 AE85AB

 936B90

 795376

 603B5E

 482446

 300F30

 1F001B

 000000

 E6BAE2

 E6BAE2

 E6A3E0

 E6D1E4

 E68CDE

 E6E8E6

 E675DC

 E6FFE8

 E65EDA

 E6FFEA

 E647D8

 E6FFEC

 E630D5

 E6FFEF

 E619D3

 E6FFF1

 E602D1

 E6FFF3

 E600D1

 E6FFF5

Harmonies

Analogous

The Analogous color harmony consists of three colors that are next to each other on the color wheel.



CAC2F3



E6BAE2



F7B6CA

Triad

The Triadic color harmony groups three colors that are evenly spaced from another and form a triangle on the color wheel.



E6BAE2



DBC596



80D5DE

Complementary

The Complementary color scheme is a pair of colors which are on the opposite of each other on the color wheel.



E6BAE2



BAE6BE

Split Complementary

Split-complementary colors differ from the complementary color scheme. The scheme consists of three colors, the original color and two neighbors of the complement color.



8CD5C5



E6BAE2



C1CD9C

Square

The Square scheme is like the rectangle color scheme, but the four colors are evenly spaced on the color wheel.



E6BAE2



F0BD9E



A5D3AD



8BD1F1

Rectangle

The Rectangle color scheme consists of four colors that form a rectangle on the color wheel.



E6BAE2



FAB6B9



A5D3AD



82D5D6

Sweetspot

The Sweet Spot groups the original color and five complimentary colors.



E6BAE2



FFF0FE



BEBAE6



80777F



000000



808080

Same Dimension

The Same Dimension uses a secret algorithm to generate beautiful new colors.



E6BAE2



FFC4FA



E6BACC



736772



B300A2



33002E

Inverse Universe

The Inverse Universe completely reimagines the original color for something new.



E6BAE2



FFC4FA



BAE6D4



736772



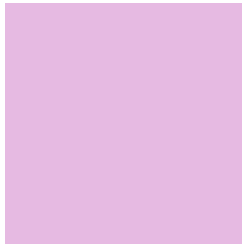
B300A2



33002E

Previews

White Background



This preview shows how the Hex color E6BAE2 looks on a white background.

Color Contrast Check

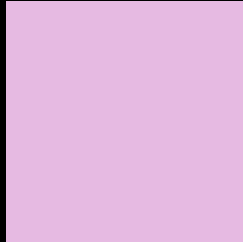
Large Text (above 18pt) WCAG AA × Fail

Any Text WCAG AA × Fail

Large Text (above 18pt) WCAG AAA × Fail

Any Text WCAG AAA × Fail

Black Background



This preview shows how the Hex color E6BAE2 looks on a black background.

Color Contrast Check

Large Text (above 18pt) WCAG AA ✓ Pass

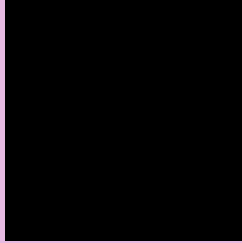
Any Text WCAG AA ✓ Pass

Large Text (above 18pt) WCAG AAA ✓ Pass

Any Text WCAG AAA ✓ Pass

If you want to check with other color combinations, try the [Color Contrast Checker](#).

Hex E6BAE2 Background



This preview shows how black text looks on a background with the Hex color E6BAE2.

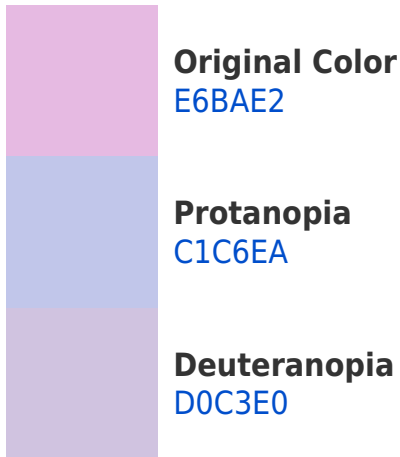


This preview shows how white text looks on a background with the Hex color E6BAE2.

Color Blindness Simulation

Color vision deficiency is a very complex topic, and I could not describe the different causes any better than Wikipedia does, so if you want to learn more, you should check out their [article about color blindness](#).

Dichromacy





Tritanopia
E3BECD

Trichromacy



Original Color
E6BAE2



Protanomaly
CEC2E7



Deuteranomaly
D8C0E1

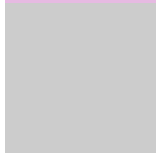


Tritanomaly
E4BDD5

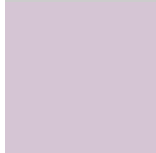
Monochromacy



Original Color
E6BAE2



Achromatopsia
CCCCCC



Achromatomaly
D5C5D4

CSS Examples

Text

The CSS property to change the color of the text to Hex E6BAE2 is called "color". The color property can be set on classes, ids or directly on the HTML element.

This example shows how text in the color #E6BAE2 looks like.

```
.text, #text, p{  
    color:#E6BAE2  
}
```

If you want to add a text shadow in that color use the text-shadow property, you can generate a text shadow directly with our [CSS Text Shadow Generator](#).

Here you see how black text with a 4 pixel #E6BAE2 colored shadow looks like.

```
.shadow{ text-shadow: 4px 4px 2px #E6BAE2
}
```

Border

The CSS property to change the border of an element to Hex E6BAE2 is called "border". The border property can be set on classes, ids or directly on the HTML element.

This example shows the color as border, it can be applied via the CSS property "border" or "border-color".

```
.border, #border, table{ border:4px solid
#E6BAE2 }
```

If only the border color should be changed use the property `border-color`.

```
.border{ border-color:#E6BAE2 }
```

If you want to add a box shadow in that color use:

Here you see how a box with a 4 pixel #E6BAE2 colored shadow looks like.

```
.boxshadow{ -moz-box-shadow:4px 4px 4px  
4px #E6BAE2; -webkit-box-shadow:4px 4px  
4px 4px #E6BAE2; box-shadow:4px 4px 4px  
4px #E6BAE2 }
```

Background

The CSS property to change the background color of an element to Hex E6BAE2 is called "background". The background property can be set on classes, ids or directly on the HTML element.

```
.background, #background, body{  
background:#E6BAE2 }
```

If only the background color should be changed can be used:

```
.background{ background-color:#E6BAE2 }
```

This example shows the color as background, it is applied via the CSS property "background".

To optimize and compress your CSS code, you can use our [online CSS compressor and optimizer](#) based on csstidy. If you want to create a linear or radial gradient as background or border, check our [CSS Gradient Generator](#).

Hey! You found this booklet interesting? Support Converting Colors with the new Membership Option!

The pro membership hides all ads, plus gives you double the colors in the color bucket, and more awesome pro features!

[Learn more, Memberships starting at \\$2.50/m!](#)

**Follow me
on Twitter!**

@ConvertingColor