

Converting Colors

Hex(E6BCBC)

Have a look what the booklet for
Hex(E6BCBC) contains.

Hex(E6BCBC)	3
<i>Conversions</i>	4
<i>Details</i>	6
<i>Harmonies</i>	11
<i>Previews</i>	23
<i>Color Blindness Simulation</i>	26
<i>CSS Examples</i>	29

Color

Hex(E6BCBC)

Conversions

Conversions Part 1

Format	Color
Hex	E6BCBC
RGB	230, 188, 188
RGB Percent	90%, 74%, 74%
CMY	0.0980, 0.2627, 0.2627
CMYK	0.00, 0.18, 0.18, 0.10
HSL	0°, 46%, 82%
HSV	0°, 18%, 90%
XYZ	59.6934, 56.4203, 55.3210
YIQ	200.5580, 25.0320, 8.9040

Conversions

Conversions Part 2

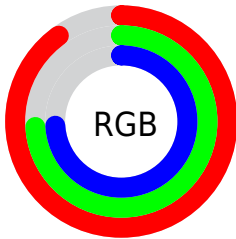
Format	Color
R _Y B	230, 188, 188
Decimal	15121596
CIE Lab	79.85, 15.03, 5.67
CIE LCh	80, 16.064, 20.678
Yxy	56.4203, 0.3482, 0.3291
Android (android.graphics.Color)	4293311676 (0xFFE6BCBC)
YUV	200.5580, -6.1911, 25.8206
Hunter-Lab	75.1134, 10.4074, 8.9124

Details

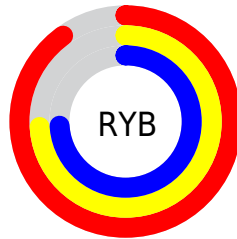
The Hex color **E6BCBC** is a light color, and the websafe version is hex **FFCCCC**. A complement of this color would be **BCE6E6**, and the grayscale version is **C9C9C9**.

A 20% lighter version of the original color is **FFF4F4**, and **AE8787** is the 20% darker color. If you saturate the color by 10%, you get **E6A5A5**, and if you desaturate by 10%, it is **E6D3D3**.

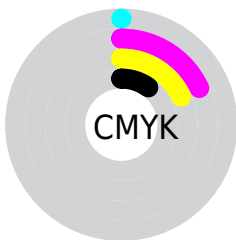
Distribution



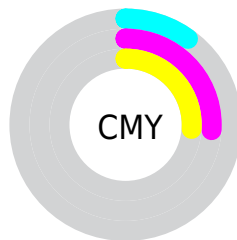
- Red (90%)
- Green (74%)
- Blue (74%)



- Red (90%)
- Yellow (74%)
- Blue (74%)



- Cyan (0%)
- Magenta (18%)
- Yellow (18%)
- Black (10%)



- Cyan (10%)
- Magenta (26%)
- Yellow (26%)

Brightness & Saturation Gradients

These gradients show how the Hex color E6BCBC changes by changing the brightness by 10 percent. The first figure shows a shift by +10% for each color and the second figure -10%.

Similar to the brightness gradients but the following saturation gradients show a change of the Hex color E6BCBC by changing the saturation by 10% instead.

 E6BCBC

FFFFFF

 FFF4F4

 E6BCBC

 CAA1A1

 AE8787

 936D6E

 795555

 5F3D3E

 472728

 2F1214

 1C0001

 000000

 E6BCBC

 E6BCBC

 E6A5A5

 E6D3D3

 E68E8E

 E6EAEA

 E67777

 E6FFFF

 E66060

 E64949

 E63232

 E61B1B

 E60404

 E60000

Harmonies

Analogous

The Analogous color harmony consists of three colors that are next to each other on the color wheel.



E2BCCB



E6BCBC



E2BFAF

Triad

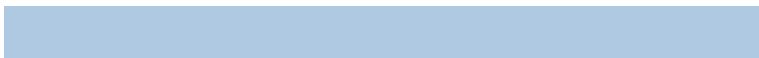
The Triadic color harmony groups three colors that are evenly spaced from another and form a triangle on the color wheel.



E6BCBC



B6CCB3



B0C9E3

Complementary

The Complementary color scheme is a pair of colors which are on the opposite of each other on the color wheel.



E6BCBC



BCE6E6

Split Complementary

Split-complementary colors differ from the complementary color scheme. The scheme consists of three colors, the original color and two neighbors of the complement color.



A3CDDD



E6BCBC



A7CFC1

Square

The Square scheme is like the rectangle color scheme, but the four colors are evenly spaced on the color wheel.



E6BCBC



C7C8AA



9FCFD0



C3C4E2

Rectangle

The Rectangle color scheme consists of four colors that form a rectangle on the color wheel.



E6BCBC



DBC2AA



9FCFD0



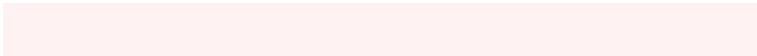
ABCAE2

Sweetspot

The Sweet Spot groups the original color and five complimentary colors.



E6BCBC



FFF2F2



E6BCE6



807878



000000



808080

Same Dimension

The Same Dimension uses a secret algorithm to generate beautiful new colors.



E6BCBC



FFC7C7



E6D1BC



736767



B30000



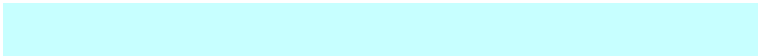
330000

Inverse Universe

The Inverse Universe completely reimagines the original color for something new.



BCE6E6



C7FFFF



BCD1E6



677373



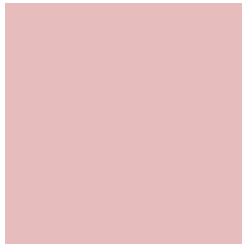
00B3B3



003333

Previews

White Background



This preview shows how the Hex color E6BCBC looks on a white background.

Color Contrast Check

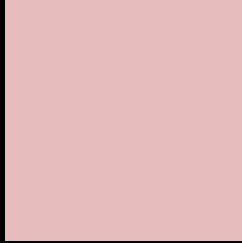
Large Text (above 18pt) WCAG AA × Fail

Any Text WCAG AA × Fail

Large Text (above 18pt) WCAG AAA × Fail

Any Text WCAG AAA × Fail

Black Background



This preview shows how the Hex color E6BCBC looks on a black background.

Color Contrast Check

Large Text (above 18pt) WCAG AA ✓ Pass

Any Text WCAG AA ✓ Pass

Large Text (above 18pt) WCAG AAA ✓ Pass

Any Text WCAG AAA ✓ Pass

If you want to check with other color combinations, try the [Color Contrast Checker](#).

Hex E6BCBC Background



This preview shows how black text looks on a background with the Hex color E6BCBC.



This preview shows how white text looks on a background with the Hex color E6BCBC.

Color Blindness Simulation

Color vision deficiency is a very complex topic, and I could not describe the different causes any better than Wikipedia does, so if you want to learn more, you should check out their [article about color blindness](#).


Dichromacy



Original Color
E6BCBC

Protanopia
CBC5C1

Deuteranopia
DDBFBB



Tritanopia
E8BAC9

Trichromacy



Original Color
E6BCBC

Protanomaly
D5C2BF

Deuteranomaly
E0BEBB

Tritanomaly
E7BBC4

Monochromacy



Original Color
E6BCBC

Achromatopsia
C9C9C9

Achromatomaly
D4C4C4

CSS Examples

Text

The CSS property to change the color of the text to Hex E6BCBC is called "color". The color property can be set on classes, ids or directly on the HTML element.

This example shows how text in the color #E6BCBC looks like.

```
.text, #text, p{  
    color:#E6BCBC  
}
```

If you want to add a text shadow in that color use the text-shadow property, you can generate a text shadow directly with our [CSS Text Shadow Generator](#).

Here you see how black text with a 4 pixel #E6BCBC colored shadow looks like.

```
.shadow{ text-shadow: 4px 4px 2px #E6BCBC  
}
```

Border

The CSS property to change the border of an element to Hex E6BCBC is called "border". The border property can be set on classes, ids or directly on the HTML element.

This example shows the color as border, it can be applied via the CSS property "border" or "border-color".

```
.border, #border, table{ border:4px solid  
#E6BCBC }
```

If only the border color should be changed use the property `border-color`.

```
.border{ border-color:#E6BCBC }
```

If you want to add a box shadow in that color use:

Here you see how a box with a 4 pixel #E6BCBC colored shadow looks like.

```
.boxshadow{ -moz-box-shadow:4px 4px 4px  
4px #E6BCBC; -webkit-box-shadow:4px 4px  
4px 4px #E6BCBC; box-shadow:4px 4px 4px  
4px #E6BCBC }
```

Background

The CSS property to change the background color of an element to Hex E6BCBC is called "background". The background property can be set on classes, ids or directly on the HTML element.

```
.background, #background, body{  
background:#E6BCBC }
```

If only the background color should be changed can be used:

```
.background{ background-color:#E6BCBC }
```

This example shows the color as background, it is applied via the CSS property "background".

To optimize and compress your CSS code, you can use our [online CSS compressor and optimizer](#) based on csstidy. If you want to create a linear or radial gradient as background or border, check our [CSS Gradient Generator](#).

Hey! You found this booklet interesting? Support Converting Colors with the new Membership Option!

The pro membership hides all ads, plus gives you double the colors in the color bucket, and more awesome pro features!

[Learn more, Memberships starting at \\$2.50/m!](#)

**Follow me
on Twitter!**

@ConvertingColor