

Converting Colors

Hex(E6BEB2)

Have a look what the booklet for
Hex(E6BEB2) contains.

Hex(E6BEB2)	3
<i>Conversions</i>	4
<i>Details</i>	6
<i>Harmonies</i>	11
<i>Previews</i>	23
<i>Color Blindness Simulation</i>	26
<i>CSS Examples</i>	29

Color

Hex(E6BEB2)

Conversions

Conversions Part 1

Format	Color
Hex	E6BEB2
RGB	230, 190, 178
RGB Percent	90%, 75%, 70%
CMY	0.0980, 0.2549, 0.3020
CMYK	0.00, 0.17, 0.23, 0.10
HSL	14°, 51%, 80%
HSV	14°, 23%, 90%
XYZ	59.0825, 56.8643, 49.9814
YIQ	200.5920, 27.6920, 4.7480

Conversions

Conversions Part 2

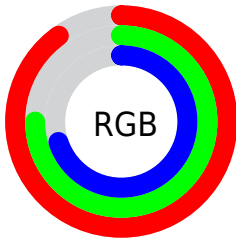
Format	Color
RYB	230, 194, 178
Decimal	15122098
CIELab	80.10, 12.48, 11.41
CIELCh	80, 16.914, 42.440
Yxy	56.8643, 0.3561, 0.3427
Android (android.graphics.Color)	4293312178 (0xFFE6BEB2)
YUV	200.5920, -11.1379, 25.7908
Hunter-Lab	75.4084, 7.8900, 13.4879

Details

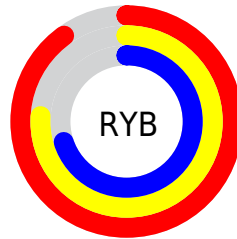
The Hex color **E6BEB2** is a light color, and the websafe version is hex **FFCCCC**. A complement of this color would be **B2DAE6**, and the grayscale version is **C9C9C9**.

A 20% lighter version of the original color is **FFF6EA**, and **AE897D** is the 20% darker color. If you saturate the color by 10%, you get **E6AC9B**, and if you desaturate by 10%, it is **E6D0C9**.

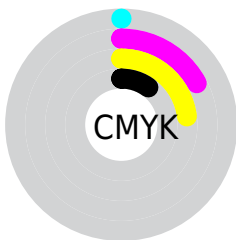
Distribution



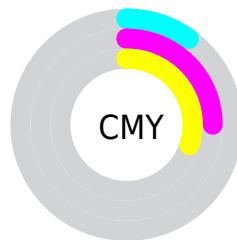
- Red (90%)
- Green (75%)
- Blue (70%)



- Red (90%)
- Yellow (76%)
- Blue (70%)



- Cyan (0%)
- Magenta (17%)
- Yellow (23%)
- Black (10%)



- Cyan (10%)
- Magenta (25%)
- Yellow (30%)

Brightness & Saturation Gradients

These gradients show how the Hex color E6BEB2 changes by changing the brightness by 10 percent. The first figure shows a shift by +10% for each color and the second figure -10%.

Similar to the brightness gradients but the following saturation gradients show a change of the Hex color E6BEB2 by changing the saturation by 10% instead.

 E6BEB2

 E6BEB2

FFFFFF

 CAA397

 FFF6EA

 AE897D

 936F64

 78574C

 5F3F36

 462920

 2F140A

 1A0001

 000000

 E6BEB2

 E6BEB2

 E6AC9B

 E6D0C9

 E69B84

 E6E1E0

 E6896D

 E6F3F7

 E67756

 E6FFFF

 E6663F

 E65428

 E64211

 E63500

Harmonies

Analogous

The Analogous color harmony consists of three colors that are next to each other on the color wheel.



E8BCC0



E6BEB2



DCC2A9

Triad

The Triadic color harmony groups three colors that are evenly spaced from another and form a triangle on the color wheel.



E6BEB2



AACFBD



BEC6E5

Complementary

The Complementary color scheme is a pair of colors which are on the opposite of each other on the color wheel.



E6BEB2



B2DAE6

Split Complementary

Split-complementary colors differ from the complementary color scheme. The scheme consists of three colors, the original color and two neighbors of the complement color.



ABCBE4



E6BEB2



9FD0CD

Square

The Square scheme is like the rectangle color scheme, but the four colors are evenly spaced on the color wheel.



E6BEB2



BACCAF



9FCEDB



D2C1DE

Rectangle

The Rectangle color scheme consists of four colors that form a rectangle on the color wheel.



E6BEB2



D2C6A7



9FCEDB



B7C8E6

Sweetspot

The Sweet Spot groups the original color and five complimentary colors.



E6BEB2



FFF1ED



E6B2DB



807875



000000



808080

Same Dimension

The Same Dimension uses a secret algorithm to generate beautiful new colors.



E6BEB2



FFCABA



E6D7B2



736A67



B32900



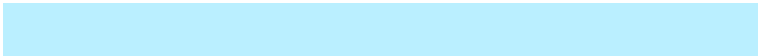
330C00

Inverse Universe

The Inverse Universe completely reimagines the original color for something new.



B2DAE6



BAEFFF



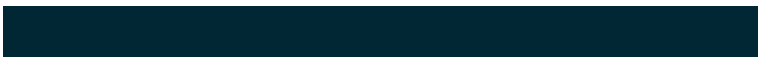
B2C1E6



677073



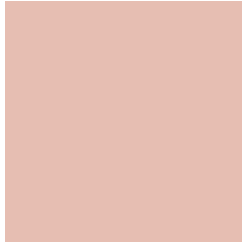
0089B3



002733

Previews

White Background



This preview shows how the Hex color E6BEB2 looks on a white background.

Color Contrast Check

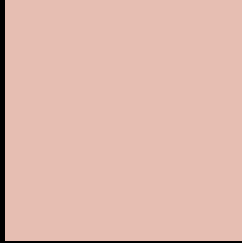
Large Text (above 18pt) WCAG AA × Fail

Any Text WCAG AA × Fail

Large Text (above 18pt) WCAG AAA × Fail

Any Text WCAG AAA × Fail

Black Background



This preview shows how the Hex color E6BEB2 looks on a black background.

Color Contrast Check

Large Text (above 18pt) WCAG AA ✓ Pass

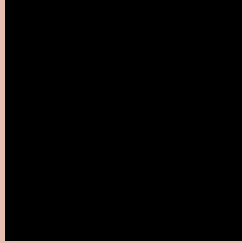
Any Text WCAG AA ✓ Pass

Large Text (above 18pt) WCAG AAA ✓ Pass

Any Text WCAG AAA ✓ Pass

If you want to check with other color combinations, try the [Color Contrast Checker](#).

Hex E6BEB2 Background



This preview shows how black text looks on a background with the Hex color E6BEB2.

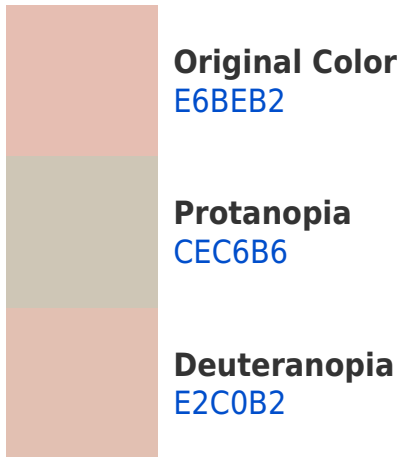


This preview shows how white text looks on a background with the Hex color E6BEB2.

Color Blindness Simulation

Color vision deficiency is a very complex topic, and I could not describe the different causes any better than Wikipedia does, so if you want to learn more, you should check out their [article about color blindness](#).

Dichromacy





Tritanopia
E9BBC9

Trichromacy



Original Color
E6BEB2

Protanomaly
D7C3B5

Deuteranomaly
E3BFB2

Tritanomaly
E8BCC1

Monochromacy



Original Color
E6BEB2

Achromatopsia
C9C9C9

Achromatomaly
D4C5C1

CSS Examples

Text

The CSS property to change the color of the text to Hex E6BEB2 is called "color". The color property can be set on classes, ids or directly on the HTML element.

This example shows how text in the color #E6BEB2 looks like.

```
.text, #text, p{  
    color:#E6BEB2  
}
```

If you want to add a text shadow in that color use the text-shadow property, you can generate a text shadow directly with our [CSS Text Shadow Generator](#).

Here you see how black text with a 4 pixel #E6BEB2 colored shadow looks like.

```
.shadow{ text-shadow: 4px 4px 2px #E6BEB2
}
```

Border

The CSS property to change the border of an element to Hex E6BEB2 is called "border". The border property can be set on classes, ids or directly on the HTML element.

This example shows the color as border, it can be applied via the CSS property "border" or "border-color".

```
.border, #border, table{ border:4px solid
#E6BEB2 }
```

If only the border color should be changed use the property `border-color`.

```
.border{ border-color:#E6BEB2 }
```

If you want to add a box shadow in that color use:

Here you see how a box with a 4 pixel #E6BEB2 colored shadow looks like.

```
.boxshadow{ -moz-box-shadow:4px 4px 4px  
4px #E6BEB2; -webkit-box-shadow:4px 4px  
4px 4px #E6BEB2; box-shadow:4px 4px 4px  
4px #E6BEB2 }
```

Background

The CSS property to change the background color of an element to Hex E6BEB2 is called "background". The background property can be set on classes, ids or directly on the HTML element.

```
.background, #background, body{  
background:#E6BEB2 }
```

If only the background color should be changed can be used:

```
.background{ background-color:#E6BEB2 }
```

This example shows the color as background, it is applied via the CSS property "background".

To optimize and compress your CSS code, you can use our [online CSS compressor and optimizer](#) based on csstidy. If you want to create a linear or radial gradient as background or border, check our [CSS Gradient Generator](#).

Hey! You found this booklet interesting? Support Converting Colors with the new Membership Option!

The pro membership hides all ads, plus gives you double the colors in the color bucket, and more awesome pro features!

[Learn more, Memberships starting at \\$2.50/m!](#)

**Follow me
on Twitter!**

@ConvertingColor