

# Converting Colors

Hex(E6BED6)

Have a look what the booklet for  
Hex(E6BED6) contains.

<b>Hex(E6BED6)</b> .....	3
<b><i>Conversions</i></b> .....	4
<b><i>Details</i></b> .....	6
<b><i>Harmonies</i></b> .....	11
<b><i>Previews</i></b> .....	23
<b><i>Color Blindness Simulation</i></b> .....	26
<b><i>CSS Examples</i></b> .....	29

# **Color**

**Hex(E6BED6)**

# Conversions

## Conversions Part 1

Format	Color
Hex	E6BED6
RGB	230, 190, 214
RGB Percent	90%, 75%, 84%
CMY	0.0980, 0.2549, 0.1608
CMYK	0.00, 0.17, 0.07, 0.10
HSL	324°, 44%, 82%
HSV	324°, 17%, 90%
XYZ	63.1842, 58.5049, 71.5807
YIQ	204.6960, 16.1360, 15.9440

# Conversions

## Conversions Part 2

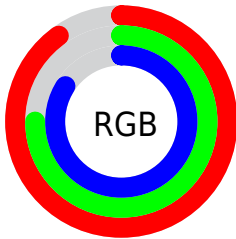
<b>Format</b>	<b>Color</b>
R <sub>Y</sub> B	230, 190, 214
Decimal	15122134
CIE Lab	81.02, 18.19, -6.63
CIE LCh	81, 19.362, 339.975
Yxy	58.5049, 0.3269, 0.3027
Android (android.graphics.Color)	4293312214 (0xFFE6BED6)
YUV	204.6960, 4.5869, 22.1916
Hunter-Lab	76.4885, 13.5970, -1.9438

# Details

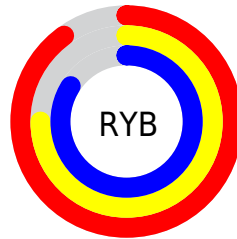
The Hex color **E6BED6** is a light color, and the websafe version is hex **FFCCCC**. A complement of this color would be **BEE6CE**, and the grayscale version is **CDCDCD**.

A 20% lighter version of the original color is **FFF6FF**, and **AE889F** is the 20% darker color. If you saturate the color by 10%, you get **E6A7CD**, and if you desaturate by 10%, it is **E6D5DF**.

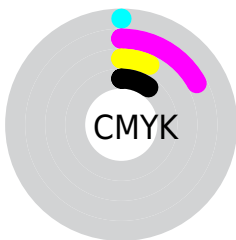
# Distribution



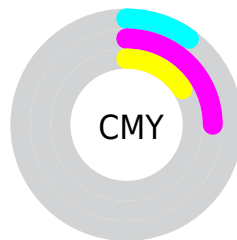
- Red (90%)
- Green (75%)
- Blue (84%)



- Red (90%)
- Yellow (75%)
- Blue (84%)



- Cyan (0%)
- Magenta (17%)
- Yellow (7%)
- Black (10%)



- Cyan (10%)
- Magenta (25%)
- Yellow (16%)

# Brightness & Saturation Gradients

These gradients show how the Hex color E6BED6 changes by changing the brightness by 10 percent. The first figure shows a shift by +10% for each color and the second figure -10%.

Similar to the brightness gradients but the following saturation gradients show a change of the Hex color E6BED6 by changing the saturation by 10% instead.



 E6BED6

 E6BED6

FFFFFF

 CAA3BA

 FFF6FF

 AE889F

 936F85

 79566C

 603F54

 48283D

 311327

 1E0012

 000000

 E6BED6

 E6BED6

 E6A7CD

 E6D5DF

 E690C4

 E6ECE8

 E679BA

 E6FFF2

 E662B1

 E6FFFB

 E64BA8

 E6FFFF

 E6349F

 E61D96

 E6068C

 E6008A

# Harmonies

## Analogous

The Analogous color harmony consists of three colors that are next to each other on the color wheel.



D4C3E5



E6BED6



EFBDC4

# Triad

The Triadic color harmony groups three colors that are evenly spaced from another and form a triangle on the color wheel.



E6BED6



D1CAA6



9AD2E0

# Complementary

The Complementary color scheme is a pair of colors which are on the opposite of each other on the color wheel.



E6BED6



BEE6CE

# Split Complementary

Split-complementary colors differ from the complementary color scheme. The scheme consists of three colors, the original color and two neighbors of the complement color.



9CD4CF



E6BED6



BDCFAD

# Square

The Square scheme is like the rectangle color scheme, but the four colors are evenly spaced on the color wheel.



E6BED6



E3C4A8



A9D3BC



A7CEEB

# Rectangle

The Rectangle color scheme consists of four colors that form a rectangle on the color wheel.



E6BED6



EFBEB8



A9D3BC



99D3DB



# Sweetspot

The Sweet Spot groups the original color and five complimentary colors.



E6BED6



FFF2FA



CEBEE6



80787C



000000



808080



# Same Dimension

The Same Dimension uses a secret algorithm to generate beautiful new colors.



E6BED6



FFC9EA



E6BEC2



73676E



B3006B



33001F



# Inverse Universe

The Inverse Universe completely reimagines the original color for something new.



E6BED6



FFC9EA



BEE6E2



73676E



B3006B

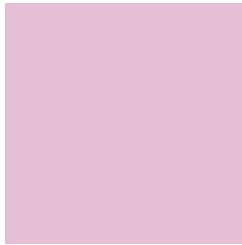


33001F



# Previews

## White Background



This preview shows how the Hex color E6BED6 looks on a white background.

## Color Contrast Check

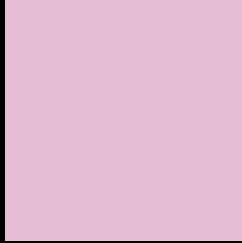
Large Text (above 18pt) WCAG AA × Fail

Any Text WCAG AA × Fail

Large Text (above 18pt) WCAG AAA × Fail

Any Text WCAG AAA × Fail

# Black Background



This preview shows how the Hex color E6BED6 looks on a black background.

## Color Contrast Check

Large Text (above 18pt) WCAG AA ✓ Pass

Any Text WCAG AA ✓ Pass

Large Text (above 18pt) WCAG AAA ✓ Pass

Any Text WCAG AAA ✓ Pass

If you want to check with other color combinations, try the [Color Contrast Checker](#).



## Hex E6BED6 Background



This preview shows how black text looks on a background with the Hex color E6BED6.

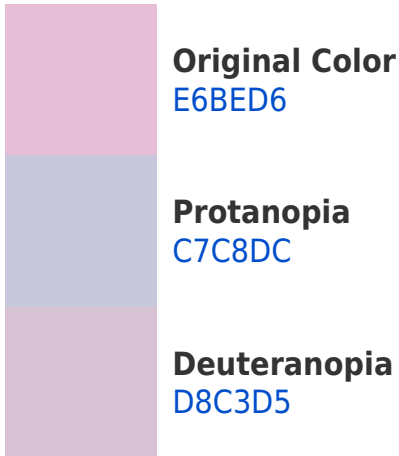


This preview shows how white text looks on a background with the Hex color E6BED6.

# Color Blindness Simulation

Color vision deficiency is a very complex topic, and I could not describe the different causes any better than Wikipedia does, so if you want to learn more, you should check out their [article about color blindness](#).

## Dichromacy



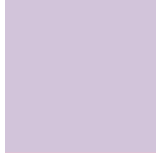


**Tritanopia**  
E5BFCE

# Trichromacy



**Original Color**  
E6BED6



**Protanomaly**  
D2C4DA



**Deuteranomaly**  
DDC1D5

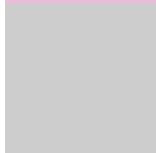


**Tritanomaly**  
E5BFD1

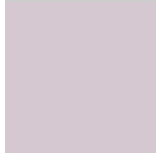
# Monochromacy



**Original Color**  
E6BED6



**Achromatopsia**  
CDCDCD



**Achromatomaly**  
D6C8D0

# CSS Examples

## Text

The CSS property to change the color of the text to Hex E6BED6 is called "color". The color property can be set on classes, ids or directly on the HTML element.

This example shows how text in the color #E6BED6 looks like.

```
.text, #text, p{  
    color:#E6BED6  
}
```

If you want to add a text shadow in that color use the text-shadow property, you can generate a text shadow directly with our [CSS Text Shadow Generator](#).

Here you see how black text with a 4 pixel #E6BED6 colored shadow looks like.

```
.shadow{ text-shadow: 4px 4px 2px #E6BED6
}
```

## Border

The CSS property to change the border of an element to Hex E6BED6 is called "border". The border property can be set on classes, ids or directly on the HTML element.

This example shows the color as border, it can be applied via the CSS property "border" or "border-color".

```
.border, #border, table{ border:4px solid
#E6BED6 }
```

If only the border color should be changed use the property `border-color`.

```
.border{ border-color:#E6BED6 }
```

If you want to add a box shadow in that color use:

Here you see how a box with a 4 pixel #E6BED6 colored shadow looks like.

```
.boxshadow{ -moz-box-shadow:4px 4px 4px  
4px #E6BED6; -webkit-box-shadow:4px 4px  
4px 4px #E6BED6; box-shadow:4px 4px 4px  
4px #E6BED6 }
```

# Background

The CSS property to change the background color of an element to Hex E6BED6 is called "background". The background property can be set on classes, ids or directly on the HTML element.

```
.background, #background, body{  
background:#E6BED6 }
```

If only the background color should be changed can be used:

```
.background{ background-color:#E6BED6 }
```

This example shows the color as background, it is applied via the CSS property "background".

To optimize and compress your CSS code, you can use our [online CSS compressor and optimizer](#) based on csstidy. If you want to create a linear or radial gradient as background or border, check our [CSS Gradient Generator](#).



Hey! You found this booklet interesting? Support Converting Colors with the new Membership Option!

The pro membership hides all ads, plus gives you double the colors in the color bucket, and more awesome pro features!

**[Learn more, Memberships starting at \\$2.50/m!](#)**

**Follow me  
on Twitter!**

@ConvertingColor