

Converting Colors

Hex(E6BF99)

Have a look what the booklet for
Hex(E6BF99) contains.

| | |
|------------------------------------------------|----|
| Hex(E6BF99) | 3 |
| <i>Conversions</i> | 4 |
| <i>Details</i> | 6 |
| <i>Harmonies</i> | 11 |
| <i>Previews</i> | 23 |
| <i>Color Blindness Simulation</i> | 26 |
| <i>CSS Examples</i> | 29 |

Color

Hex(E6BF99)

Conversions

Conversions Part 1

| Format | Color |
|---------------|----------------------------|
| Hex | E6BF99 |
| RGB | 230, 191, 153 |
| RGB Percent | 90%, 75%, 60% |
| CMY | 0.0980, 0.2510, 0.4000 |
| CMYK | 0.00, 0.17, 0.33, 0.10 |
| HSL | 30°, 61%, 75% |
| HSV | 30°, 33%, 90% |
| XYZ | 57.0137, 56.3845, 38.0153 |
| YIQ | 198.3290, 35.4420, -3.5500 |

Conversions

Conversions Part 2

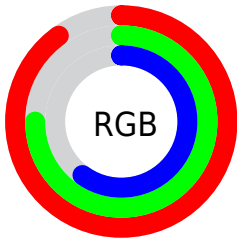
| Format | Color |
|-------------------------------------|--------------------------------|
| R _Y B | 230, 228, 153 |
| Decimal | 15122329 |
| CIE Lab | 79.83, 8.61, 24.40 |
| CIE LCh | 80, 25.873, 70.560 |
| Yxy | 56.3845, 0.3765, 0.3724 |
| Android (android.graphics.Color) | 4293312409 (0xFFE6BF99) |
| YUV | 198.3290, -22.3472, 27.7755 |
| Hunter-Lab | 75.0896, 4.1238, 22.5462 |

Details

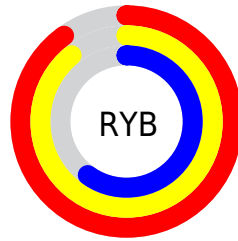
The Hex color **E6BF99** is a light color, and the websafe version is hex **FFCC99**. A complement of this color would be **99C0E6**, and the grayscale version is **C7C7C7**.

A 20% lighter version of the original color is **FFF7D0**, and **AD8A66** is the 20% darker color. If you saturate the color by 10%, you get **E6B382**, and if you desaturate by 10%, it is **E6CBB0**.

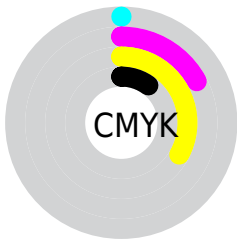
Distribution



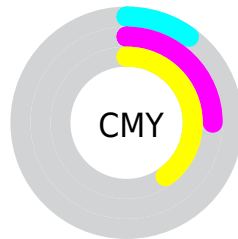
- Red (90%)
- Green (75%)
- Blue (60%)



- Red (90%)
- Yellow (89%)
- Blue (60%)



- Cyan (0%)
- Magenta (17%)
- Yellow (33%)
- Black (10%)



- Cyan (10%)
- Magenta (25%)
- Yellow (40%)

Brightness & Saturation Gradients

These gradients show how the Hex color E6BF99 changes by changing the brightness by 10 percent. The first figure shows a shift by +10% for each color and the second figure -10%.

Similar to the brightness gradients but the following saturation gradients show a change of the Hex color E6BF99 by changing the saturation by 10% instead.

 E6BF99

 E6BF99

FFFFFF

 C9A47F

 FFF7D0

 AD8A66

 FFFFEC

 92704D

 775836

 5D4020

 442A0A

 2C1600

 120000

 000000

 E6BF99

 E6BF99

 E6B382

 E6CBB0

 E6A86B

 E6D6C7

 E69C54

 E6E2DE

 E6903D

 E6EEF5

 E68526

 E6F9FF

 E6790F

 E6FFFF

 E67200

Harmonies

Analogous

The Analogous color harmony consists of three colors that are next to each other on the color wheel.



F4B8A8



E6BF99



CFC796

Triad

The Triadic color harmony groups three colors that are evenly spaced from another and form a triangle on the color wheel.



E6BF99



85D4CE



D5BDEB

Complementary

The Complementary color scheme is a pair of colors which are on the opposite of each other on the color wheel.



E6BF99



99C0E6

Split Complementary

Split-complementary colors differ from the complementary color scheme. The scheme consists of three colors, the original color and two neighbors of the complement color.



B5C5F5



E6BF99



82D2E4

Square

The Square scheme is like the rectangle color scheme, but the four colors are evenly spaced on the color wheel.



E6BF99



99D2B5



95CDF3



ECB6D7

Rectangle

The Rectangle color scheme consists of four colors that form a rectangle on the color wheel.



E6BF99



BDCC9C



95CDF3



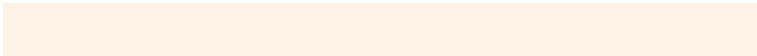
CAC0EF

Sweetspot

The Sweet Spot groups the original color and five complimentary colors.



E6BF99



FFF2E6



E699C1



807870



000000



808080

Same Dimension

The Same Dimension uses a secret algorithm to generate beautiful new colors.



E6BF99



FFCB99



E6E599



736D67



B35800



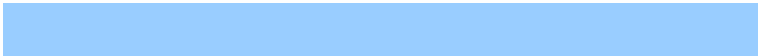
331900

Inverse Universe

The Inverse Universe completely reimagines the original color for something new.



99C0E6



99CDFF



999AE6



676D73



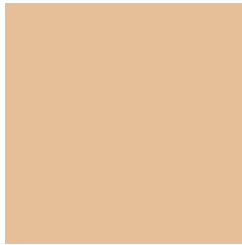
005AB3



001A33

Previews

White Background



This preview shows how the Hex color E6BF99 looks on a white background.

Color Contrast Check

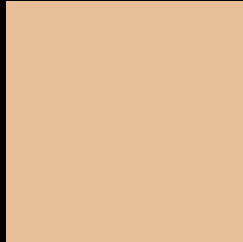
Large Text (above 18pt) WCAG AA × Fail

Any Text WCAG AA × Fail

Large Text (above 18pt) WCAG AAA × Fail

Any Text WCAG AAA × Fail

Black Background



This preview shows how the Hex color E6BF99 looks on a black background.

Color Contrast Check

Large Text (above 18pt) WCAG AA ✓ Pass

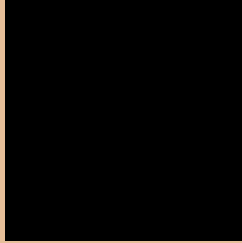
Any Text WCAG AA ✓ Pass

Large Text (above 18pt) WCAG AAA ✓ Pass

Any Text WCAG AAA ✓ Pass

If you want to check with other color combinations, try the [Color Contrast Checker](#).

Hex E6BF99 Background



This preview shows how black text looks on a background with the Hex color E6BF99.



This preview shows how white text looks on a background with the Hex color E6BF99.

Color Blindness Simulation

Color vision deficiency is a very complex topic, and I could not describe the different causes any better than Wikipedia does, so if you want to learn more, you should check out their [article about color blindness](#).

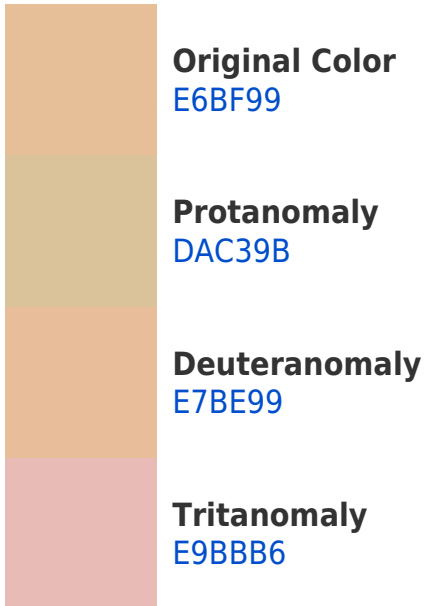
Dichromacy





Tritanopia
EBB9C7

Trichromacy



Monochromacy



CSS Examples

Text

The CSS property to change the color of the text to Hex E6BF99 is called "color". The color property can be set on classes, ids or directly on the HTML element.

This example shows how text in the color #E6BF99 looks like.

```
.text, #text, p{  
    color:#E6BF99  
}
```

If you want to add a text shadow in that color use the text-shadow property, you can generate a text shadow directly with our [CSS Text Shadow Generator](#).

Here you see how black text with a 4 pixel #E6BF99 colored shadow looks like.

```
.shadow{ text-shadow: 4px 4px 2px #E6BF99
}
```

Border

The CSS property to change the border of an element to Hex E6BF99 is called "border". The border property can be set on classes, ids or directly on the HTML element.

This example shows the color as border, it can be applied via the CSS property "border" or "border-color".

```
.border, #border, table{ border:4px solid
#E6BF99 }
```

If only the border color should be changed use the property `border-color`.

```
.border{ border-color:#E6BF99 }
```

If you want to add a box shadow in that color use:

Here you see how a box with a 4 pixel #E6BF99 colored shadow looks like.

```
.boxshadow{ -moz-box-shadow:4px 4px 4px  
4px #E6BF99; -webkit-box-shadow:4px 4px  
4px 4px #E6BF99; box-shadow:4px 4px 4px  
4px #E6BF99 }
```

Background

The CSS property to change the background color of an element to Hex E6BF99 is called "background". The background property can be set on classes, ids or directly on the HTML element.

```
.background, #background, body{  
background:#E6BF99 }
```

If only the background color should be changed can be used:

```
.background{ background-color:#E6BF99 }
```

This example shows the color as background, it is applied via the CSS property "background".

To optimize and compress your CSS code, you can use our [online CSS compressor and optimizer](#) based on csstidy. If you want to create a linear or radial gradient as background or border, check our [CSS Gradient Generator](#).

Hey! You found this booklet interesting? Support Converting Colors with the new Membership Option!

The pro membership hides all ads, plus gives you double the colors in the color bucket, and more awesome pro features!

[Learn more, Memberships starting at \\$2.50/m!](#)

**Follow me
on Twitter!**

@ConvertingColor