

# Converting Colors

Hex(E6C0BF)

Have a look what the booklet for  
Hex(E6C0BF) contains.

<b>Hex(E6C0BF)</b> .....	3
<i><b>Conversions</b></i> .....	4
<i><b>Details</b></i> .....	6
<i><b>Harmonies</b></i> .....	11
<i><b>Previews</b></i> .....	23
<i><b>Color Blindness Simulation</b></i> .....	26
<i><b>CSS Examples</b></i> .....	29

# **Color**

**Hex(E6C0BF)**

# Conversions

## Conversions Part 1

Format	Color
Hex	E6C0BF
RGB	230, 192, 191
RGB Percent	90%, 75%, 75%
CMY	0.0980, 0.2471, 0.2510
CMYK	0.00, 0.17, 0.17, 0.10
HSL	2°, 44%, 83%
HSV	2°, 17%, 90%
XYZ	60.8867, 58.2839, 57.3310
YIQ	203.2480, 22.9690, 7.7450

# Conversions

## Conversions Part 2

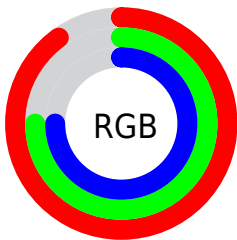
Format	Color
<b>R<sub>YB</sub></b>	230, 192, 191
Decimal	15122623
CIE <sub>Lab</sub>	80.90, 13.36, 5.56
CIE <sub>LCh</sub>	81, 14.475, 22.598
Yxy	58.2839, 0.3450, 0.3302
Android (android.graphics.Color)	4293312703 (0xFFE6C0BF)
YUV	203.2480, -6.0383, 23.4615
Hunter-Lab	76.3439, 8.7578, 8.9164

# Details

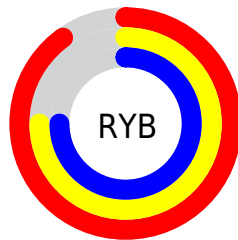
The Hex color **E6C0BF** is a light color, and the websafe version is hex **FFCCCC**. A complement of this color would be **BFE5E6**, and the grayscale version is **CBCBCB**.

A 20% lighter version of the original color is **FFF8F7**, and **AE8A8A** is the 20% darker color. If you saturate the color by 10%, you get **E6AAA8**, and if you desaturate by 10%, it is **E6D6D6**.

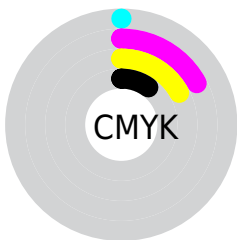
# Distribution



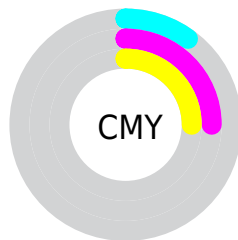
- Red (90%)
- Green (75%)
- Blue (75%)



- Red (90%)
- Yellow (75%)
- Blue (75%)



- Cyan (0%)
- Magenta (17%)
- Yellow (17%)
- Black (10%)



- Cyan (10%)
- Magenta (25%)
- Yellow (25%)

# Brightness & Saturation Gradients

These gradients show how the Hex color E6C0BF changes by changing the brightness by 10 percent. The first figure shows a shift by +10% for each color and the second figure -10%.

Similar to the brightness gradients but the following saturation gradients show a change of the Hex color E6C0BF by changing the saturation by 10% instead.



 E6C0BF

FFFFFF

 FFF8F7

 E6C0BF

 CAA5A4

 AE8A8A

 937170

 795858

 604141

 472B2B

 301616

 1D0000

 000000

 E6C0BF

 E6C0BF

 E6AAA8

 E6D6D6

 E69391

 E6EDED

 E67D7A

 E6FFFF

 E66663

 E6504C

 E63A35

 E6231E

 E60D07

 E60600

# Harmonies

## Analogous

The Analogous color harmony consists of three colors that are next to each other on the color wheel.



E2C0CD



E6C0BF



E2C3B4

# Triad

The Triadic color harmony groups three colors that are evenly spaced from another and form a triangle on the color wheel.



E6C0BF



B9CFB8



B6CBE3

# Complementary

The Complementary color scheme is a pair of colors which are on the opposite of each other on the color wheel.



E6C0BF



BFE5E6

# Split Complementary

Split-complementary colors differ from the complementary color scheme. The scheme consists of three colors, the original color and two neighbors of the complement color.



AACFDE



E6C0BF



ACD1C5

# Square

The Square scheme is like the rectangle color scheme, but the four colors are evenly spaced on the color wheel.



E6C0BF



C9CBB0



A6D1D3



C7C7E2

# Rectangle

The Rectangle color scheme consists of four colors that form a rectangle on the color wheel.



E6C0BF



DBC5AF



A6D1D3



B2CCE2

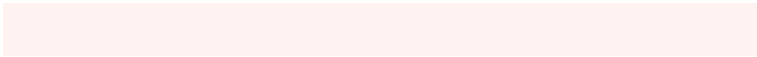


# Sweetspot

The Sweet Spot groups the original color and five complimentary colors.



E6C0BF



FFF3F2



E6BFE5



807878



000000



808080



# Same Dimension

The Same Dimension uses a secret algorithm to generate beautiful new colors.



E6C0BF



FFCDCC



E6D3BF



736867



B30500



330100



# Inverse Universe

The Inverse Universe completely reimagines the original color for something new.



**BFE5E6**



**CCFEFF**



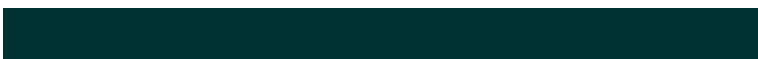
**BFD2E6**



**677273**



**00AEB3**

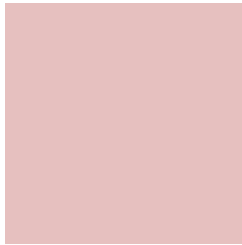


**003233**



# Previews

## White Background



This preview shows how the Hex color E6C0BF looks on a white background.

## Color Contrast Check

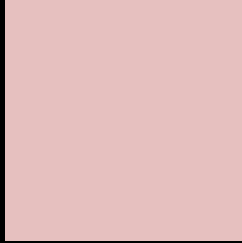
Large Text (above 18pt) WCAG AA × Fail

Any Text WCAG AA × Fail

Large Text (above 18pt) WCAG AAA × Fail

Any Text WCAG AAA × Fail

# Black Background



This preview shows how the Hex color E6C0BF looks on a black background.

## Color Contrast Check

Large Text (above 18pt) WCAG AA ✓ Pass

Any Text WCAG AA ✓ Pass

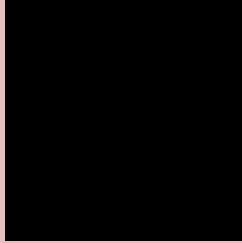
Large Text (above 18pt) WCAG AAA ✓ Pass

Any Text WCAG AAA ✓ Pass

If you want to check with other color combinations, try the [Color Contrast Checker](#).



## Hex E6C0BF Background



This preview shows how black text looks on a background with the Hex color E6C0BF.

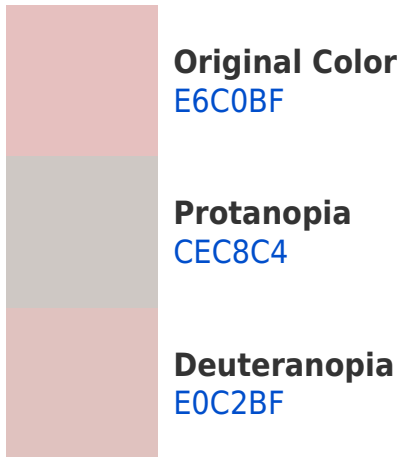


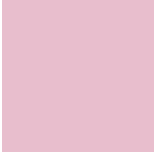
This preview shows how white text looks on a background with the Hex color E6C0BF.

# Color Blindness Simulation

Color vision deficiency is a very complex topic, and I could not describe the different causes any better than Wikipedia does, so if you want to learn more, you should check out their [article about color blindness](#).

## Dichromacy





**Tritanopia**  
E8BECD

# Trichromacy



**Original Color**  
E6C0BF

**Protanomaly**  
D7C5C2

**Deuteranomaly**  
E2C1BF

**Tritanomaly**  
E7BFC8

# Monochromacy



**Original Color**  
E6C0BF

**Achromatopsia**  
CBCBCB

**Achromatomaly**  
D5C7C7

# CSS Examples

## Text

The CSS property to change the color of the text to Hex E6C0BF is called "color". The color property can be set on classes, ids or directly on the HTML element.

This example shows how text in the color #E6C0BF looks like.

```
.text, #text, p{  
    color:#E6C0BF  
}
```

If you want to add a text shadow in that color use the text-shadow property, you can generate a text shadow directly with our [CSS Text Shadow Generator](#).

Here you see how black text with a 4 pixel #E6C0BF colored shadow looks like.

```
.shadow{ text-shadow: 4px 4px 2px #E6C0BF }  
}
```

## Border

The CSS property to change the border of an element to Hex E6C0BF is called "border". The border property can be set on classes, ids or directly on the HTML element.

This example shows the color as border, it can be applied via the CSS property "border" or "border-color".

```
.border, #border, table{ border:4px solid #E6C0BF }  
}
```

If only the border color should be changed use the property `border-color`.

```
.border{ border-color:#E6C0BF }
```

If you want to add a box shadow in that color use:

Here you see how a box with a 4 pixel #E6C0BF colored shadow looks like.

```
.boxshadow{ -moz-box-shadow:4px 4px 4px  
4px #E6C0BF; -webkit-box-shadow:4px 4px  
4px 4px #E6C0BF; box-shadow:4px 4px 4px  
4px #E6C0BF }
```

# Background

The CSS property to change the background color of an element to Hex E6C0BF is called "background". The background property can be set on classes, ids or directly on the HTML element.

```
.background, #background, body{  
background:#E6C0BF }
```

If only the background color should be changed can be used:

```
.background{ background-color:#E6C0BF }
```

This example shows the color as background, it is applied via the CSS property "background".

To optimize and compress your CSS code, you can use our [online CSS compressor and optimizer](#) based on csstidy. If you want to create a linear or radial gradient as background or border, check our [CSS Gradient Generator](#).



Hey! You found this booklet interesting? Support Converting Colors with the new Membership Option!

The pro membership hides all ads, plus gives you double the colors in the color bucket, and more awesome pro features!

**[Learn more, Memberships starting at \\$2.50/m!](#)**

**Follow me  
on Twitter!**

@ConvertingColor