

Converting Colors

Hex(E6C1B8)

Have a look what the booklet for
Hex(E6C1B8) contains.

| | |
|--|----|
| Hex(E6C1B8) | 3 |
| <i>Conversions</i> | 4 |
| <i>Details</i> | 6 |
| <i>Harmonies</i> | 11 |
| <i>Previews</i> | 23 |
| <i>Color Blindness Simulation</i> | 26 |
| <i>CSS Examples</i> | 29 |

Color

Hex(E6C1B8)

Conversions

Conversions Part 1

| Format | Color |
|-------------|---------------------------|
| Hex | E6C1B8 |
| RGB | 230, 193, 184 |
| RGB Percent | 90%, 76%, 72% |
| CMY | 0.0980, 0.2431, 0.2784 |
| CMYK | 0.00, 0.16, 0.20, 0.10 |
| HSL | 12°, 48%, 81% |
| HSV | 12°, 20%, 90% |
| XYZ | 60.3548, 58.4236, 53.4432 |
| YIQ | 203.0370, 24.9410, 5.0450 |

Conversions

Conversions Part 2

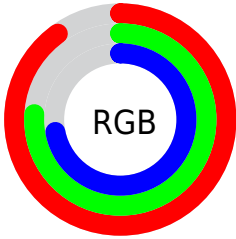
| Format | Color |
|-------------------------------------|-------------------------------|
| R _Y B | 230, 195, 184 |
| Decimal | 15122872 |
| CIE Lab | 80.97, 11.77, 9.43 |
| CIE LCh | 81, 15.084, 38.704 |
| Yxy | 58.4236, 0.3504, 0.3392 |
| Android (android.graphics.Color) | 4293312952 (0xFFE6C1B8) |
| YUV | 203.0370, -9.3852, 23.6466 |
| Hunter-Lab | 76.4353, 7.1852, 12.0494 |

Details

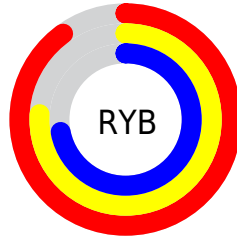
The Hex color **E6C1B8** is a light color, and the websafe version is hex **FFCCCC**. A complement of this color would be **B8DDE6**, and the grayscale version is **CBCBCB**.

A 20% lighter version of the original color is **FFF9F0**, and **AE8B83** is the 20% darker color. If you saturate the color by 10%, you get **E6AFA1**, and if you desaturate by 10%, it is **E6D4CF**.

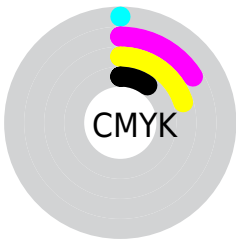
Distribution



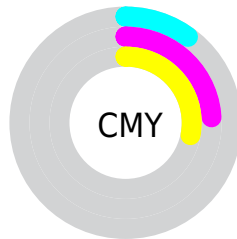
- Red (90%)
- Green (76%)
- Blue (72%)



- Red (90%)
- Yellow (76%)
- Blue (72%)



- Cyan (0%)
- Magenta (16%)
- Yellow (20%)
- Black (10%)



- Cyan (10%)
- Magenta (24%)
- Yellow (28%)

Brightness & Saturation Gradients

These gradients show how the Hex color E6C1B8 changes by changing the brightness by 10 percent. The first figure shows a shift by +10% for each color and the second figure -10%.

Similar to the brightness gradients but the following saturation gradients show a change of the Hex color E6C1B8 by changing the saturation by 10% instead.

 E6C1B8

 E6C1B8

FFFFFF

 CAA69D

 FFF9F0

 AE8B83

 93726A

 795952

 5F423B

 472C25

 301710

 1B0000

 000000

 E6C1B8

 E6C1B8

 E6AFA1

 E6D4CF

 E69C8A

 E6E6E6

 E68A73

 E6F9FD

 E6775C

 E6FFFF

 E66545

 E6522E

 E63F17

 E62D00

Harmonies

Analogous

The Analogous color harmony consists of three colors that are next to each other on the color wheel.



E7BFC5



E6C1B8



DEC5AF

Triad

The Triadic color harmony groups three colors that are evenly spaced from another and form a triangle on the color wheel.



E6C1B8



B1D1BE



BFC9E5

Complementary

The Complementary color scheme is a pair of colors which are on the opposite of each other on the color wheel.



E6C1B8



B8DDE6

Split Complementary

Split-complementary colors differ from the complementary color scheme. The scheme consists of three colors, the original color and two neighbors of the complement color.



AFCDE3



E6C1B8



A7D1CD

Square

The Square scheme is like the rectangle color scheme, but the four colors are evenly spaced on the color wheel.



E6C1B8



C0CEB3



A6D0DA



D1C4DF

Rectangle

The Rectangle color scheme consists of four colors that form a rectangle on the color wheel.



E6C1B8



D5C8AD



A6D0DA



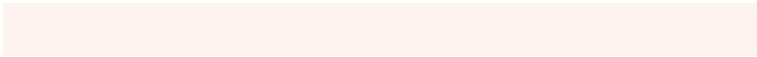
B9CAE5

Sweetspot

The Sweet Spot groups the original color and five complimentary colors.



E6C1B8



FFF3F0



E6B8DE



807877



000000



808080

Same Dimension

The Same Dimension uses a secret algorithm to generate beautiful new colors.



E6C1B8



FFCEC2



E6D7B8



736A67



B32300



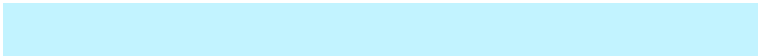
330A00

Inverse Universe

The Inverse Universe completely reimagines the original color for something new.



B8DDE6



C2F3FF



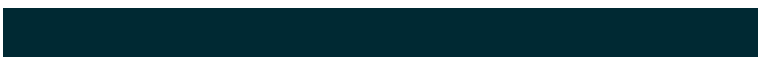
B8C7E6



677173



0090B3



002933

Previews

White Background



This preview shows how the Hex color E6C1B8 looks on a white background.

Color Contrast Check

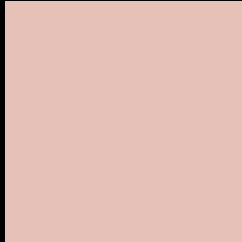
Large Text (above 18pt) WCAG AA × Fail

Any Text WCAG AA × Fail

Large Text (above 18pt) WCAG AAA × Fail

Any Text WCAG AAA × Fail

Black Background



This preview shows how the Hex color E6C1B8 looks on a black background.

Color Contrast Check

Large Text (above 18pt) WCAG AA ✓ Pass

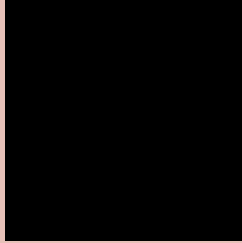
Any Text WCAG AA ✓ Pass

Large Text (above 18pt) WCAG AAA ✓ Pass

Any Text WCAG AAA ✓ Pass

If you want to check with other color combinations, try the [Color Contrast Checker](#).

Hex E6C1B8 Background



This preview shows how black text looks on a background with the Hex color E6C1B8.

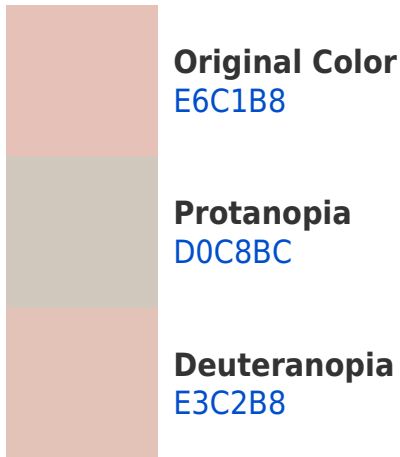


This preview shows how white text looks on a background with the Hex color E6C1B8.

Color Blindness Simulation

Color vision deficiency is a very complex topic, and I could not describe the different causes any better than Wikipedia does, so if you want to learn more, you should check out their [article about color blindness](#).

Dichromacy





Tritanopia
E9BECD

Trichromacy



Original Color
E6C1B8

Protanomaly
D8C5BB

Deuteranomaly
E4C2B8

Tritanomaly
E8BFC5

Monochromacy



Original Color
E6C1B8

Achromatopsia
CBCBCB

Achromatomaly
D5C7C4

CSS Examples

Text

The CSS property to change the color of the text to Hex E6C1B8 is called "color". The color property can be set on classes, ids or directly on the HTML element.

This example shows how text in the color #E6C1B8 looks like.

```
.text, #text, p{  
    color:#E6C1B8  
}
```

If you want to add a text shadow in that color use the text-shadow property, you can generate a text shadow directly with our [CSS Text Shadow Generator](#).

Here you see how black text with a 4 pixel #E6C1B8 colored shadow looks like.

```
.shadow{ text-shadow: 4px 4px 2px #E6C1B8  
}
```

Border

The CSS property to change the border of an element to Hex E6C1B8 is called "border". The border property can be set on classes, ids or directly on the HTML element.

This example shows the color as border, it can be applied via the CSS property "border" or "border-color".

```
.border, #border, table{ border:4px solid  
#E6C1B8 }
```

If only the border color should be changed use the property `border-color`.

```
.border{ border-color:#E6C1B8 }
```

If you want to add a box shadow in that color use:

Here you see how a box with a 4 pixel #E6C1B8 colored shadow looks like.

```
.boxshadow{ -moz-box-shadow:4px 4px 4px  
4px #E6C1B8; -webkit-box-shadow:4px 4px  
4px 4px #E6C1B8; box-shadow:4px 4px 4px  
4px #E6C1B8 }
```

Background

The CSS property to change the background color of an element to Hex E6C1B8 is called "background". The background property can be set on classes, ids or directly on the HTML element.

```
.background, #background, body{  
background:#E6C1B8 }
```

If only the background color should be changed can be used:

```
.background{ background-color:#E6C1B8 }
```

This example shows the color as background, it is applied via the CSS property "background".

To optimize and compress your CSS code, you can use our [online CSS compressor and optimizer](#) based on csstidy. If you want to create a linear or radial gradient as background or border, check our [CSS Gradient Generator](#).

Hey! You found this booklet interesting? Support Converting Colors with the new Membership Option!

The pro membership hides all ads, plus gives you double the colors in the color bucket, and more awesome pro features!

[Learn more, Memberships starting at \\$2.50/m!](#)

**Follow me
on Twitter!**

@ConvertingColor