

Converting Colors

Hex(E6C4B5)

Have a look what the booklet for
Hex(E6C4B5) contains.

Hex(E6C4B5)	3
<i>Conversions</i>	4
<i>Details</i>	6
<i>Harmonies</i>	11
<i>Previews</i>	23
<i>Color Blindness Simulation</i>	26
<i>CSS Examples</i>	29

Color

Hex(E6C4B5)

Conversions

Conversions Part 1

Format	Color
Hex	E6C4B5
RGB	230, 196, 181
RGB Percent	90%, 77%, 71%
CMY	0.0980, 0.2314, 0.2902
CMYK	0.00, 0.15, 0.21, 0.10
HSL	18°, 49%, 81%
HSV	18°, 21%, 90%
XYZ	60.7135, 59.6390, 52.0276
YIQ	204.4560, 25.0790, 2.5430

Conversions

Conversions Part 2

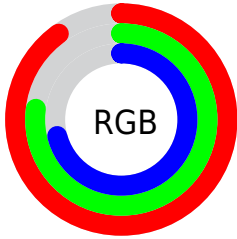
Format	Color
R _Y B	230, 203, 181
Decimal	15123637
CIE Lab	81.64, 9.74, 11.99
CIE LCh	82, 15.449, 50.902
Yxy	59.6390, 0.3522, 0.3460
Android (android.graphics.Color)	4293313717 (0xFFE6C4B5)
YUV	204.4560, -11.5638, 22.4021
Hunter-Lab	77.2263, 5.1865, 14.1146

Details

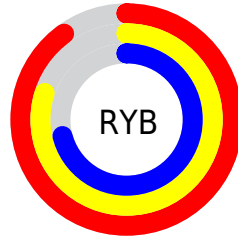
The Hex color **E6C4B5** is a light color, and the websafe version is hex **FFCCCC**. A complement of this color would be **B5D7E6**, and the grayscale version is **CDCDCD**.

A 20% lighter version of the original color is **FFFDED**, and **AE8E80** is the 20% darker color. If you saturate the color by 10%, you get **E6B49E**, and if you desaturate by 10%, it is **E6D4CC**.

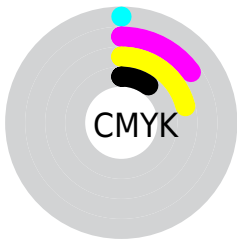
Distribution



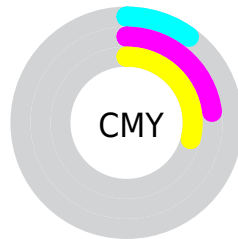
- Red (90%)
- Green (77%)
- Blue (71%)



- Red (90%)
- Yellow (80%)
- Blue (71%)



- Cyan (0%)
- Magenta (15%)
- Yellow (21%)
- Black (10%)



- Cyan (10%)
- Magenta (23%)
- Yellow (29%)

Brightness & Saturation Gradients

These gradients show how the Hex color E6C4B5 changes by changing the brightness by 10 percent. The first figure shows a shift by +10% for each color and the second figure -10%.

Similar to the brightness gradients but the following saturation gradients show a change of the Hex color E6C4B5 by changing the saturation by 10% instead.

 E6C4B5

 E6C4B5

FFFFFF

 CAA99A

 FFFDED

 AE8E80

 937567

 795C4F

 5F4438

 472E23

 30190D

 1A0000

 000000

 E6C4B5

 E6C4B5

 E6B49E

 E6D4CC

 E6A487

 E6E4E3

 E69470

 E6F4FA

 E68459

 E6FFFF

 E67442

 E6642B

 E65414

 E64600

Harmonies

Analogous

The Analogous color harmony consists of three colors that are next to each other on the color wheel.



EAC1C1



E6C4B5



DBC8AF

Triad

The Triadic color harmony groups three colors that are evenly spaced from another and form a triangle on the color wheel.



E6C4B5



ADD3C6



C8C9E6

Complementary

The Complementary color scheme is a pair of colors which are on the opposite of each other on the color wheel.



E6C4B5



B5D7E6

Split Complementary

Split-complementary colors differ from the complementary color scheme. The scheme consists of three colors, the original color and two neighbors of the complement color.



B6CEE7



E6C4B5



A6D3D5

Square

The Square scheme is like the rectangle color scheme, but the four colors are evenly spaced on the color wheel.



E6C4B5



BBD1B8



A9D1E1



DAC4DD

Rectangle

The Rectangle color scheme consists of four colors that form a rectangle on the color wheel.



E6C4B5



D1CCAF



A9D1E1



C2CAE7

Sweetspot

The Sweet Spot groups the original color and five complimentary colors.



E6C4B5



FFF4F0



E6B5D7



807977



000000



808080

Same Dimension

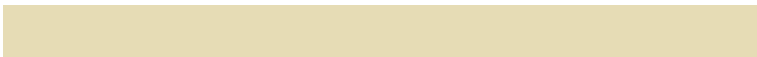
The Same Dimension uses a secret algorithm to generate beautiful new colors.



E6C4B5



FFD1BD



E6DCB5



736B67



B33700



331000

Inverse Universe

The Inverse Universe completely reimagines the original color for something new.



B5D7E6



BDEBFF



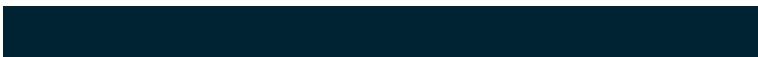
B5BFE6



676F73



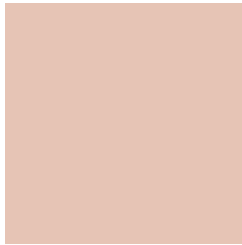
007CB3



002333

Previews

White Background



This preview shows how the Hex color E6C4B5 looks on a white background.

Color Contrast Check

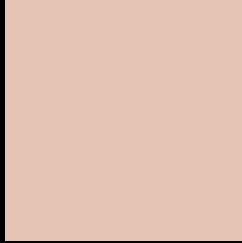
Large Text (above 18pt) WCAG AA × Fail

Any Text WCAG AA × Fail

Large Text (above 18pt) WCAG AAA × Fail

Any Text WCAG AAA × Fail

Black Background



This preview shows how the Hex color E6C4B5 looks on a black background.

Color Contrast Check

Large Text (above 18pt) WCAG AA ✓ Pass

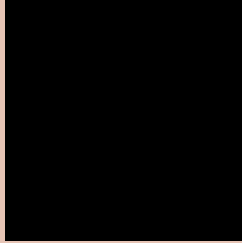
Any Text WCAG AA ✓ Pass

Large Text (above 18pt) WCAG AAA ✓ Pass

Any Text WCAG AAA ✓ Pass

If you want to check with other color combinations, try the [Color Contrast Checker](#).

Hex E6C4B5 Background



This preview shows how black text looks on a background with the Hex color E6C4B5.

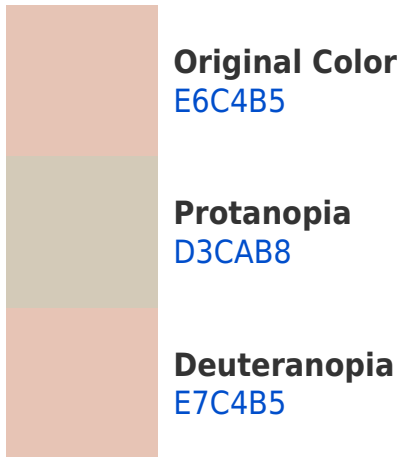


This preview shows how white text looks on a background with the Hex color E6C4B5.

Color Blindness Simulation

Color vision deficiency is a very complex topic, and I could not describe the different causes any better than Wikipedia does, so if you want to learn more, you should check out their [article about color blindness](#).

Dichromacy





Tritanopia
E9C0CF

Trichromacy



Original Color
E6C4B5

Protanomaly
DAC8B7

Deuteranomaly
E7C4B5

Tritanomaly
E8C1C6

Monochromacy



Original Color
E6C4B5

Achromatopsia
CCCCCC

Achromatomaly
D5C9C4

CSS Examples

Text

The CSS property to change the color of the text to Hex E6C4B5 is called "color". The color property can be set on classes, ids or directly on the HTML element.

This example shows how text in the color #E6C4B5 looks like.

```
.text, #text, p{  
    color:#E6C4B5  
}
```

If you want to add a text shadow in that color use the text-shadow property, you can generate a text shadow directly with our [CSS Text Shadow Generator](#).

Here you see how black text with a 4 pixel #E6C4B5 colored shadow looks like.

```
.shadow{ text-shadow: 4px 4px 2px #E6C4B5  
}
```

Border

The CSS property to change the border of an element to Hex E6C4B5 is called "border". The border property can be set on classes, ids or directly on the HTML element.

This example shows the color as border, it can be applied via the CSS property "border" or "border-color".

```
.border, #border, table{ border:4px solid  
#E6C4B5 }
```

If only the border color should be changed use the property `border-color`.

```
.border{ border-color:#E6C4B5 }
```

If you want to add a box shadow in that color use:

Here you see how a box with a 4 pixel #E6C4B5 colored shadow looks like.

```
.boxshadow{ -moz-box-shadow:4px 4px 4px  
4px #E6C4B5; -webkit-box-shadow:4px 4px  
4px 4px #E6C4B5; box-shadow:4px 4px 4px  
4px #E6C4B5 }
```

Background

The CSS property to change the background color of an element to Hex E6C4B5 is called "background". The background property can be set on classes, ids or directly on the HTML element.

```
.background, #background, body{  
background:#E6C4B5 }
```

If only the background color should be changed can be used:

```
.background{ background-color:#E6C4B5 }
```

This example shows the color as background, it is applied via the CSS property "background".

To optimize and compress your CSS code, you can use our [online CSS compressor and optimizer](#) based on csstidy. If you want to create a linear or radial gradient as background or border, check our [CSS Gradient Generator](#).

Hey! You found this booklet interesting? Support Converting Colors with the new Membership Option!

The pro membership hides all ads, plus gives you double the colors in the color bucket, and more awesome pro features!

[Learn more, Memberships starting at \\$2.50/m!](#)

**Follow me
on Twitter!**

@ConvertingColor