

# Converting Colors

Hex(E6C4B6)

Have a look what the booklet for  
Hex(E6C4B6) contains.

<b>Hex(E6C4B6)</b> .....	3
<i><b>Conversions</b></i> .....	4
<i><b>Details</b></i> .....	6
<i><b>Harmonies</b></i> .....	11
<i><b>Previews</b></i> .....	23
<i><b>Color Blindness Simulation</b></i> .....	26
<i><b>CSS Examples</b></i> .....	29

# **Color**

**Hex(E6C4B6)**

# Conversions

## Conversions Part 1

Format	Color
Hex	E6C4B6
RGB	230, 196, 182
RGB Percent	90%, 77%, 71%
CMY	0.0980, 0.2314, 0.2863
CMYK	0.00, 0.15, 0.21, 0.10
HSL	18°, 49%, 81%
HSV	18°, 21%, 90%
XYZ	60.8166, 59.6802, 52.5700
YIQ	204.5700, 24.7580, 2.8540

# Conversions

## Conversions Part 2

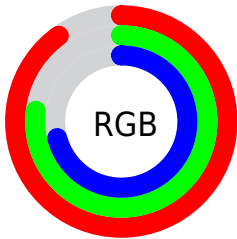
Format	Color
R <sub>Y</sub> B	230, 202, 182
Decimal	15123638
CIE Lab	81.66, 9.89, 11.49
CIE LCh	82, 15.157, 49.274
Yxy	59.6802, 0.3514, 0.3448
Android (android.graphics.Color)	4293313718 (0xFFE6C4B6)
YUV	204.5700, -11.1270, 22.3021
Hunter-Lab	77.2530, 5.3294, 13.7307

# Details

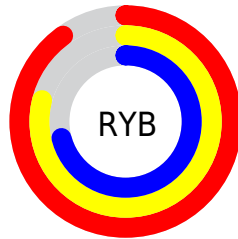
The Hex color **E6C4B6** is a light color, and the websafe version is hex **FFCCCC**. A complement of this color would be **B6D8E6**, and the grayscale version is **CDCDCD**.

A 20% lighter version of the original color is **FFFDEE**, and **AE8E81** is the 20% darker color. If you saturate the color by 10%, you get **E6B49F**, and if you desaturate by 10%, it is **E6D4CD**.

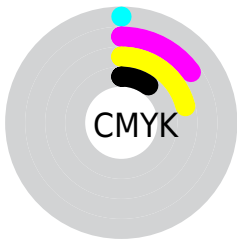
# Distribution



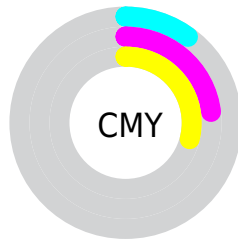
- Red (90%)
- Green (77%)
- Blue (71%)



- Red (90%)
- Yellow (79%)
- Blue (71%)



- Cyan (0%)
- Magenta (15%)
- Yellow (21%)
- Black (10%)



- Cyan (10%)
- Magenta (23%)
- Yellow (29%)

# Brightness & Saturation Gradients

These gradients show how the Hex color E6C4B6 changes by changing the brightness by 10 percent. The first figure shows a shift by +10% for each color and the second figure -10%.

Similar to the brightness gradients but the following saturation gradients show a change of the Hex color E6C4B6 by changing the saturation by 10% instead.



 E6C4B6

 E6C4B6

FFFFFF

 CAA99B

 FFFDEE

 AE8E81

 937568

 795C50

 5F4439

 472E23

 30190E

 1B0000

 000000

 E6C4B6

 E6C4B6

 E6B49F

 E6D4CD

 E6A388

 E6E5E4

 E69371

 E6F5FB

 E6835A

 E6FFFF

 E67343

 E6622C

 E65215

 E64300

# Harmonies

## Analogous

The Analogous color harmony consists of three colors that are next to each other on the color wheel.



E9C2C2



E6C4B6



DCC8AF

# Triad

The Triadic color harmony groups three colors that are evenly spaced from another and form a triangle on the color wheel.



E6C4B6



AED3C5



C7C9E6

# Complementary

The Complementary color scheme is a pair of colors which are on the opposite of each other on the color wheel.



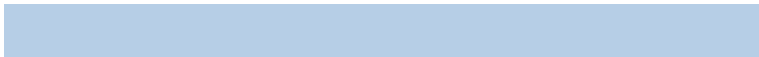
E6C4B6



B6D8E6

# Split Complementary

Split-complementary colors differ from the complementary color scheme. The scheme consists of three colors, the original color and two neighbors of the complement color.



B6CEE6



E6C4B6



A7D3D4

# Square

The Square scheme is like the rectangle color scheme, but the four colors are evenly spaced on the color wheel.



E6C4B6



BCD1B8



A9D1E0



D9C5DE

# Rectangle

The Rectangle color scheme consists of four colors that form a rectangle on the color wheel.



E6C4B6



D2CBAF



A9D1E0



C1CBE7



# Sweetspot

The Sweet Spot groups the original color and five complimentary colors.



E6C4B6



FFF4F0



E6B6D8



807977



000000



808080



# Same Dimension

The Same Dimension uses a secret algorithm to generate beautiful new colors.



E6C4B6



FFD2BF



E6DCB6



736B67



B33400



330F00

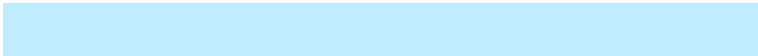


# Inverse Universe

The Inverse Universe completely reimagines the original color for something new.



B6D8E6



BFECFF



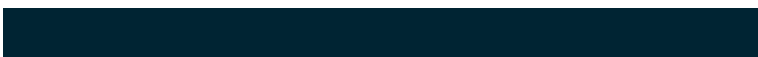
B6C0E6



676F73



007EB3

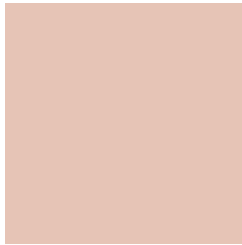


002433



# Previews

## White Background



This preview shows how the Hex color E6C4B6 looks on a white background.

## Color Contrast Check

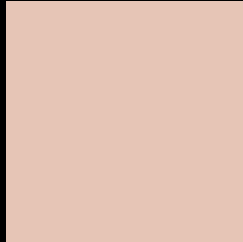
Large Text (above 18pt) WCAG AA × Fail

Any Text WCAG AA × Fail

Large Text (above 18pt) WCAG AAA × Fail

Any Text WCAG AAA × Fail

# Black Background



This preview shows how the Hex color E6C4B6 looks on a black background.

## Color Contrast Check

Large Text (above 18pt) WCAG AA ✓ Pass

Any Text WCAG AA ✓ Pass

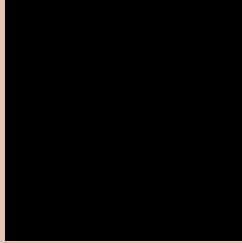
Large Text (above 18pt) WCAG AAA ✓ Pass

Any Text WCAG AAA ✓ Pass

If you want to check with other color combinations, try the [Color Contrast Checker](#).



## Hex E6C4B6 Background



This preview shows how black text looks on a background with the Hex color E6C4B6.

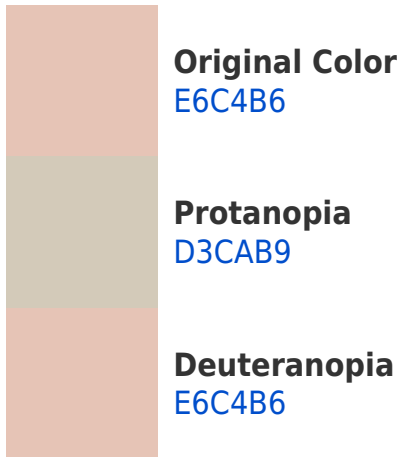


This preview shows how white text looks on a background with the Hex color E6C4B6.

# Color Blindness Simulation

Color vision deficiency is a very complex topic, and I could not describe the different causes any better than Wikipedia does, so if you want to learn more, you should check out their [article about color blindness](#).

## Dichromacy





**Tritanopia**  
E9C0CF

# Trichromacy



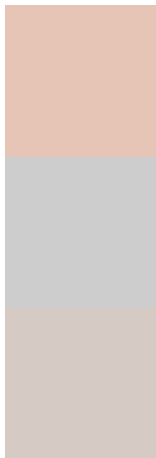
**Original Color**  
E6C4B6

**Protanomaly**  
DAC8B8

**Deuteranomaly**  
E6C4B6

**Tritanomaly**  
E8C1C6

# Monochromacy



**Original Color**  
E6C4B6

**Achromatopsia**  
CDCDCD

**Achromatomaly**  
D6CAC5

# CSS Examples

## Text

The CSS property to change the color of the text to Hex E6C4B6 is called "color". The color property can be set on classes, ids or directly on the HTML element.

This example shows how text in the color #E6C4B6 looks like.

```
.text, #text, p{  
    color:#E6C4B6  
}
```

If you want to add a text shadow in that color use the text-shadow property, you can generate a text shadow directly with our [CSS Text Shadow Generator](#).

Here you see how black text with a 4 pixel #E6C4B6 colored shadow looks like.

```
.shadow{ text-shadow: 4px 4px 2px #E6C4B6 }  
}
```

## Border

The CSS property to change the border of an element to Hex E6C4B6 is called "border". The border property can be set on classes, ids or directly on the HTML element.

This example shows the color as border, it can be applied via the CSS property "border" or "border-color".

```
.border, #border, table{ border:4px solid #E6C4B6 }  
}
```

If only the border color should be changed use the property border-color.

```
.border{ border-color:#E6C4B6 }
```

If you want to add a box shadow in that color use:

Here you see how a box with a 4 pixel #E6C4B6 colored shadow looks like.

```
.boxshadow{ -moz-box-shadow:4px 4px 4px  
4px #E6C4B6; -webkit-box-shadow:4px 4px  
4px 4px #E6C4B6; box-shadow:4px 4px 4px  
4px #E6C4B6 }
```

# Background

The CSS property to change the background color of an element to Hex E6C4B6 is called "background". The background property can be set on classes, ids or directly on the HTML element.

```
.background, #background, body{  
background:#E6C4B6 }
```

If only the background color should be changed can be used:

```
.background{ background-color:#E6C4B6 }
```

This example shows the color as background, it is applied via the CSS property "background".

To optimize and compress your CSS code, you can use our [online CSS compressor and optimizer](#) based on csstidy. If you want to create a linear or radial gradient as background or border, check our [CSS Gradient Generator](#).



Hey! You found this booklet interesting? Support Converting Colors with the new Membership Option!

The pro membership hides all ads, plus gives you double the colors in the color bucket, and more awesome pro features!

**[Learn more, Memberships starting at \\$2.50/m!](#)**

**Follow me  
on Twitter!**

@ConvertingColor