

Converting Colors

Hex(E6C5B6)

Have a look what the booklet for
Hex(E6C5B6) contains.

Hex(E6C5B6)	3
<i>Conversions</i>	4
<i>Details</i>	6
<i>Harmonies</i>	11
<i>Previews</i>	23
<i>Color Blindness Simulation</i>	26
<i>CSS Examples</i>	29

Color

Hex(E6C5B6)

Conversions

Conversions Part 1

Format	Color
Hex	E6C5B6
RGB	230, 197, 182
RGB Percent	90%, 77%, 71%
CMY	0.0980, 0.2275, 0.2863
CMYK	0.00, 0.14, 0.21, 0.10
HSL	19°, 49%, 81%
HSV	19°, 21%, 90%
XYZ	61.0429, 60.1329, 52.6455
YIQ	205.1570, 24.4830, 2.3310

Conversions

Conversions Part 2

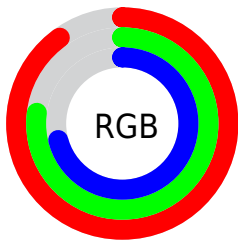
Format	Color
R _Y B	230, 204, 182
Decimal	15123894
CIE Lab	81.91, 9.36, 11.84
CIE LCh	82, 15.091, 51.659
Yxy	60.1329, 0.3512, 0.3459
Android (android.graphics.Color)	4293313974 (0xFFE6C5B6)
YUV	205.1570, -11.4164, 21.7873
Hunter-Lab	77.5454, 4.8087, 14.0299

Details

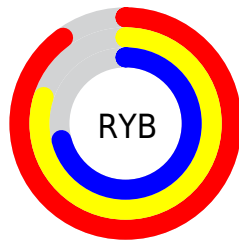
The Hex color **E6C5B6** is a light color, and the websafe version is hex **FFCCCC**. A complement of this color would be **B6D7E6**, and the grayscale version is **CDCDCD**.

A 20% lighter version of the original color is **FFFEEE**, and **AE8F81** is the 20% darker color. If you saturate the color by 10%, you get **E6B59F**, and if you desaturate by 10%, it is **E6D5CD**.

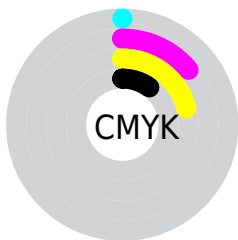
Distribution



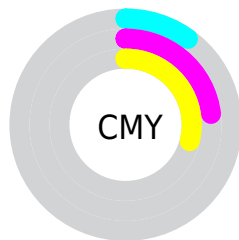
- Red (90%)
- Green (77%)
- Blue (71%)



- Red (90%)
- Yellow (80%)
- Blue (71%)



- Cyan (0%)
- Magenta (14%)
- Yellow (21%)
- Black (10%)



- Cyan (10%)
- Magenta (23%)
- Yellow (29%)

Brightness & Saturation Gradients

These gradients show how the Hex color E6C5B6 changes by changing the brightness by 10 percent. The first figure shows a shift by +10% for each color and the second figure -10%.

Similar to the brightness gradients but the following saturation gradients show a change of the Hex color E6C5B6 by changing the saturation by 10% instead.

 E6C5B6

 E6C5B6

FFFFFF

 CAAA9B

 FFFEEE

 AE8F81

 937668

 795D50

 5F4539

 472F23

 301A0E

 1B0000

 000000

 E6C5B6

 E6C5B6

 E6B59F

 E6D5CD

 E6A588

 E6E5E4

 E69671

 E6F4FB

 E6865A

 E6FFFF

 E67643

 E6662C

 E65615

 E64800

Harmonies

Analogous

The Analogous color harmony consists of three colors that are next to each other on the color wheel.



EAC2C2



E6C5B6



DBC9B0

Triad

The Triadic color harmony groups three colors that are evenly spaced from another and form a triangle on the color wheel.



E6C5B6



AED4C7



C9C9E6

Complementary

The Complementary color scheme is a pair of colors which are on the opposite of each other on the color wheel.



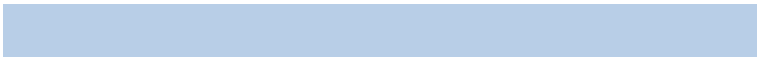
E6C5B6



B6D7E6

Split Complementary

Split-complementary colors differ from the complementary color scheme. The scheme consists of three colors, the original color and two neighbors of the complement color.



B8CEE7



E6C5B6



A8D4D6

Square

The Square scheme is like the rectangle color scheme, but the four colors are evenly spaced on the color wheel.



E6C5B6



BCD2BA



ABD2E1



DAC5DD

Rectangle

The Rectangle color scheme consists of four colors that form a rectangle on the color wheel.



E6C5B6



D1CCB0



ABD2E1



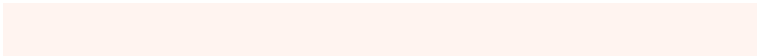
C3CBE7

Sweetspot

The Sweet Spot groups the original color and five complimentary colors.



E6C5B6



FFF4F0



E6B6D8



807977



000000



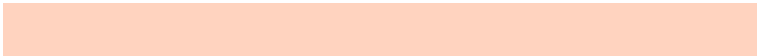
808080

Same Dimension

The Same Dimension uses a secret algorithm to generate beautiful new colors.



E6C5B6



FFD3BF



E6DCB6



736B67



B33800



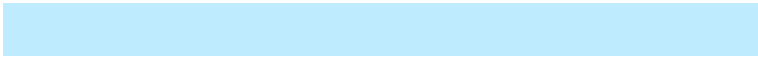
331000

Inverse Universe

The Inverse Universe completely reimagines the original color for something new.



B6D7E6



BFEBFF



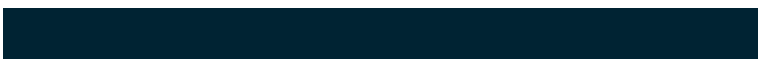
B6C0E6



676F73



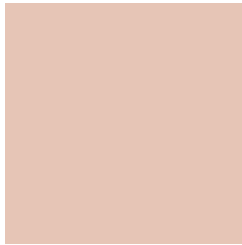
007BB3



002333

Previews

White Background



This preview shows how the Hex color E6C5B6 looks on a white background.

Color Contrast Check

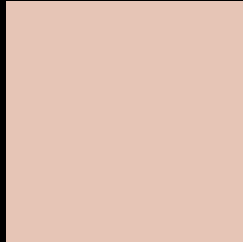
Large Text (above 18pt) WCAG AA × Fail

Any Text WCAG AA × Fail

Large Text (above 18pt) WCAG AAA × Fail

Any Text WCAG AAA × Fail

Black Background



This preview shows how the Hex color E6C5B6 looks on a black background.

Color Contrast Check

Large Text (above 18pt) WCAG AA ✓ Pass

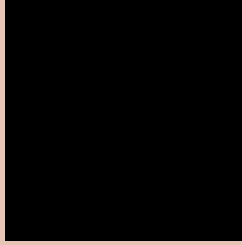
Any Text WCAG AA ✓ Pass

Large Text (above 18pt) WCAG AAA ✓ Pass

Any Text WCAG AAA ✓ Pass

If you want to check with other color combinations, try the [Color Contrast Checker](#).

Hex E6C5B6 Background



This preview shows how black text looks on a background with the Hex color E6C5B6.

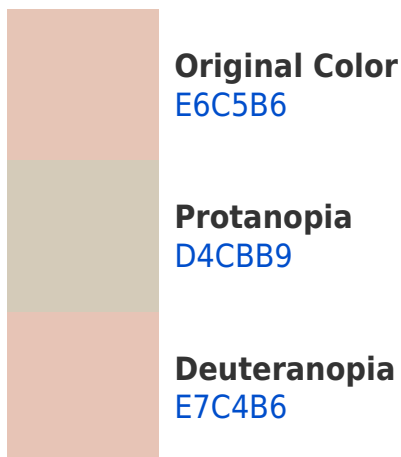


This preview shows how white text looks on a background with the Hex color E6C5B6.

Color Blindness Simulation

Color vision deficiency is a very complex topic, and I could not describe the different causes any better than Wikipedia does, so if you want to learn more, you should check out their [article about color blindness](#).

Dichromacy





Tritanopia
E9C1D0

Trichromacy



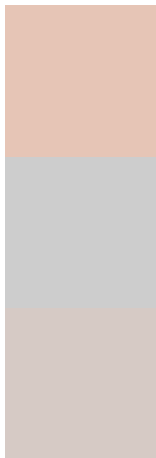
Original Color
E6C5B6

Protanomaly
DBC9B8

Deuteranomaly
E7C4B6

Tritanomaly
E8C2C7

Monochromacy



Original Color
E6C5B6

Achromatopsia
CDCDCD

Achromatomaly
D6CAC5

CSS Examples

Text

The CSS property to change the color of the text to Hex E6C5B6 is called "color". The color property can be set on classes, ids or directly on the HTML element.

This example shows how text in the color #E6C5B6 looks like.

```
.text, #text, p{  
    color:#E6C5B6  
}
```

If you want to add a text shadow in that color use the text-shadow property, you can generate a text shadow directly with our [CSS Text Shadow Generator](#).

Here you see how black text with a 4 pixel #E6C5B6 colored shadow looks like.

```
.shadow{ text-shadow: 4px 4px 2px #E6C5B6  
}
```

Border

The CSS property to change the border of an element to Hex E6C5B6 is called "border". The border property can be set on classes, ids or directly on the HTML element.

This example shows the color as border, it can be applied via the CSS property "border" or "border-color".

```
.border, #border, table{ border:4px solid  
#E6C5B6 }
```

If only the border color should be changed use the property `border-color`.

```
.border{ border-color:#E6C5B6 }
```

If you want to add a box shadow in that color use:

Here you see how a box with a 4 pixel #E6C5B6 colored shadow looks like.

```
.boxshadow{ -moz-box-shadow:4px 4px 4px  
4px #E6C5B6; -webkit-box-shadow:4px 4px  
4px 4px #E6C5B6; box-shadow:4px 4px 4px  
4px #E6C5B6 }
```

Background

The CSS property to change the background color of an element to Hex E6C5B6 is called "background". The background property can be set on classes, ids or directly on the HTML element.

```
.background, #background, body{  
background:#E6C5B6 }
```

If only the background color should be changed can be used:

```
.background{ background-color:#E6C5B6 }
```

This example shows the color as background, it is applied via the CSS property "background".

To optimize and compress your CSS code, you can use our [online CSS compressor and optimizer](#) based on csstidy. If you want to create a linear or radial gradient as background or border, check our [CSS Gradient Generator](#).

Hey! You found this booklet interesting? Support Converting Colors with the new Membership Option!

The pro membership hides all ads, plus gives you double the colors in the color bucket, and more awesome pro features!

[Learn more, Memberships starting at \\$2.50/m!](#)

**Follow me
on Twitter!**

@ConvertingColor