

Converting Colors

Hex(E6C7C3)

Have a look what the booklet for
Hex(E6C7C3) contains.

Hex(E6C7C3)	3
<i>Conversions</i>	4
<i>Details</i>	6
<i>Harmonies</i>	11
<i>Previews</i>	23
<i>Color Blindness Simulation</i>	26
<i>CSS Examples</i>	29

Color

Hex(E6C7C3)

Conversions

Conversions Part 1

Format	Color
Hex	E6C7C3
RGB	230, 199, 195
RGB Percent	90%, 78%, 76%
CMY	0.0980, 0.2196, 0.2353
CMYK	0.00, 0.13, 0.15, 0.10
HSL	7°, 41%, 83%
HSV	7°, 15%, 90%
XYZ	62.9069, 61.6100, 60.2061
YIQ	207.8130, 19.7600, 5.3280

Conversions

Conversions Part 2

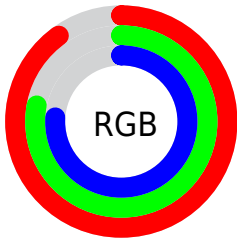
Format	Color
R _Y B	230, 200, 195
Decimal	15124419
CIE Lab	82.71, 10.28, 6.03
CIE LCh	83, 11.917, 30.376
Yxy	61.6100, 0.3405, 0.3335
Android (android.graphics.Color)	4293314499 (0xFFE6C7C3)
YUV	207.8130, -6.3168, 19.4580
Hunter-Lab	78.4920, 5.6965, 9.4669

Details

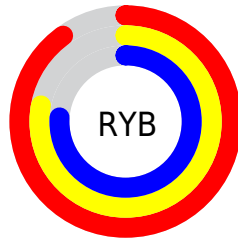
The Hex color **E6C7C3** is a light color, and the websafe version is hex **FFCCCC**. A complement of this color would be **C3E2E6**, and the grayscale version is **D0D0D0**.

A 20% lighter version of the original color is **FFFFFFC**, and **AE918D** is the 20% darker color. If you saturate the color by 10%, you get **E6B3AC**, and if you desaturate by 10%, it is **E6DBDA**.

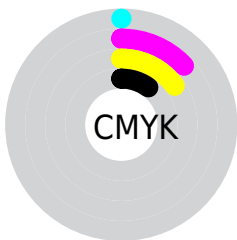
Distribution



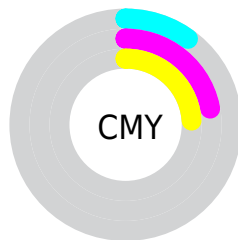
- Red (90%)
- Green (78%)
- Blue (76%)



- Red (90%)
- Yellow (78%)
- Blue (76%)



- Cyan (0%)
- Magenta (13%)
- Yellow (15%)
- Black (10%)



- Cyan (10%)
- Magenta (22%)
- Yellow (24%)

Brightness & Saturation Gradients

These gradients show how the Hex color E6C7C3 changes by changing the brightness by 10 percent. The first figure shows a shift by +10% for each color and the second figure -10%.

Similar to the brightness gradients but the following saturation gradients show a change of the Hex color E6C7C3 by changing the saturation by 10% instead.

 E6C7C3

 E6C7C3

FFFFFFF

 CAACA8

FFFFFFC

 AE918D

 937774

 795F5B

 604744

 48302E

 311B19

 1E0100

 000000

 E6C7C3

 E6C7C3

 E6B3AC

 E6DBDA

 E69E95

 E6F0F1

 E68A7E

 E6FFFF

 E67667

 E66150

 E64D39

 E63822

 E6240B

 E61A00

Harmonies

Analogous

The Analogous color harmony consists of three colors that are next to each other on the color wheel.



E5C6CE



E6C7C3



E1CABB

Triad

The Triadic color harmony groups three colors that are evenly spaced from another and form a triangle on the color wheel.



E6C7C3



BED3C2



C2CFE4

Complementary

The Complementary color scheme is a pair of colors which are on the opposite of each other on the color wheel.



E6C7C3



C3E2E6

Split Complementary

Split-complementary colors differ from the complementary color scheme. The scheme consists of three colors, the original color and two neighbors of the complement color.



B7D2E1



E6C7C3



B5D5CE

Square

The Square scheme is like the rectangle color scheme, but the four colors are evenly spaced on the color wheel.



E6C7C3



CAD1BA



B2D4D9



D0CBE1

Rectangle

The Rectangle color scheme consists of four colors that form a rectangle on the color wheel.



E6C7C3



DBCCB8



B2D4D9



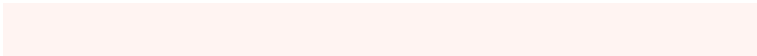
BED0E4

Sweetspot

The Sweet Spot groups the original color and five complimentary colors.



E6C7C3



FFF4F2



E6C3E3



807978



000000



808080

Same Dimension

The Same Dimension uses a secret algorithm to generate beautiful new colors.



E6C7C3



FFD6D1



E6D8C3



736967



B31400



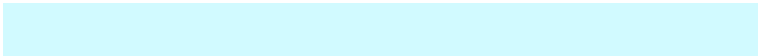
330600

Inverse Universe

The Inverse Universe completely reimagines the original color for something new.



C3E2E6



D1FAFF



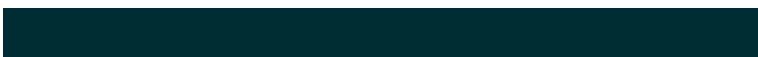
C3D1E6



677173



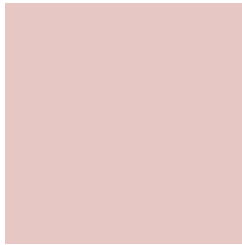
009EB3



002D33

Previews

White Background



This preview shows how the Hex color E6C7C3 looks on a white background.

Color Contrast Check

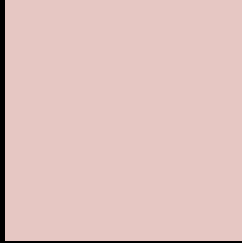
Large Text (above 18pt) WCAG AA × Fail

Any Text WCAG AA × Fail

Large Text (above 18pt) WCAG AAA × Fail

Any Text WCAG AAA × Fail

Black Background



This preview shows how the Hex color E6C7C3 looks on a black background.

Color Contrast Check

Large Text (above 18pt) WCAG AA ✓ Pass

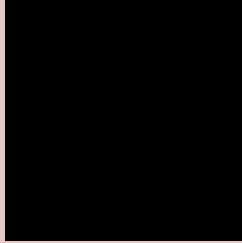
Any Text WCAG AA ✓ Pass

Large Text (above 18pt) WCAG AAA ✓ Pass

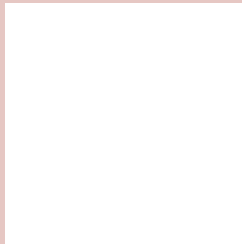
Any Text WCAG AAA ✓ Pass

If you want to check with other color combinations, try the [Color Contrast Checker](#).

Hex E6C7C3 Background



This preview shows how black text looks on a background with the Hex color E6C7C3.

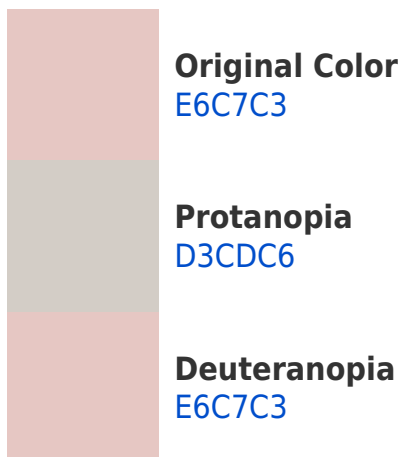


This preview shows how white text looks on a background with the Hex color E6C7C3.

Color Blindness Simulation

Color vision deficiency is a very complex topic, and I could not describe the different causes any better than Wikipedia does, so if you want to learn more, you should check out their [article about color blindness](#).

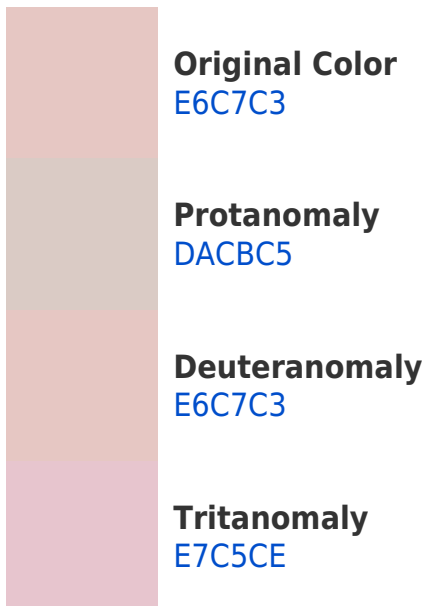
Dichromacy



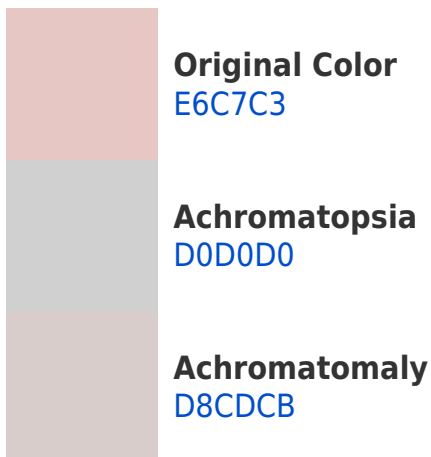


Tritanopia
E8C4D4

Trichromacy



Monochromacy



CSS Examples

Text

The CSS property to change the color of the text to Hex E6C7C3 is called "color". The color property can be set on classes, ids or directly on the HTML element.

This example shows how text in the color #E6C7C3 looks like.

```
.text, #text, p{  
    color:#E6C7C3  
}
```

If you want to add a text shadow in that color use the text-shadow property, you can generate a text shadow directly with our [CSS Text Shadow Generator](#).

Here you see how black text with a 4 pixel #E6C7C3 colored shadow looks like.

```
.shadow{ text-shadow: 4px 4px 2px #E6C7C3
}
```

Border

The CSS property to change the border of an element to Hex E6C7C3 is called "border". The border property can be set on classes, ids or directly on the HTML element.

This example shows the color as border, it can be applied via the CSS property "border" or "border-color".

```
.border, #border, table{ border:4px solid
#E6C7C3 }
```

If only the border color should be changed use the property `border-color`.

```
.border{ border-color:#E6C7C3 }
```

If you want to add a box shadow in that color use:

Here you see how a box with a 4 pixel #E6C7C3 colored shadow looks like.

```
.boxshadow{ -moz-box-shadow:4px 4px 4px  
4px #E6C7C3; -webkit-box-shadow:4px 4px  
4px 4px #E6C7C3; box-shadow:4px 4px 4px  
4px #E6C7C3 }
```

Background

The CSS property to change the background color of an element to Hex E6C7C3 is called "background". The background property can be set on classes, ids or directly on the HTML element.

```
.background, #background, body{  
background:#E6C7C3 }
```

If only the background color should be changed can be used:

```
.background{ background-color:#E6C7C3 }
```

This example shows the color as background, it is applied via the CSS property "background".

To optimize and compress your CSS code, you can use our [online CSS compressor and optimizer](#) based on csstidy. If you want to create a linear or radial gradient as background or border, check our [CSS Gradient Generator](#).

Hey! You found this booklet interesting? Support Converting Colors with the new Membership Option!

The pro membership hides all ads, plus gives you double the colors in the color bucket, and more awesome pro features!

[Learn more, Memberships starting at \\$2.50/m!](#)

**Follow me
on Twitter!**

@ConvertingColor