

Converting Colors

Hex(E6CACF)

Have a look what the booklet for
Hex(E6CACF) contains.

| | |
|--|----|
| Hex(E6CACF) | 3 |
| <i>Conversions</i> | 4 |
| <i>Details</i> | 6 |
| <i>Harmonies</i> | 11 |
| <i>Previews</i> | 23 |
| <i>Color Blindness Simulation</i> | 26 |
| <i>CSS Examples</i> | 29 |

Color

Hex(E6CACF)

Conversions

Conversions Part 1

| Format | Color |
|-------------|---------------------------|
| Hex | E6CACF |
| RGB | 230, 202, 207 |
| RGB Percent | 90%, 79%, 81% |
| CMY | 0.0980, 0.2078, 0.1882 |
| CMYK | 0.00, 0.12, 0.10, 0.10 |
| HSL | 349°, 36%, 85% |
| HSV | 349°, 12%, 90% |
| XYZ | 65.0161, 63.5690, 67.8748 |
| YIQ | 210.9420, 15.0830, 7.4910 |

Conversions

Conversions Part 2

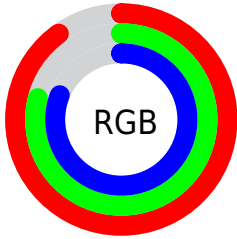
| Format | Color |
|-------------------------------------|-------------------------------|
| R _Y B | 230, 202, 207 |
| Decimal | 15125199 |
| CIE Lab | 83.74, 10.63, 1.12 |
| CIE LCh | 84, 10.693, 6.001 |
| Yxy | 63.5690, 0.3309, 0.3236 |
| Android (android.graphics.Color) | 4293315279 (0xFFE6CACF) |
| YUV | 210.9420, -1.9434, 16.7139 |
| Hunter-Lab | 79.7302, 6.0303, 5.3372 |

Details

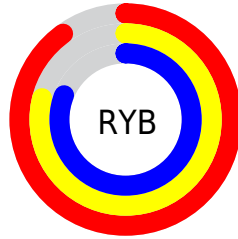
The Hex color **E6CACF** is a light color, and the websafe version is hex **FFCCCC**. A complement of this color would be **CAE6E1**, and the grayscale version is **D3D3D3**.

A 20% lighter version of the original color is **FFFFFF**, and **AE9499** is the 20% darker color. If you saturate the color by 10%, you get **E6B3BC**, and if you desaturate by 10%, it is **E6E1E2**.

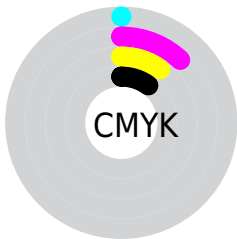
Distribution



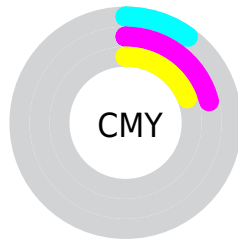
- Red (90%)
- Green (79%)
- Blue (81%)



- Red (90%)
- Yellow (79%)
- Blue (81%)



- Cyan (0%)
- Magenta (12%)
- Yellow (10%)
- Black (10%)



- Cyan (10%)
- Magenta (21%)
- Yellow (19%)

Brightness & Saturation Gradients

These gradients show how the Hex color E6CACF changes by changing the brightness by 10 percent. The first figure shows a shift by +10% for each color and the second figure -10%.

Similar to the brightness gradients but the following saturation gradients show a change of the Hex color E6CACF by changing the saturation by 10% instead.

 E6CACF

FFFFFF

 E6CACF

 CAAFB3

 AE9499

 947A7F

 7A6166

 61494E

 493337

 321D22

 1E050B

 000000

 E6CACF

 E6CACF

 E6B3BC

 E6E1E2

 E69CA9

 E6F8F5

 E68596

 E6FFFF

 E66E83

 E65771

 E6405E

 E6294B

 E61238

 E60029

Harmonies

Analogous

The Analogous color harmony consists of three colors that are next to each other on the color wheel.



E0CBD9



E6CACF



E6CBC5

Triad

The Triadic color harmony groups three colors that are evenly spaced from another and form a triangle on the color wheel.



E6CACF



CCD4C0



BED4E3

Complementary

The Complementary color scheme is a pair of colors which are on the opposite of each other on the color wheel.



E6CACF



CAE6E1

Split Complementary

Split-complementary colors differ from the complementary color scheme. The scheme consists of three colors, the original color and two neighbors of the complement color.



B8D6DC



E6CACF



C1D6C8

Square

The Square scheme is like the rectangle color scheme, but the four colors are evenly spaced on the color wheel.



E6CACF



D7D1BD



B9D7D2



C9D1E5

Rectangle

The Rectangle color scheme consists of four colors that form a rectangle on the color wheel.



E6CACF



E3CCC0



B9D7D2



BBD5E1

Sweetspot

The Sweet Spot groups the original color and five complimentary colors.



E6CACF



FFF5F7



E1CAE6



80797A



000000



808080

Same Dimension

The Same Dimension uses a secret algorithm to generate beautiful new colors.



E6CACF



FFD9E0



E6D3CA



736769



B30020



330009

Inverse Universe

The Inverse Universe completely reimagines the original color for something new.



E6CACF



FFD9E0



CADDE6



736769



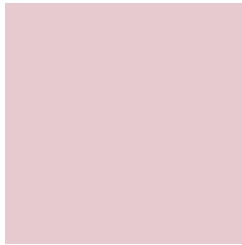
B30020



330009

Previews

White Background



This preview shows how the Hex color E6CACF looks on a white background.

Color Contrast Check

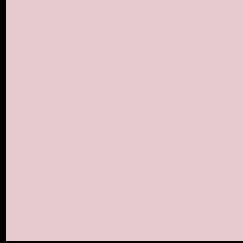
Large Text (above 18pt) WCAG AA × Fail

Any Text WCAG AA × Fail

Large Text (above 18pt) WCAG AAA × Fail

Any Text WCAG AAA × Fail

Black Background



This preview shows how the Hex color E6CACF looks on a black background.

Color Contrast Check

Large Text (above 18pt) WCAG AA ✓ Pass

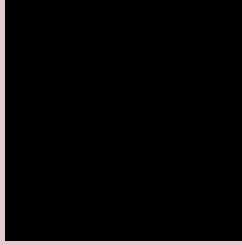
Any Text WCAG AA ✓ Pass

Large Text (above 18pt) WCAG AAA ✓ Pass

Any Text WCAG AAA ✓ Pass

If you want to check with other color combinations, try the [Color Contrast Checker](#).

Hex E6CACF Background



This preview shows how black text looks on a background with the Hex color E6CACF.

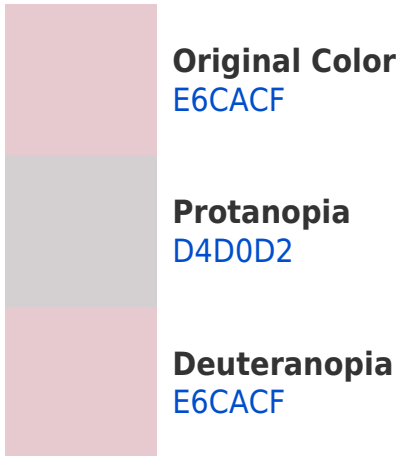


This preview shows how white text looks on a background with the Hex color E6CACF.

Color Blindness Simulation

Color vision deficiency is a very complex topic, and I could not describe the different causes any better than Wikipedia does, so if you want to learn more, you should check out their [article about color blindness](#).

Dichromacy





Tritanopia
E7C9D8

Trichromacy



Original Color
E6CACF

Protanomaly
DBCED1

Deuteranomaly
E6CACF

Tritanomaly
E7C9D5

Monochromacy



Original Color
E6CACF

Achromatopsia
D3D3D3

Achromatomaly
DAD0D2

CSS Examples

Text

The CSS property to change the color of the text to Hex E6CACF is called "color". The color property can be set on classes, ids or directly on the HTML element.

This example shows how text in the color #E6CACF looks like.

```
.text, #text, p{  
    color:#E6CACF  
}
```

If you want to add a text shadow in that color use the text-shadow property, you can generate a text shadow directly with our [CSS Text Shadow Generator](#).

Here you see how black text with a 4 pixel #E6CACF colored shadow looks like.

```
.shadow{ text-shadow: 4px 4px 2px #E6CACF
}
```

Border

The CSS property to change the border of an element to Hex E6CACF is called "border". The border property can be set on classes, ids or directly on the HTML element.

This example shows the color as border, it can be applied via the CSS property "border" or "border-color".

```
.border, #border, table{ border:4px solid
#E6CACF }
```

If only the border color should be changed use the property `border-color`.

```
.border{ border-color:#E6CACF }
```

If you want to add a box shadow in that color use:

Here you see how a box with a 4 pixel #E6CACF colored shadow looks like.

```
.boxshadow{ -moz-box-shadow:4px 4px 4px  
4px #E6CACF; -webkit-box-shadow:4px 4px  
4px 4px #E6CACF; box-shadow:4px 4px 4px  
4px #E6CACF }
```

Background

The CSS property to change the background color of an element to Hex E6CACF is called "background". The background property can be set on classes, ids or directly on the HTML element.

```
.background, #background, body{  
background:#E6CACF }
```

If only the background color should be changed can be used:

```
.background{ background-color:#E6CACF }
```

This example shows the color as background, it is applied via the CSS property "background".

To optimize and compress your CSS code, you can use our [online CSS compressor and optimizer](#) based on csstidy. If you want to create a linear or radial gradient as background or border, check our [CSS Gradient Generator](#).

Hey! You found this booklet interesting? Support Converting Colors with the new Membership Option!

The pro membership hides all ads, plus gives you double the colors in the color bucket, and more awesome pro features!

[Learn more, Memberships starting at \\$2.50/m!](#)

**Follow me
on Twitter!**

@ConvertingColor