

Converting Colors

Hex(E6CBD4)

Have a look what the booklet for
Hex(E6CBD4) contains.

Hex(E6CBD4)	3
<i>Conversions</i>	4
<i>Details</i>	6
<i>Harmonies</i>	11
<i>Previews</i>	23
<i>Color Blindness Simulation</i>	26
<i>CSS Examples</i>	29

Color

Hex(E6CBD4)

Conversions

Conversions Part 1

Format	Color
Hex	E6CBD4
RGB	230, 203, 212
RGB Percent	90%, 80%, 83%
CMY	0.0980, 0.2039, 0.1686
CMYK	0.00, 0.12, 0.08, 0.10
HSL	340°, 35%, 85%
HSV	340°, 12%, 90%
XYZ	65.8727, 64.2883, 71.2244
YIQ	212.0990, 13.2030, 8.5230

Conversions

Conversions Part 2

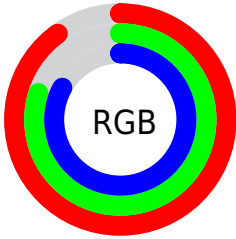
Format	Color
R _Y B	230, 203, 212
Decimal	15125460
CIE Lab	84.12, 10.95, -1.00
CIE LCh	84, 10.991, 354.773
Yxy	64.2883, 0.3271, 0.3192
Android (android.graphics.Color)	4293315540 (0xFFE6CBD4)
YUV	212.0990, -0.0488, 15.6992
Hunter-Lab	80.1800, 6.3335, 3.4583

Details

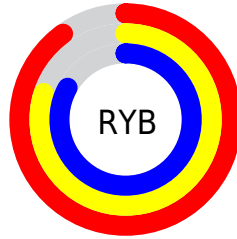
The Hex color **E6CBD4** is a light color, and the websafe version is hex **FFCCCC**. A complement of this color would be **CBE6DD**, and the grayscale version is **D4D4D4**.

A 20% lighter version of the original color is **FFFFFF**, and **AE959D** is the 20% darker color. If you saturate the color by 10%, you get **E6B4C5**, and if you desaturate by 10%, it is **E6E2E3**.

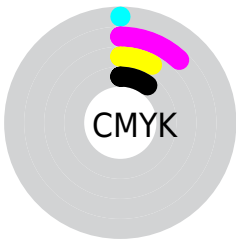
Distribution



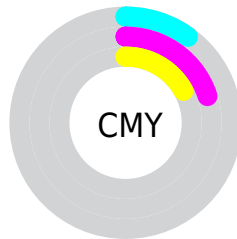
- Red (90%)
- Green (80%)
- Blue (83%)



- Red (90%)
- Yellow (80%)
- Blue (83%)



- Cyan (0%)
- Magenta (12%)
- Yellow (8%)
- Black (10%)



- Cyan (10%)
- Magenta (20%)
- Yellow (17%)

Brightness & Saturation Gradients

These gradients show how the Hex color E6CBD4 changes by changing the brightness by 10 percent. The first figure shows a shift by +10% for each color and the second figure -10%.

Similar to the brightness gradients but the following saturation gradients show a change of the Hex color E6CBD4 by changing the saturation by 10% instead.

 E6CBD4

FFFFFF

 E6CBD4

 CAB0B8

 AE959D

 947B83

 7A626A

 614A52

 49343B

 321E25

 1E0711

 000000

 E6CBD4

 E6CBD4

 E6B4C5

 E6E2E3

 E69DB5

 E6F9F3

 E686A6

 E6FFFF

 E66F97

 E65887

 E64178

 E62A69

 E61359

 E6004D

Harmonies

Analogous

The Analogous color harmony consists of three colors that are next to each other on the color wheel.



DECDDDE



E6CBD4



E8BCBA

Triad

The Triadic color harmony groups three colors that are evenly spaced from another and form a triangle on the color wheel.



E6CBD4



D1D4BF



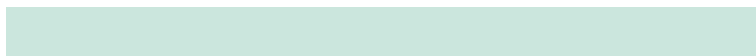
BBD6E2

Complementary

The Complementary color scheme is a pair of colors which are on the opposite of each other on the color wheel.



E6CBD4



CBE6DD

Split Complementary

Split-complementary colors differ from the complementary color scheme. The scheme consists of three colors, the original color and two neighbors of the complement color.



B8D8DA



E6CBD4



C5D7C6

Square

The Square scheme is like the rectangle color scheme, but the four colors are evenly spaced on the color wheel.



E6CBD4



DCD0BD



BCD8D0



C5D3E6

Rectangle

The Rectangle color scheme consists of four colors that form a rectangle on the color wheel.



E6CBD4



E7CCC4



BCD8D0



BAD7E0

Sweetspot

The Sweet Spot groups the original color and five complimentary colors.



E6CBD4



FFF5F8



DDCBE6



80797B



000000



808080

Same Dimension

The Same Dimension uses a secret algorithm to generate beautiful new colors.



E6CBD4



FFDBE7



E6CFCB



73676B



B3003C



330011

Inverse Universe

The Inverse Universe completely reimagines the original color for something new.



E6CBD4



FFDBE7



CBE2E6



73676B



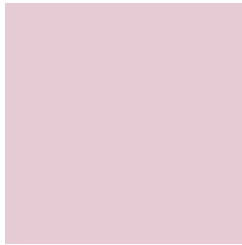
B3003C



330011

Previews

White Background



This preview shows how the Hex color E6CBD4 looks on a white background.

Color Contrast Check

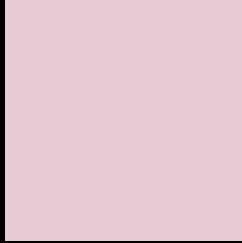
Large Text (above 18pt) WCAG AA × Fail

Any Text WCAG AA × Fail

Large Text (above 18pt) WCAG AAA × Fail

Any Text WCAG AAA × Fail

Black Background



This preview shows how the Hex color E6CBD4 looks on a black background.

Color Contrast Check

Large Text (above 18pt) WCAG AA ✓ Pass

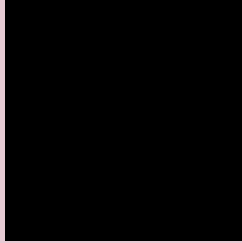
Any Text WCAG AA ✓ Pass

Large Text (above 18pt) WCAG AAA ✓ Pass

Any Text WCAG AAA ✓ Pass

If you want to check with other color combinations, try the [Color Contrast Checker](#).

Hex E6CBD4 Background



This preview shows how black text looks on a background with the Hex color E6CBD4.

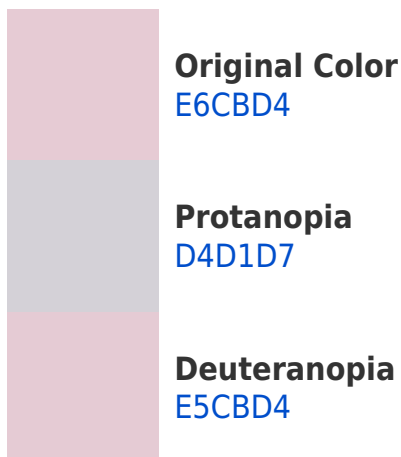


This preview shows how white text looks on a background with the Hex color E6CBD4.

Color Blindness Simulation

Color vision deficiency is a very complex topic, and I could not describe the different causes any better than Wikipedia does, so if you want to learn more, you should check out their [article about color blindness](#).

Dichromacy



Trichromacy



Original Color
E6CBD4

Protanomaly
DBCFD6

Deuteranomaly
E5CBD4

Tritanomaly
E7CAD8

Monochromacy



Original Color
E6CBD4

Achromatopsia
D4D4D4

Achromatomaly
DBD1D4

CSS Examples

Text

The CSS property to change the color of the text to Hex E6CBD4 is called "color". The color property can be set on classes, ids or directly on the HTML element.

This example shows how text in the color #E6CBD4 looks like.

```
.text, #text, p{  
    color:#E6CBD4  
}
```

If you want to add a text shadow in that color use the text-shadow property, you can generate a text shadow directly with our [CSS Text Shadow Generator](#).

Here you see how black text with a 4 pixel #E6CBD4 colored shadow looks like.

```
.shadow{ text-shadow: 4px 4px 2px #E6CBD4
}
```

Border

The CSS property to change the border of an element to Hex E6CBD4 is called "border". The border property can be set on classes, ids or directly on the HTML element.

This example shows the color as border, it can be applied via the CSS property "border" or "border-color".

```
.border, #border, table{ border:4px solid
#E6CBD4 }
```

If only the border color should be changed use the property `border-color`.

```
.border{ border-color:#E6CBD4 }
```

If you want to add a box shadow in that color use:

Here you see how a box with a 4 pixel #E6CBD4 colored shadow looks like.

```
.boxshadow{ -moz-box-shadow:4px 4px 4px  
4px #E6CBD4; -webkit-box-shadow:4px 4px  
4px 4px #E6CBD4; box-shadow:4px 4px 4px  
4px #E6CBD4 }
```

Background

The CSS property to change the background color of an element to Hex E6CBD4 is called "background". The background property can be set on classes, ids or directly on the HTML element.

```
.background, #background, body{  
background:#E6CBD4 }
```

If only the background color should be changed can be used:

```
.background{ background-color:#E6CBD4 }
```

This example shows the color as background, it is applied via the CSS property "background".

To optimize and compress your CSS code, you can use our [online CSS compressor and optimizer](#) based on csstidy. If you want to create a linear or radial gradient as background or border, check our [CSS Gradient Generator](#).

Hey! You found this booklet interesting? Support Converting Colors with the new Membership Option!

The pro membership hides all ads, plus gives you double the colors in the color bucket, and more awesome pro features!

[Learn more, Memberships starting at \\$2.50/m!](#)

**Follow me
on Twitter!**

@ConvertingColor